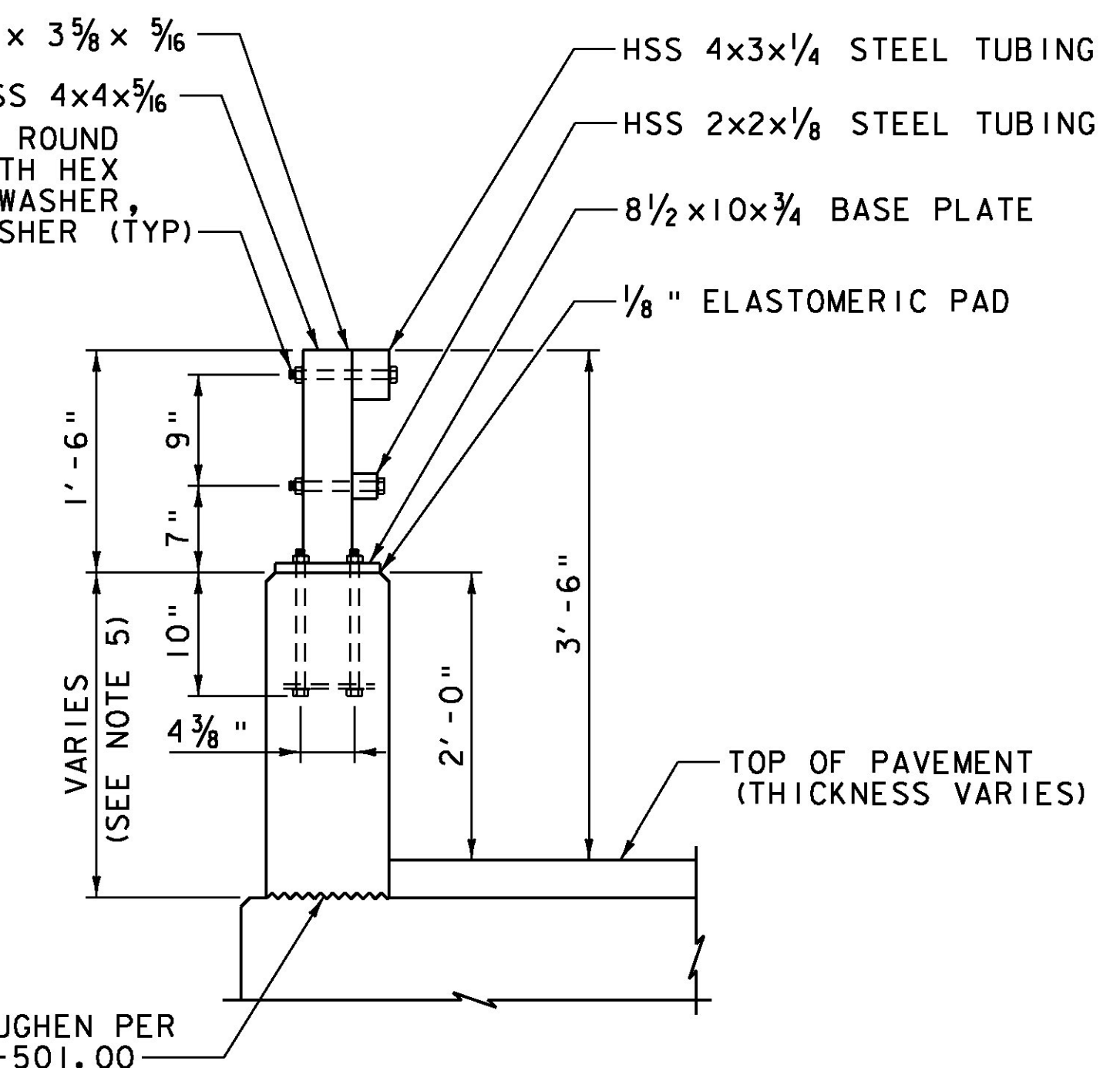
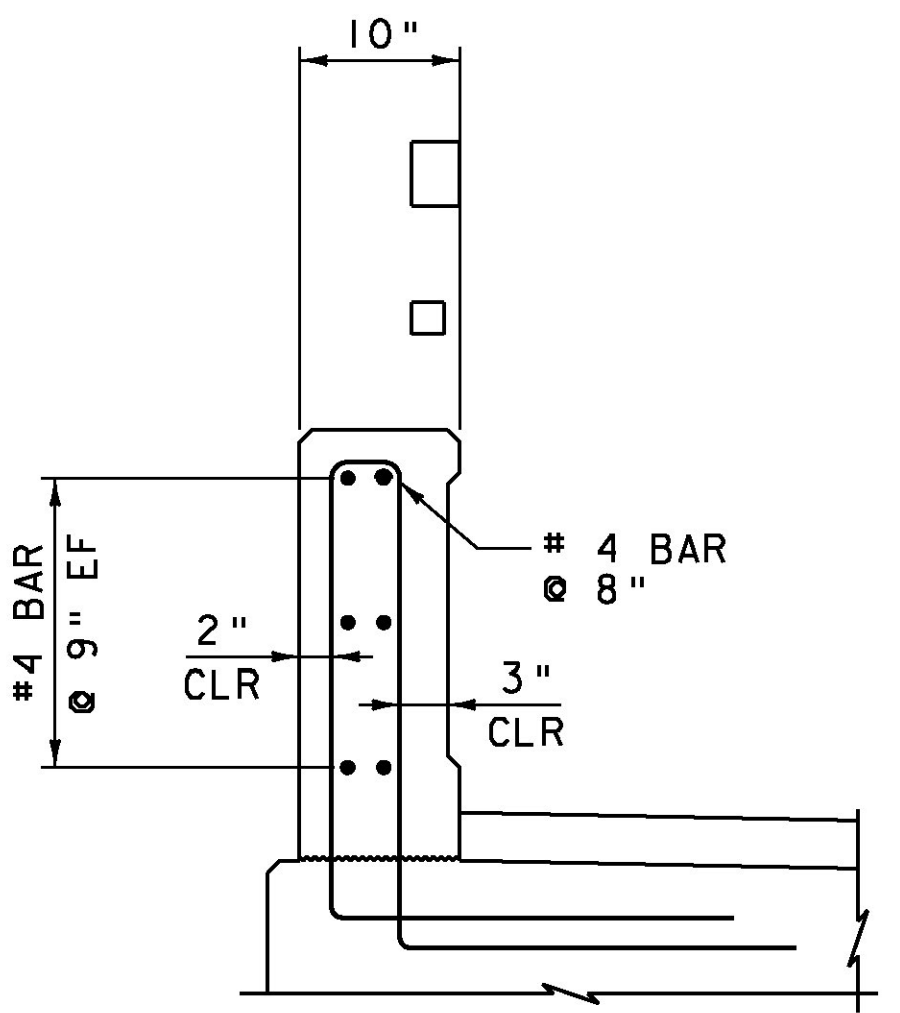


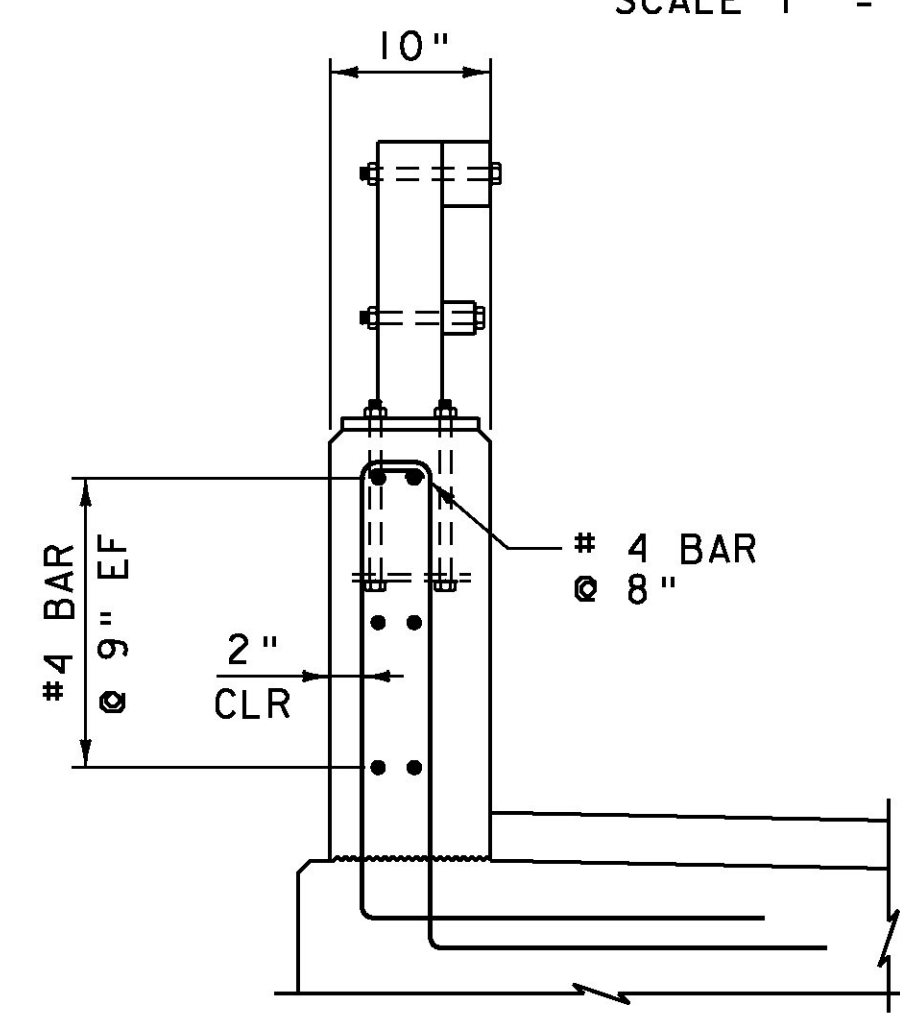
RAILING & END WALL APPROACH  
SCALE 1" = 1'-0"



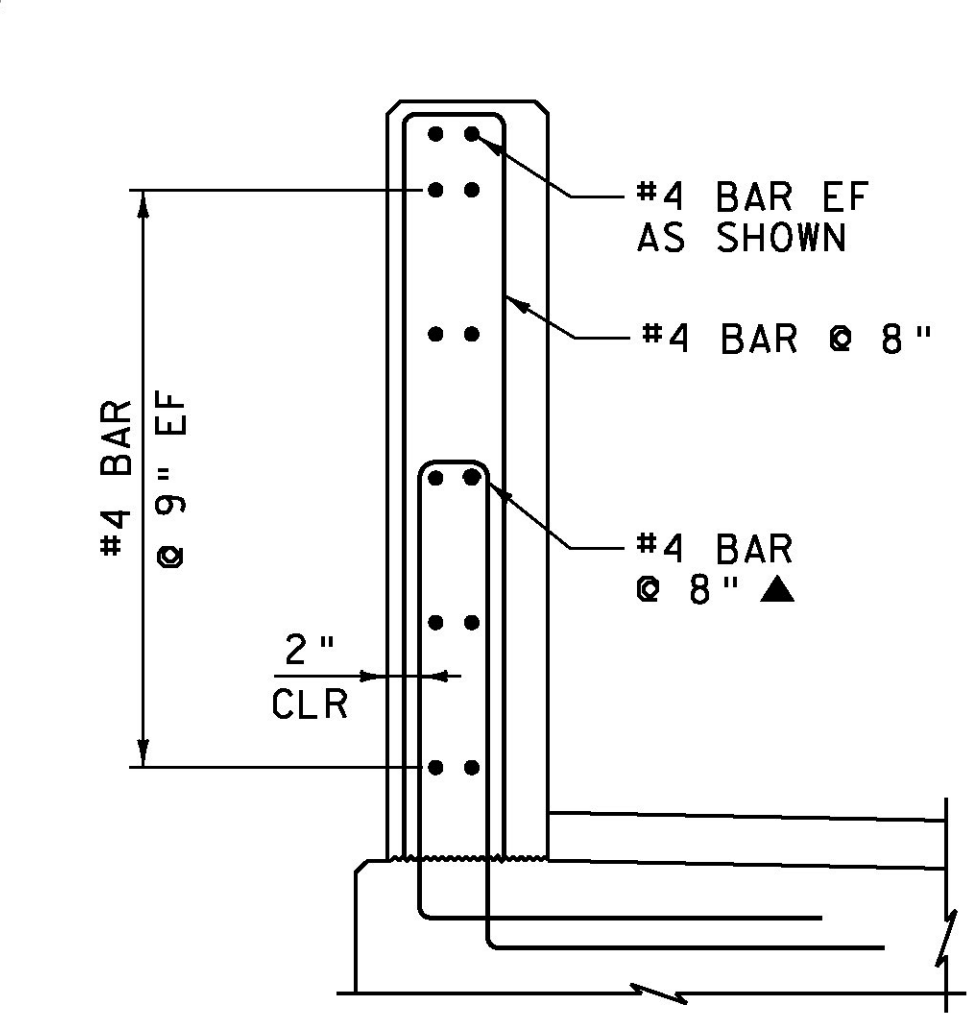
RAIL TYPICAL SECTION  
SCALE 1" = 1'-0"



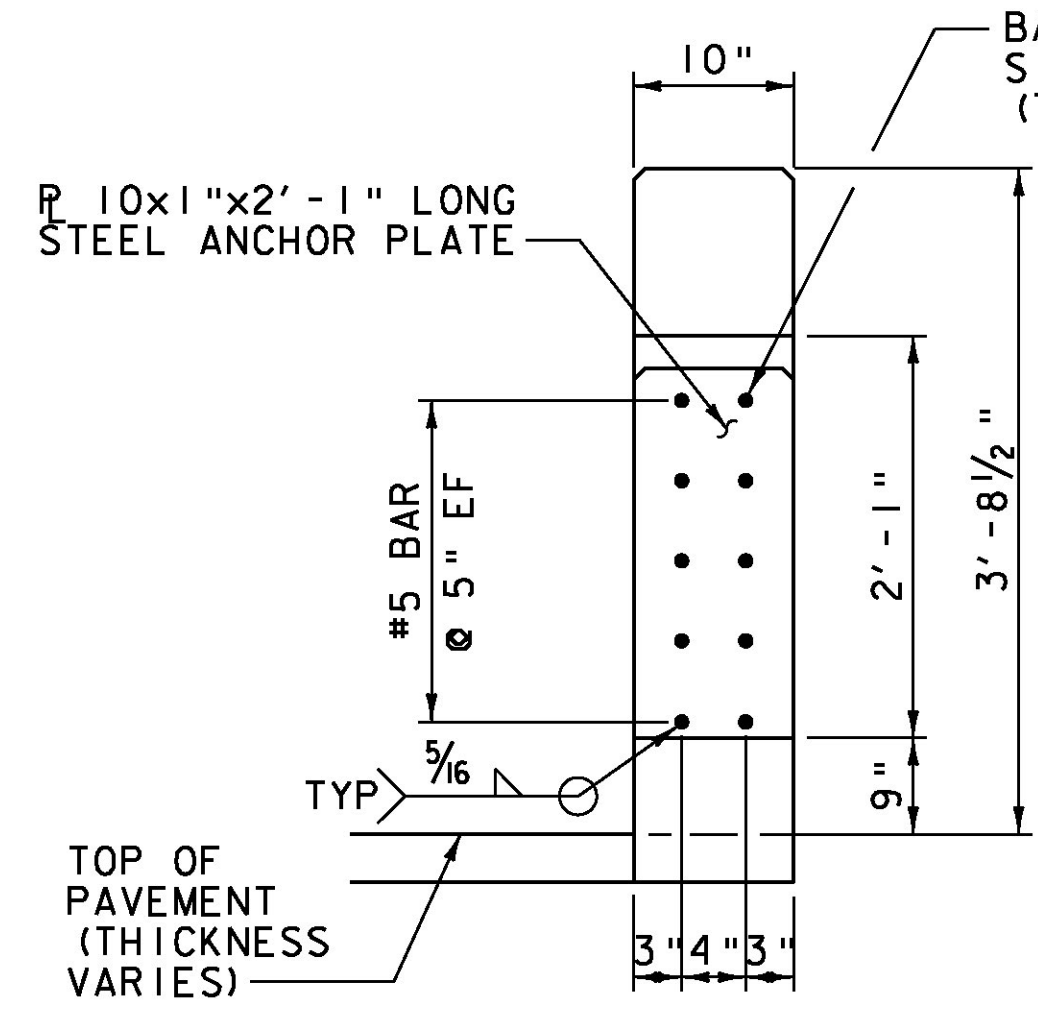
SECTION A-A  
SCALE 1" = 1'-0"



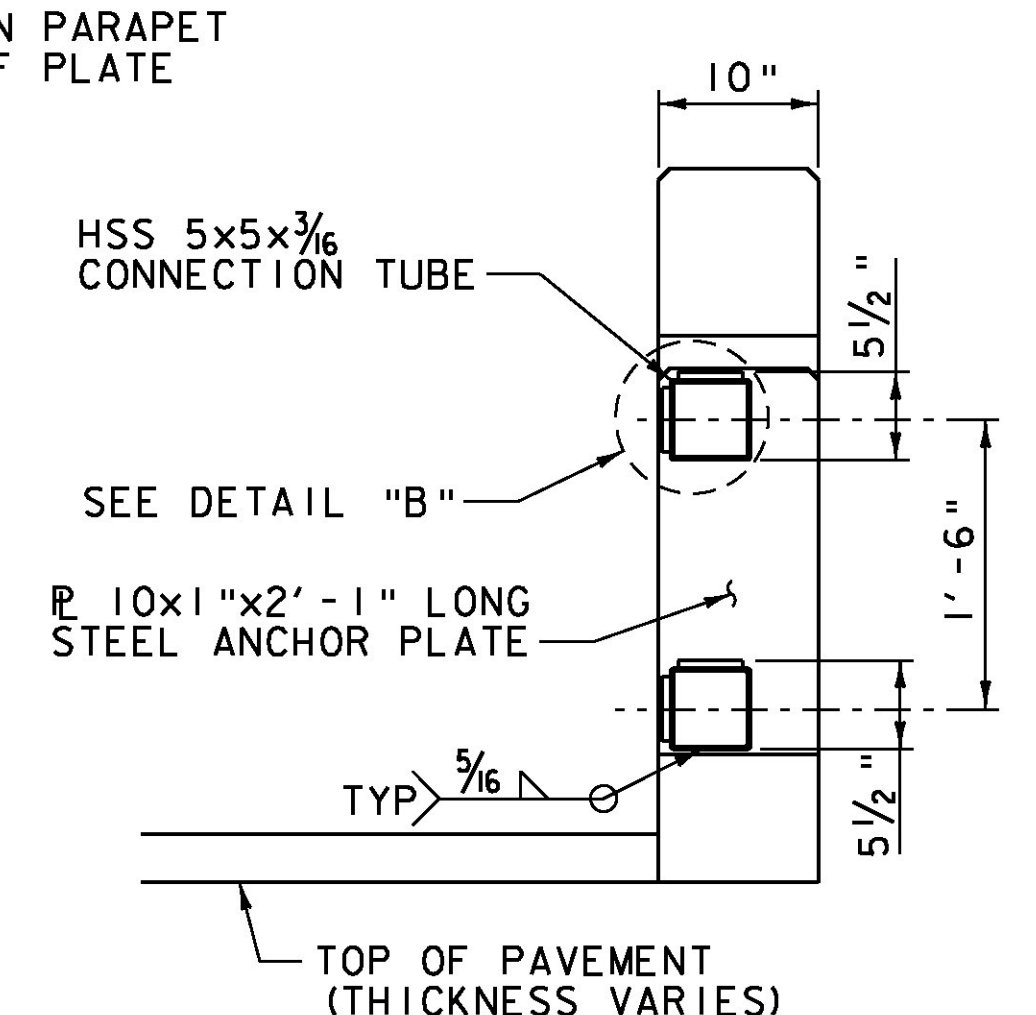
SECTION B-B  
SCALE 1" = 1'-0"



SECTION C-C  
SCALE 1" = 1'-0"



SHOWING EMBEDDED REBAR

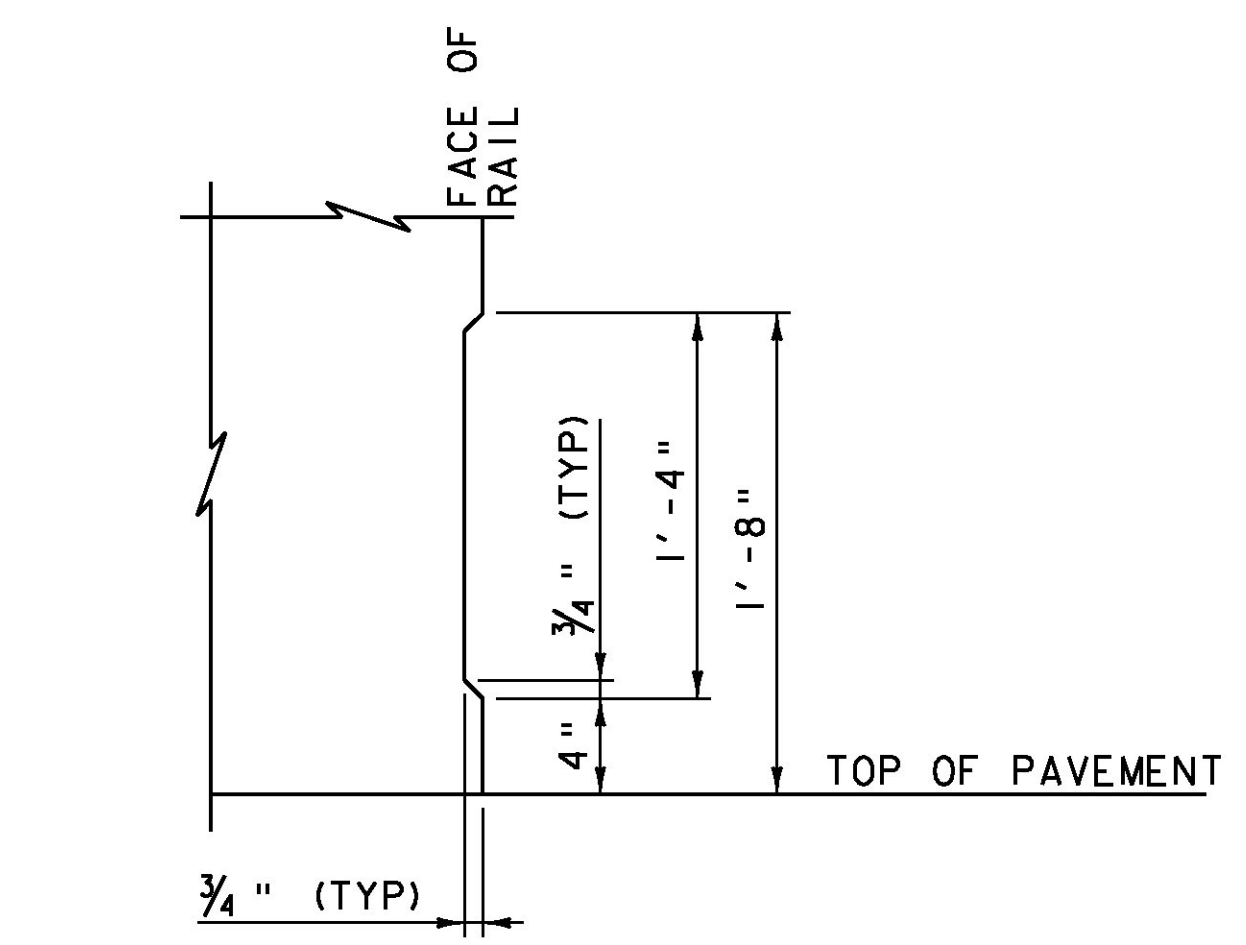


WITH HSS CONNECTOR TUBE

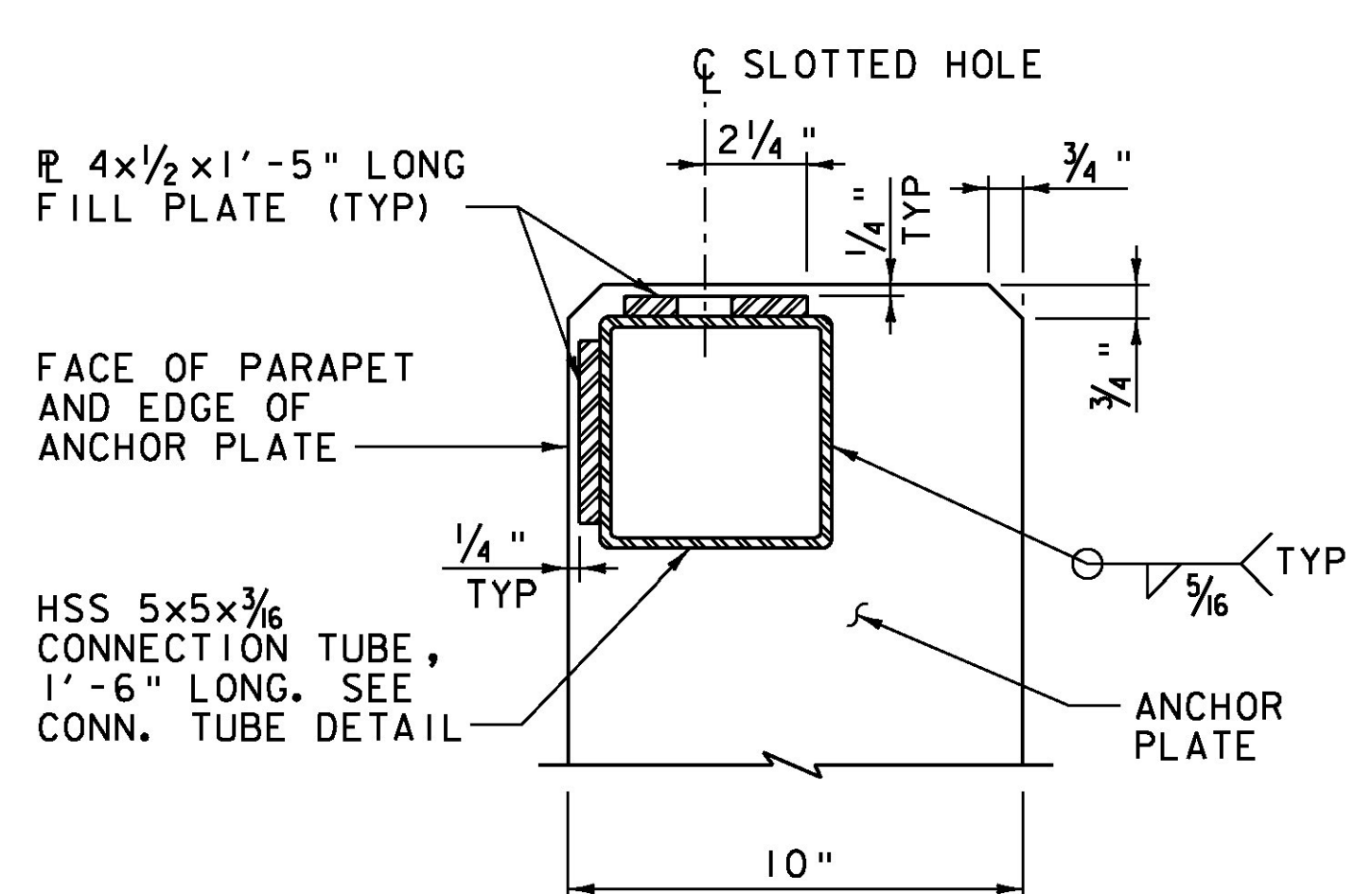
**NOTE:**  
NF = NEAR FACE  
FF = FAR FACE  
EF = EACH FACE  
▲ = CUT TO FIT IN FIELD  
3" CLEAR, UNLESS OTHERWISE SPECIFIED ON THE PLANS.  
2'-2" BAR LAP UNLESS OTHERWISE SPECIFIED ON THE PLANS.

- NOTES:**
1. PARAPET SHALL HAVE A RUBBED FINISH IN ACCORDANCE WITH SECTION 501.
  2. HOLES AND RECESSES ARE TO BE FORMED OR CORED, PERCUSSION DRILLING IS NOT ALLOWED.
  3. ALL STEEL COMPONENTS SHALL BE COLOR GALVANIZED POWDER COATED BLACK AFTER GALVANIZING IN ACCORDANCE WITH THE SPECIAL PROVISION.
  4. SEE BR 15 PROJECT NOTES SHEET FOR BRIDGE RAILING NOTES.
  5. SEE BR 15 NEXT BEAM DETAILS (2 OF 4) FOR DIMENSIONS OF PARAPET HEIGHT ALONG THE SPAN.
  6. SEE STANDARDS S-352B & S-352C FOR STEEL TUBING SPLICE DETAILS AND RAIL POST BASE PLATE DETAILS.

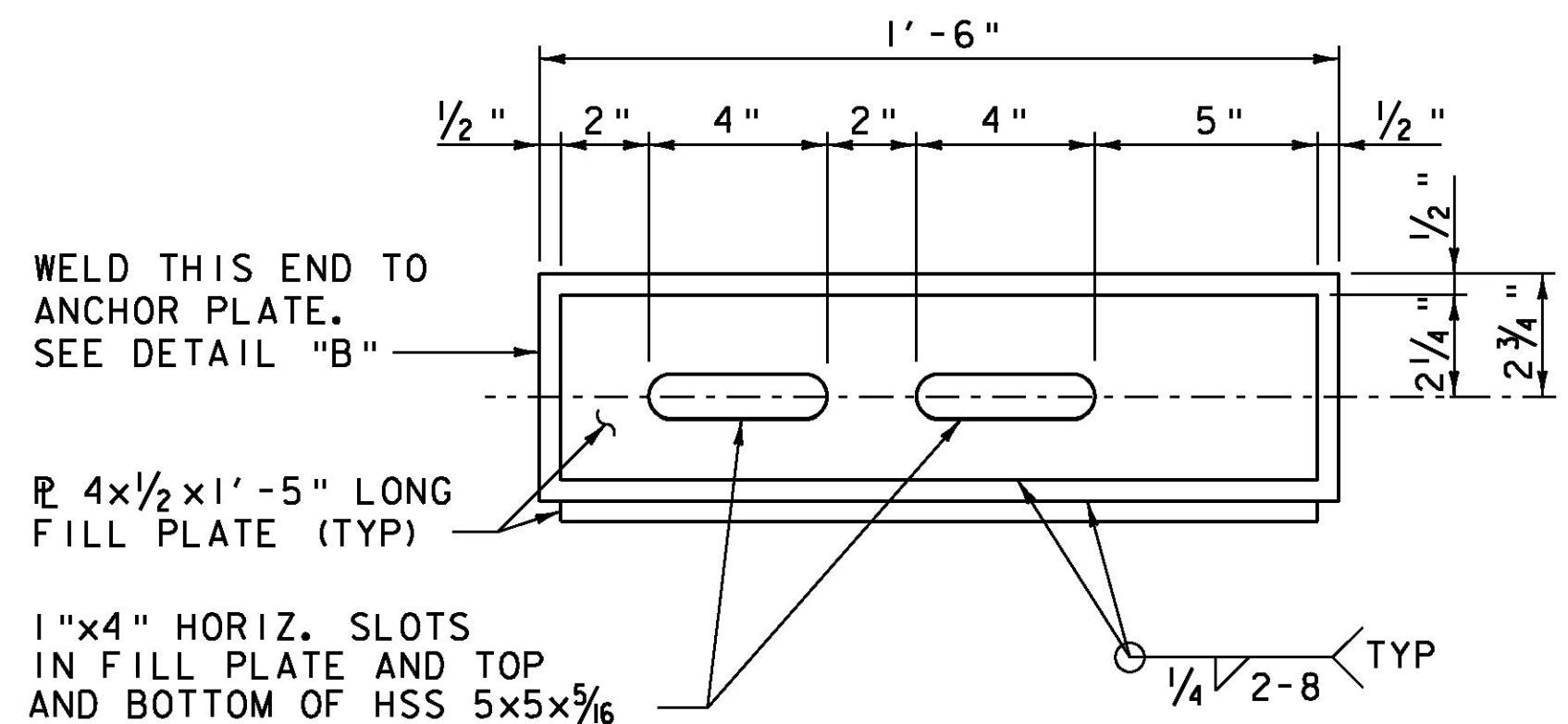
PROJECT NAME:	ROCHESTER
PROJECT NUMBER:	BRF 0162(16)
FILE NAME:	z10c418brall.dgn
PROJECT LEADER:	G.S. GOODRICH
DESIGNED BY:	G.S. GOODRICH
BR 15 BRIDGE RAIL DETAILS (1 OF 2)	
PLOT DATE:	8/19/2013
DRAWN BY:	J.L. LEMIEUX
CHECKED BY:	S.E. BURBANK
	SHEET 101 OF 238



ASTHETIC TREATMENT DETAIL  
SCALE 1 1/2" = 1'-0"



DETAIL B  
SCALE 3" = 1'-0"



CONNECTION TUBE DETAIL  
SCALE 3" = 1'-0"