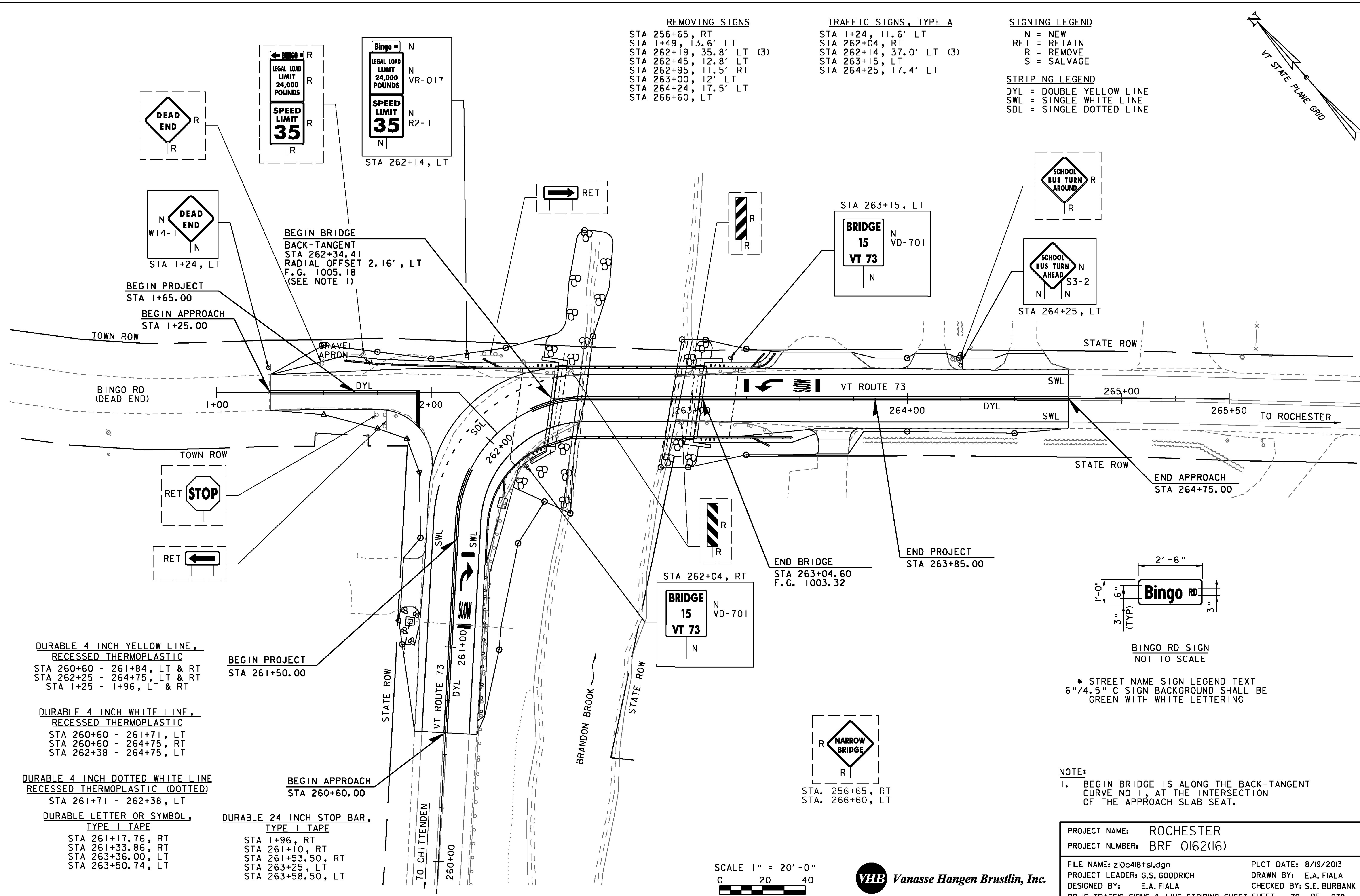


REMOVING SIGNS
 STA 256+65, RT
 STA 1+49, 13.6' LT
 STA 262+19, 35.8' LT (3)
 STA 262+45, 12.8' LT
 STA 262+95, 11.5' RT
 STA 263+00, 12' LT
 STA 264+24, 17.5' LT
 STA 266+60, LT

TRAFFIC SIGNS, TYPE A
 STA 1+24, 11.6' LT
 STA 262+04, RT
 STA 262+14, 37.0' LT (3)
 STA 263+15, LT
 STA 264+25, 17.4' LT

SIGNING LEGEND
 N = NEW
 RET = RETAIN
 R = REMOVE
 S = SALVAGE

STRIPING LEGEND
 DYL = DOUBLE YELLOW LINE
 SWL = SINGLE WHITE LINE
 SDL = SINGLE DOTTED LINE



DURABLE 4 INCH YELLOW LINE, RECESSED THERMOPLASTIC
 STA 260+60 - 261+84, LT & RT
 STA 262+25 - 264+75, LT & RT
 STA 1+25 - 1+96, LT & RT

DURABLE 4 INCH WHITE LINE, RECESSED THERMOPLASTIC
 STA 260+60 - 261+71, LT
 STA 260+60 - 264+75, RT
 STA 262+38 - 264+75, LT

DURABLE 4 INCH DOTTED WHITE LINE, RECESSED THERMOPLASTIC (DOTTED)
 STA 261+71 - 262+38, LT

DURABLE LETTER OR SYMBOL, TYPE I TAPE
 STA 261+17.76, RT
 STA 261+33.86, RT
 STA 263+36.00, LT
 STA 263+50.74, LT

BEGIN PROJECT
 STA 261+50.00

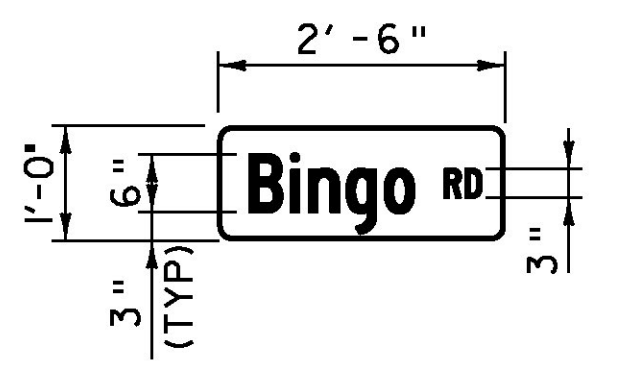
DURABLE 24 INCH STOP BAR, TYPE I TAPE
 STA 1+96, RT
 STA 261+10, RT
 STA 261+53.50, RT
 STA 263+25, LT
 STA 263+58.50, LT

BEGIN BRIDGE
 BACK-TANGENT
 STA 262+34.41
 RADIAL OFFSET 2.16', LT
 F.G. 1005.18
 (SEE NOTE 1)

END BRIDGE
 STA 263+04.60
 F.G. 1003.32

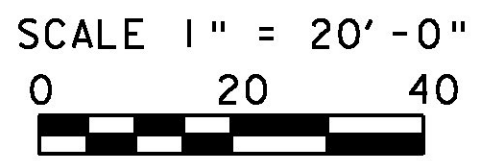
END PROJECT
 STA 263+85.00

END APPROACH
 STA 264+75.00



* STREET NAME SIGN LEGEND TEXT
 6" x 4.5" C SIGN BACKGROUND SHALL BE GREEN WITH WHITE LETTERING

NOTE:
 1. BEGIN BRIDGE IS ALONG THE BACK-TANGENT CURVE NO 1, AT THE INTERSECTION OF THE APPROACH SLAB SEAT.



| | |
|-------------------------------|---|
| PROJECT NAME: ROCHESTER | PLOT DATE: 8/19/2013 |
| PROJECT NUMBER: BRF 0162(16) | DRAWN BY: E.A. FIALA |
| FILE NAME: z10c418+sl.dgn | CHECKED BY: S.E. BURBANK |
| PROJECT LEADER: G.S. GOODRICH | BR 15 TRAFFIC SIGNS & LINE STRIPING SHEET SHEET 79 OF 238 |