

CONSTRUCT 10.0' PAVED DRIVE  
STA 261+28, LT - 28.0' WIDE

CONSTRUCT 7.5' PAVED DRIVE  
STA 263+58, LT - 41.5' WIDE

CONSTRUCT 5.0' PAVED APRON  
STA 263+66, RT - 21.0' WIDE

CONSTRUCT 7.3' PAVED DRIVE  
STA 264+11, LT - 20.5' WIDE

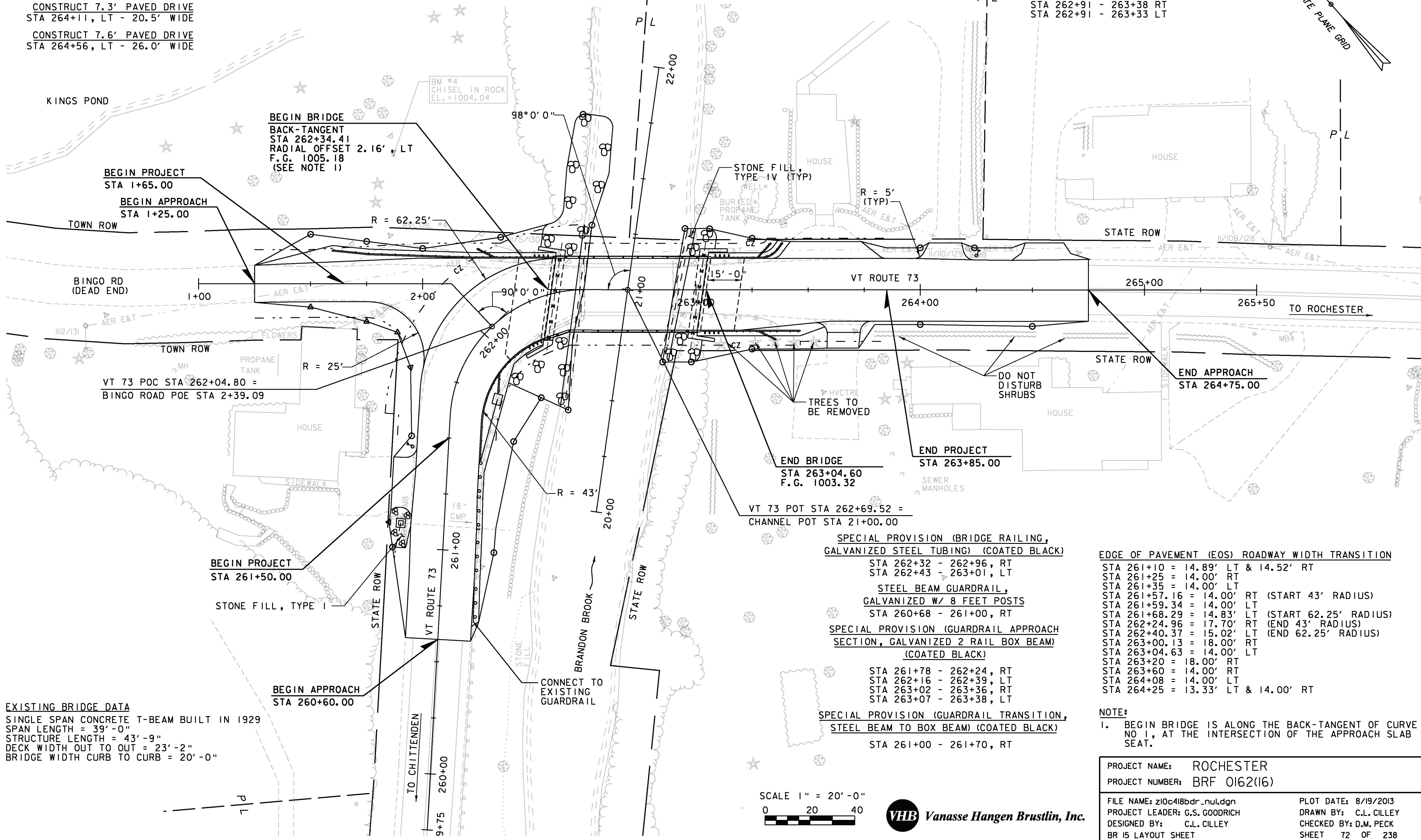
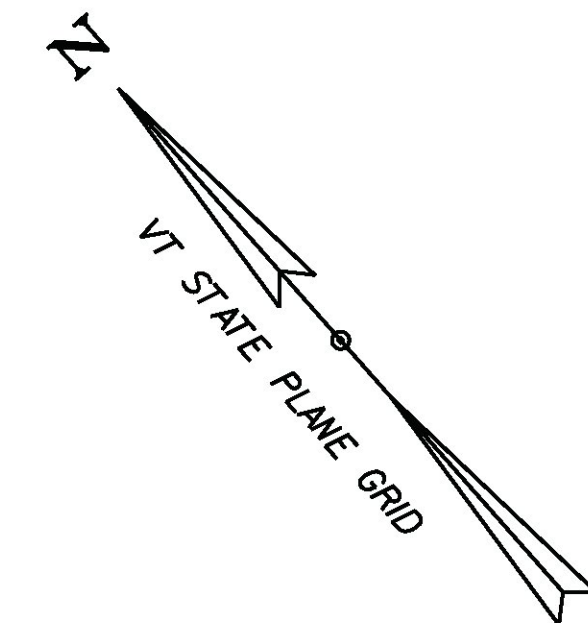
CONSTRUCT 7.6' PAVED DRIVE  
STA 264+56, LT - 26.0' WIDE

RELOCATE MAILBOX, SINGLE SUPPORT  
STA 261+45, LT  
STA 264+50, LT

BOX BEAM GUARDRAIL (COATED BLACK)  
STA 261+70 - 261+78, RT  
STA 261+60 - 262+16, LT  
STA 263+36 - 263+46, RT

LIMITS OF COLD PLANING  
STA 260+60 - 261+10, LT & RT  
STA 264+25 - 264+75, LT & RT  
STA 264+40 - 264+75, DRIVE LT

REMOVAL AND DISPOSAL OF GUARDRAIL  
STA 260+65 - 262+49 RT  
STA 262+18 - 262+49 LT  
STA 262+91 - 263+38 RT  
STA 262+91 - 263+33 LT



**EXISTING BRIDGE DATA**  
SINGLE SPAN CONCRETE T-BEAM BUILT IN 1929  
SPAN LENGTH = 39'-0"  
STRUCTURE LENGTH = 43'-9"  
DECK WIDTH OUT TO OUT = 23'-2"  
BRIDGE WIDTH CURB TO CURB = 20'-0"

SPECIAL PROVISION (BRIDGE RAILING,  
GALVANIZED STEEL TUBING) (COATED BLACK)  
STA 262+32 - 262+96, RT  
STA 262+43 - 263+01, LT

STEEL BEAM GUARDRAIL,  
GALVANIZED W/ 8 FEET POSTS  
STA 260+68 - 261+00, RT

SPECIAL PROVISION (GUARDRAIL APPROACH  
SECTION, GALVANIZED 2 RAIL BOX BEAM)  
(COATED BLACK)  
STA 261+78 - 262+24, RT  
STA 262+16 - 262+39, LT  
STA 263+02 - 263+36, RT  
STA 263+07 - 263+38, LT

SPECIAL PROVISION (GUARDRAIL TRANSITION,  
STEEL BEAM TO BOX BEAM) (COATED BLACK)  
STA 261+00 - 261+70, RT

**EDGE OF PAVEMENT (EOS) ROADWAY WIDTH TRANSITION**  
STA 261+10 = 14.89' LT & 14.52' RT  
STA 261+25 = 14.00' RT  
STA 261+35 = 14.00' LT  
STA 261+57.16 = 14.00' RT (START 43' RADIUS)  
STA 261+59.34 = 14.00' LT  
STA 261+68.29 = 14.83' LT (START 62.25' RADIUS)  
STA 262+24.96 = 17.70' RT (END 43' RADIUS)  
STA 262+40.37 = 15.02' LT (END 62.25' RADIUS)  
STA 263+00.13 = 18.00' RT  
STA 263+04.63 = 14.00' LT  
STA 263+20 = 18.00' RT  
STA 263+60 = 14.00' RT  
STA 264+08 = 14.00' LT  
STA 264+25 = 13.33' LT & 14.00' RT

**NOTE:**  
1. BEGIN BRIDGE IS ALONG THE BACK-TANGENT OF CURVE NO 1, AT THE INTERSECTION OF THE APPROACH SLAB SEAT.

|                    |                    |
|--------------------|--------------------|
| PROJECT NAME:      | ROCHESTER          |
| PROJECT NUMBER:    | BRF 0162(16)       |
| FILE NAME:         | z10c418bdr_nul.dgn |
| DESIGNED BY:       | C.L. CILLEY        |
| BR 15 LAYOUT SHEET |                    |
| PLOT DATE:         | 8/19/2013          |
| DRAWN BY:          | C.L. CILLEY        |
| CHECKED BY:        | D.M. PECK          |
| SHEET              | 72 OF 238          |

