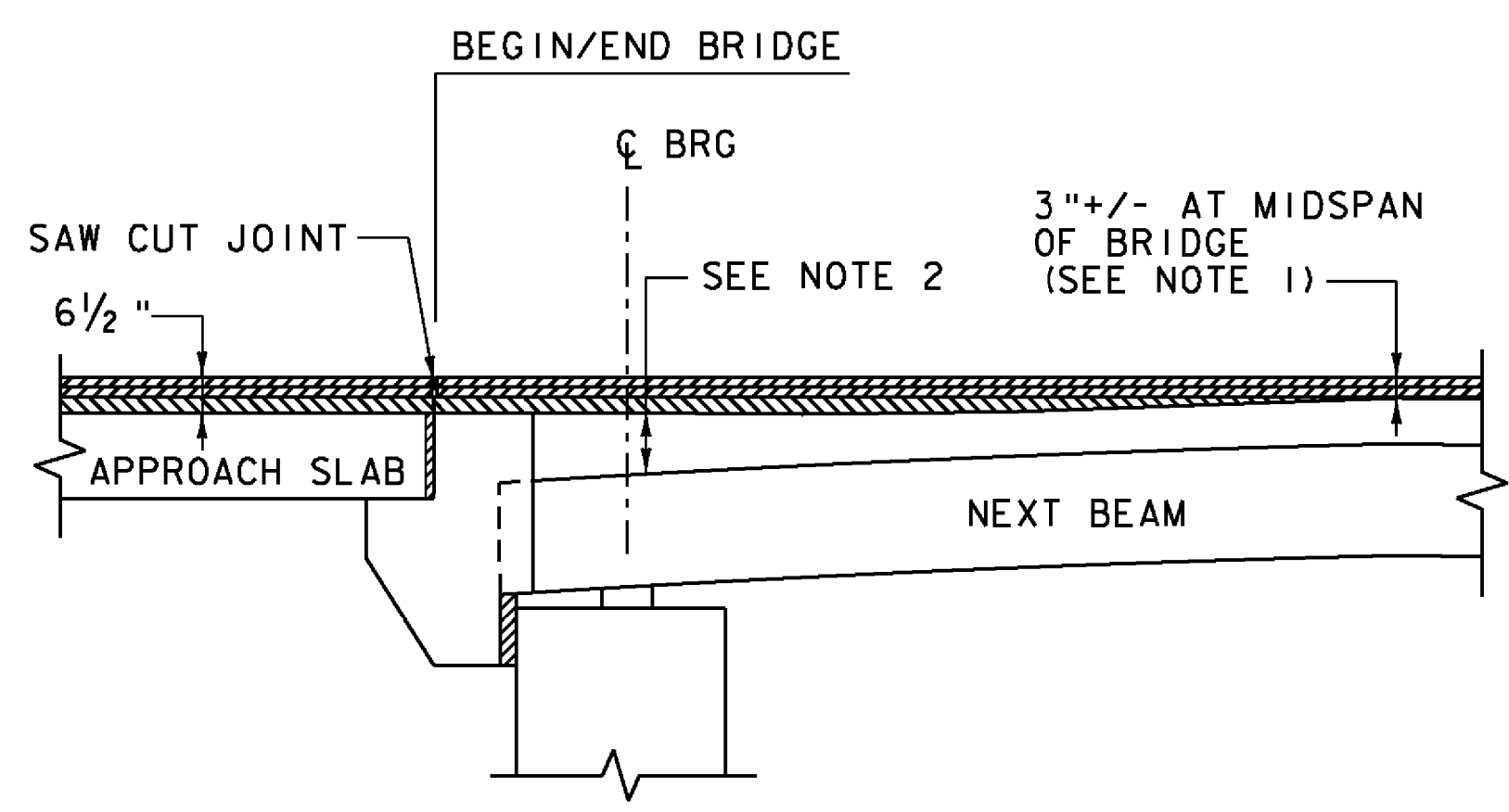


- \* (2) - 1 1/2" LIFTS OF TYPE IVS OVER  
(1) - 3" LIFT OF TYPE IIS
- \*\* (2) - 1 1/2" LIFTS OF TYPE IVS OVER  
(1) - 3 1/2" LIFT OF TYPE IIS
- \*\*\* (2) - 1 1/2" LIFTS OF TYPE IVS  
(1) - VARIABLE LIFT OF TYPE IVS (0" MIN, 3" MAX)

\*\*\*\* BEGIN BRIDGE IS ALONG THE BACKTANGENT OF CURVE NO 1, AT THE INTERSECTION OF THE APPROACH SLAB SEAT.

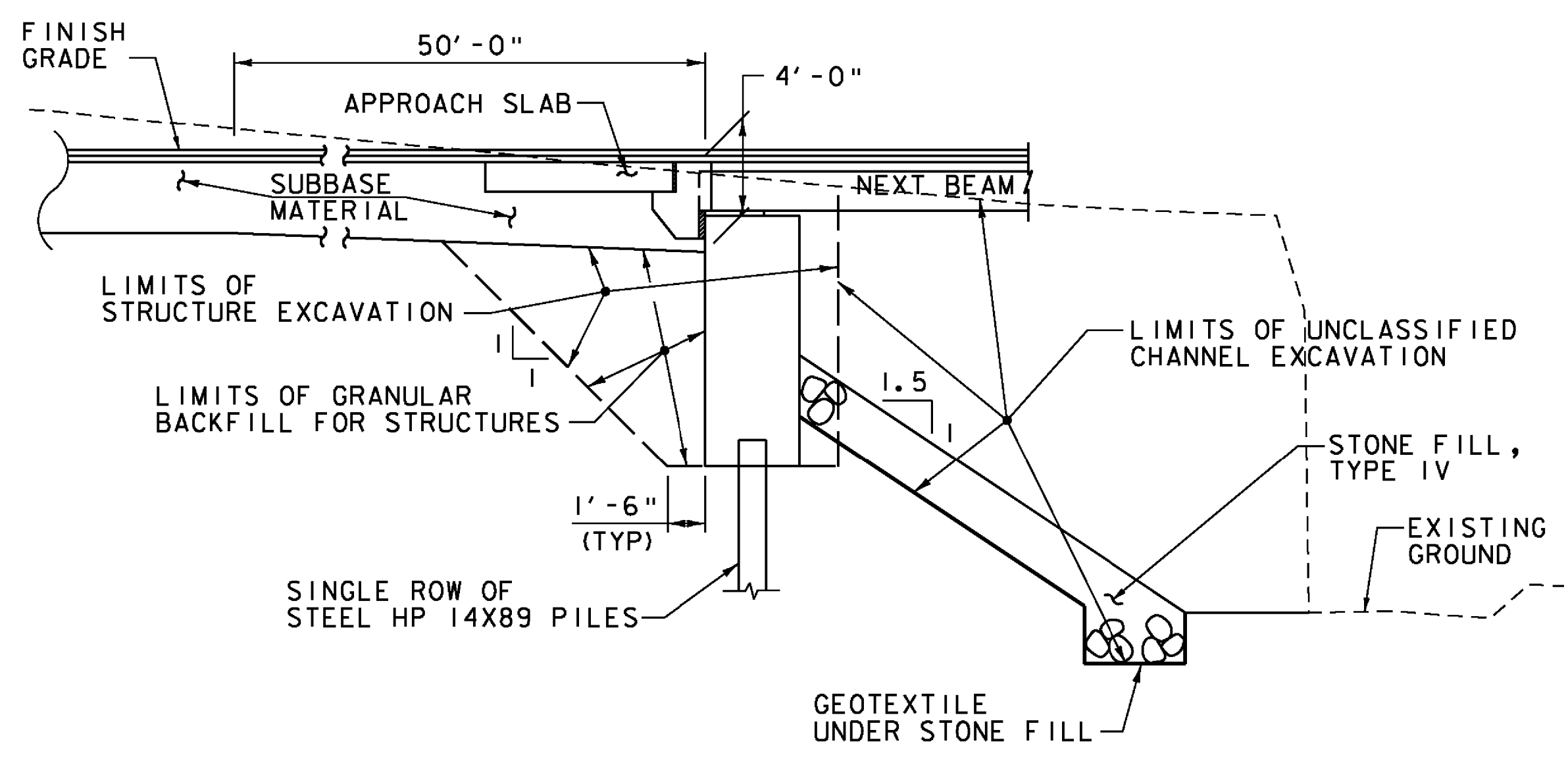
NOTE: EMULSIFIED ASPHALT IS TO BE APPLIED AT A RATE OF 0.040 GAL/SY BETWEEN ALL LIFTS OF BITUMINOUS CONCRETE PAVEMENT AND ON THE EXISTING PAVEMENT AND THE APPROACH SLAB PRIOR TO PLACING THE FIRST LIFT, AS DIRECTED BY THE ENGINEER.

**APPROACH SECTION**  
NOT TO SCALE



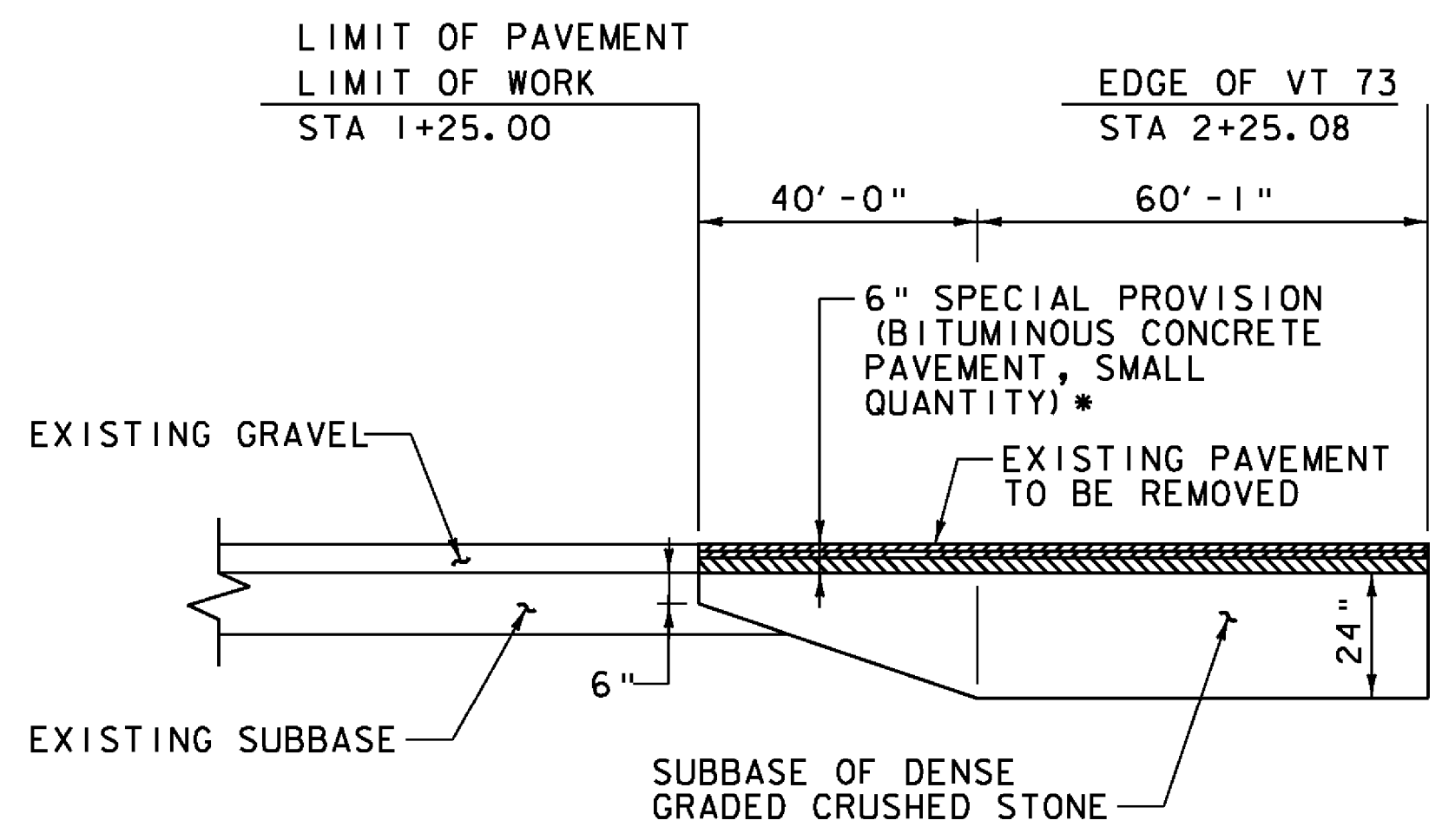
- NOTES:**
- PAVEMENT THICKNESS VARIES ON BRIDGE TO ACCOUNT FOR CAMBER. SEE BR 15 NEXT BEAM DETAILS (2 OF 4) FOR PAVEMENT THICKNESS IN PRECAST CONCRETE PARAPET HEIGHT DETAIL.
  - FLANGE THICKNESS VARIES TO ACCOUNT FOR SAG VERTICAL CURVE ON BRIDGE. SEE BR 15 NEXT BEAM DETAILS (3 OF 4) FOR THICKENED FLANGE AT BEAM ENDS DETAIL.

**PAVEMENT TRANSITION DETAIL**  
NOT TO SCALE



NOTE: ACTUAL STRUCTURE EXCAVATION LIMITS SHALL BE DETERMINED BY THE CONTRACTOR. HOWEVER, ONLY THE EXCAVATION BETWEEN THE LIMITS SHOWN FOR STRUCTURE EXCAVATION WILL BE PAID FOR UNDER ITEM 204.25 "STRUCTURE EXCAVATION". EXCAVATION OUTSIDE OF THESE LIMITS OR OUTSIDE OF THE UNCLASSIFIED CHANNEL EXCAVATION LIMITS WILL BE THE EXPENSE OF THE CONTRACTOR.

**ABUTMENT EARTHWORK SECTION**  
NOT TO SCALE



- \* (2) - 1 1/2" LIFTS OF TYPE IVS OVER  
(1) - 3" LIFT OF TYPE IIS

**BINGO ROAD APPROACH SECTION**  
NOT TO SCALE

PROJECT NAME:	ROCHESTER
PROJECT NUMBER:	BRF 0162(16)
FILE NAME:	z10c418typ.dgn
PROJECT LEADER:	G.S. GOODRICH
DESIGNED BY:	C.L. CILLEY
BR 15 TYPICAL EARTHWORK SECTIONS	
PLOT DATE:	8/19/2013
DRAWN BY:	C.L. CILLEY
CHECKED BY:	D.M. PECK
SHEET	63 OF 238

