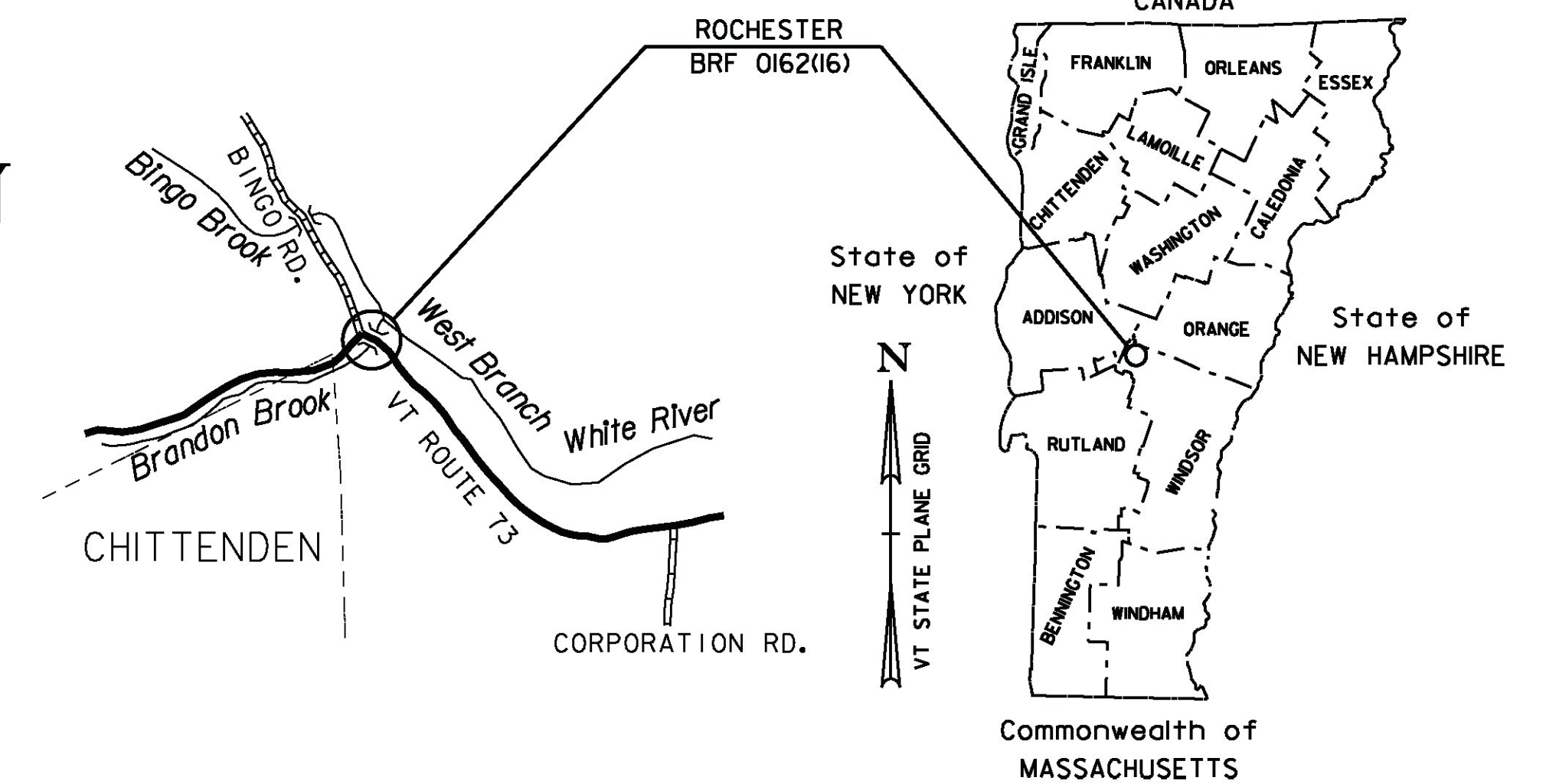


STATE OF VERMONT AGENCY OF TRANSPORTATION



PROPOSED IMPROVEMENT BRIDGE PROJECT

TOWN OF ROCHESTER
COUNTY OF WINDSOR
VT ROUTE 73 (RURAL MAJOR COLLECTOR), BRIDGE NO 15

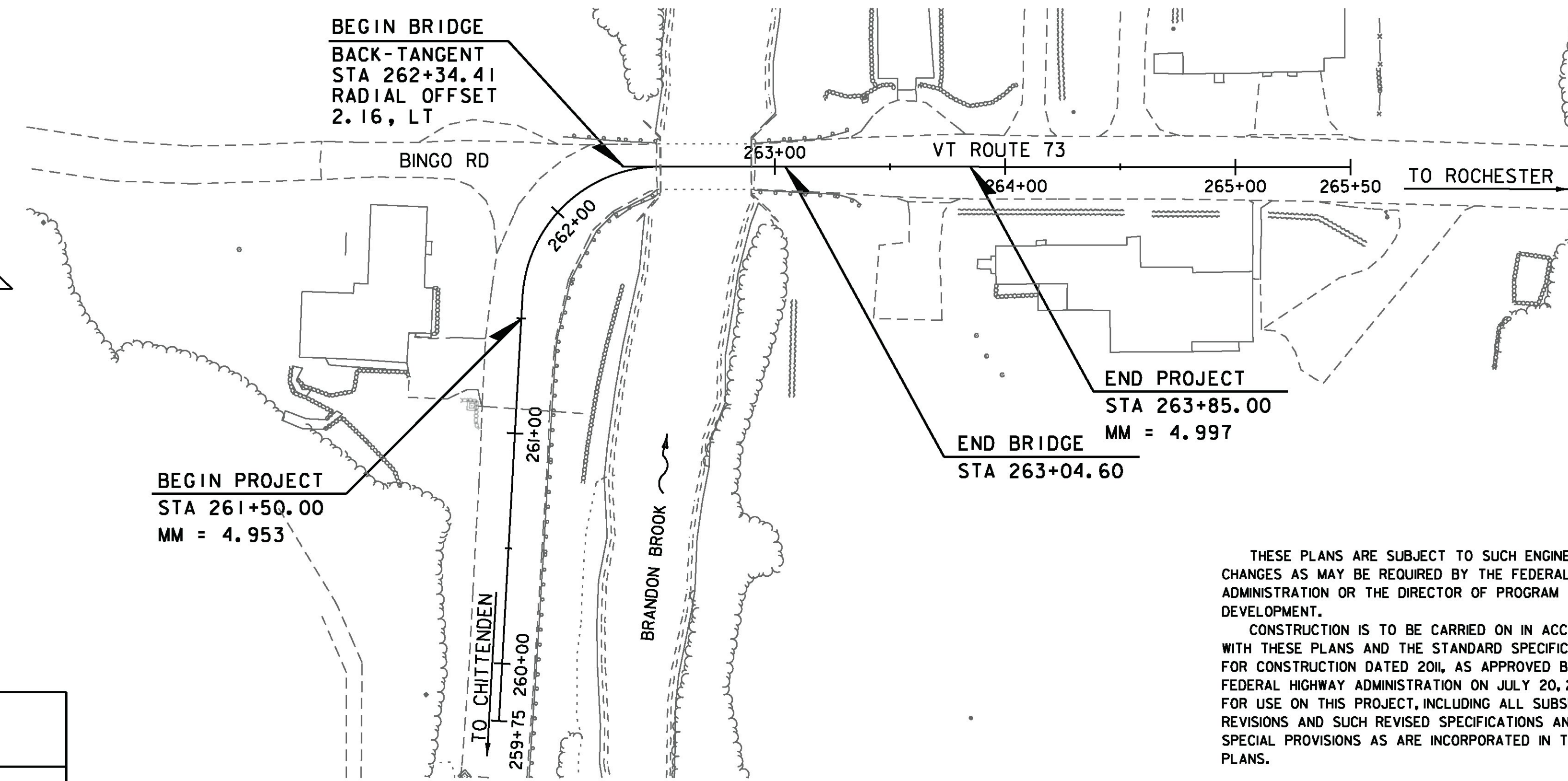
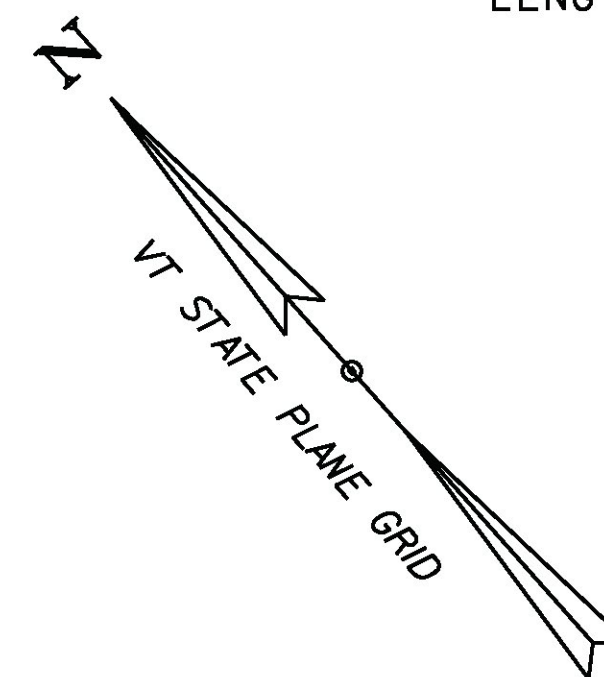


LOCATION MAP
NOT TO SCALE

PROJECT LOCATION: LOCATED IN THE COUNTY OF WINDSOR, TOWN OF ROCHESTER, ON VT 73; BRIDGE NO 15 OVER BRANDON BROOK, APPROXIMATELY 4.00 MILES WEST OF THE INTERSECTION WITH VT ROUTE 73 AND VT ROUTE 100.

PROJECT DESCRIPTION: WORK TO BE PERFORMED UNDER THIS PROJECT INCLUDES THE REMOVAL AND REPLACEMENT OF EXISTING BRIDGE NO 15 ON THE EXISTING ALIGNMENT, WITH ASSOCIATED ROADWAY AND CHANNEL WORK.

LENGTH OF STRUCTURE: 71.12 FT
LENGTH OF ROADWAY: 163.88 FT
LENGTH OF PROJECT: 235.00 FT



QUALITY ASSURANCE PROGRAM: LEVEL 2

CONTRACT PLANS
AUGUST 2013

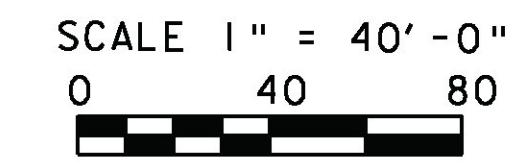
CONVENTIONAL SYMBOLS	
COUNTY LINE	
TOWN LINE	
LIMITS OF ACCESS	
POINT OF ACCESS	
FENCE LINE	
STONE WALL	
TRAVELED WAY	
GUARD RAIL	
RAILROAD	
SURVEY LINE	
CULVERT	
POWER POLE	
TELEPHONE POLE	
TREES	
CONTROL OF ACCESS	
PROPERTY LINE	
R.O.W. TAKING LINE	
SLOPE RIGHTS	
TOP OF CUT	
TOE OF SLOPE	

SURVEYED BY : VTRANS
 SURVEYED DATE : JUNE 2011

DATUM
 VERTICAL NAVD 88
 HORIZONTAL NAD 83 (07)

THESE PLANS ARE SUBJECT TO SUCH ENGINEERING CHANGES AS MAY BE REQUIRED BY THE FEDERAL HIGHWAY ADMINISTRATION OR THE DIRECTOR OF PROGRAM DEVELOPMENT.

CONSTRUCTION IS TO BE CARRIED ON IN ACCORDANCE WITH THESE PLANS AND THE STANDARD SPECIFICATIONS FOR CONSTRUCTION DATED 2011, AS APPROVED BY THE FEDERAL HIGHWAY ADMINISTRATION ON JULY 20, 2011 FOR USE ON THIS PROJECT, INCLUDING ALL SUBSEQUENT REVISIONS AND SUCH REVISED SPECIFICATIONS AND SPECIAL PROVISIONS AS ARE INCORPORATED IN THESE PLANS.



PROJECT MANAGER :	JENNIFER M. V. FITCH
PROJECT NAME :	ROCHESTER
PROJECT NUMBER :	BRF 0162 (16)
SHEET 59 OF 238 SHEETS	