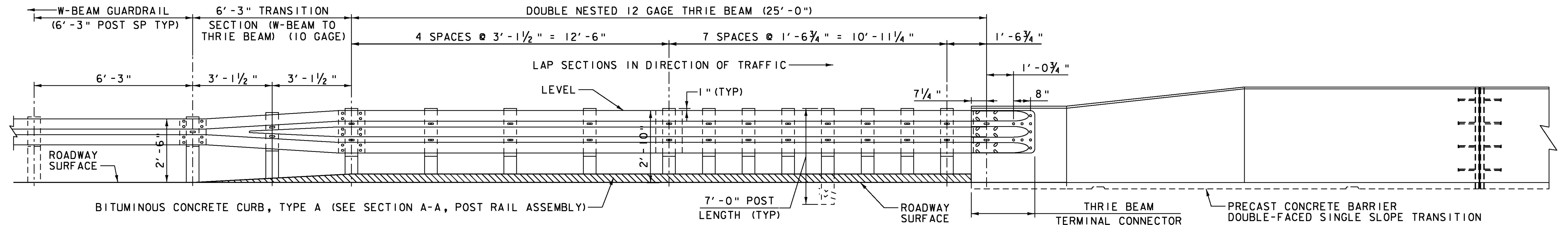


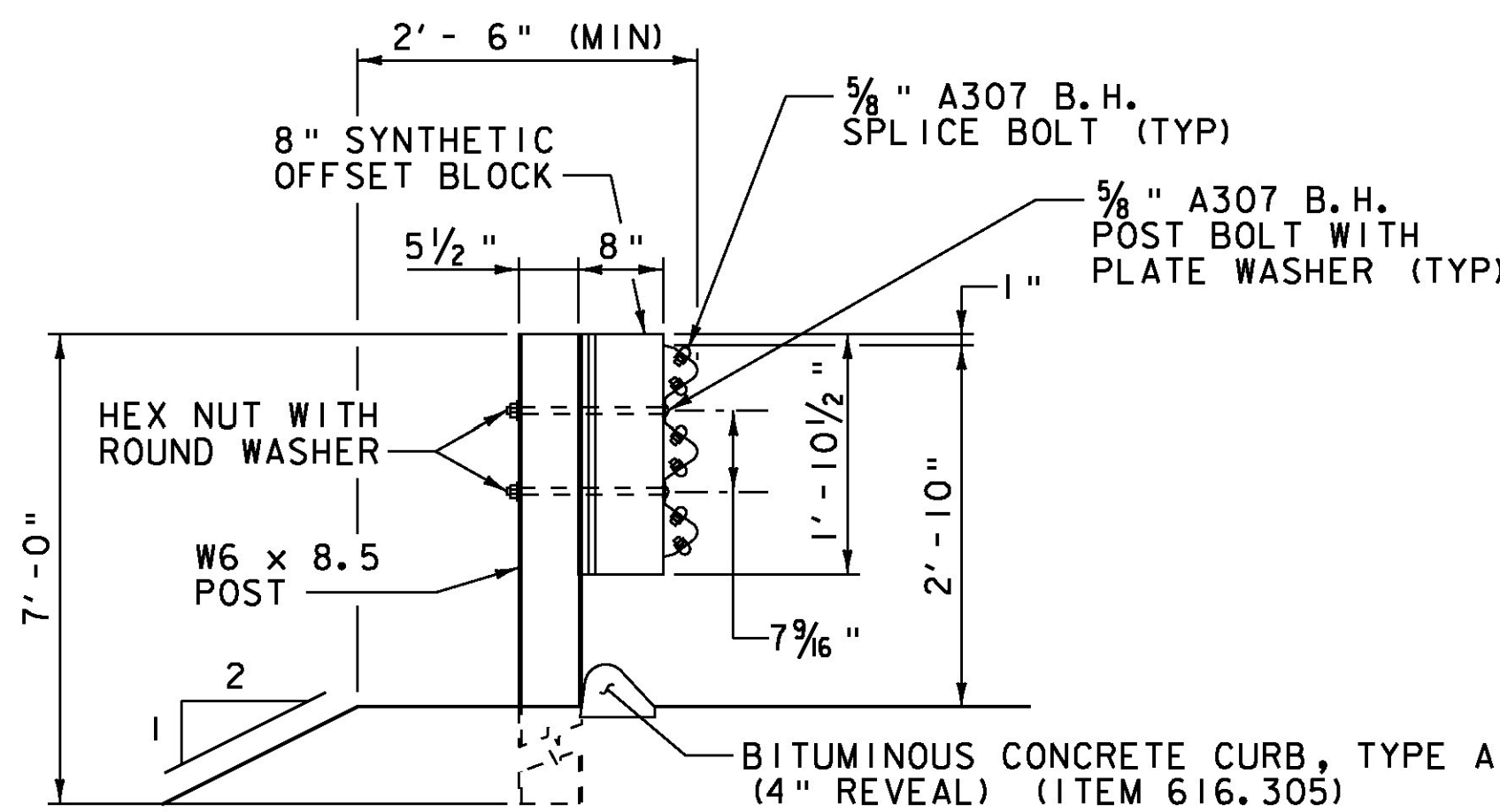
PLAN VIEW - CONCRETE BARRIER TO GUARDRAIL CONNECTION DETAIL (SINGLE-FACED THRIE BEAM GUARDRAIL)

SCALE 1/2" = 1'-0"



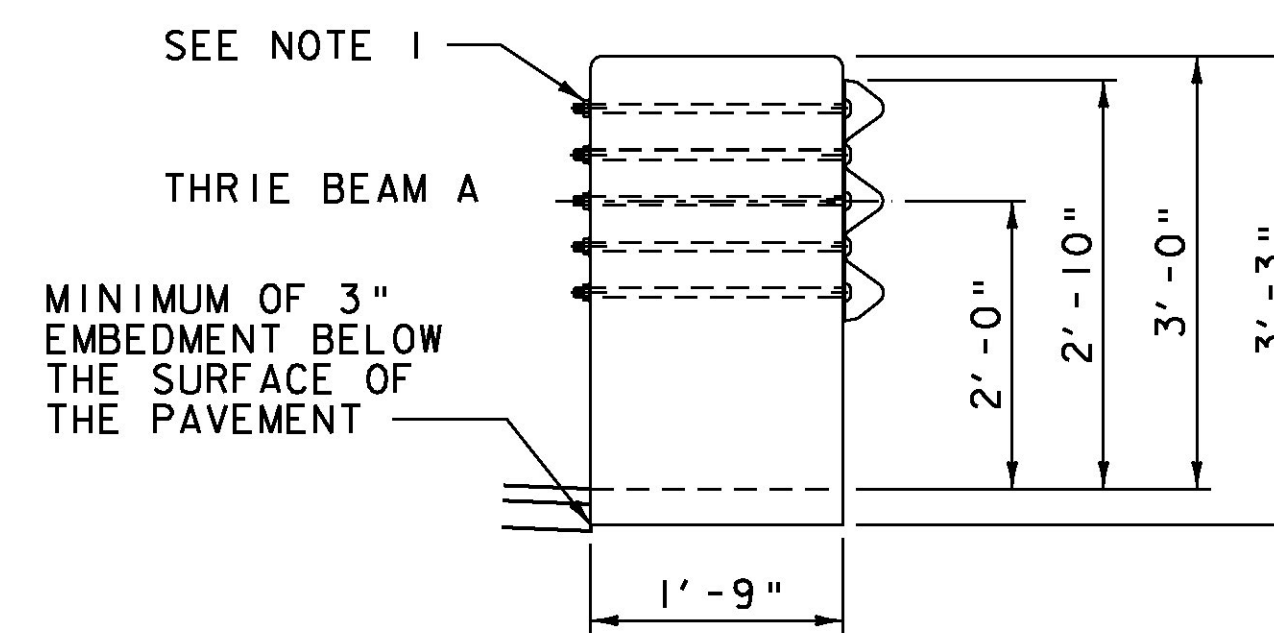
ELEVATION - APPROACH RAIL

SCALE 1/2" = 1'-0"



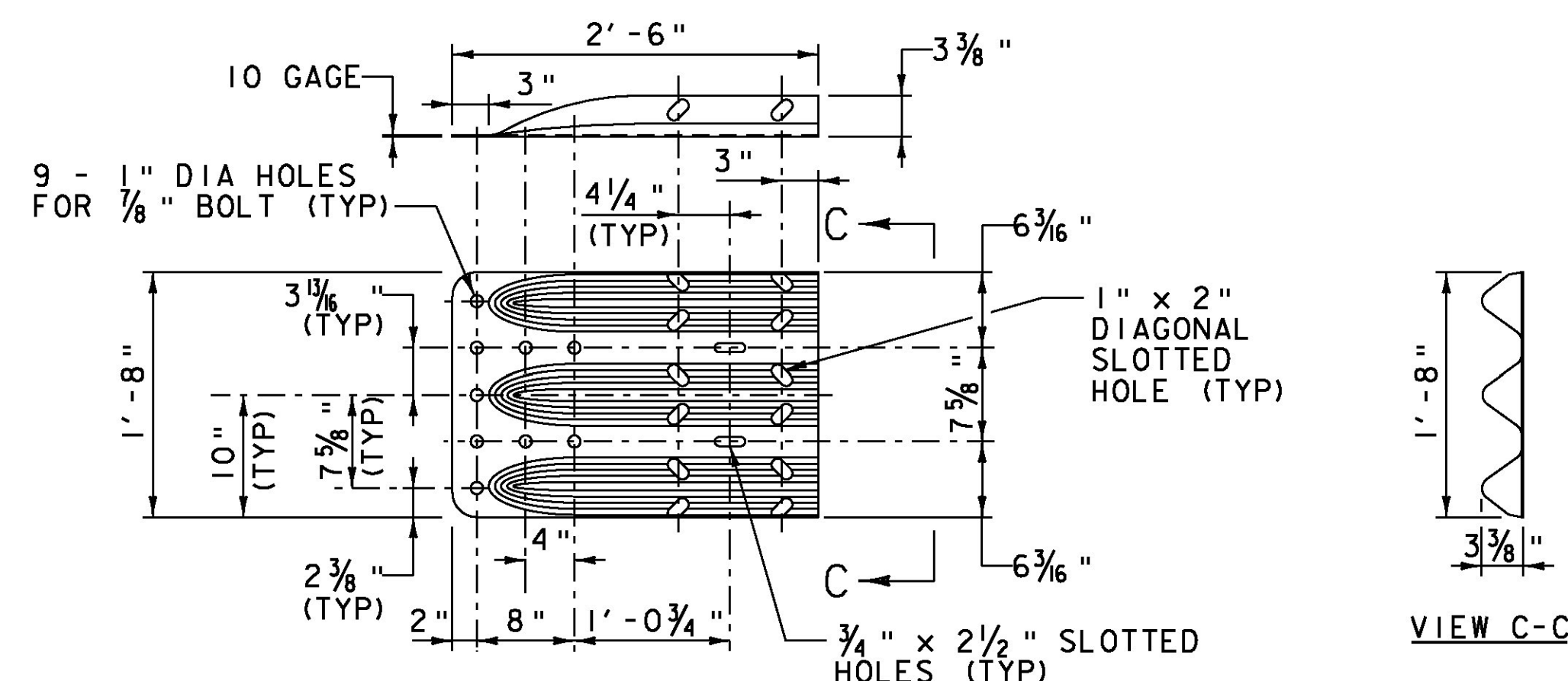
SECTION A-A (POST RAIL ASSEMBLY)

SCALE 3/4" = 1'-0"



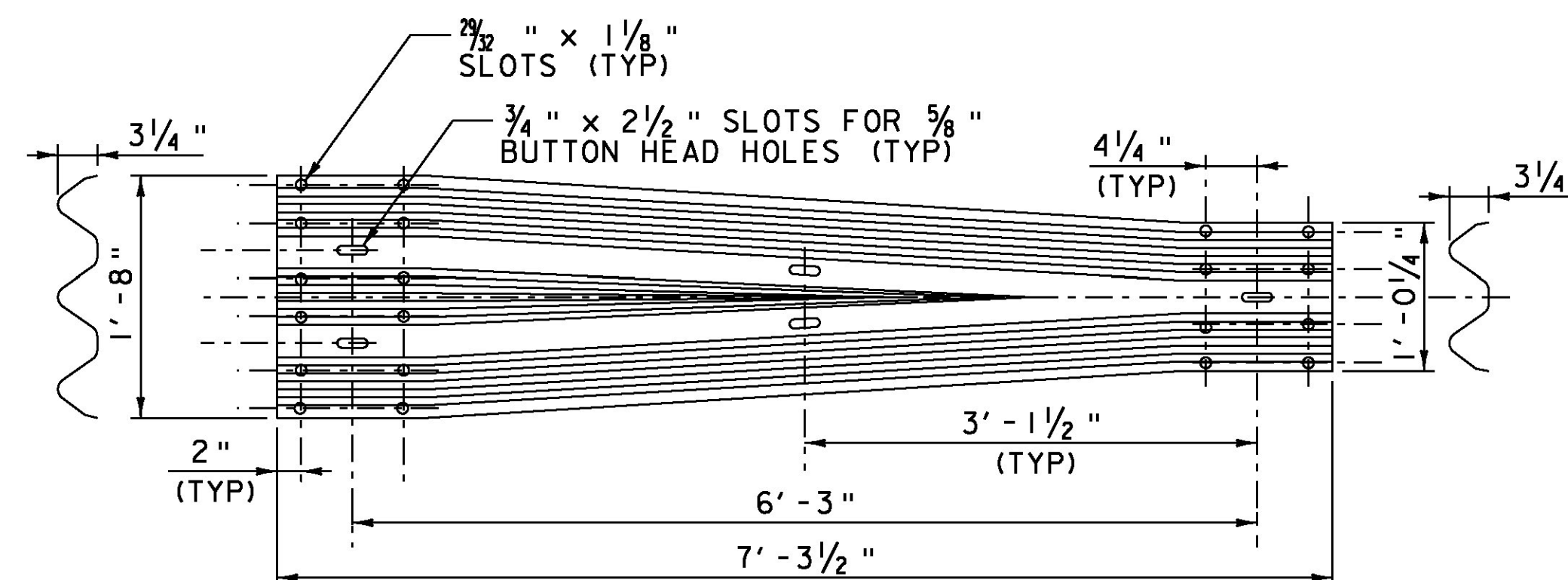
THRIE BEAM ATTACHMENT

SCALE 3/4" = 1'-0"



THRIE BEAM TERMINAL CONNECTOR

SCALE 1" = 1'-0"



THRIE BEAM TO W-BEAM TRANSITION SECTION

SCALE 1" = 1'-0"

NOTES:

1. THRIE BEAM SHALL BE FASTENED WITH 7*8" ASTM A325 BOLTS, NUTS AND WASHERS, (EPOXY THREADED INSERTS ARE OPTIONAL). ALL COSTS SHALL BE INCLUDED IN ITEM 900.620, "SPECIAL PROVISION (GUARDRAIL APPROACH SECTION TO CONCRETE MEDIAN BARRIER)".
2. ALL THRIE BEAM RAIL, INCLUDING TRANSITION SECTION, SHALL BE GALVANIZED 12 GAGE. ALL TERMINAL CONNECTORS SHALL BE GALVANIZED 10 GAGE.
3. CONNECTIONS TO CONCRETE BARRIER SHALL BE APPROVED 7*8" * GALVANIZED HIGH STRENGTH THROUGH BOLTS IN CORE DRILLED HOLES. CHECK ACTUAL HOLE SPACING BEFORE CORING BOLT HOLES.
4. ALL CONNECTIONS FOR THE THRIE BEAM RAIL AND TERMINAL CONNECTOR SHALL LAP IN THE DIRECTION OF TRAFFIC.

PROJECT NAME: ROCHESTER
PROJECT NUMBER: ER STP 0162(19)

FILE NAME: zilc334barrier_details.dgn PLOT DATE: 8/19/2013
PROJECT LEADER: S.E. BURBANK DRAWN BY: E.A. FIALA
DESIGNED BY: VHB CHECKED BY: S.E. BURBANK
BR 13 CONCRETE BARRIER DETAILS (3 OF 3) SHEET 45 OF 238