

GPS CONTROL POINTS

HVCTRL #200

RANGER  
 NORTH = 508946.58  
 EAST = 1556257.23  
 ELEV. = 868.8

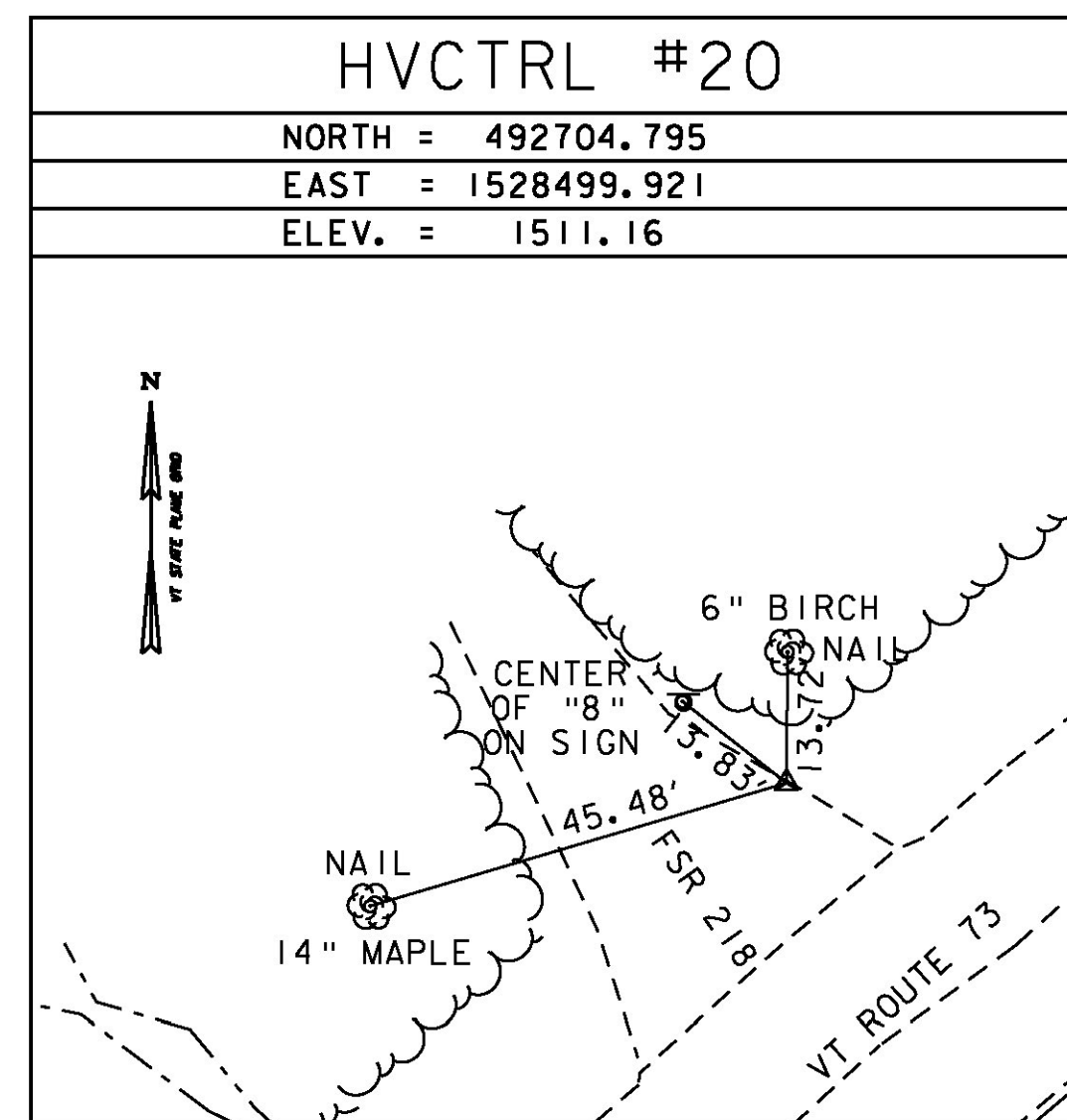
GENERAL LOCATION, ROCHESTER, VT. TO REACH FROM THE GREEN (VILLAGE SQUARE WITH GAZEBO) AND U.S. POST OFFICE, LOCATED IN THE CENTER OF ROCHESTER, GO NORTH ON ROUTE 100 FOR 2.82 KM (1.75 MI) TO THE SITE OF THE MARK ON THE RIGHT, EAST SIDE OF ROUTE 100. THE MARK IS NORTHWEST OF THE US FOREST SERVICE OFFICE BETWEEN VT ROUTE 100 AND A PARKING AREA. IT IS 55.0 M (180.4 FT) NORTHWEST OF THE NORTHWEST CORNER OF THE US FOREST SERVICE BUILDING, 20.0 M (65.6 FT) SOUTH OF THE CENTERLINE OF THE ENTRANCE DRIVE, AND 29.4 M (96.5 FT) WEST OF A POLE WITH NO NUMBER. A 24 INCH CORRUGATED METAL PIPE WITH A CAST IRON - MANHOLE STYLE COVER HAS BEEN SET VERTICALLY OVER THE MARK.

HVCTRL #20

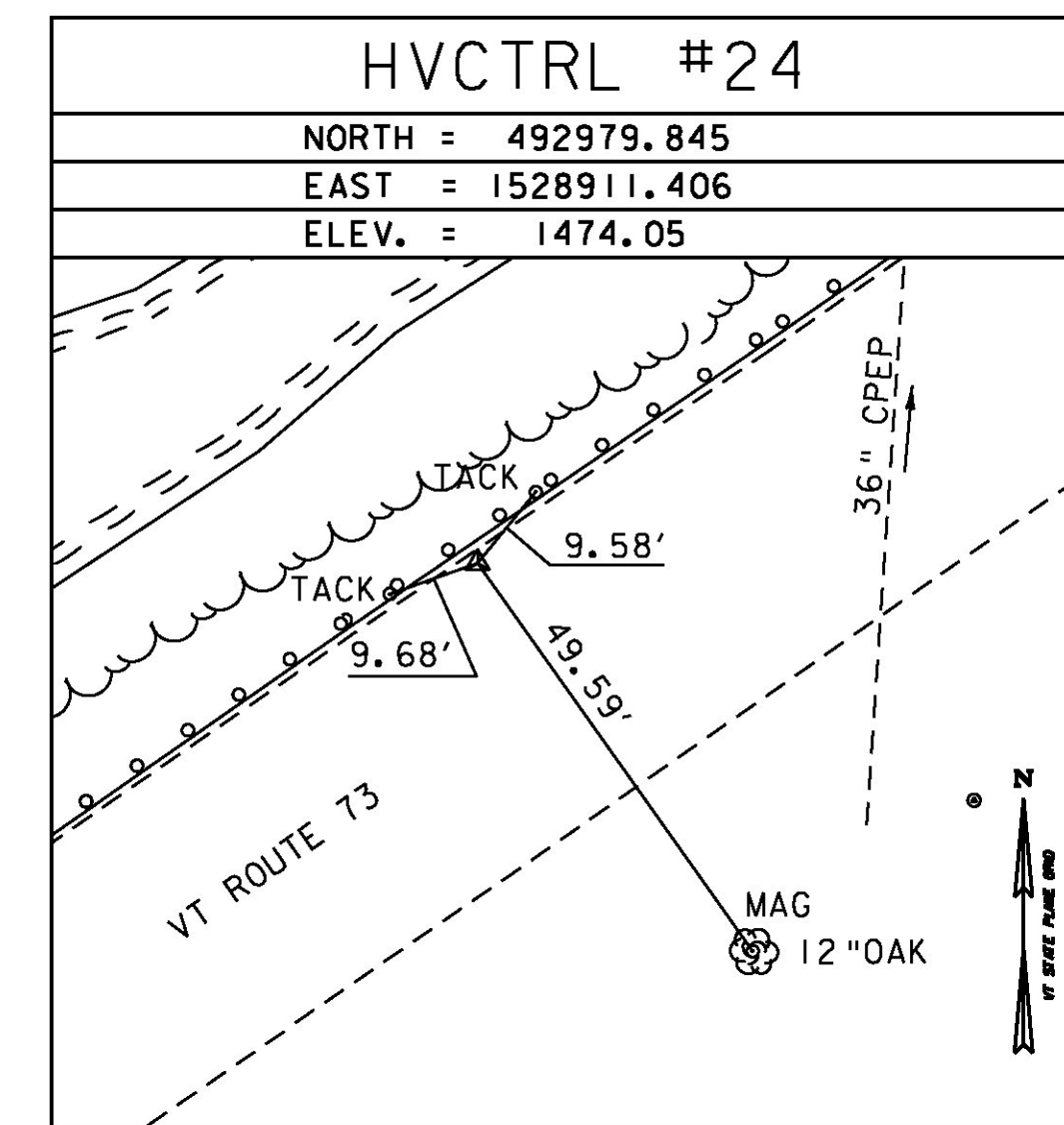
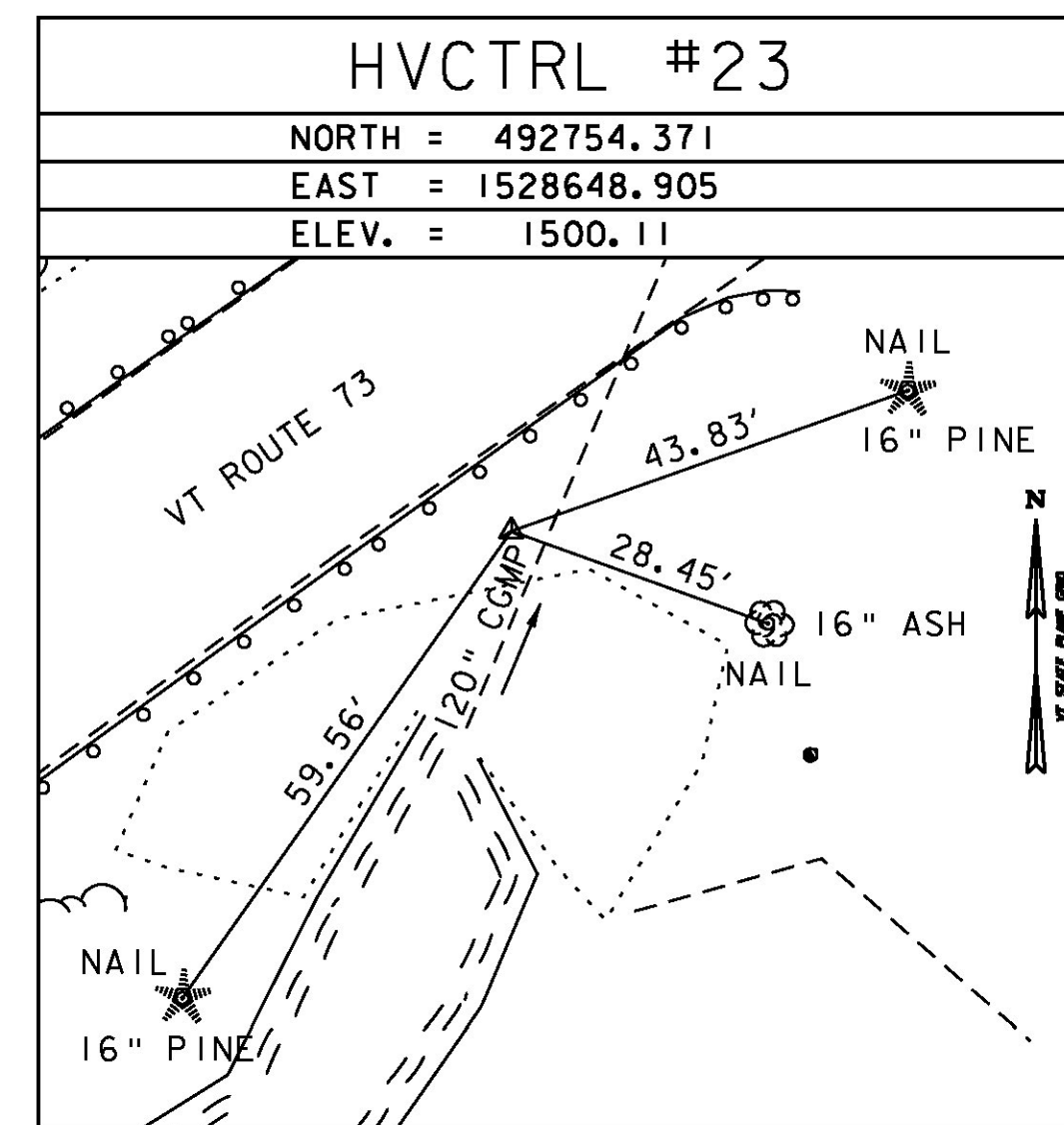
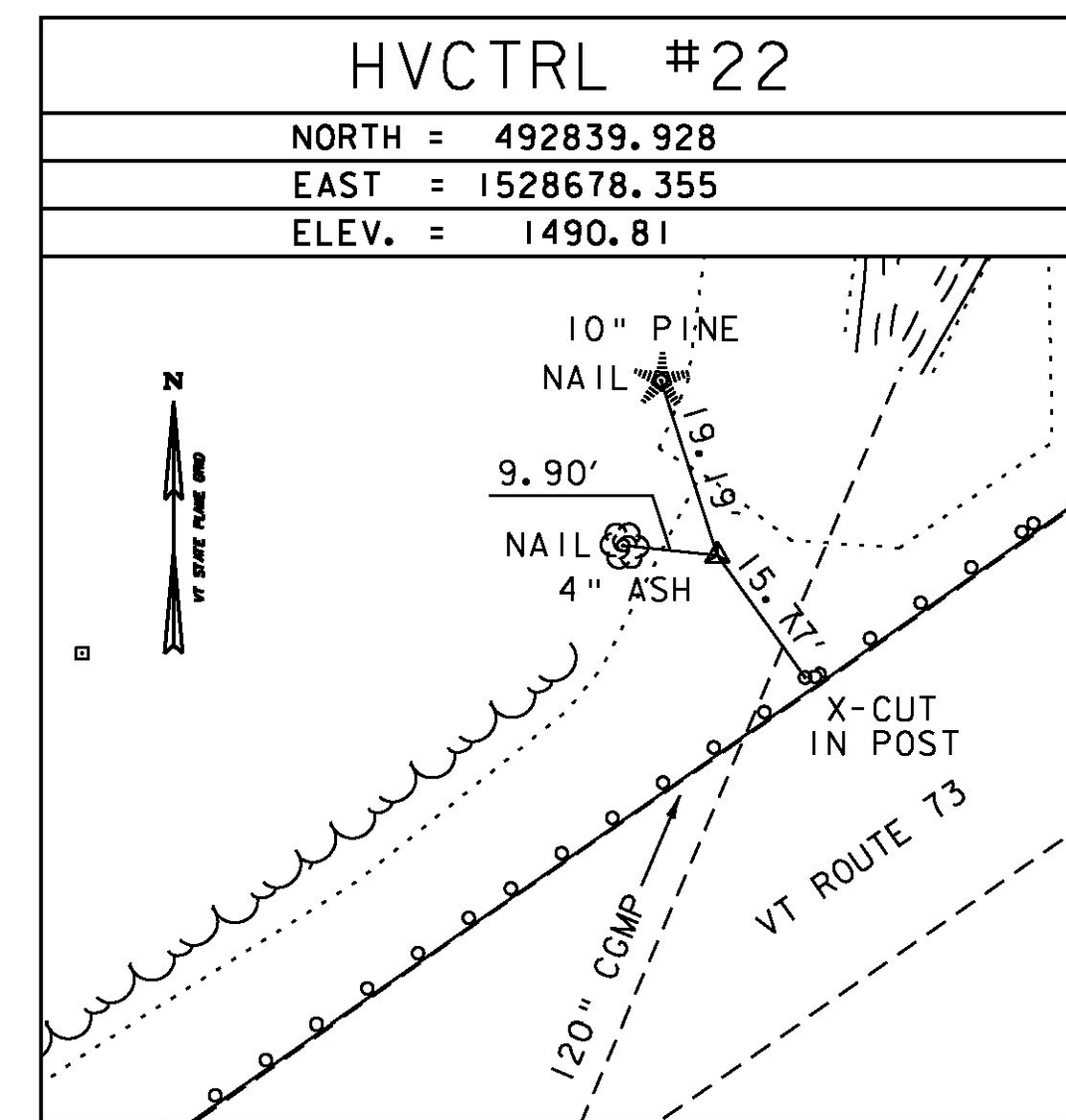
REBAR SET  
 NORTH = 492704.795  
 EAST = 1528499.921  
 ELEV. = 1511.16

STEEL REBAR SET WITH VHB PLASTIC CAP. SEE TRAVERSE TIE INFORMATION BELOW FOR LOCATION.

TRAVERSE TIES



• Main Traverse Completed 1/11/2012 by T.J. Gaudet



DATUM	
VERTICAL	NAVD 88
HORIZONTAL	NAD 83(2007)
ADJUSTMENT	COMPASS

PROJECT NAME: ROCHESTER	
PROJECT NUMBER: ER STP 0162(19)	
FILE NAME: zllc334+1.dgn	PLOT DATE: 8/19/2013
PROJECT LEADER: S.E. BURBANK	DRAWN BY: J.A. CONNOLLY
DESIGNED BY: VHB	CHECKED BY: B.M. KLINEFELTER
BR 13 TIE SHEET	SHEET 23 OF 238

