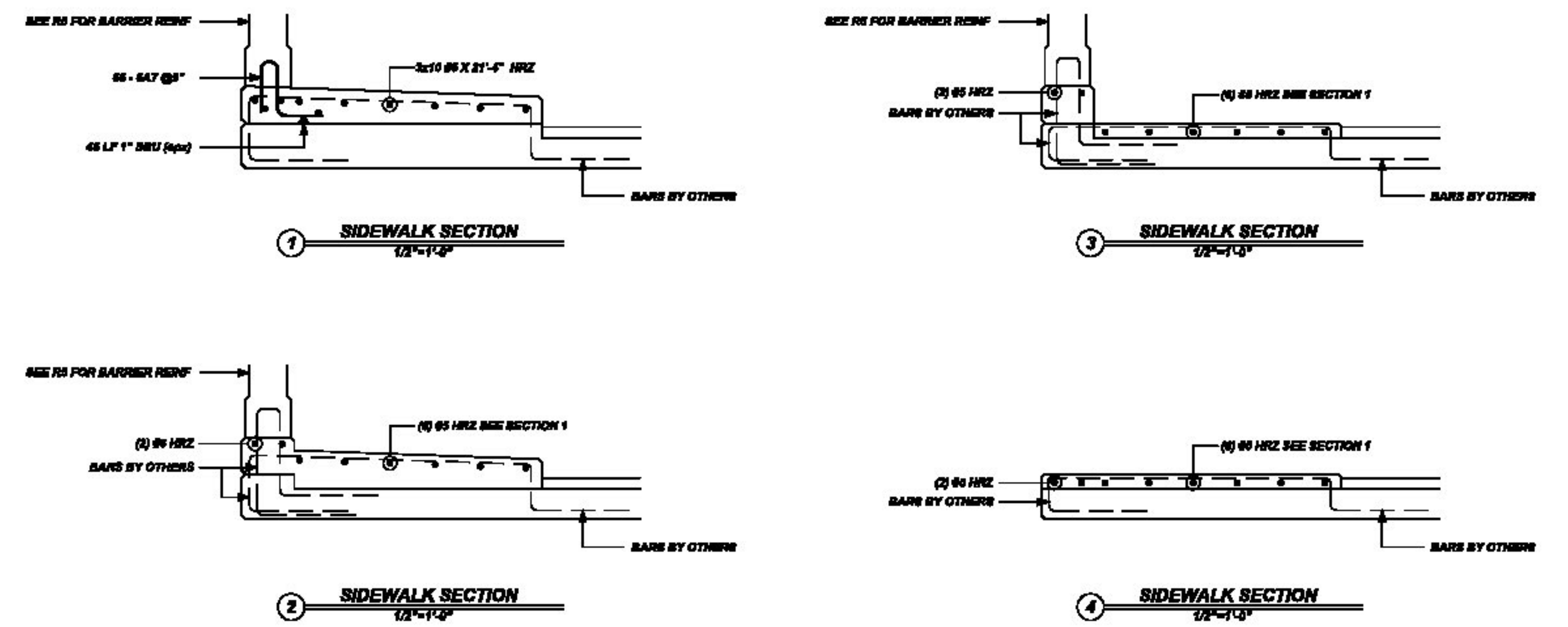
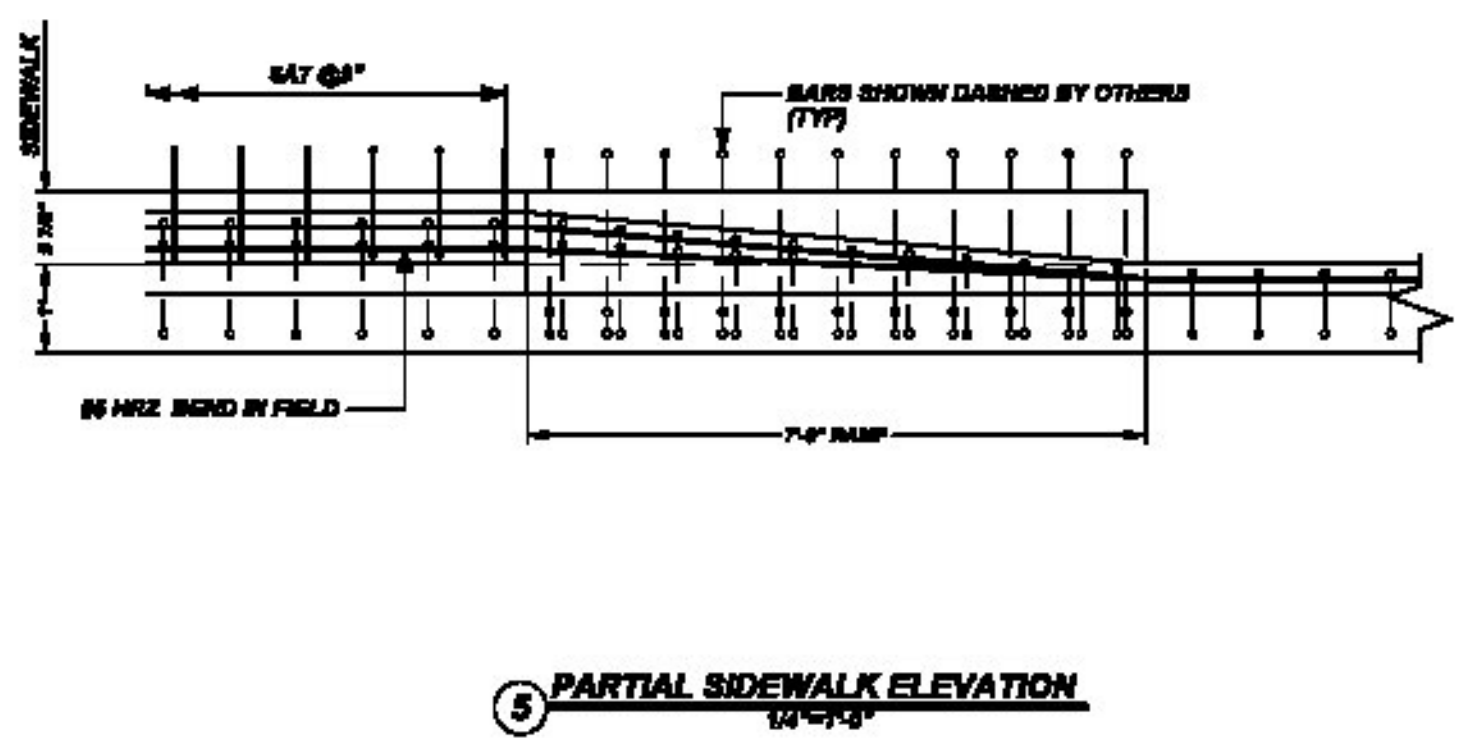


NOTICE
 SHORTAGES, IMPROPER FABRICATION OR CLAIMS FOR ANY OTHER REASON MUST BE REPORTED TO THIS COMPANY WITHIN 10 DAYS FROM ORIGINAL DELIVERY. THIS COMPANY ALSO RESERVES THE RIGHT TO FIELD INSPECT MATERIALS PRIOR TO REPLACEMENT OR RECONDITIONING OF MATERIALS AND WILL NOT BE LIABLE FOR CHARGES FROM WORK DONE IN THE FIELD WITHOUT PRIOR AUTHORIZATION FROM THIS COMPANY.
 REINFORCING STEEL PLACING DRAWING ONLY. USE IN CONJUNCTION WITH CONTRACT DRAWINGS & SPECIFICATIONS. ELEVATIONS & DIMENSIONS SHOWN ON DRAWING ARE FOR DETAILING PURPOSES ONLY AND SHOULD NOT BE USED FOR CONSTRUCTION UNLESS VERIFIED BY ENGINEER OR CONTRACTOR.

Bar No.	Qty	Bar Length	Type	Y	V	Y	V	Y	V	Y	V	Y	V
S7	2	2'-0"	1-2	Y	Y	Y	Y	Y	Y	Y	Y	Y	Y
S6	2	2'-0"	1-2	Y	Y	Y	Y	Y	Y	Y	Y	Y	Y

REBAR GRADE 60 ASTM A-775 EPOXY COATED LEVEL 2



Vermont Agency of Transportation
RECEIVED
 ON: April 14, 2015
 and Checked for
CONFORMANCE
 BY: Rob Young DATE: 04/15/2015

SHOP DRAWING REVIEW
 REVIEWED AS REQUIRED BY THE CONSTRUCTION CONTRACT DOCUMENTS AND APPROVED, BUT ONLY FOR CONFORMANCE TO THE DESIGN CONCEPT OF THE WORK AND SUBJECT TO FURTHER LIMITATIONS AND REQUIREMENTS CONTAINED IN THE CONSTRUCTION CONTRACT DOCUMENTS.
 REJECTED REVISE AND RESUBMIT APPROVED AS NOTED
 CORRECTIONS OR COMMENTS MADE ON THE SHOP DRAWINGS DURING THIS REVIEW DID NOT RELIEVE CONTRACTOR FROM COMPLIANCE WITH REQUIREMENTS OF THE DRAWINGS AND SPECIFICATIONS. THIS CHECK IS ONLY FOR REVIEW OF GENERAL CONFORMANCE WITH THE DESIGN CONCEPT OF THE PROJECT AND GENERAL COMPLIANCE WITH THE INFORMATION GIVEN IN THE CONTRACT DOCUMENTS. THE CONTRACTOR IS RESPONSIBLE FOR CONFIRMING AND CORRELATING ALL QUANTITIES AND DIMENSIONS, SELECTING FABRICATION PROCESSES AND TECHNIQUES OF CONSTRUCTION, COORDINATING THEIR WORK WITH THAT OF ALL OTHER TRADES AND PERFORMING THEIR WORK IN A SAFE AND SATISFACTORY MANNER.
 Job Number: 120121
 Reviewed by: SRB
 Date: 04/15/2015

REBAR GRADE 60 ASTM A-775 DUAL EPOXY COATED

TOP BARS	OTHER BARS	ABBREVIATIONS	BAR MARK SIZE EQUIVALENT
#3	#3	ADD. = Additional	Imperial
#4	#4	A.C.W. = Bottom of wall	Soft Metric
#5	#5	C.E. = Corner Bars	
#6	#6	D.M.G. = Diagonal	
#7	#7	D.O. = Door Opening	
#8	#8	D.W.L. = Down	
#9	#9	E.F. = End Face	
#10	#10	E.S. = End Side	
#11	#11	E.W. = End Way	
#12	#12	F.F. = Forming	
#13	#13	F.P. = Flat Face	
#14	#14	H.O.M.E. = Horizontal	
		I.P. = Inside Face	
		I.T.E.R.S. = Intersection	
		L.W. = Long Way	
		N.F. = Near Face	
		O.P. = Outside Face	
		S.W. = Short Way	
		T.M. = Top & Bottom	
		T.O.W. = Top of Wall	
		T.W. = Top	
		VERT. = Vertical	

REV NO.	DATE	SENT FOR	REV NO.	DATE	SENT FOR
2	4.14.15	REVISED PER COMMENTS			
1	4.8.15	REVISED PER COMMENTS			
0	2.13.15	APPROVAL			

HARMAC REBAR AND STEEL CORPORATION

 A Division of A.H. Harris & Sons, Inc.
 Formerly MacFarlane Steel
 P.O. Box 142
 Cornsop Road
 Fryeburg, ME 04037
 Tel. 800-294-4702
 Fax 207-936-3069
 301 Hardie Street
 Sayreville, NJ 03301
VT ROUTE 114 BRIDGE #13
 SIDEWALK REINFORCING
BURKE, VT
 CUSTOMER: T BUCK
 DESIGNER: CLD CONSULTING ENGINEERS
 DRAWN BY: T&P DATE: 3.13.15 JOB NO: M915J118 SHEET NO: R-4