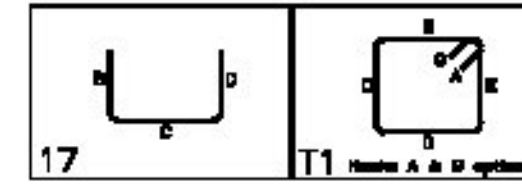


NOTICE

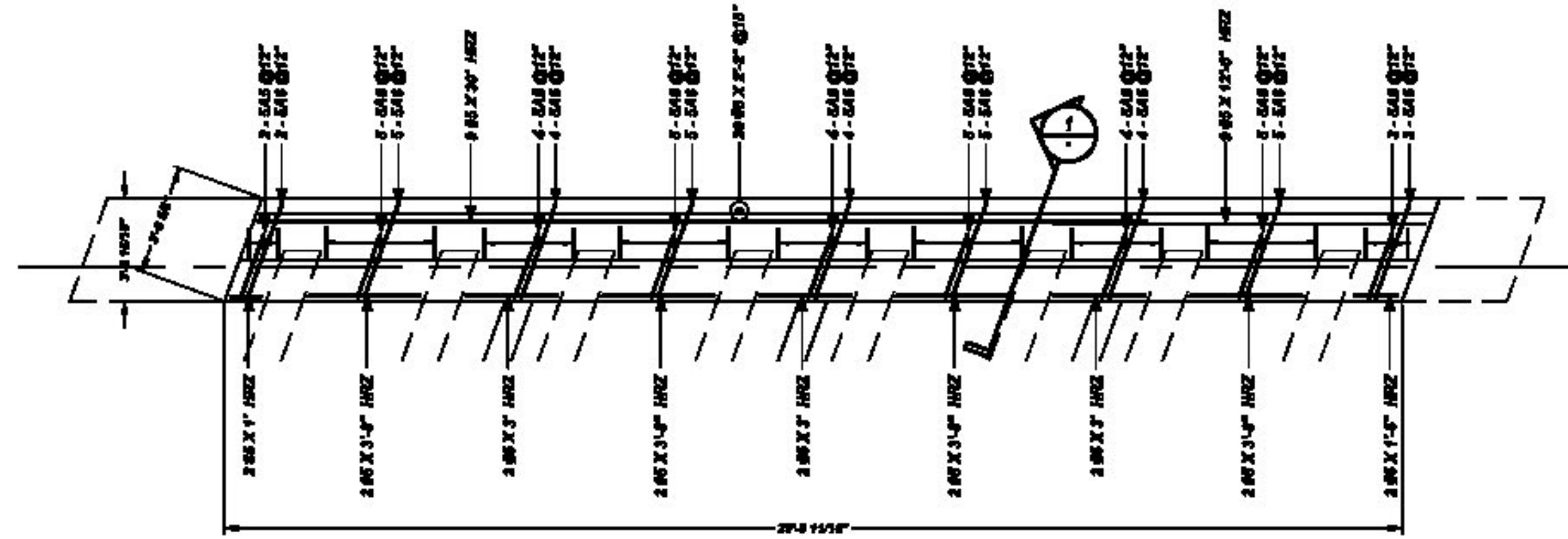
SHORTAGES, IMPROPER FABRICATION OR CLAIMS FOR ANY OTHER REASON MUST BE REPORTED TO THIS COMPANY WITHIN 10 DAYS FROM ORIGINAL DELIVERY. THIS COMPANY ALSO RESERVES THE RIGHT TO FIELD INSPECT MATERIALS PRIOR TO REPLACEMENT OR RECONDITIONING OF MATERIALS AND WILL NOT BE LIABLE FOR CHARGES FROM WORK DONE IN THE FIELD WITHOUT PRIOR AUTHORIZATION FROM THIS COMPANY.

REINFORCING STEEL PLACING DRAWING ONLY. USE IN CONJUNCTION WITH CONTRACT DRAWINGS & SPECIFICATIONS. ELEVATIONS & DIMENSIONS SHOWN ON DRAWING ARE FOR DETAILING PURPOSES ONLY AND SHOULD NOT BE USED FOR CONSTRUCTION UNLESS VERIFIED BY ENGINEER OR CONTRACTOR.

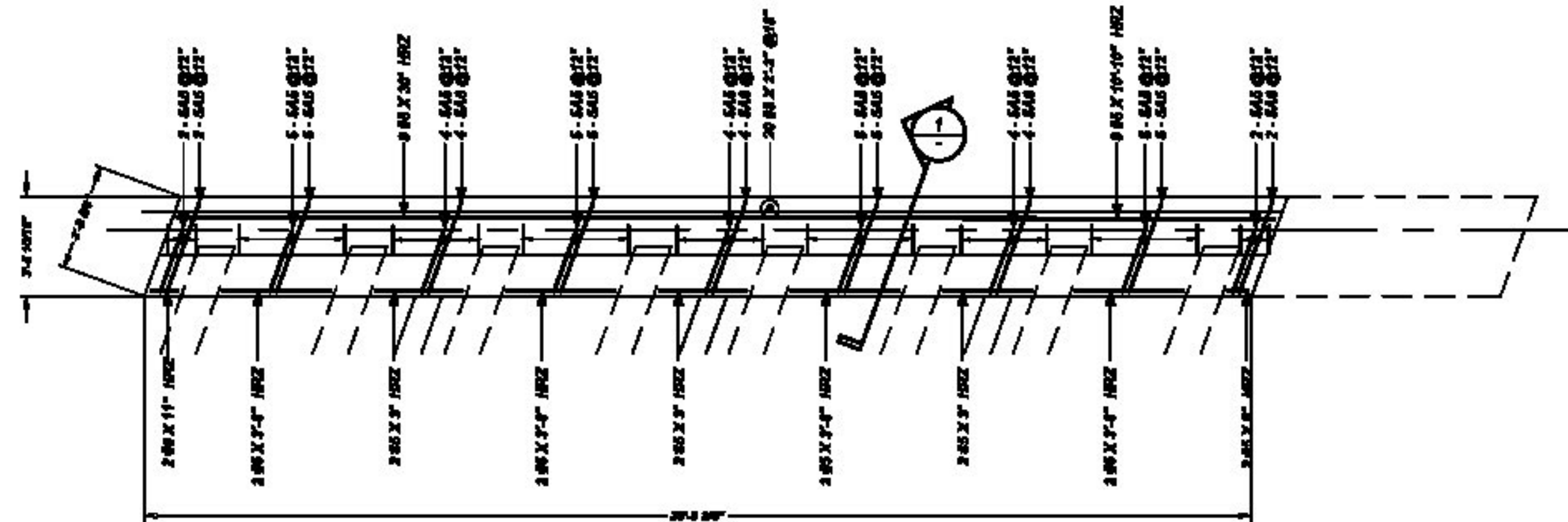
Sheet No.	Sheet Title	Scale	Proj. No.	Proj. Title	Drawn By	Checked By	Date
17	ABUTMENT 1 PLAN END CLOSURE POUR	1/8"=1'-0"	13-114	VT ROUTE 114 BRIDGE #13	SRB	SRB	04/15/2015



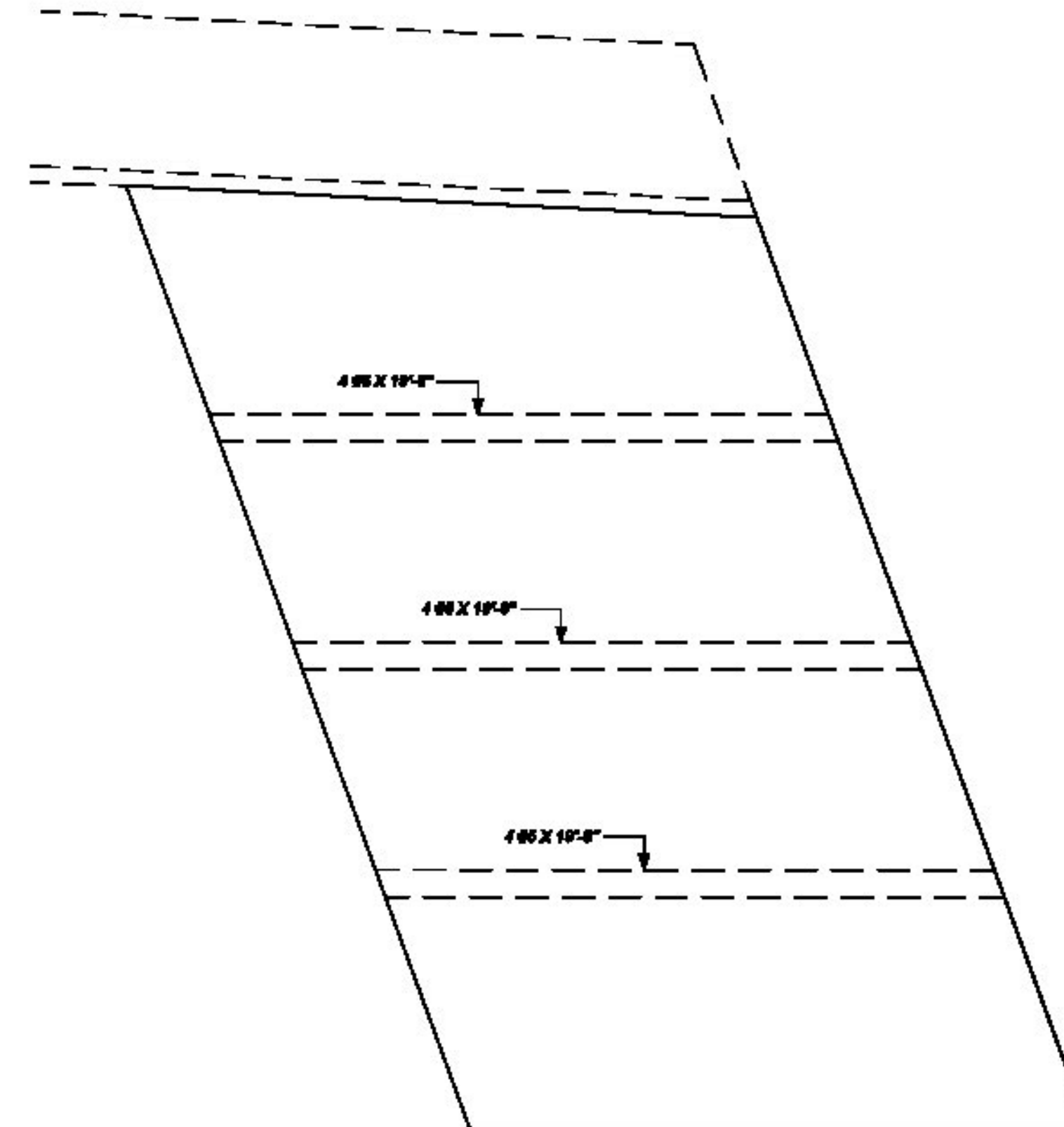
STOCK MATERIAL
60 X 30'



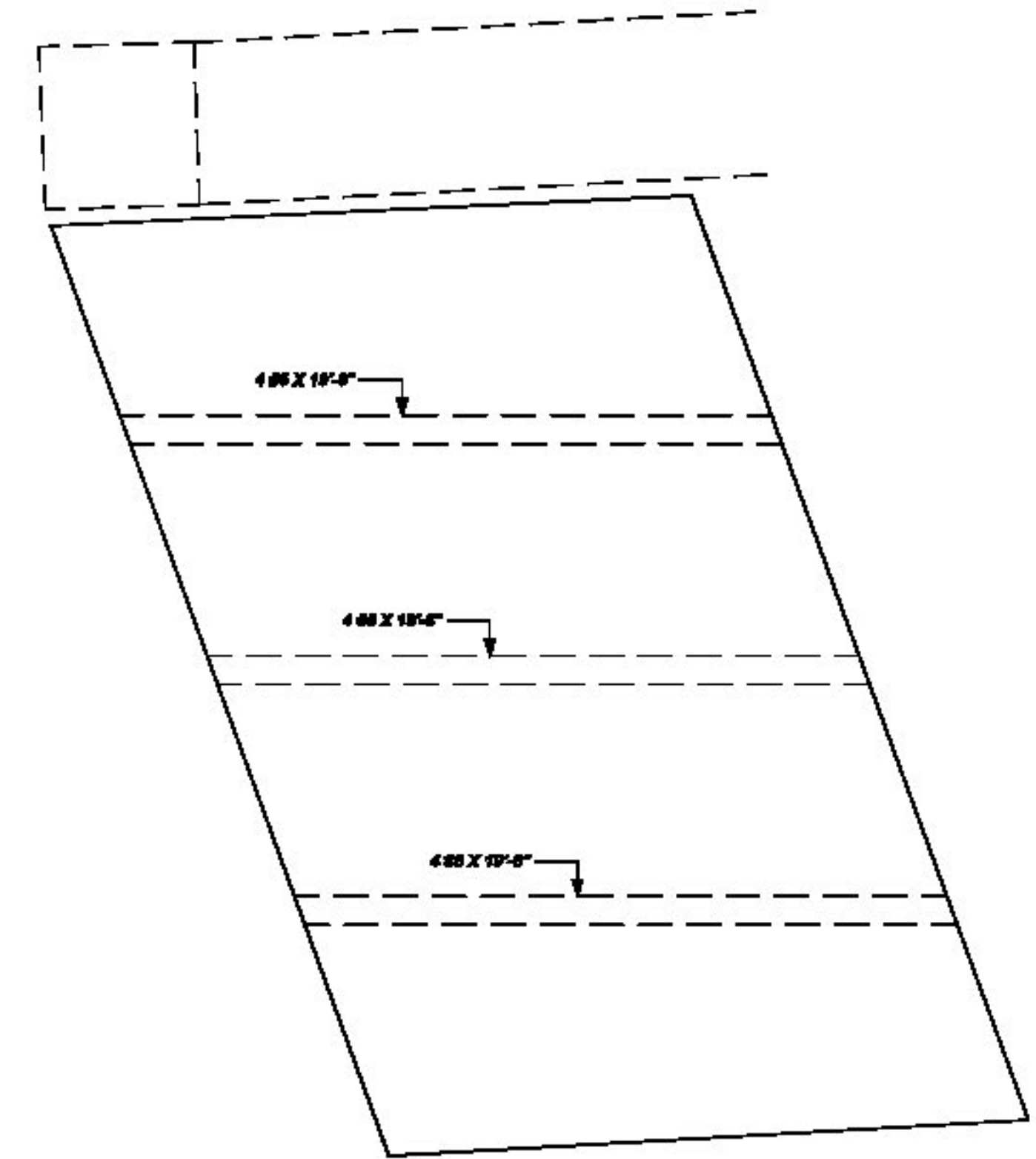
ABUTMENT 1 PLAN
END CLOSURE POUR
1/8"=1'-0"



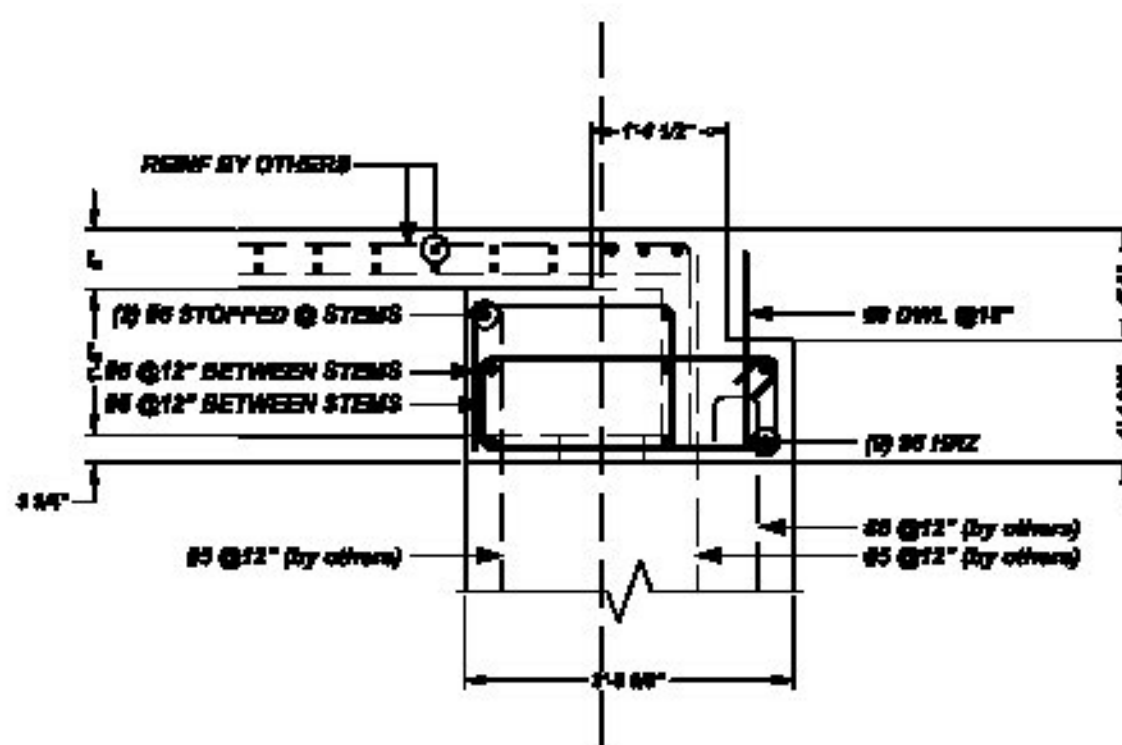
ABUTMENT 2 PLAN
END CLOSURE POUR
1/8"=1'-0"



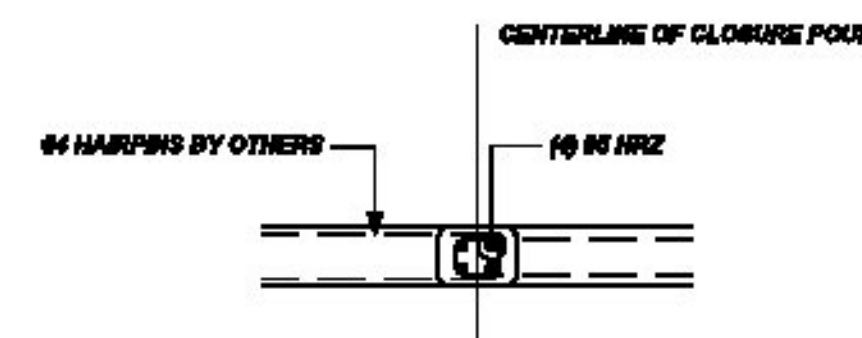
APPROACH SLAB 1
CLOSURE POUR PLAN
1/8"=1'-0"



APPROACH SLAB 2
CLOSURE POUR PLAN
1/8"=1'-0"



END CLOSURE SECTION
1/2"=1'-0"



JOINT DETAIL SECTION
1/2"=1'-0"

Vermont Agency of Transportation

RECEIVED

ON: April 14, 2015

and Checked for

CONFORMANCE

BY: Rob Young DATE: 04/15/2015

REBAR GRADE 60 ASTM A-775 EPOXY COATED LEVEL 2

SHOP DRAWING REVIEW

REVIEWED AS REQUIRED BY THE CONSTRUCTION CONTRACT DOCUMENTS AND APPROVED ONLY FOR CONFORMANCE TO THE DESIGN CONCEPT OF THE WORK, AND SUBJECT TO FURTHER LIMITATIONS AND REQUIREMENTS CONTAINED IN THE CONSTRUCTION CONTRACT DOCUMENTS.

REVIEWED REJECTED REVISE AND RESUBMIT APPROVED AS NOTED

CORRECTIONS OR COMMENTS MADE ON THE SHOP DRAWINGS DURING THIS REVIEW DO NOT RELIEVE CONTRACTOR FROM COMPLIANCE WITH REQUIREMENTS OF THE DRAWINGS AND SPECIFICATIONS. THIS CHECK IS ONLY FOR REVIEW OF GENERAL CONFORMANCE WITH THE DESIGN CONCEPT OF THE PROJECT AND GENERAL COMPLIANCE WITH THE INFORMATION GIVEN IN THE CONTRACT DOCUMENTS. THE CONTRACTOR IS RESPONSIBLE FOR CORRECTING AND CORRELATING ALL QUANTITIES AND DIMENSIONS, SELECTING FABRICATION PROCESSES AND TECHNIQUES OF CONSTRUCTION, COORDINATING THEIR WORK WITH THAT OF ALL OTHER TRADES, AND PERFORMING THEIR WORK IN A SAFE AND SATISFACTORY MANNER.

CDL Consulting Engineers
440 Cornwell Street
Montpelier, VT 05602
Tel: 802-249-0223

Job Number: 120121
Reviewed by: SRB
Date: 04/15/2015

REBAR GRADE 60 ASTM A-775 DUAL EPOXY COATED		ABBREVIATIONS		BAR MARK SIZE EQUIVALENT	
SPLICES USED		A.O.W. = Additional		Imperial	
CLASS B 4,000 psi UNO		C.B. = Corner Bars		Soft Metric	
TOP BARS	OTHER BARS	D.M.G. = Diagonal			
#3	#3	D.O. = Door Opening			
#4	#4	D.W.L. = Down			
#5	#5	E.F. = End Face		#3 #10	
#6	#6	E.S. = End Side		#4 #13	
#7	#7	E.W. = End Way		#5 #16	
#8	#8	F.F. = Face		#6 #19	
#9	#9	F.F. = Face		#7 #22	
#10	#10	H.O.N.E. = Horizontal		#8 #25	
#11	#11	I.F. = Inside Face		#9 #29	
#14	#14	I.W. = Intersection		#10 #32	
		L.W. = Long Way		#11 #36	
		N.F. = Near Face			
		O.F. = Outside Face			
		S.W. = Short Way			
		T.M. = Top & Bottom			
		T.O.W. = Top of Wall			
		VERT. = Vertical			

HARMAC REBAR AND STEEL CORPORATION

HARMAC

A Division of A.H. Harris & Sons, Inc.
Formerly MacFarlane Steel

P.O. Box 142
Cornish Road
Fryeburg, ME 04037
Tel: 606-294-4702
Fax: 207-936-3066

301 Hartle Street
Sayreville, NJ 03301

VT ROUTE 114 BRIDGE #13
END CLOSURE POUR, APPROACH SLAB CLOSURE POUR
BURKE, VT

CUSTOMER: T BUCK
DESIGNER: CLD CONSULTING ENGINEERS

DRAWN BY	DATE	JOB NO	SHEET NO.
T&P	3.13.15	M915J118	R-3