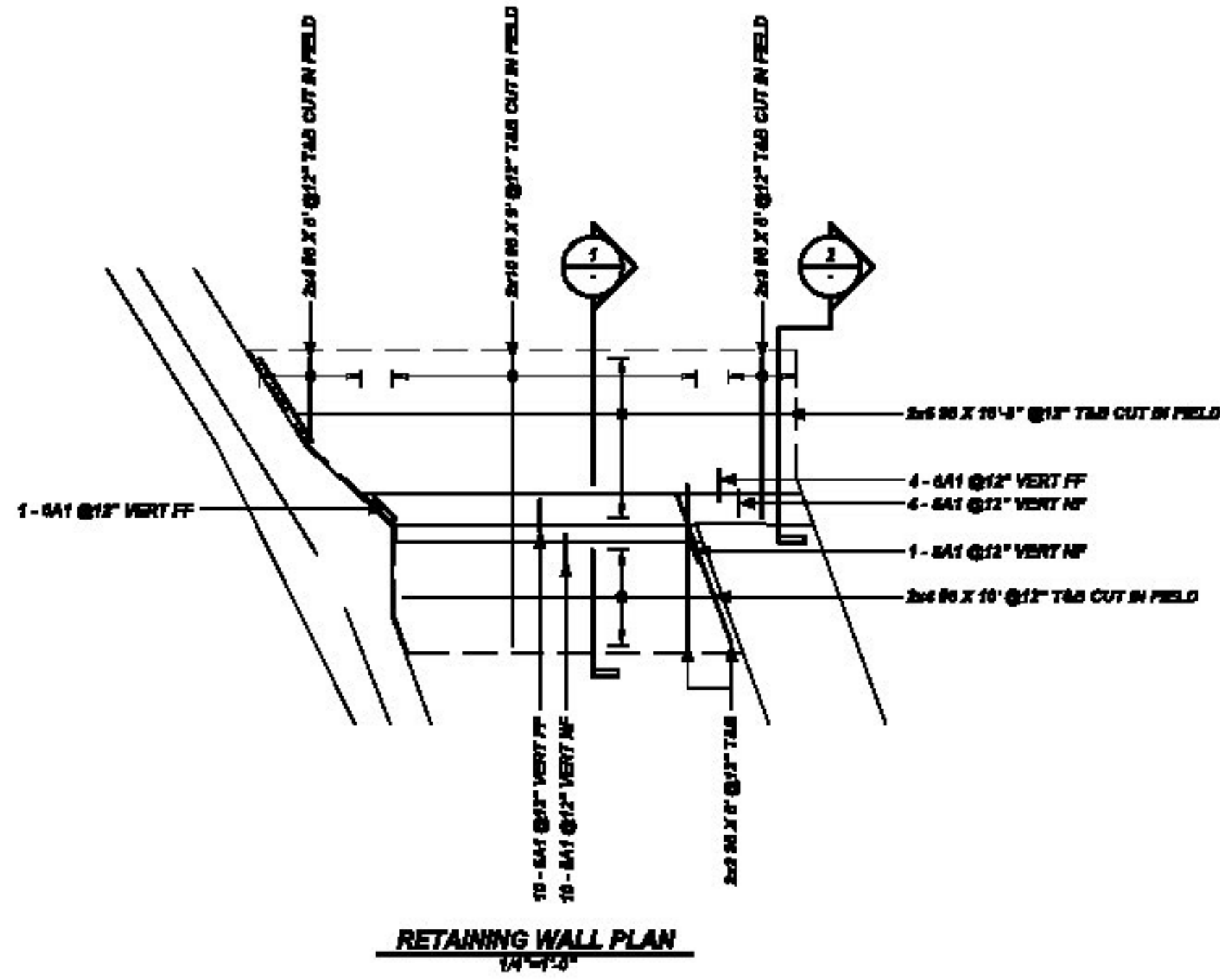


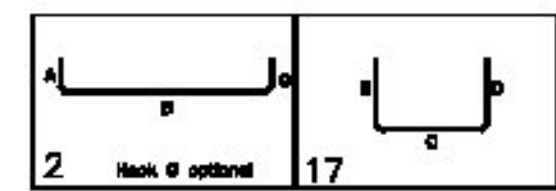
NOTICE

SHORTAGES, IMPROPER FABRICATION OR CLAIMS FOR ANY OTHER REASON MUST BE REPORTED TO THIS COMPANY WITHIN 10 DAYS FROM ORIGINAL DELIVERY. THIS COMPANY ALSO RESERVES THE RIGHT TO FIELD INSPECT MATERIALS PRIOR TO REPLACEMENT OR RECONDITIONING OF MATERIALS AND WILL NOT BE LIABLE FOR CHARGES FROM WORK DONE IN THE FIELD WITHOUT PRIOR AUTHORIZATION FROM THIS COMPANY.

REINFORCING STEEL PLACING DRAWING ONLY. USE IN CONJUNCTION WITH CONTRACT DRAWINGS & SPECIFICATIONS. ELEVATIONS & DIMENSIONS SHOWN ON DRAWING ARE FOR DETAILING PURPOSES ONLY AND SHOULD NOT BE USED FOR CONSTRUCTION UNLESS VERIFIED BY ENGINEER OR CONTRACTOR.

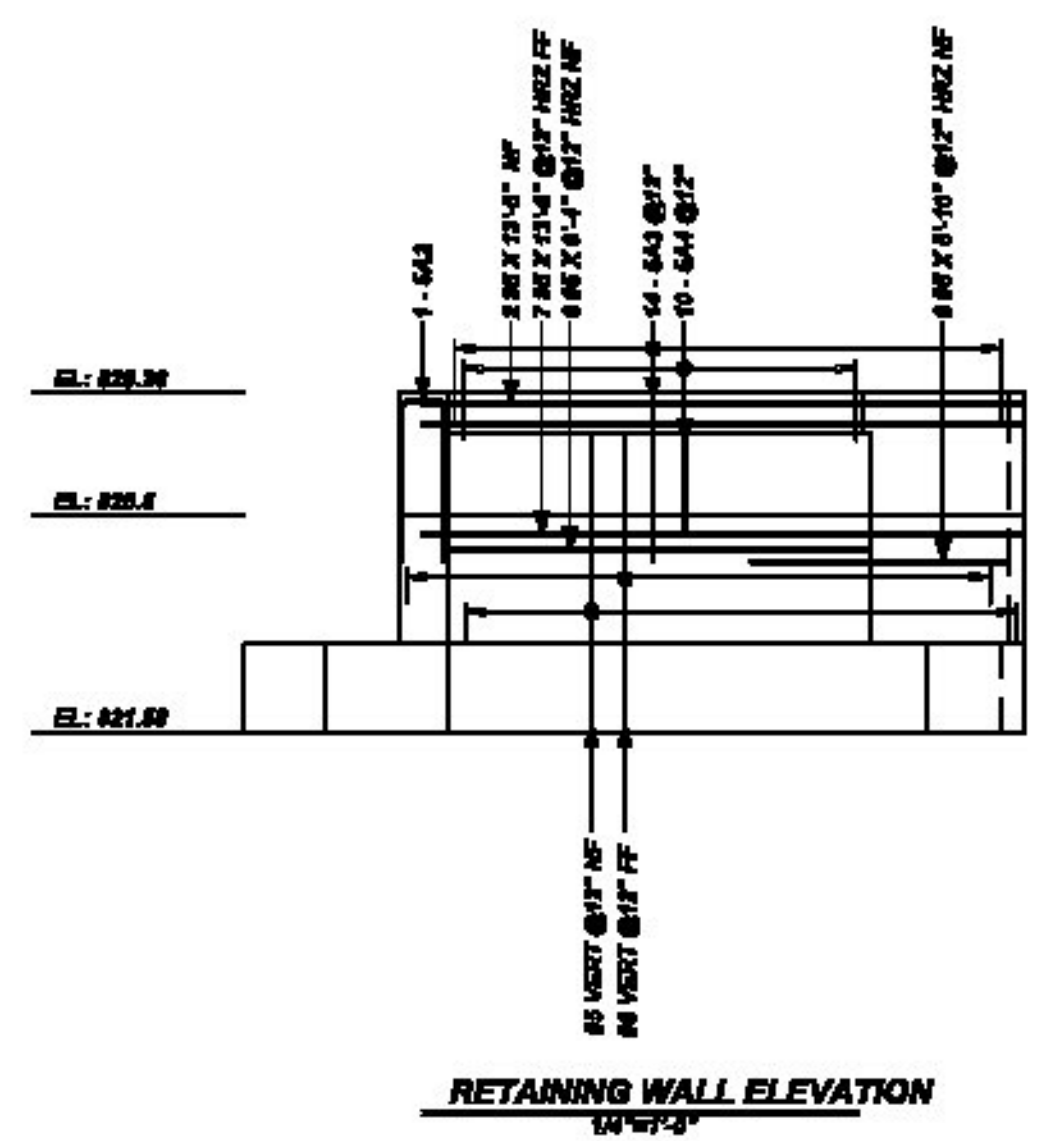


Bar No.	Qty	Size	Length	Sp.	X	Y	Y	Y	Y	Y	Y	Y	Y	Y
10	1	#4	7'-0"	1	0	0	0	0	0	0	0	0	0	0
11	1	#4	7'-0"	1	0	0	0	0	0	0	0	0	0	0
12	1	#4	7'-0"	1	0	0	0	0	0	0	0	0	0	0
13	1	#4	7'-0"	1	0	0	0	0	0	0	0	0	0	0
14	1	#4	7'-0"	1	0	0	0	0	0	0	0	0	0	0



SAMPLE BARS (RET WALL)
 1 #4 X 9' @12" SAMPLE
 1 - #41 @12" SAMPLE
 1 #4 X 12'-0" @12" SAMPLE
 1 - #41 @12" SAMPLE

REBAR GRADE 60 ASTM A-775 EPOXY COATED LEVEL 1



Vermont Agency of Transportation
RECEIVED
 ON: April 14, 2015
 and Checked for
CONFORMANCE
 BY: Rob Young DATE: 04/15/2015

SHOP DRAWING REVIEW

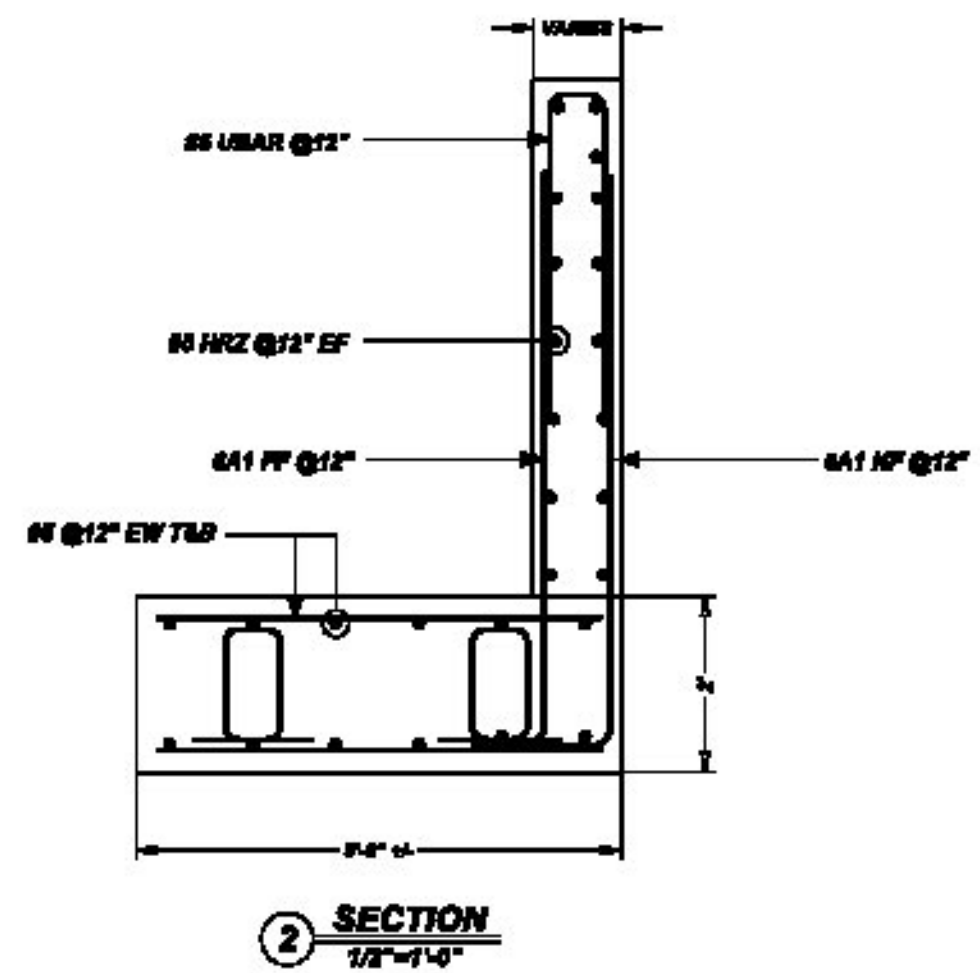
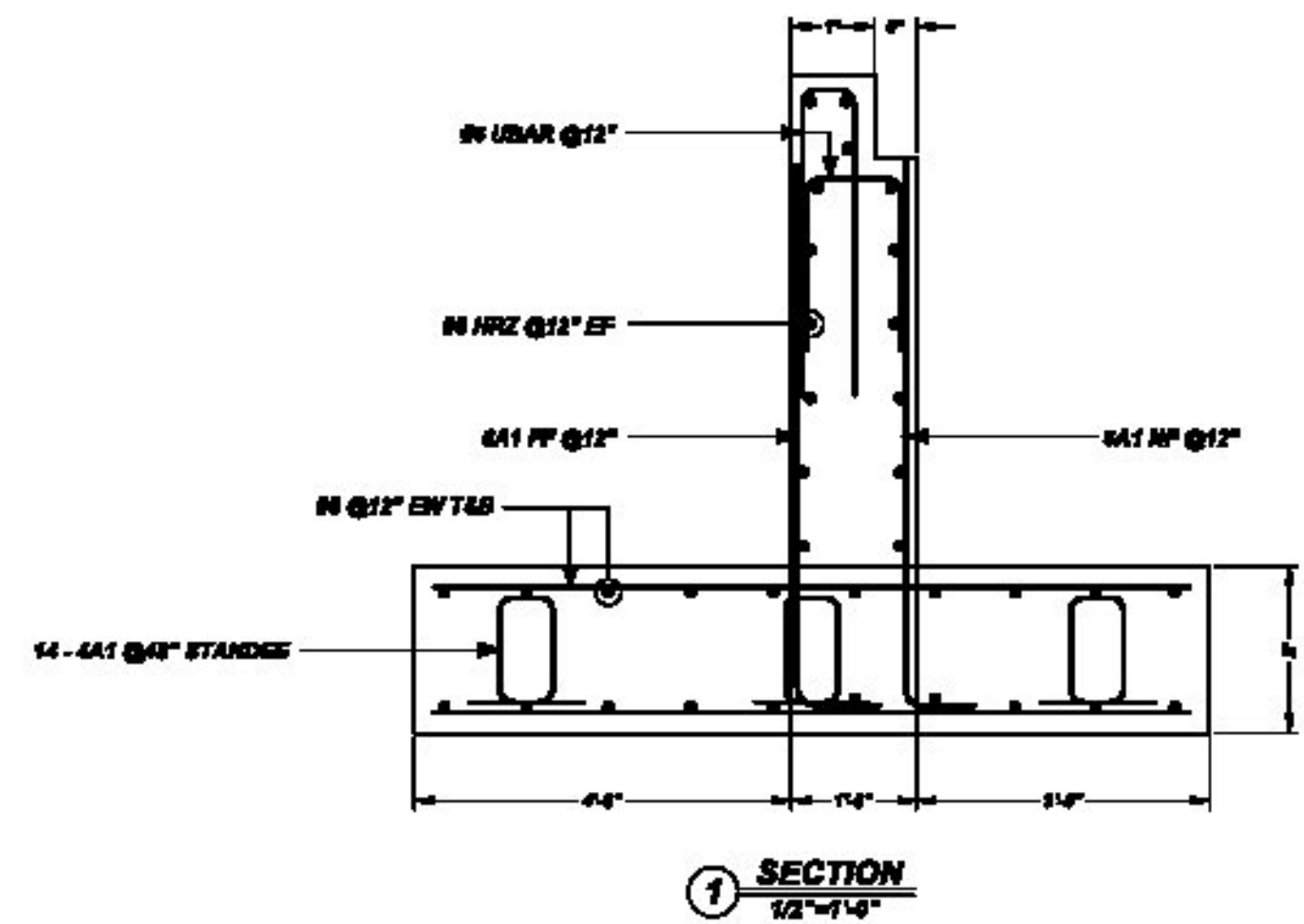
REVIEWED AS REQUIRED BY THE CONSTRUCTION CONTRACT DOCUMENTS AND APPROVED, BUT ONLY FOR CONFORMANCE TO THE DESIGN CONCEPT OF THE WORK, AND SUBJECT TO FURTHER LIMITATIONS AND REQUIREMENTS CONTAINED IN THE CONSTRUCTION CONTRACT DOCUMENTS.

REJECTED REVISE AND RESUBMIT APPROVED AS NOTED

CORRECTIONS OR COMMENTS MADE ON THE SHOP DRAWINGS DURING THIS REVIEW DO NOT RELIEVE CONTRACTOR FROM COMPLIANCE WITH REQUIREMENTS OF THE DRAWINGS AND SPECIFICATIONS. THIS CHECK IS ONLY FOR REVIEW OF GENERAL CONFORMANCE WITH THE DESIGN CONCEPT OF THE PROJECT AND GENERAL COMPLIANCE WITH THE INFORMATION GIVEN IN THE CONTRACT DOCUMENTS. THE CONTRACTOR IS RESPONSIBLE FOR CONFIRMING AND CORRELATING ALL QUANTITIES AND DIMENSIONS, SELECTING FABRICATION PROCESSES AND TECHNIQUES OF CONSTRUCTION, COORDINATING THEIR WORK WITH THAT OF ALL OTHER TRADES AND PERFORMANCE THEIR WORK IN A SAFE AND SATISFACTORY MANNER.

CLD Consulting Engineers
 240 Cornish Street
 Fryeburg, ME 04037
 207-936-4702

Job Number: 120121
 Prepared by: SRB
 Date: 04/15/2015



REBAR GRADE 60 ASTM A-775 EPOXY COATED

TOP BARS	OTHER BARS	ABBREVIATIONS	BAR MARK SIZE EQUIVALENT
#3	#3	ADD = Additional	Inverted #3 #10
#4	#4	A.O.W. = Bottom of wall	#4 #13
#5	#5	C.B. = Corner Bars	#5 #16
#6	#6	D.M.O. = Diagonal	#6 #19
#7	#7	D.O. = Door Opening	#7 #22
#8	#8	D.M.S. = Dowels	#8 #25
#9	#9	E.F. = End Face	#9 #29
#10	#10	E.S. = End Side	#10 #32
#11	#11	E.W. = End Way	#11 #36
#12	#12	F.F. = Facing	
		F.F. = Far Face	
		HORIZ. = Horizontal	
		I.P. = Inside Face Intersection	
		L.W. = Long Way	
		N.F. = Near Face	
		O.F. = Outside Face	
		S.W. = Short Way	
		T.M. = Top & Bottom	
		T.O.W. = Top of Wall	
		VERT. = Vertical	

REV NO.	DATE	SENT FOR	REV NO.	DATE	SENT FOR
2	4.14.15	REVISED PER COMMENTS			
1	4.8.15	REVISED PER COMMENTS			
0	3.13.15	APPROVAL			

HARMAC REBAR AND STEEL CORPORATION

Harmac

A Division of A.H. Harris & Sons, Inc.
 Formerly NeoFarnale Steel

P.O. Box 142
 Cornish Road
 Fryeburg, ME 04037
 Tel. 207-294-4702
 Fax 207-936-3059

301 Hertle Street
 Sayreville, NJ 03301

VT ROUTE 114 BRIDGE #13
 RETAINING WALL PLAN
BURKE, VT

CUSTOMER: T BUCK
 DESIGNER: CLD CONSULTING ENGINEERS

DRAWN BY	DATE	JOB NO.	SHEET NO.
T&P	3.13.15	M915J118	R-1