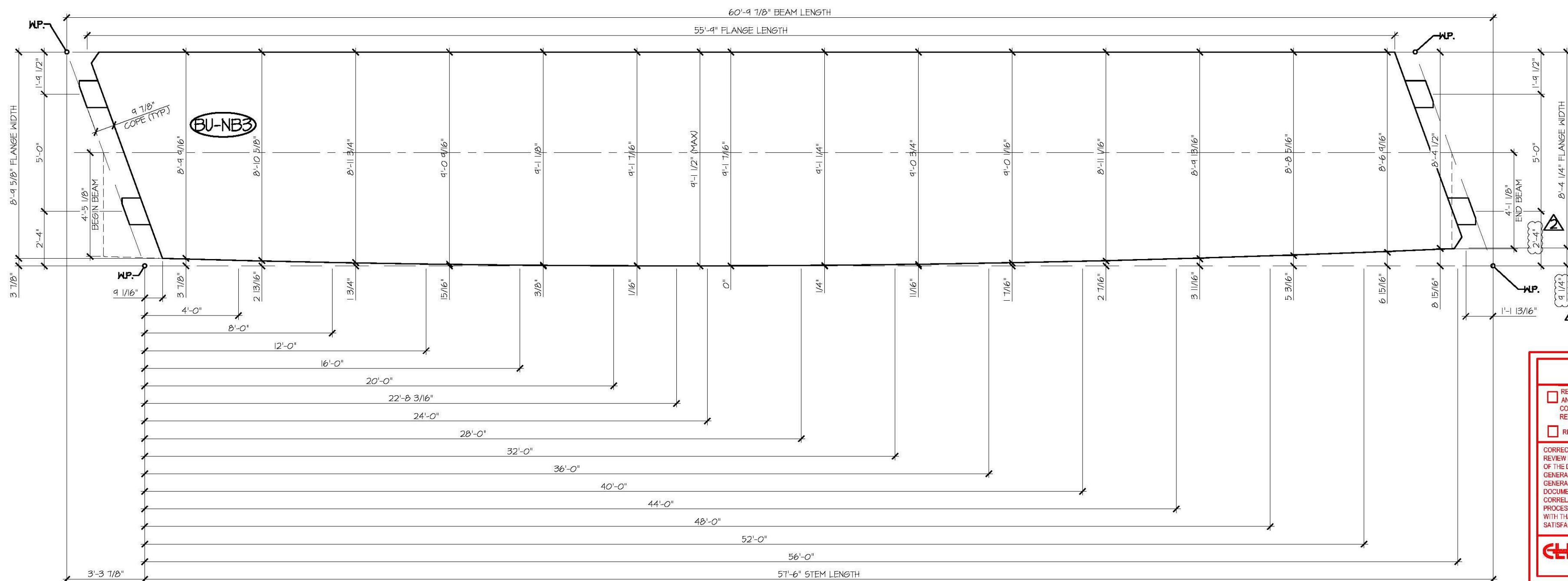


REINFORCING PLAN VIEW IN FORM
 NB33B 3/8" = 1'-0"
 SEE SHEET NB33 FOR STEM REINFORCING AT BEAM ENDS
 SEE SHEET NB33 FOR FLANGE & TEXAS RAIL REINFORCING AT BEAM END



2 CURVED FLANGE LAYOUT
 NB33B 3/8" = 1'-0"

Vermont Agency of Transportation
RECEIVED
 ON 04/06/2015
 APR 06 2015
 Approved As Noted
 Resubmit No. _____
 Date 04/10/2015

SHOP DRAWING REVIEW

REVIEWED AS REQUIRED BY THE CONSTRUCTION CONTRACT DOCUMENTS AND APPROVED, BUT ONLY FOR CONFORMANCE TO THE DESIGN CONCEPT OF THE WORK, AND SUBJECT TO FURTHER MUTATIONS AND REQUIREMENTS CONTAINED IN THE CONSTRUCTION CONTRACT DOCUMENTS.

REJECTED REVISE AND RESUBMIT APPROVED AS NOTED

CORRECTIONS OR COMMENTS MADE ON THE SHOP DRAWINGS DURING THIS REVIEW DO NOT RELIEVE CONTRACTOR FROM COMPLIANCE WITH REQUIREMENTS OF THE DRAWINGS AND SPECIFICATIONS. THIS CHECK IS ONLY FOR REVIEW OF GENERAL CONFORMANCE WITH THE DESIGN CONCEPT OF THE PROJECT AND GENERAL COMPLIANCE WITH THE INFORMATION GIVEN IN THE CONTRACT DOCUMENTS. THE CONTRACTOR IS RESPONSIBLE FOR CONFIRMING AND CONSULTING ALL QUANTITIES AND DIMENSIONS, SELECTING APPROPRIATE PROCESSES AND TECHNIQUES OF CONSTRUCTION, COORDINATING THEIR WORK WITH THAT OF ALL OTHER TRADES AND PERFORMING THEIR WORK IN A SAFE AND SATISFACTORY MANNER.

CDI Consulting Engineers
 240 Commercial Street
 Montpelier, VT 05602
 802-888-9222

Job Number: 120121
 Reviewed by: SRB
 Date: 04/10/2015

APPROVAL STAMP:	J.P. CARRARA & SONS INC. Precast & Prestress Manufacturer 244 DREW ST., MIDDLEBURY, VERMONT 05753 Phone: (802)388-6361 Fax: (802)388-9010	T. BUCK CONSTRUCTION, INC. CONTRACTOR AUBURN, MAINE
STATE OF VERMONT AGENCY OF TRANSPORTATION COUNTY OF CALEDONIA	DATE: MAR. 26, 2015	SCALE: NOTED
TOWN OF BURKE VERMONT ROUTE 114 BRIDGE NO.: 13 PROJECT NO.: BRF 0269(13)	CHKD: DFTM: JJK	JOB NO: 23454-015
PRESTRESSED NEXT BEAM DETAILS	DWG. NO: NB33B	