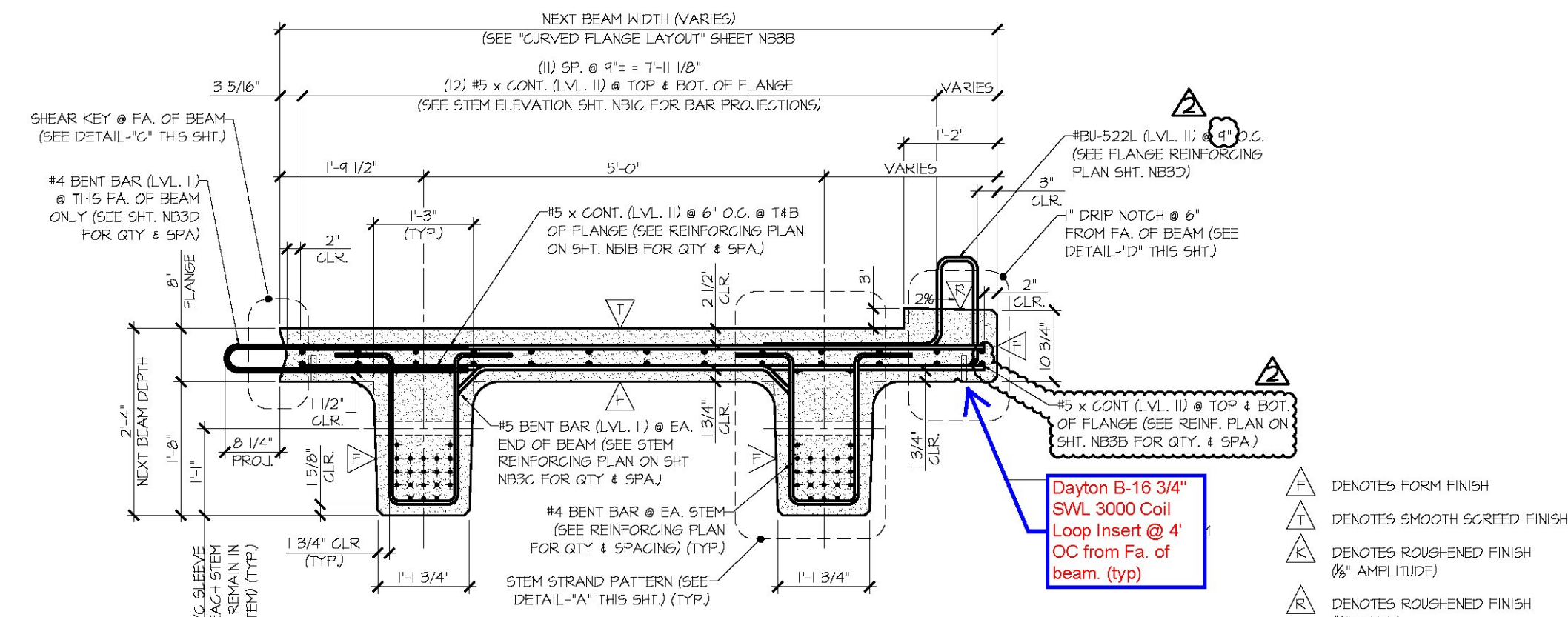


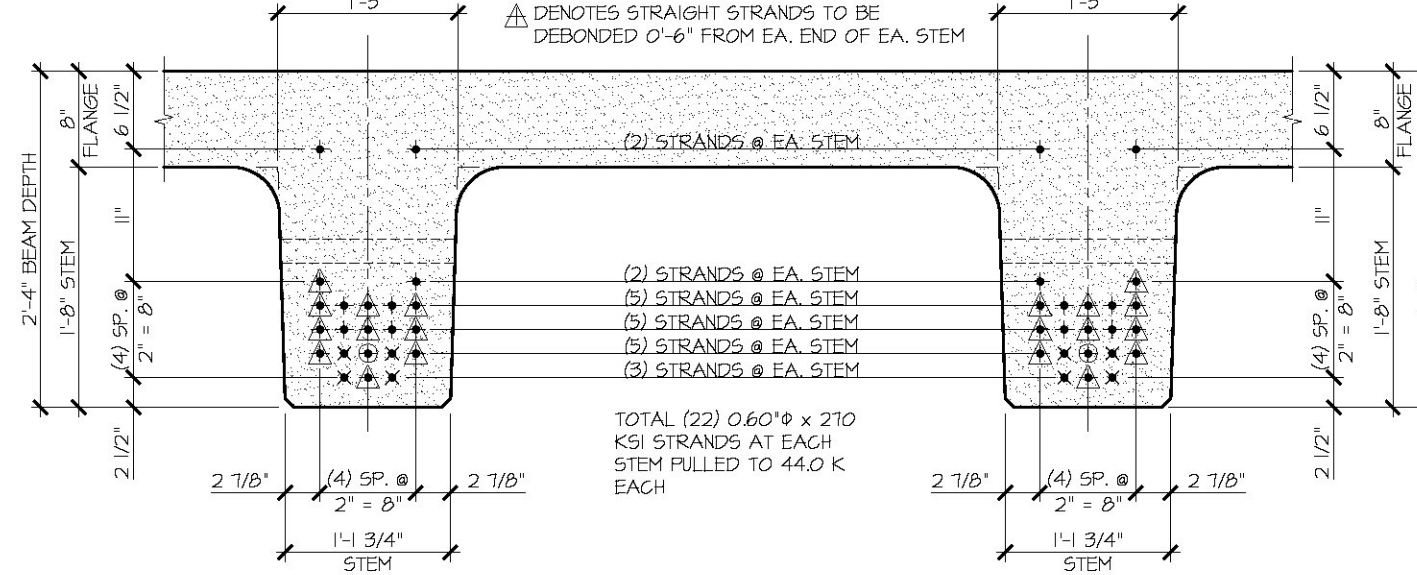
1
NB3A
DIMENSIONAL PLAN VIEW IN FORM
3/8" = 1'-0"



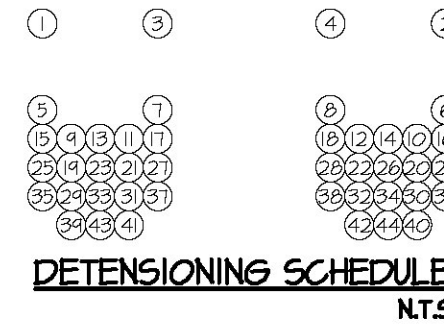
A
NB3A
DIMENSIONAL & REINFORCING SECTION
3/8" = 1'-0"

PRESTRESSING NOTATIONS

- + DENOTES STRAIGHT STRAND TO BE CUT FLUSH WITH EA. END OF EA. STEM
- X DENOTES STRAIGHT STRAND TO EXTEND 2'-0" FROM EA. END OF EA. STEM
- ⊕ DENOTES STRAIGHT STRANDS TO BE DEBONDED 2'-0" FROM EA. END OF EA. STEM
- ⊖ DENOTES STRAIGHT STRANDS TO BE DEBONDED 0'-6" FROM EA. END OF EA. STEM



DETAIL - "A" (STEM STRAND PATTERN)
1" = 1'-0"



Vermont Agency of Transportation
RECEIVED
 OK'D BY Rob Young
 May 1, 2015
 RESUBMIT No Approved
 BY Rob Young DATE 05/04/2015

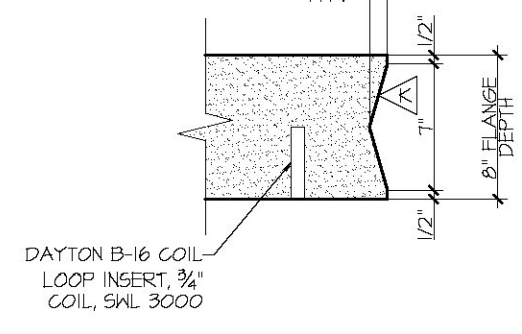
MARK: BU-NB3	QTY: 1	WT: 43.11 T	VOL: 21.29 CY
--------------	--------	-------------	---------------

APPROVAL STAMP:

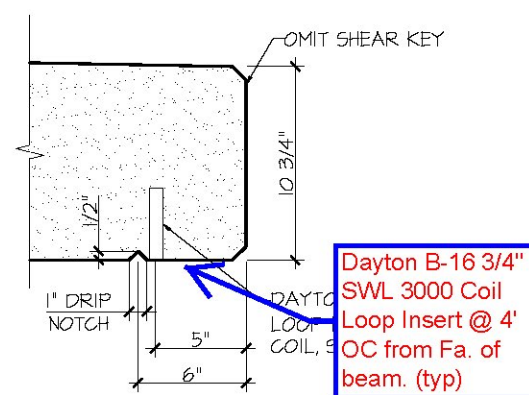
J.P. CARRARA & SONS INC. Precast & Prestress Manufacturer <small>244 CHEE ST., WINDSOR, VERMONT 05353 Phone: (802)388-6361 Fax: (802)388-9010</small>	T. BUCK CONSTRUCTION, INC. CONTRACTOR AUBURN, MAINE	
	STATE OF VERMONT AGENCY OF TRANSPORTATION COUNTY OF CALEDONIA TOWN OF BURKE VERMONT ROUTE 114 BRIDGE NO.: 13 PROJECT NO.: BRP 0269(13)	DATE: MAR. 26, 2015 SCALE: NOTED CHD: DFTM: JOK JOB NO: 23454-015
PRESTRESSED NEXT BEAM DETAILS		DWG. NO: NB3A

HOMASOTE BOARD IMPREGNATED WITH ASPHALT (OR EQ.) FULL WIDTH OF BEAM STEM, FASTENED TO BEAM STEM (TYP @ EA. END OF EA. BEAM)

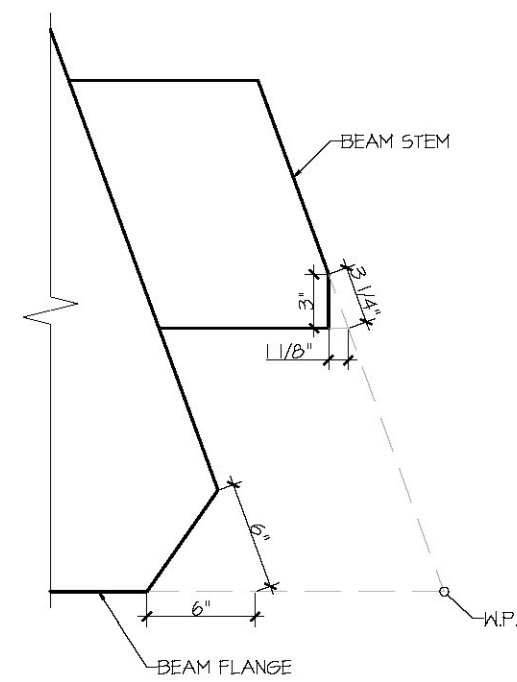
DETAIL - "B"
3" = 1'-0"



DETAIL - "C"
1 1/2" = 1'-0"



DETAIL - "D"
1 1/2" = 1'-0"



DETAIL - "E"
1 1/2" = 1'-0"