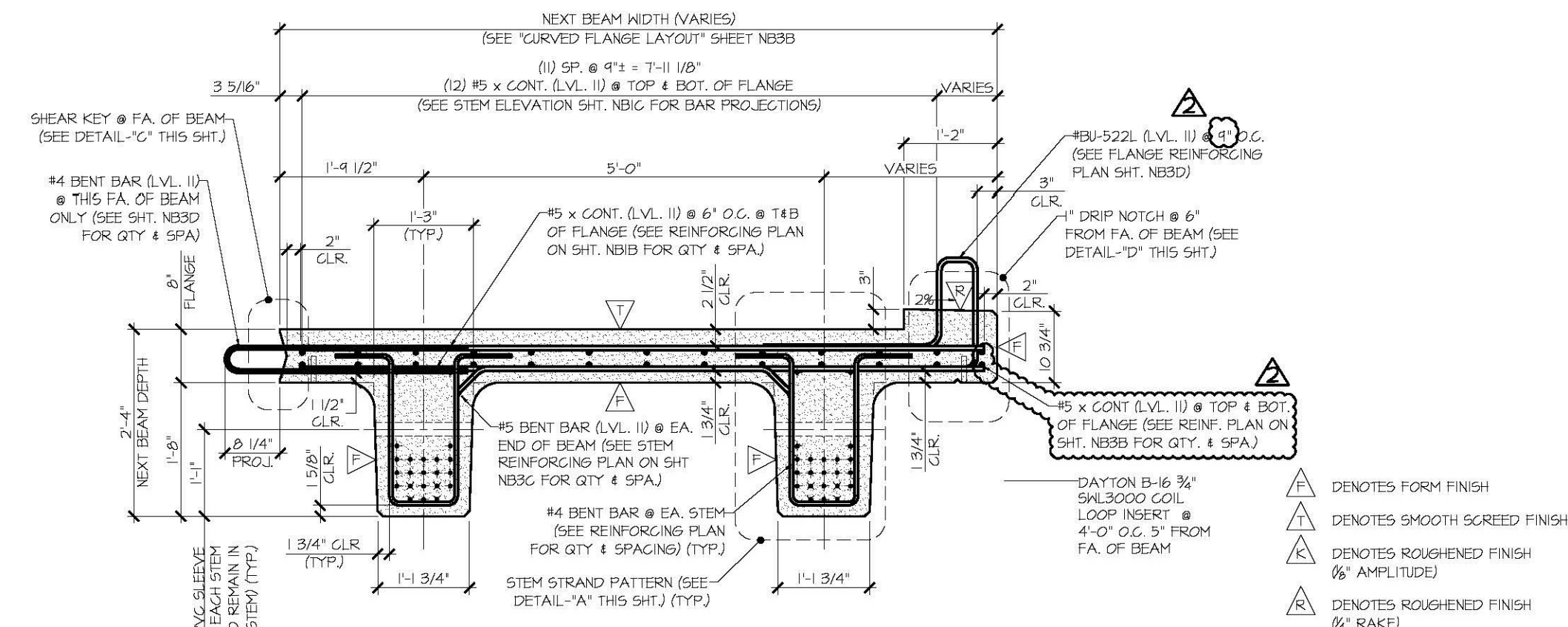


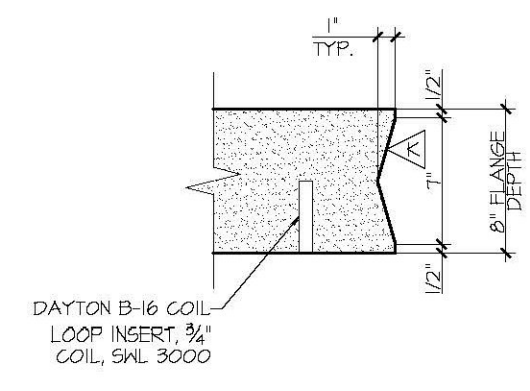
**1 NB3A**  
**DIMENSIONAL PLAN VIEW IN FORM**  
 3/8" = 1'-0"



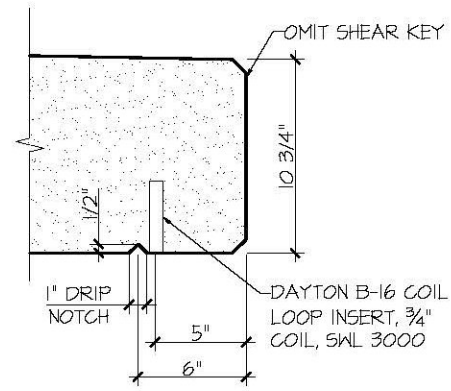
**A NB3A**  
**DIMENSIONAL & REINFORCING SECTION**  
 3/8" = 1'-0"

HOMASOTE BOARD IMPREGNATED WITH ASPHALT (OR EQ.) FULL WIDTH OF BEAM STEM. FASTENED TO BEAM STEM (TYP) @ EA. END OF EA. BEAM

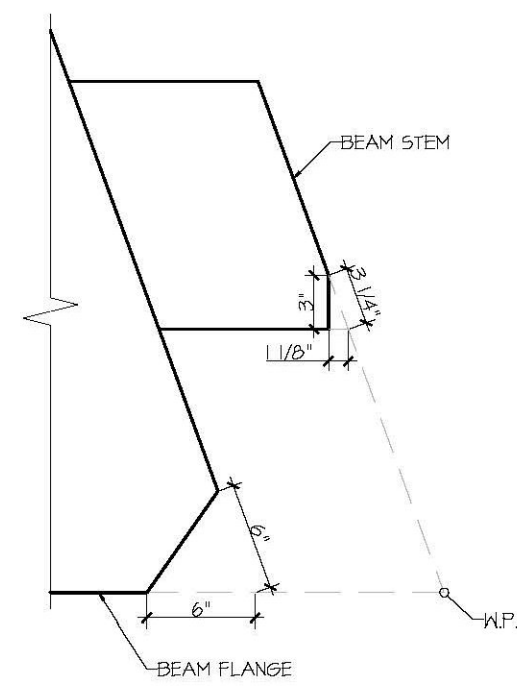
**DETAIL - "B"**  
 3" = 1'-0"



**DETAIL - "C"**  
 1 1/2" = 1'-0"



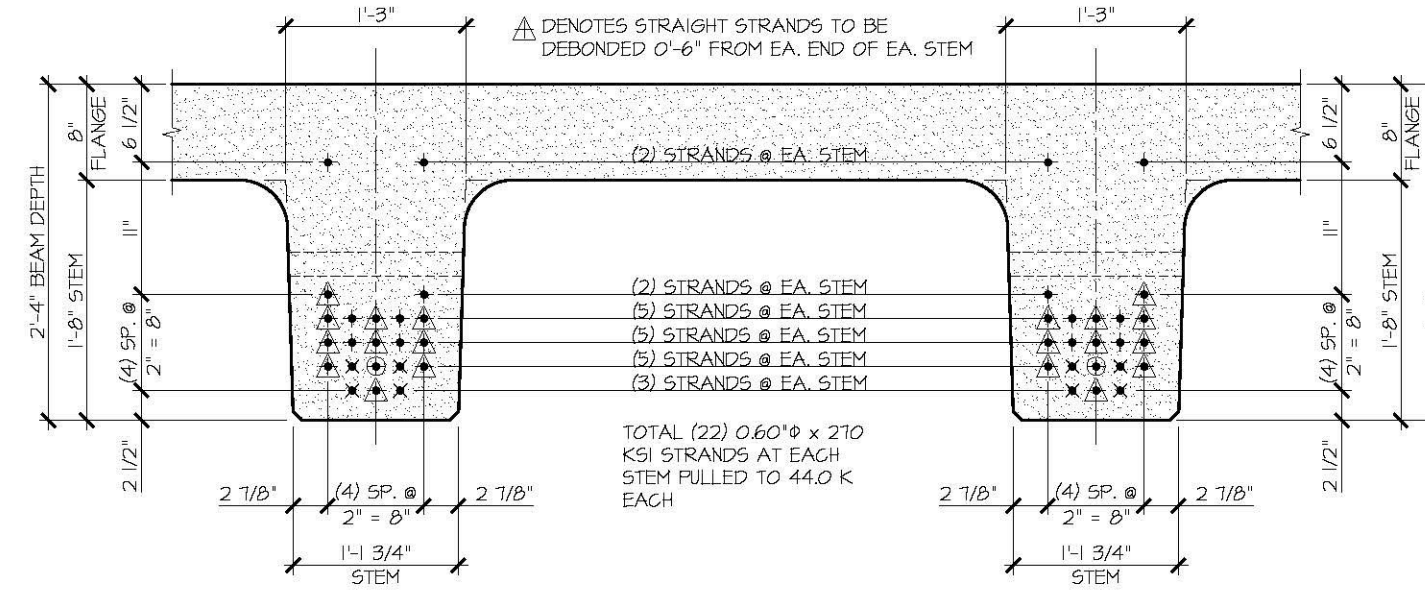
**DETAIL - "D"**  
 1 1/2" = 1'-0"



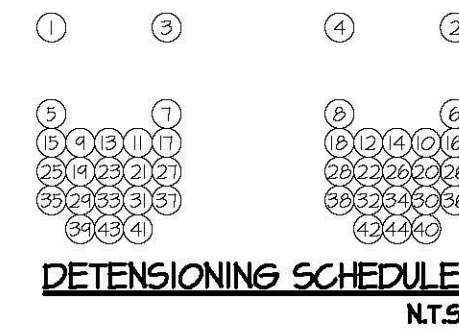
**DETAIL - "E"**  
 1 1/2" = 1'-0"

**PRESTRESSING NOTATIONS**

- + DENOTES STRAIGHT STRAND TO BE CUT FLUSH WITH EA. END OF EA. STEM
- X DENOTES STRAIGHT STRAND TO EXTEND 2'-0" FROM EA. END OF EA. STEM
- ⊖ DENOTES STRAIGHT STRANDS TO BE DEBONDED 2'-0" FROM EA. END OF EA. STEM
- ⊕ DENOTES STRAIGHT STRANDS TO BE DEBONDED 0'-6" FROM EA. END OF EA. STEM



**DETAIL - "A" (STEM STRAND PATTERN)**  
 1" = 1'-0"



**DENSIFYING SCHEDULE**  
 N.T.S.

**SHOP DRAWING REVIEW**

REVIEWED AS REQUIRED BY THE CONSTRUCTION CONTRACT DOCUMENTS AND APPROVED, BUT ONLY FOR CONFORMANCE TO THE DESIGN CONCEPT OF THE WORK, AND SUBJECT TO FURTHER LIMITATIONS AND REQUIREMENTS CONTAINED IN THE CONSTRUCTION CONTRACT DOCUMENTS.

REJECTED  REVISE AND RESUBMIT  APPROVED AS NOTED

CONNECTIONS OR COMMENTS MADE ON THE SHOP DRAWINGS DURING THIS REVIEW DO NOT RELIEVE CONTRACTOR FROM COMPLIANCE WITH REQUIREMENTS OF THE DRAWINGS AND SPECIFICATIONS. THIS CHECK IS ONLY FOR REVIEW OF GENERAL CONFORMANCE WITH THE DESIGN CONCEPT OF THE PROJECT AND GENERAL COMPLIANCE WITH THE INFORMATION GIVEN IN THE CONTRACT DOCUMENTS. THE CONTRACTOR IS RESPONSIBLE FOR CONFIRMING AND CORRELATING ALL QUANTITIES AND DIMENSIONS, SELECTING FABRICATION PROCESS AND TECHNIQUES OF CONSTRUCTION, COORDINATING THEIR WORK WITH THAT OF ALL OTHER TRADES AND PERFORMING THEIR WORK IN A SAFE AND SATISFACTORY MANNER.

RECEIVED  
 APRIL 6, 2015  
 APPROVED AND NOTED BY: [Signature]  
 DATE: 04/10/2015

MARK: BU-NB3	QTY: 1	WT: 43.11 T	VOL: 21.29 CY
--------------	--------	-------------	---------------

APPROVAL STAMP:	J.P. CARRARA & SONS INC. Precast & Prestress Manufacturer 244 DEXE ST. WOODBURY, VERMONT 05053 Phone: (802)388-6361 Fax: (802)388-9010	T. BUCK CONSTRUCTION, INC. CONTRACTOR AUBURN, MAINE
STATE OF VERMONT AGENCY OF TRANSPORTATION COUNTY OF CALEDONIA	DATE: MAR. 26, 2015	SCALE: NOTED
TOWN OF BURKE VERMONT ROUTE 114 BRIDGE NO.: 13 PROJECT NO.: BRF 0269(13)	CHKD: DFTM: JOK	JOB NO: 23454-015
PRESTRESSED NEXT BEAM DETAILS	DWG. NO: NB3A	