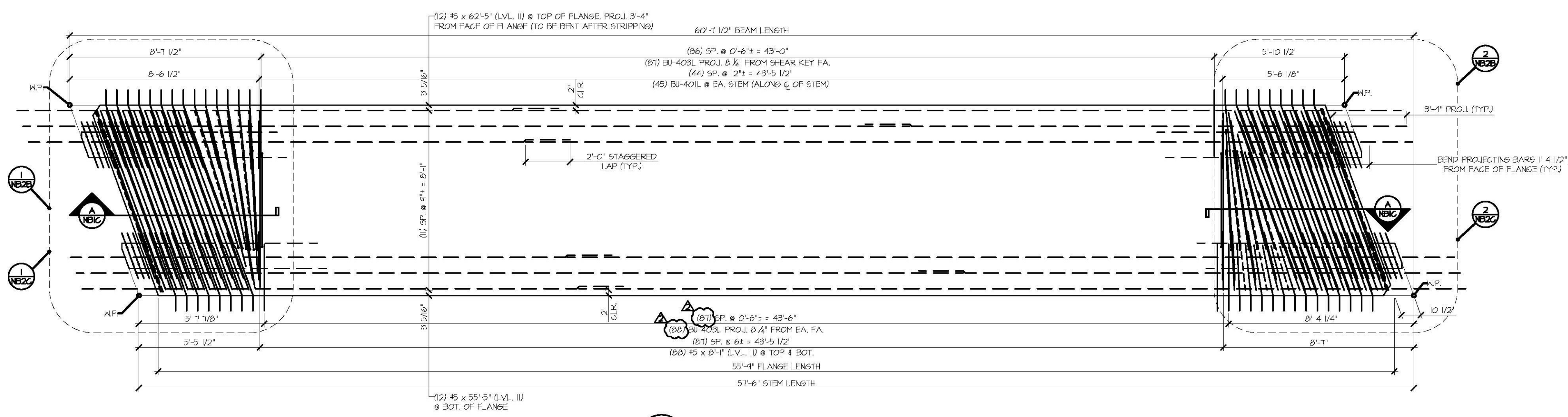


**1 NB2C** FLANGE REINFORCING PLAN VIEW IN FORM  
 1/2" = 1'-0"  
 - LONGITUDINAL REINFORCING NOT SHOWN FOR CLARITY  
 - SEE SHEET NB2B FOR STEM REINFORCING AT BEAM END

**2 NB2C** FLANGE REINFORCING PLAN VIEW IN FORM  
 1/2" = 1'-0"  
 - LONGITUDINAL REINFORCING NOT SHOWN FOR CLARITY  
 - SEE SHEET NB2B FOR STEM REINFORCING AT BEAM END



**3 NB2C** REINFORCING PLAN VIEW IN FORM  
 3/8" = 1'-0"  
 - SEE 5HT, NB2B FOR STEM REINFORCEMENT AT BEAM ENDS  
 - SEE 1/NB2C FOR FLANGE REINFORCEMENT AT BEAM ENDS

| MARK: BU-NB2              | QTY.: 2 | WT: 41.34 T  | VOL: 20.42 CY |
|---------------------------|---------|--|---------------|
| MATERIAL LIST / NEXT BEAM |         |  |               |
| ITEM                      | MARK    | DESCRIPTION  | QTY.          |
| 1                         | BU-40L  | #4 BENT BAR (LEVEL II, DUAL COATED)  | 46            |
| 2                         | BU-40L  | #4 BENT BAR (LEVEL II, DUAL COATED)  | 62            |
| 3                         | BU-40SL | #4 BENT BAR (LEVEL II, DUAL COATED)  | 175           |
| 4                         | BU-40SL | #4 BENT BAR (LEVEL II, DUAL COATED)  | 31            |
| 5                         | BU-40SL | #4 BENT BAR (LEVEL II, DUAL COATED)  | 2             |
| 6                         | BU-40SL | #4 BENT BAR (LEVEL II, DUAL COATED)  | 2             |
| 7                         | BU-40L  | #4 BENT BAR (LEVEL II, DUAL COATED)  | 2             |
| 8                         | BU-40SL | #4 BENT BAR (LEVEL II, DUAL COATED)  | 2             |
| 9                         | BU-40L  | #4 BENT BAR (LEVEL II, DUAL COATED)  | 3             |
| 10                        | BU-40L  | #4 BENT BAR (LEVEL II, DUAL COATED)  | 2             |
| 11                        |         | #4 x 8'-4" (LEVEL II, DUAL COATED)   | 4             |
| 12                        |         | #4 x 8'-7" (LEVEL II, DUAL COATED)   | 16            |
| 13                        | BU-50L  | #5 BENT BAR (LEVEL II, DUAL COATED)  | 16            |
| 14                        | BU-50L  | #5 BENT BAR (LEVEL II, DUAL COATED)  | 22            |
| 15                        | BU-50SL | #5 BENT BAR (LEVEL II, DUAL COATED)  | 30            |
| 16                        |         | #5 x 4'-8" (LEVEL II, DUAL COATED)   | 12            |
| 17                        |         | #5 x 7'-3" (LEVEL II, DUAL COATED)   | 12            |
| 18                        |         | #5 x 8'-1" (LEVEL II, DUAL COATED)   | 16            |
| 19                        |         | #5 x 8'-4" (LEVEL II, DUAL COATED)   | 4             |
| 20                        |         | #5 x 8'-7" (LEVEL II, DUAL COATED)   | 32            |
| 21                        |         | #5 x 55'-5" (40'-0" + 17'-5" W/ (1) 2'-0" STAGGERED LAP) (LEVEL II, DUAL COATED) | 12            |
| 22                        |         | #5 x 62'-5" (40'-0" + 24'-5" W/ (1) 2'-0" STAGGERED LAP) (LEVEL II, DUAL COATED) | 12            |
| 23                        |         | SET OF (4) 0.50"Ø x 210 KSI STRAND LIFTING LOOPS                                 | 4             |
| 24                        |         | DAYTON B-16 COIL LOOP INERTS, 3/4" COIL, SML 3000                                | 28            |

Vermont Agency of Transportation  
**RECEIVED**  
 OK'D BY: April 6, 2015  
 RESUBMIT No. Approved As Noted  
 BY: [Signature] DATE: 04/06/2015

SHOP DRAWING REVIEW

REVIEWED AS REQUIRED BY THE CONSTRUCTION CONTRACT DOCUMENTS AND APPROVED, BUT ONLY FOR CONFORMANCE TO THE DESIGN CONSISTENCY OF THE WORK, AND SUBJECT TO THE LIMITATIONS AND REQUIREMENTS CONTAINED IN THE CONSTRUCTION CONTRACT DOCUMENTS.  
 REJECTED     REVISE AND RESUBMIT     APPROVED AS NOTED

CORRECTIONS OR COMMENTS MADE ON THE SHOP DRAWINGS DURING THIS REVIEW DO NOT RELIEVE CONTRACTOR FROM COMPLIANCE WITH REQUIREMENTS OF THE DRAWINGS AND SPECIFICATIONS. THIS CHECK IS ONLY FOR REVIEW OF GENERAL CONFORMANCE WITH THE DESIGN CONCEPT OF THE PROJECT AND GENERAL COMPLIANCE WITH THE INFORMATION GIVEN IN THE CONTRACT DOCUMENTS. THE CONTRACTOR IS RESPONSIBLE FOR CONFIRMING AND CORRELATING ALL QUANTITIES AND DIMENSIONS, SELECTING FABRICATION PROCESSES AND TECHNIQUES OF CONSTRUCTION, COORDINATING THEIR WORK WITH THAT OF ALL OTHER TRADES, AND PERFORMING THEIR WORK IN A SAFE AND SATISFACTORY MANNER.

CLD 0.2 Consulting Engineers and Commercial Design    Job Number: 120421  
 103-688-8228    103-688-8228    103-688-8228    103-688-8228    103-688-8228    103-688-8228  
 Date: 04/10/2015

|  |  |   |
|--|--|---|
| APPROVAL STAMP:  | J.P. CARRARA & SONS INC.<br>Precast & Prestress Manufacturer<br>244 DREW ST. WOODBURY, VERMONT 05053 Phone: (802)388-6361 Fax: (802)388-9010 | T. BUCK CONSTRUCTION, INC.<br>CONTRACTOR<br>AUBURN, MAINE |
| STATE OF VERMONT AGENCY OF TRANSPORTATION<br>COUNTY OF CALEDONIA               | DATE: MAR. 26, 2015  | SCALE: NOTED  |
| TOWN OF BURKE<br>VERMONT ROUTE 114<br>BRIDGE NO.: 13 PROJECT NO.: BRP 0269(13) | CHKD: DFTM: JJK  | JOB NO: 23454-015   |
| PRESTRESSED NEXT BEAM DETAILS  | DWG. NO: NB2C  |   |