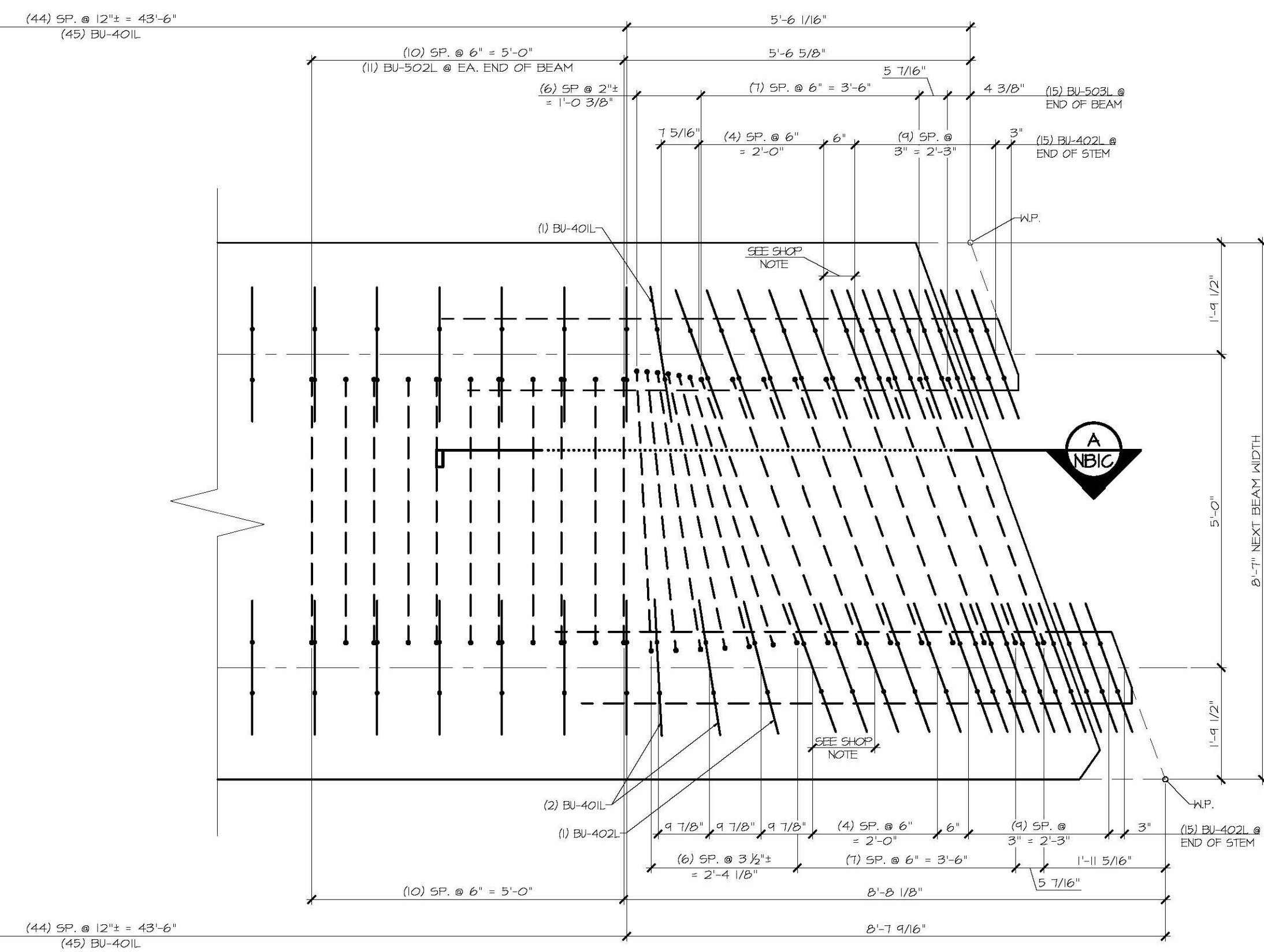


1 STEM REINFORCING PLAN VIEW IN FORM
NB2B $\frac{3}{4}'' = 1'-0''$

- LONGITUDINAL REINFORCING NOT SHOWN FOR CLARITY
- STIRRUP SPACINGS TO BE ADJUSTED TO ALLOW FOR 2" PVC SLEEVE
- SEE SHEET NB2C FOR REINFORCING PLAN
- SEE SHEET NB2C FOR FLANGE REINFORCING AT BEAM END

SHOP NOTE
- STIRRUP SPACINGS TO BE ADJUSTED TO ALLOW FOR 2" PVC SLEEVE



2 STEM REINFORCING PLAN VIEW IN FORM
NB2B $\frac{3}{4}'' = 1'-0''$

- LONGITUDINAL REINFORCING NOT SHOWN FOR CLARITY
- STIRRUP SPACINGS TO BE ADJUSTED TO ALLOW FOR 2" PVC SLEEVE
- SEE SHEET NB2C FOR REINFORCING PLAN
- SEE SHEET NB2C FOR FLANGE REINFORCING AT BEAM END

CR'D BY: [Signature]
RESUBMIT No. [Blank]
DATE: 04/20/2015

APR 6 2015
Approved/Noted
BY: Rob Young

SHOP DRAWING REVIEW

REVIEWED AS REQUIRED BY THE CONSTRUCTION CONTRACT DOCUMENTS AND APPROVED BUT ONLY FOR CONFORMANCE TO THE DESIGN CONCEPT OF THE WORK, AND SUBJECT TO FURTHER LIMITATIONS AND REQUIREMENTS CONTAINED IN THE CONSTRUCTION CONTRACT DOCUMENTS.

REJECTED REVISE AND RESUBMIT APPROVED AS NOTED

CORRECTIONS OR COMMENTS MADE ON THE SHOP DRAWINGS DURING THIS REVIEW DO NOT RELIEVE CONTRACTOR FROM COMPLIANCE WITH REQUIREMENTS OF THE DRAWINGS AND SPECIFICATIONS. THIS CHECK IS ONLY FOR REVIEW OF GENERAL COMPLIANCE WITH THE DESIGN CONCEPT OF THE PROJECT AND GENERAL COMPLIANCE WITH THE INFORMATION GIVEN IN THE CONTRACT DOCUMENTS. THE CONTRACTOR IS RESPONSIBLE FOR CONFIRMING AND CORRELATING ALL QUANTITIES AND DIMENSIONS, SELECTING FABRICATION PROCESSES AND TECHNIQUES OF CONSTRUCTION, COORDINATING THEIR WORK WITH THAT OF ALL OTHER TRADES, AND PERFORMING THEIR WORK IN A SAFE AND SATISFACTORY MANNER.

SRB Consulting Engineers
661 Commercial Street
Montpelier, VT 05602
802-888-9222

Job Number: 120121
Reviewed by: SRB
Date: 04/10/2015

APPROVAL STAMP:	J.P. CARRARA & SONS INC. Precast & Prestress Manufacturer 244 DEX ST. WOODBURY, VERMONT 05053 Phone: (802) 388-6361 Fax: (802) 388-9010	T. BUCK CONSTRUCTION, INC. CONTRACTOR AUBURN, MAINE
	STATE OF VERMONT AGENCY OF TRANSPORTATION COUNTY OF CALEDONIA	DATE: MAR. 26, 2015 SCALE: NOTED
	TOWN OF BURKE VERMONT ROUTE 114 BRIDGE NO.: 13 PROJECT NO.: BRF 0269(13)	CHKD: [Blank] DFTM: JOK JOB NO: 23454-015
	PRESTRESSED NEXT BEAM DETAILS	DWG. NO: NB2B