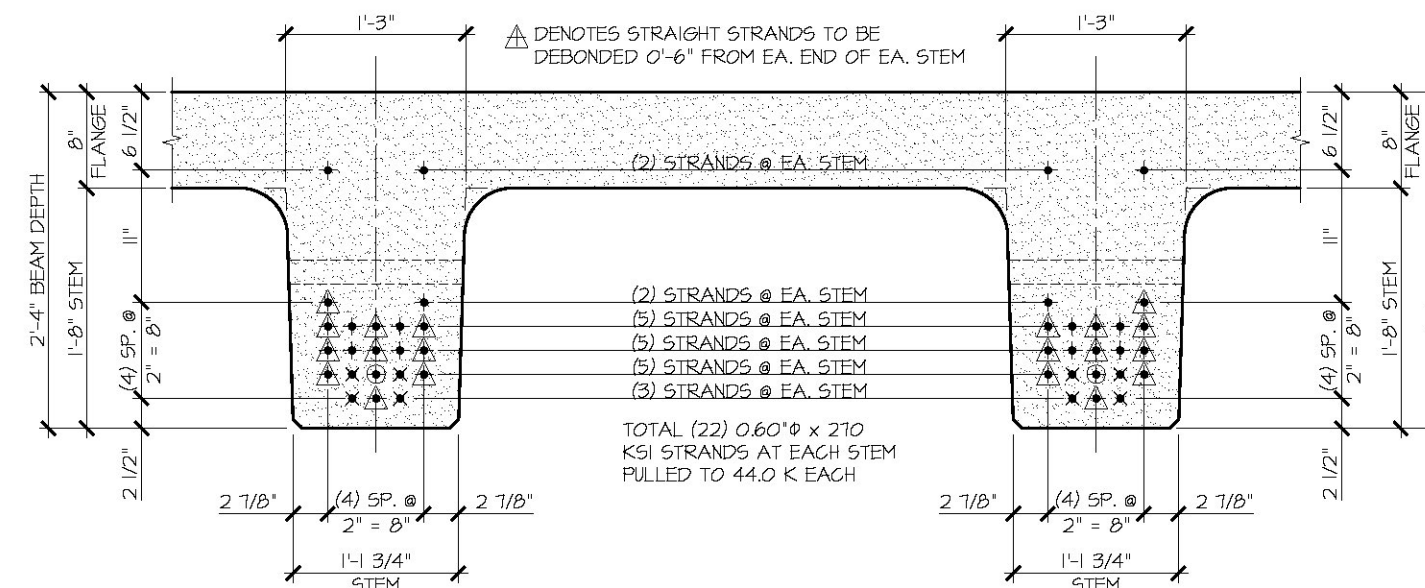


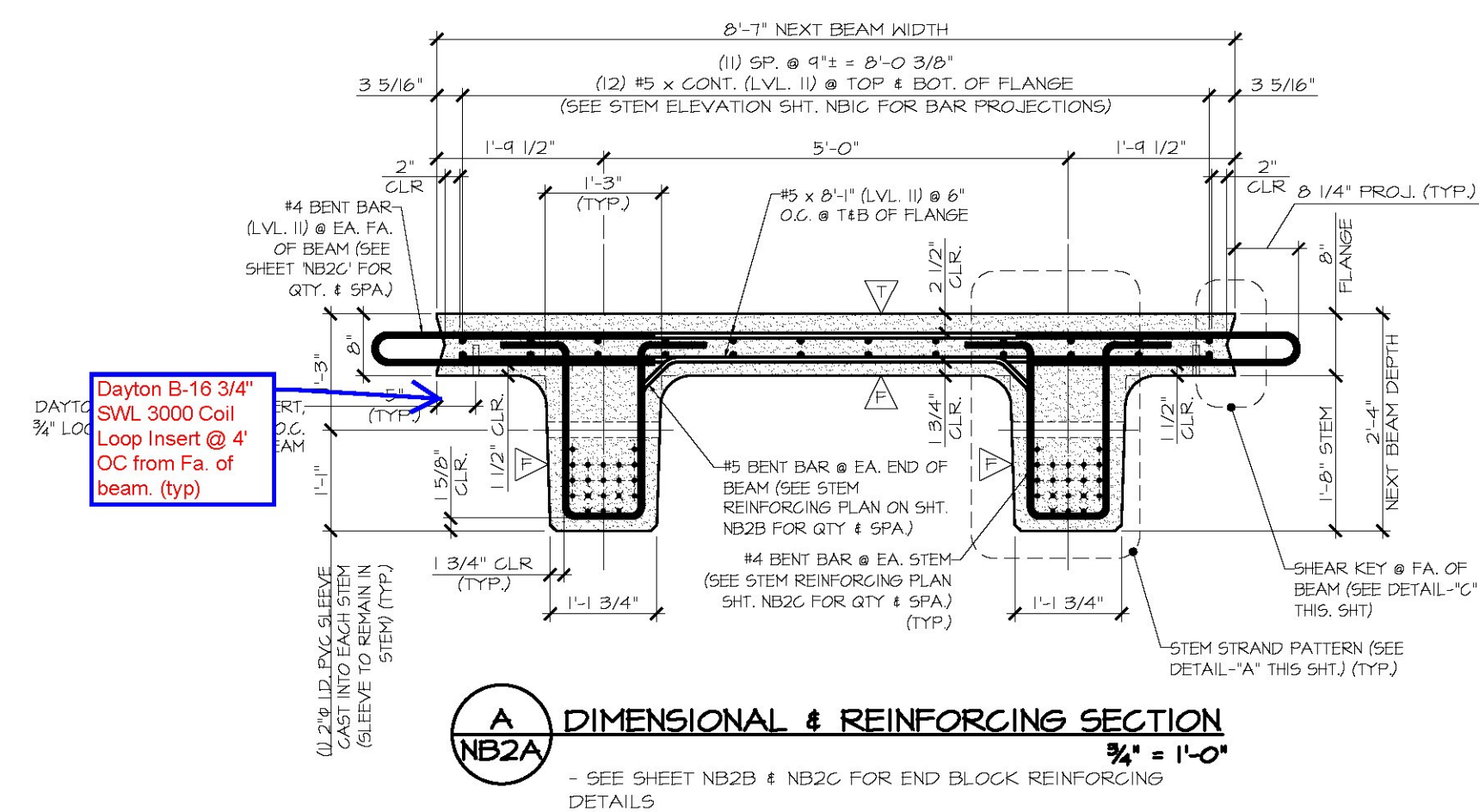
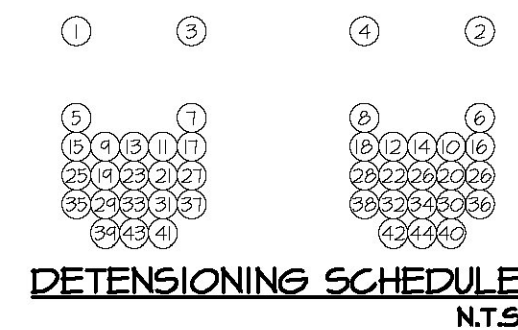
I DIMENSIONAL PLAN VIEW IN FORM
 NB2A 3/8" = 1'-0"

PRESTRESSING NOTATIONS

- + DENOTES STRAIGHT STRAND TO BE CUT FLUSH WITH EA. END OF EA. STEM
- X DENOTES STRAIGHT STRAND TO EXTEND 2'-0" FROM EA. END OF EA. STEM
- ⊕ DENOTES STRAIGHT STRANDS TO BE DEBONDED 2'-0" FROM EA. END OF EA. STEM
- △ DENOTES STRAIGHT STRANDS TO BE DEBONDED 0'-6" FROM EA. END OF EA. STEM



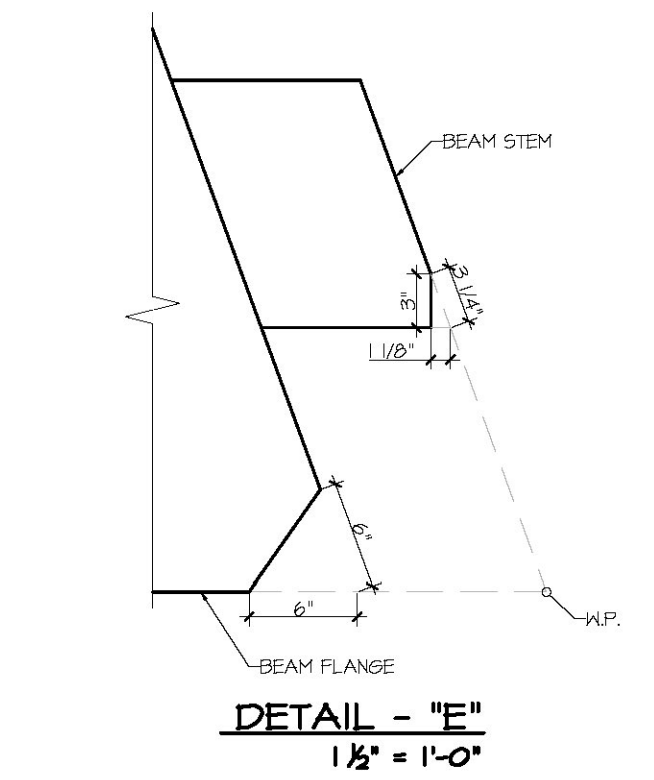
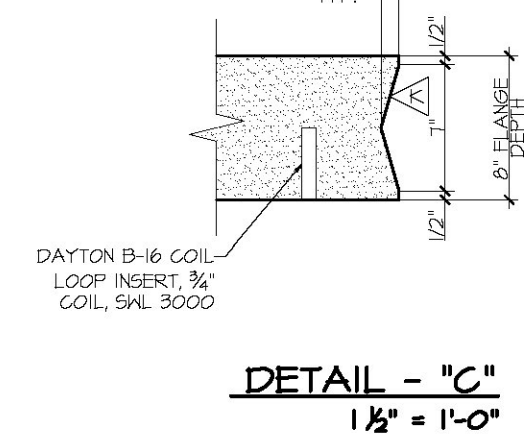
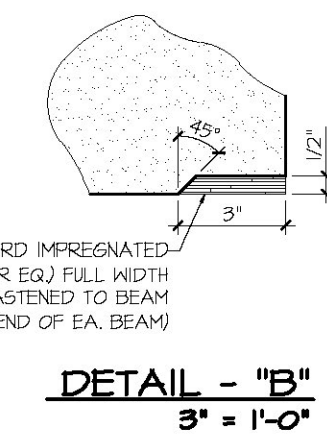
DETAIL - "A" (STEM STRAND PATTERN)
 1" = 1'-0"



A DIMENSIONAL & REINFORCING SECTION
 NB2A 3/8" = 1'-0"
 - SEE SHEET NB2B & NB2C FOR END BLOCK REINFORCING DETAILS

Vermont Agency of Transportation
RECEIVED
 CK'D BY: [Signature]
 OK'D BY: Rob Young
 May 1, 2015
 RESUBMIT No. Approved
 BY Rob Young DATE 05/04/2015

MARK: BU-NB2	QTY: 2	WT: 41.34 T	VOL: 20.42 CY
--------------	--------	-------------	---------------



APPROVAL STAMP:	J.P. CARRARA & SONS INC. Precast & Prestress Manufacturer 244 CHEE ST. WOODBURY, VERMONT 0553 Phone: (802)388-6361 Fax: (802)388-9010	T. BUCK CONSTRUCTION, INC. CONTRACTOR AUBURN, MAINE
STATE OF VERMONT AGENCY OF TRANSPORTATION COUNTY OF CALEDONIA	DATE: MAR. 26, 2015 SCALE: NOTED	CHKD: DFTM: JDK
TOWN OF BURKE VERMONT ROUTE 114 BRIDGE NO.: 13 PROJECT NO.: BRF 0269(13)	JOB NO.: 23454-015	DWG. NO: NB2A
PRESTRESSED NEXT BEAM DETAILS		