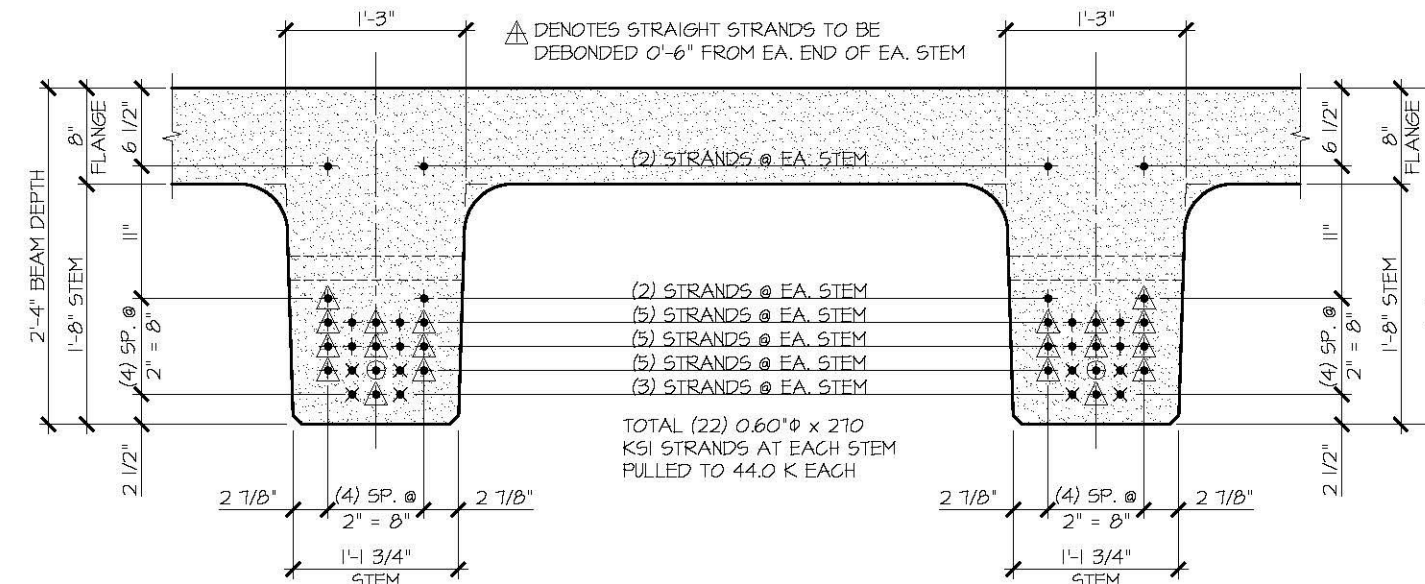


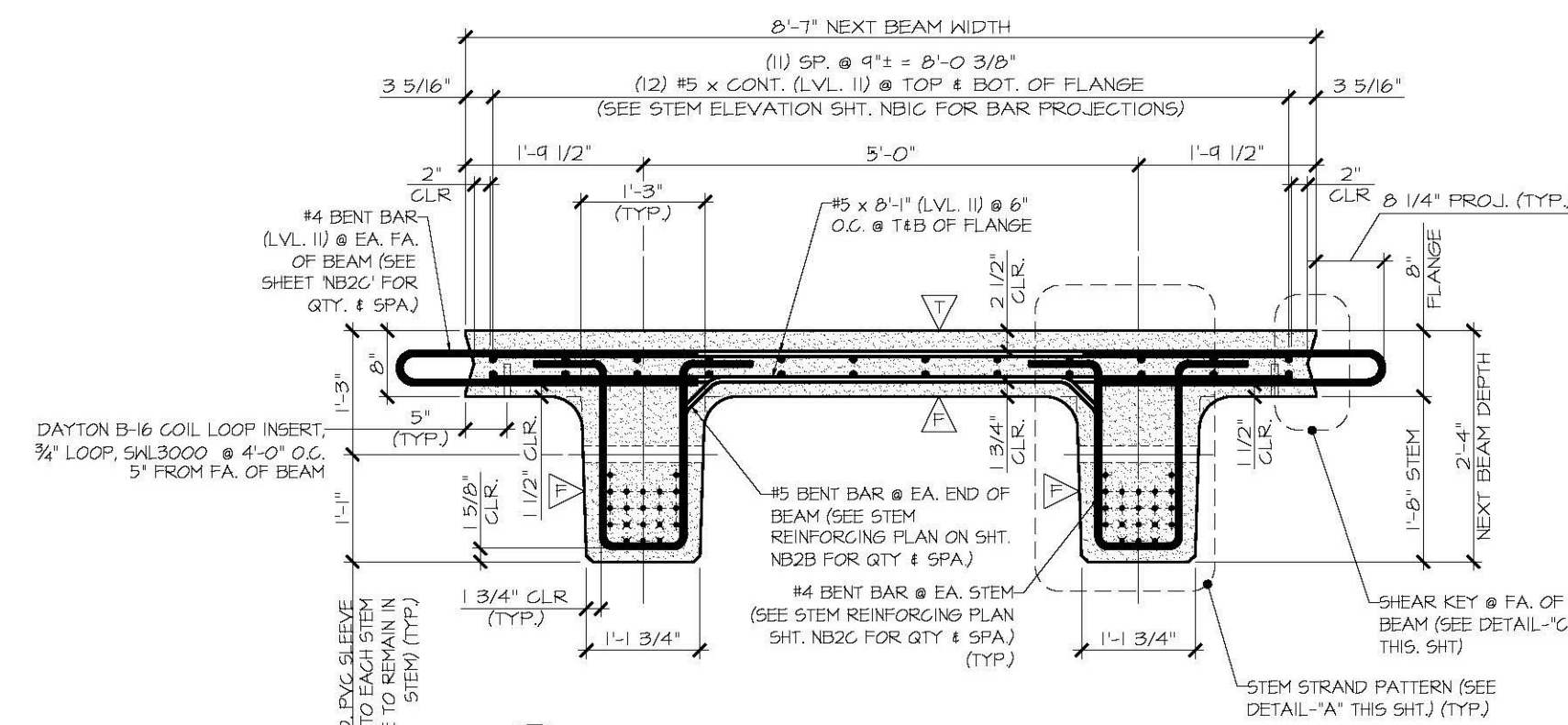
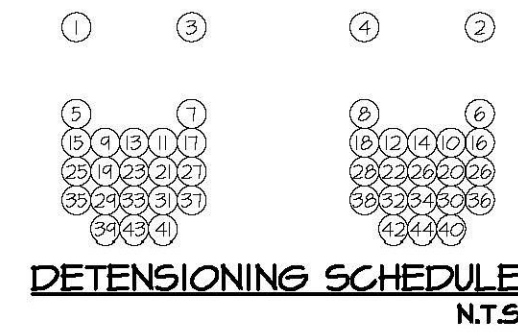
1 DIMENSIONAL PLAN VIEW IN FORM
NB2A 3/8" = 1'-0"

PRESTRESSING NOTATIONS

- + DENOTES STRAIGHT STRAND TO BE CUT FLUSH WITH EA. END OF EA. STEM
- X DENOTES STRAIGHT STRAND TO EXTEND 2'-0" FROM EA. END OF EA. STEM
- ⊕ DENOTES STRAIGHT STRANDS TO BE DEBONDED 2'-0" FROM EA. END OF EA. STEM
- △ DENOTES STRAIGHT STRANDS TO BE DEBONDED 0'-6" FROM EA. END OF EA. STEM



DETAIL - "A" (STEM STRAND PATTERN)
1" = 1'-0"



A DIMENSIONAL & REINFORCING SECTION
NB2A 3/8" = 1'-0"

- △ DENOTES FORM FINISH
- △ DENOTES SMOOTH SCREED FINISH
- △ DENOTES ROUGHENED FINISH (1/8" AMPLITUDE)
- △ DENOTES ROUGHENED FINISH (1/4" RAKE)

SHOP DRAWING REVIEW

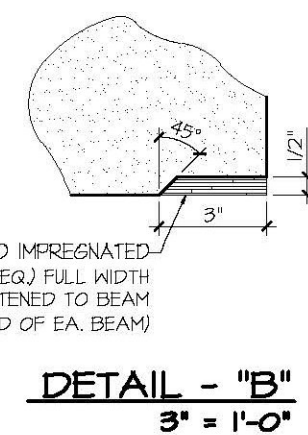
REVIEWED AS REQUIRED BY THE CONSTRUCTION CONTRACT DOCUMENTS AND APPROVED BUT ONLY FOR CONFORMANCE TO THE DESIGN CONCEPT OF THE WORK, AND SUBJECT TO FURTHER LIMITATIONS AND REQUIREMENTS CONTAINED IN THE CONSTRUCTION CONTRACT DOCUMENTS.

REJECTED
 REVISE AND RESUBMIT
 APPROVED AS NOTED

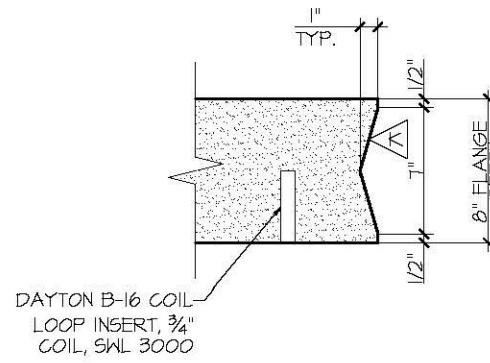
CORRECTIONS OR COMMENTS MADE ON THE SHOP DRAWINGS DURING THIS REVIEW DO NOT RELIEVE THE CONTRACTOR FROM COMPLIANCE WITH REQUIREMENTS OF THE DRAWINGS AND SPECIFICATIONS. THIS CHECK IS ONLY FOR REVIEW OF GENERAL CONFORMANCE WITH THE DESIGN CONCEPT OF THE PROJECT AND GENERAL COMPLIANCE WITH THE INFORMATION GIVEN IN THE CONTRACT DOCUMENTS. THE CONTRACTOR IS RESPONSIBLE FOR CONFIRMING AND CORRELATING ALL QUANTITIES AND DIMENSIONS, SELECTING FABRICATION PROCESSES AND TECHNIQUES OF CONSTRUCTION, COORDINATING THEIR WORK WITH THAT OF ALL OTHER TRADES, AND PERFORMING THEIR WORK IN A SAFE AND SATISFACTORY MANNER.

CJD Consulting Engineers
240 Commercial Street
Montpelier, VT 05602
802-888-8222
 Job Number: 120121
Reviewed by: SRE
 Date: 04/10/2015

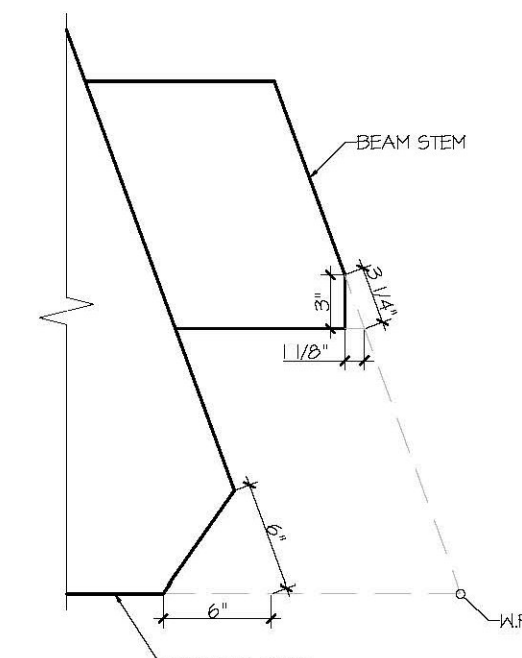
MARK: BU-NB2	QTY: 2	WT: 41.34 T	VOL: 20.42 CY
--------------	--------	-------------	---------------



DETAIL - "B"
3" = 1'-0"



DETAIL - "C"
1 1/2" = 1'-0"



DETAIL - "E"
1 1/2" = 1'-0"

APPROVAL STAMP:	J.P. CARRARA & SONS INC. Precast & Prestress Manufacturer 244 DEXE ST. WOODBURY, VERMONT 05053 Phone: (802)388-6361 Fax: (802)388-9010	T. BUCK CONSTRUCTION, INC. CONTRACTOR AUBURN, MAINE
	STATE OF VERMONT AGENCY OF TRANSPORTATION COUNTY OF CALEDONIA	DATE: MAR. 26, 2015 SCALE: NOTED
	TOWN OF BURKE VERMONT ROUTE 114 BRIDGE NO.: 13 PROJECT NO.: BRF 0269(13)	CHKD: DFTM: JOK JOB NO: 23454-015
	PRESTRESSED NEXT BEAM DETAILS	DWG. NO: NB2A