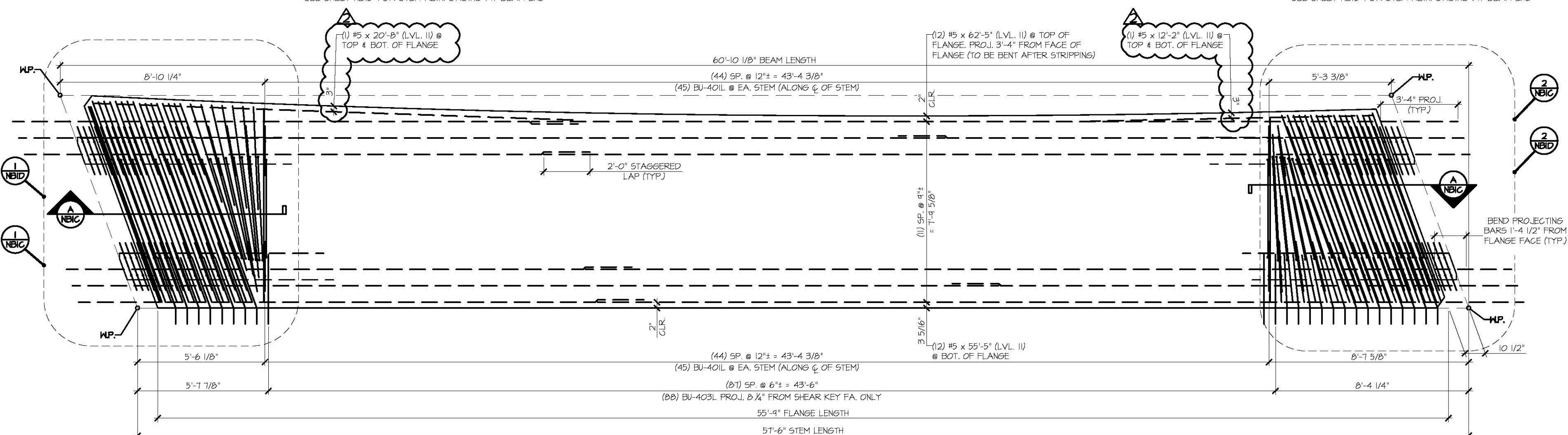


1 FLANGE REINFORCING PLAN VIEW IN FORM



2 FLANGE REINFORCING PLAN VIEW IN FORM



3 REINFORCING PLAN VIEW IN FORM

MARK:	QUANTITY:	WT:	VOL:
BU-NB1		47.52T	23.47CY

ITEM	MARK	DESCRIPTION	QTY.
1	BU-401L	#4 BENT BAR (LEVEL II, DUAL COATED)	96
2	BU-402L	#4 BENT BAR (LEVEL II, DUAL COATED)	62
3	BU-403L	#4 BENT BAR (LEVEL II, DUAL COATED)	68
4	BU-404L	#4 BENT BAR (LEVEL II, DUAL COATED)	15
5	BU-405L	#4 BENT BAR (LEVEL II, DUAL COATED)	1
6	BU-406L	#4 BENT BAR (LEVEL II, DUAL COATED)	1
7	BU-407L	#4 BENT BAR (LEVEL II, DUAL COATED)	1
8	BU-408L	#4 BENT BAR (LEVEL II, DUAL COATED)	1
9	BU-409L	#4 BENT BAR (LEVEL II, DUAL COATED)	1
10	BU-410L	#4 BENT BAR (LEVEL II, DUAL COATED)	1
11		#4 x 8'-4" (LEVEL II, DUAL COATED)	2
12		#4 x 8'-1" (LEVEL II, DUAL COATED)	8
13		#4 x 9'-0" (LEVEL II, DUAL COATED)	2
14		#4 x 9'-2" (LEVEL II, DUAL COATED)	4
15		#4 x 9'-3" (LEVEL II, DUAL COATED)	4
16	BU-501L	#5 BENT BAR (LEVEL II, DUAL COATED)	16
17	BU-502L	#5 BENT BAR (LEVEL II, DUAL COATED)	22
18	BU-503L	#5 BENT BAR (LEVEL II, DUAL COATED)	30
19	BU-504L	#5 BENT BAR (LEVEL II, DUAL COATED)	31
20	BU-505L	#5 BENT BAR (LEVEL II, DUAL COATED)	1
21	BU-506L	#5 BENT BAR (LEVEL II, DUAL COATED)	4
22	BU-507L	#5 BENT BAR (LEVEL II, DUAL COATED)	1
23	BU-508L	#5 BENT BAR (LEVEL II, DUAL COATED)	1
24	BU-509L	#5 BENT BAR (LEVEL II, DUAL COATED)	1
25	BU-510L	#5 BENT BAR (LEVEL II, DUAL COATED)	11
26	BU-511L	#5 BENT BAR (LEVEL II, DUAL COATED)	1
27	BU-512L	#5 BENT BAR (LEVEL II, DUAL COATED)	1
28	BU-513L	#5 BENT BAR (LEVEL II, DUAL COATED)	1
29	BU-514L	#5 BENT BAR (LEVEL II, DUAL COATED)	1
30	BU-515L	#5 BENT BAR (LEVEL II, DUAL COATED)	1
31	BU-516L	#5 BENT BAR (LEVEL II, DUAL COATED)	1
32	BU-517L	#5 BENT BAR (LEVEL II, DUAL COATED)	1
33	BU-518L	#5 BENT BAR (LEVEL II, DUAL COATED)	1
34	BU-519L	#5 BENT BAR (LEVEL II, DUAL COATED)	2
35	BU-520L	#5 BENT BAR (LEVEL II, DUAL COATED)	5
36		#5 x 4'-8" (LEVEL II, DUAL COATED)	14
37		#5 x 7'-3" (LEVEL II, DUAL COATED)	6
38		#5 x 7'-5" (LEVEL II, DUAL COATED)	6
39		#5 x 7'-10" (LEVEL II, DUAL COATED)	60
40		#5 x 7'-11" (LEVEL II, DUAL COATED)	46
41		#5 x 8'-0" (LEVEL II, DUAL COATED)	28
42		#5 x 8'-1" (LEVEL II, DUAL COATED)	12
43		#5 x 8'-2" (LEVEL II, DUAL COATED)	12
44		#5 x 8'-3" (LEVEL II, DUAL COATED)	8
45		#5 x 8'-4" (LEVEL II, DUAL COATED)	12
46		#5 x 8'-1" (LEVEL II, DUAL COATED)	16
47		#5 x 9'-0" (LEVEL II, DUAL COATED)	2
48		#5 x 9'-2" (LEVEL II, DUAL COATED)	8
49		#5 x 9'-3" (LEVEL II, DUAL COATED)	8
50		#5 x 12'-2" (LEVEL II, DUAL COATED)	2
51		#5 x 20'-8" (LEVEL II, DUAL COATED)	2
52		#5 x 20'-2" (LEVEL II, DUAL COATED) STAGGERED LAP (LEVEL II, DUAL COATED)	12
53		#5 x 62'-5" (40'-0" + 24'-5" W/ (1) 2'-0" STAGGERED LAP) (LEVEL II, DUAL COATED)	12
54		SET OF (4) 0.50" x 210 KSI 5-STRAND LIFTING LOOPS	4
55		DAYTON B-16 COIL LOOP INSERTS, 3/4" COLL. SML. 3000	28

SHOP DRAWING REVIEW

DESIGNED AS REQUIRED BY THE CONSTRUCTION CONTRACT DOCUMENTS AND APPROVED, BUT ONLY FOR CONFORMANCE TO THE DESIGN CONCEPT OF THE WORK, AND SUBJECT TO FURTHER LIMITATIONS AND REQUIREMENTS CONTAINED IN THE CONSTRUCTION CONTRACT DOCUMENTS.

REJECTED REVISE AND RESUBMIT APPROVED AS NOTED

CORRECTIONS OR COMMENTS MADE ON THE SHOP DRAWINGS DURING THIS REVIEW DO NOT RELIEVE CONTRACTOR FROM COMPLIANCE WITH REQUIREMENTS OF THE DRAWINGS AND SPECIFICATIONS. THIS CHECK IS ONLY FOR REVIEW OF GENERAL CONFORMANCE WITH THE DESIGN CONCEPT OF THE PROJECT AND GENERAL COMPLIANCE WITH THE INFORMATION GIVEN IN THE CONTRACT DOCUMENTS. THE CONTRACTOR IS RESPONSIBLE FOR CONFIRMING AND CORRELATING ALL QUANTITIES AND DIMENSIONS, SELECTING FABRICATION PROCESSES AND TECHNIQUES OF CONSTRUCTION COORDINATING THEIR WORK WITH THAT OF ALL OTHER TRADES, AND PERFORMING THEIR WORK IN A SAFE AND SATISFACTORY MANNER.

CD Consulting Engineers
 60 Colchester Drive
 Shelburne, VT 05482
 802-488-8222

Job Number: 120121
 Released by: SRB
 Date: 04/10/2015

APPROVAL STAMP:

J.P. CARRARA & SONS INC.
 Precast & Prestress Manufacturer
 284 ONE ST., WOODBURY, VERMONT 05753 Phone: (802)388-6361 Fax: (802)388-6010

T. BUCK CONSTRUCTION, INC.
 CONTRACTOR
 AUBURN, MAINE

STATE OF VERMONT AGENCY OF TRANSPORTATION
 COUNTY OF CALEDONIA

TOWN OF BURKE
 VERMONT ROUTE 114
 BRIDGE NO.: 13 PROJECT NO.: BRF 0269(13)

PRESTRESSED NEXT BEAM DETAILS

DATE: MAR. 26, 2015
 SCALE: NOTED
 CHKD: DFTM: JDK
 JOB NO: 23454-D15
 DWG. NO: NBID

RECEIVED
 Vermont Agency of Transportation
 CK'D BY: OK'D BY:
 April 6, 2015
 RESUBMIT No Approved As Noted
 by Rob Young DATE 04/13/2015