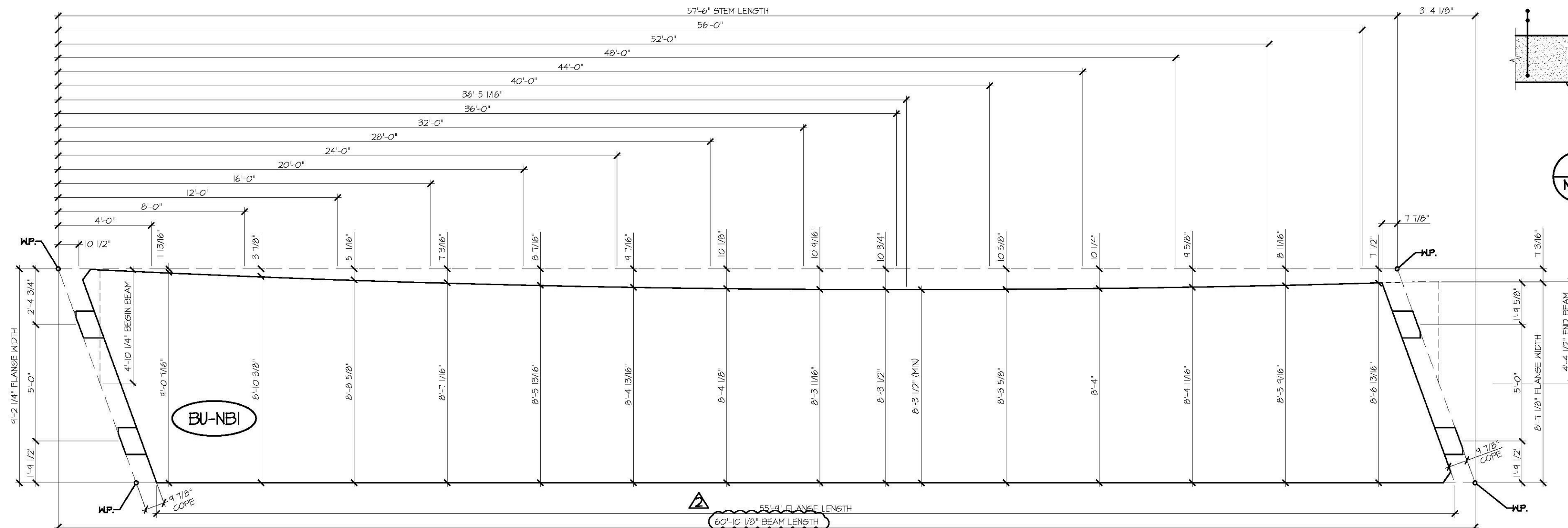
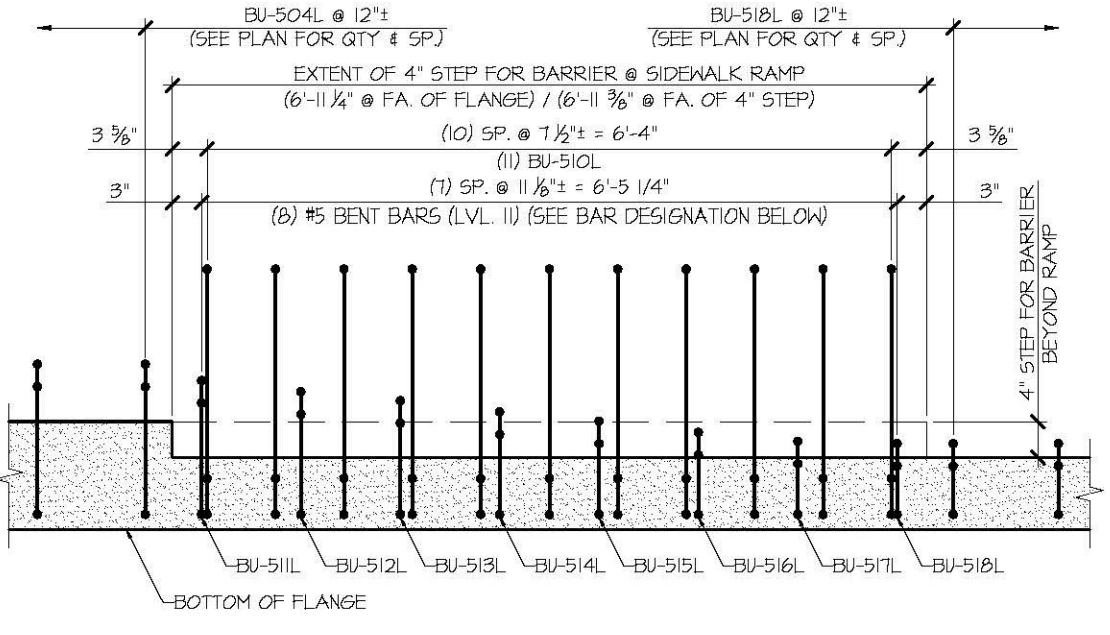


1 NB1B SIDEWALK REINFORCING PLAN VIEW IN FORM
 3/4" = 1'-0"

- SEE SHEET NB1C FOR STEM REINFORCING AT BEAM ENDS
 - SEE SHEET NB1D FOR FLANGE REINFORCING AT BEAM END



2 NB1B CURVED FLANGE LAYOUT
 3/4" = 1'-0"



A NB1B SIDEWALK TRANSITION REINFORCING SECTION
 3/4" = 1'-0"

SHOP DRAWING REVIEW

REVIEWED AS REQUIRED BY THE CONSTRUCTION CONTRACT DOCUMENTS AND APPROVED, BUT ONLY FOR CONFORMANCE TO THE DESIGN CONCEPT OF THE WORK, AND SUBJECT TO FURTHER LIMITATIONS AND REQUIREMENTS CONTAINED IN THE CONSTRUCTION CONTRACT DOCUMENTS.

REJECTED REVISE AND RESUBMIT APPROVED AS NOTED

CORRECTIONS OR COMMENTS MADE ON THE SHOP DRAWINGS DURING THIS REVIEW DO NOT RELIEVE CONTRACTOR FROM COMPLIANCE REQUIREMENTS OF THE DRAWINGS AND SPECIFICATIONS. THIS CHECK IS ONLY FOR REVIEW OF GENERAL CONFORMANCE WITH THE DESIGN CONCEPT OF THE PROJECT AND GENERAL COMPLIANCE WITH THE INFORMATION GIVEN IN THE CONTRACT DOCUMENTS. THE CONTRACTOR IS RESPONSIBLE FOR CONFIRMING AND CORRELATING ALL QUANTITIES AND DIMENSIONS, SELECTING FABRICATION PROCESSES AND TECHNIQUES OF CONSTRUCTION, COORDINATING THEIR WORK WITH THAT OF ALL OTHER TRADES AND PERFORMING THEIR WORK IN A SAFE AND SATISFACTORY MANNER.

CDI Consulting Engineers
 50 Commercial Street
 Manchester, NH 03101
 603-888-6221

Job Number: 120121
 Reviewed by: SRB
 Date: 04/10/2015

Vermont Agency of Transportation
RECEIVED
 CK'D BY: _____ OK'D BY: _____
 April 6, 2015
 RESUBMIT No Approved AsNoted
 BY Rob Young DATE 04/13/2015

APPROVAL STAMP:	J.P. CARRARA & SONS INC. Precast & Prestress Manufacturer 284 ONE ST., WOODBURY, VERMONT 05753 Phone: (802)388-6361 Fax: (802)388-6010	T. BUCK CONSTRUCTION, INC. CONTRACTOR AUBURN, MAINE
STATE OF VERMONT AGENCY OF TRANSPORTATION COUNTY OF CALEDONIA	DATE: MAR. 26, 2015	SCALE: NOTED
TOWN OF BURKE VERMONT ROUTE 114 BRIDGE NO.: 13 PROJECT NO.: BRF 0269(13)	CHKD: DFTM: JOK	JOB NO: 23454-015
PRESTRESSED NEXT BEAM DETAILS	DWG. NO: NB1B	