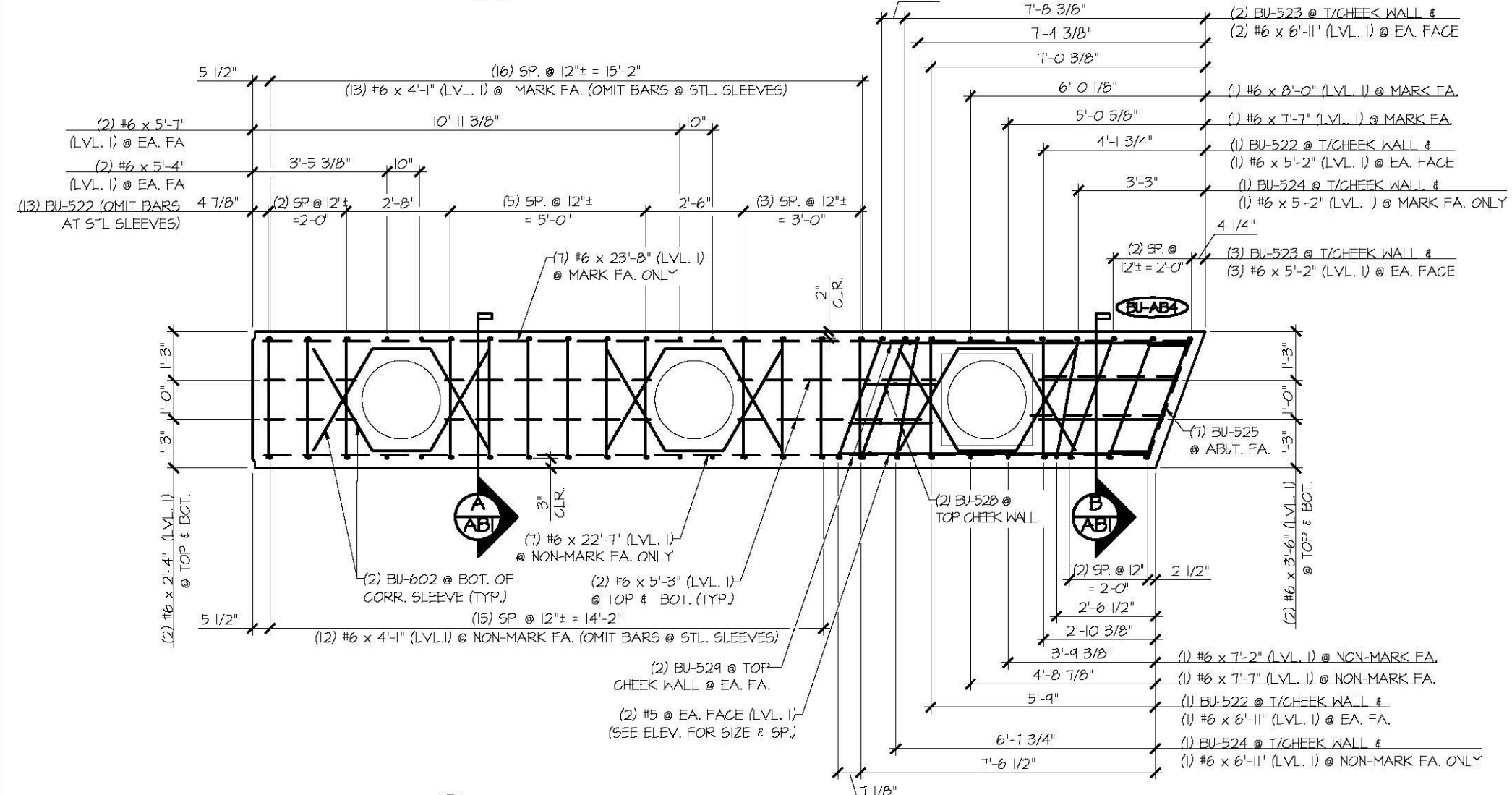
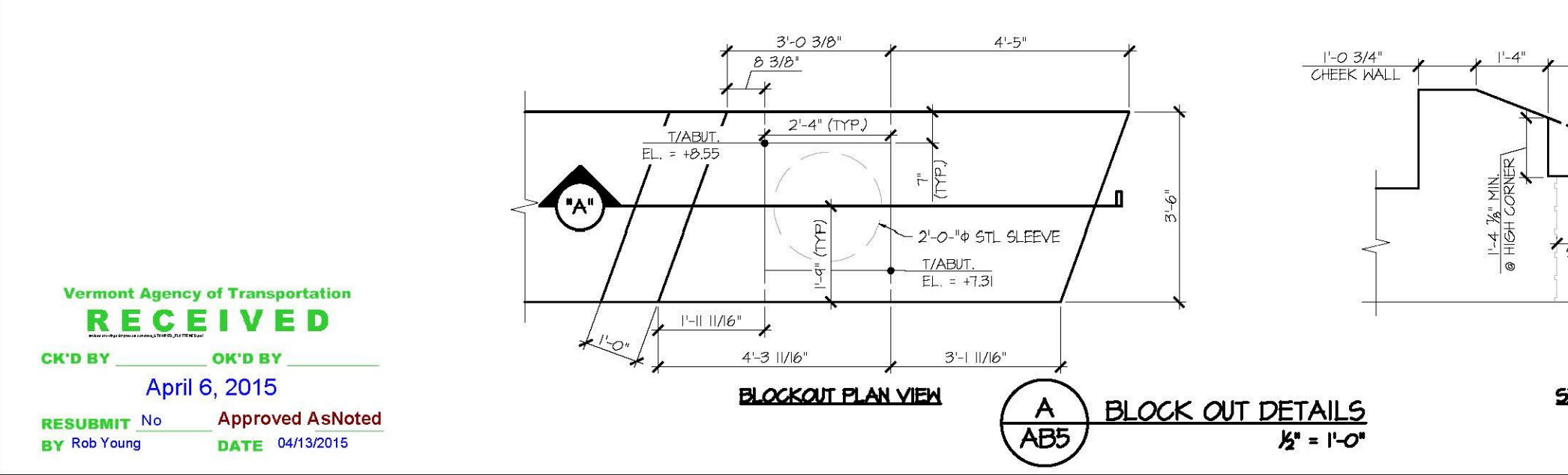


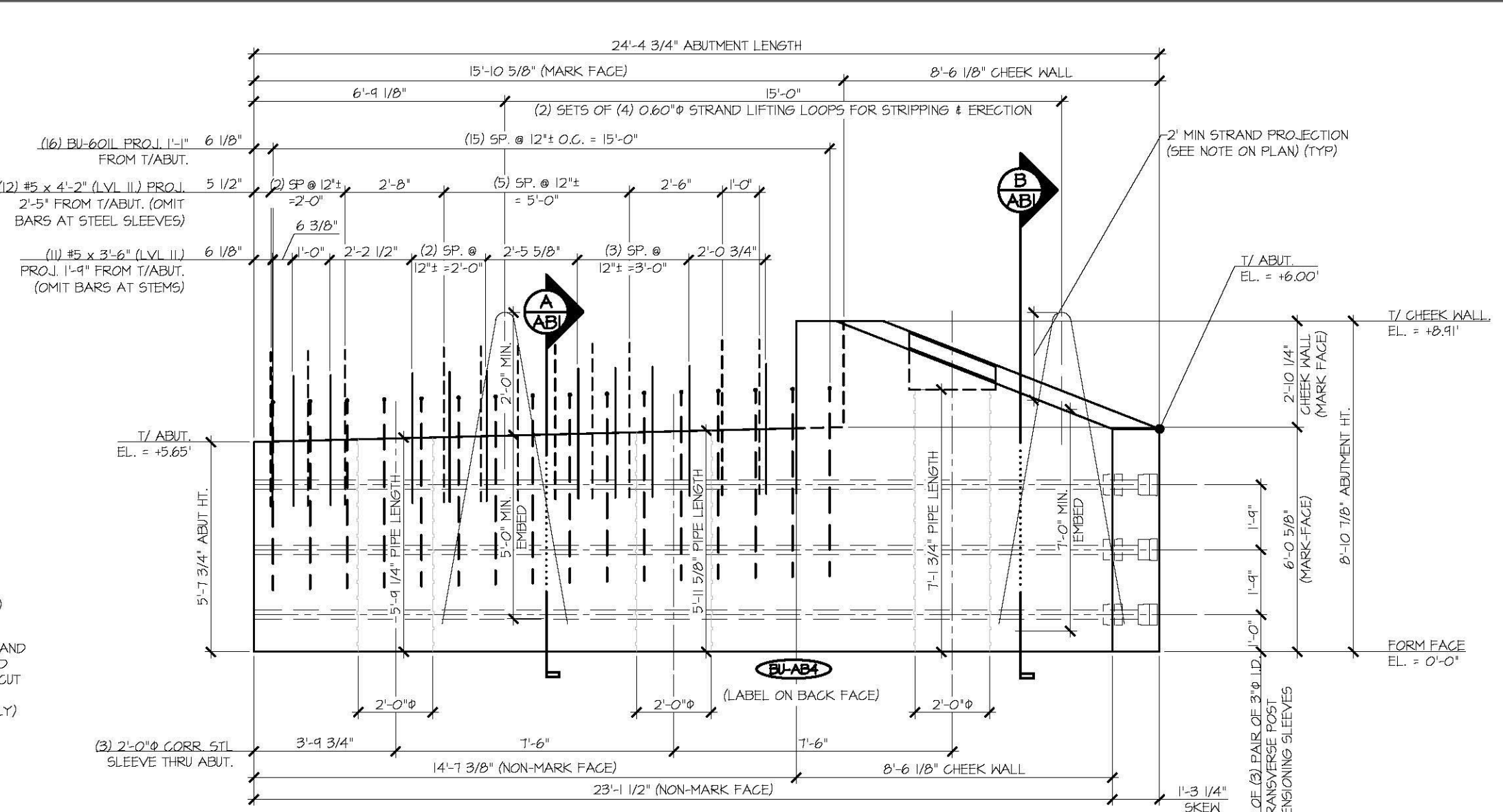
1 ABUTMENT DIMENSIONAL PLAN VIEW IN FORM
3/8" = 1'-0"



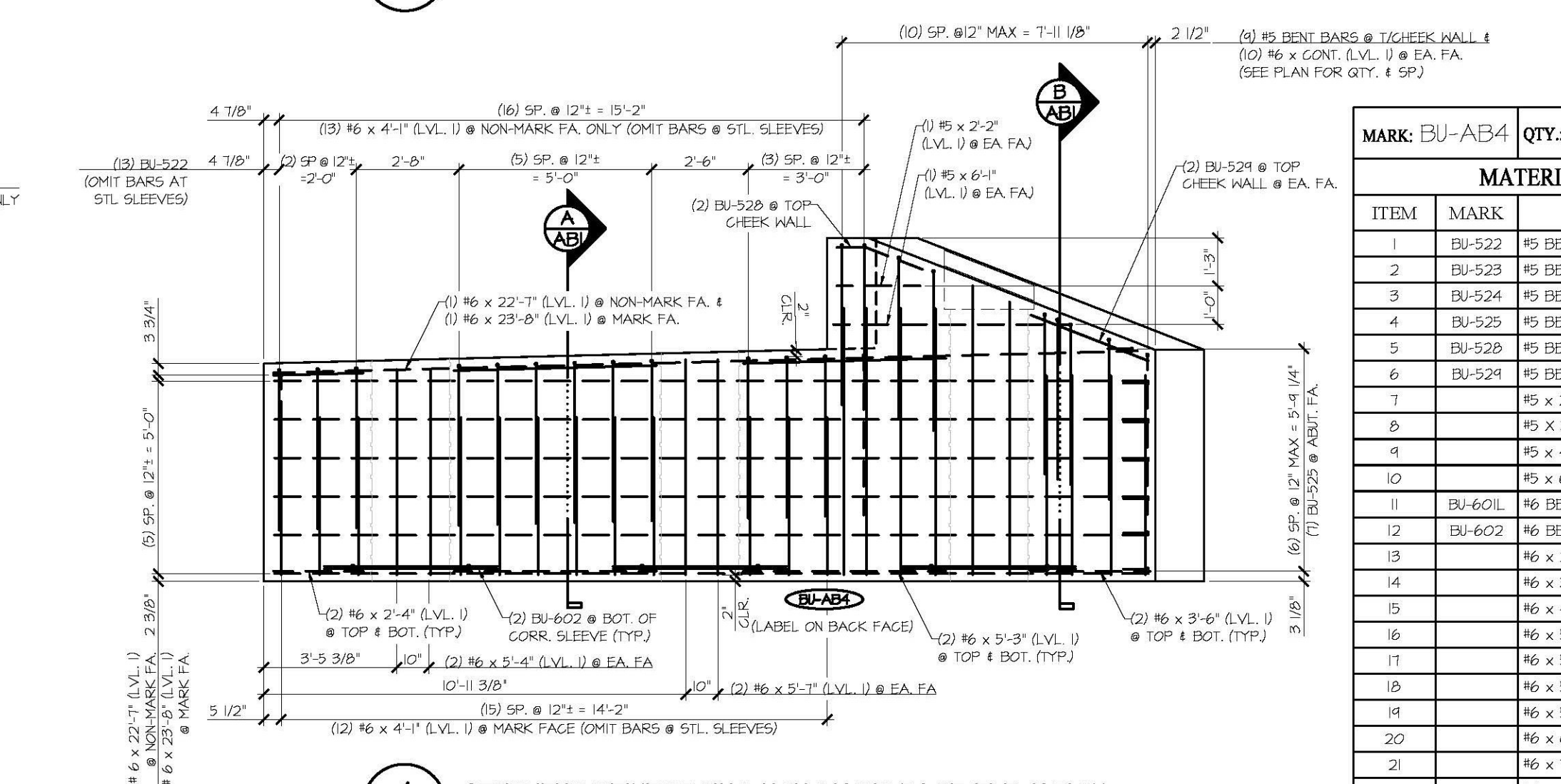
3 ABUTMENT REINFORCING PLAN VIEW IN FORM
3/8" = 1'-0"



Vermont Agency of Transportation
RECEIVED
CK'D BY: April 6, 2015
RESUBMIT No Approved AsNoted
By Rob Young DATE 04/13/2015



2 ABUTMENT DIMENSIONAL NON-MARK FACE ELEVATION
3/8" = 1'-0"



4 ABUTMENT REINFORCING NON-MARK FACE ELEVATION
3/8" = 1'-0"

MATERIAL LIST / ABUTMENT			
ITEM	MARK	DESCRIPTION	QTY.
1	BU-522	#5 BENT BAR (LEVEL I)	15
2	BU-523	#5 BENT BAR (LEVEL I)	5
3	BU-524	#5 BENT BAR (LEVEL I)	2
4	BU-525	#5 BENT BAR (LEVEL I)	7
5	BU-528	#5 BENT BAR (LEVEL I)	2
6	BU-524	#5 BENT BAR (LEVEL I)	2
7		#5 x 2'-2" (LEVEL I)	2
8		#5 x 3'-6" (LEVEL II, DUAL COATED)	11
9		#5 x 4'-2" (LEVEL II, DUAL COATED)	12
10		#5 x 6'-4" (LEVEL I)	2
11	BU-601L	#6 BENT BAR (LEVEL II, DUAL COATED)	16
12	BU-602	#6 BENT BAR (LEVEL I)	6
13		#6 x 2'-4" (LEVEL I)	4
14		#6 x 3'-6" (LEVEL I)	4
15		#6 x 4'-1" (LEVEL I)	25
16		#6 x 5'-2" (LEVEL I)	4
17		#6 x 5'-3" (LEVEL I)	0
18		#6 x 5'-4" (LEVEL I)	4
19		#6 x 5'-7" (LEVEL I)	4
20		#6 x 7'-2" (LEVEL I)	1
21		#6 x 7'-7" (LEVEL I)	1
22		#6 x 7'-1" (LEVEL I)	2
23		#6 x 8'-0" (LEVEL I)	1
24		#6 x 22'-7" (LEVEL I)	1
25		#6 x 23'-8" (LEVEL I)	1
26		2'-0" x 5'-4 1/2" CORR. STL. PIPE (GALV)	1
27		2'-0" x 5'-11 3/8" CORR. STL. PIPE (GALV)	1
28		2'-0" x 7'-1 3/4" CORR. STL. PIPE (GALV)	1
29		SET OF 4 0.600" x 270 KSI STRAND LIFTING LOOPS	2

SHOP DRAWING REVIEW

REVIEWED AS REQUIRED BY THE CONSTRUCTION CONTRACT DOCUMENTS AND APPROVED, BUT ONLY FOR CONFORMANCE TO THE DESIGN CONCEPT OF THE WORK, AND SUBJECT TO FURTHER LIMITATIONS AND REQUIREMENTS CONTAINED IN THE CONSTRUCTION CONTRACT DOCUMENTS.

REJECTED REVISE AND RESUBMIT APPROVED AS NOTED

CORRECTIONS OR COMMENTS MADE ON THE SHOP DRAWINGS DURING THIS REVIEW DO NOT RELIEVE CONTRACTOR FROM COMPLIANCE WITH REQUIREMENTS OF THE DRAWINGS AND SPECIFICATIONS. THIS CHECK IS ONLY FOR REVIEW OF GENERAL CONFORMANCE WITH THE DESIGN CONCEPT OF THE PROJECT AND GENERAL COMPLIANCE WITH THE INFORMATION GIVEN IN THE CONTRACT DOCUMENTS. THE CONTRACTOR IS RESPONSIBLE FOR CONFIRMING AND CORRELATING ALL QUANTITIES AND DIMENSIONS, SELECTING FABRICATION PROCESSES AND TECHNIQUES OF CONSTRUCTION, COORDINATING THEIR WORK WITH THAT OF ALL OTHER TRADES AND PERFORMING THEIR WORK IN A SAFE AND SATISFACTORY MANNER.

CJD Consulting Engineers
460 Commercial Street
Manchester, NH 03101
603.686.6223

Job Number: 120121
Reviewed by: SRE
Date: 04/10/2015

APPROVAL STAMP:

J.P. CARRARA & SONS INC.
Precast & Prestress Manufacturer
284 ONE ST., WOODBURY, VERMONT 05793 Phone: (802)388-6361 Fax: (802)388-6010

T. BUCK CONSTRUCTION, INC.
CONTRACTOR
AUBURN, MAINE

STATE OF VERMONT AGENCY OF TRANSPORTATION
COUNTY OF CALEDONIA

TOWN OF BURKE
VERMONT ROUTE 114
BRIDGE NO.: 13 PROJECT NO.: BRF 0269(13)

DATE: MAR. 26, 2015
SCALE: NOTED
CHKD: DFTM: JDK
JOB NO: 23454-015
DWG. NO: AB5