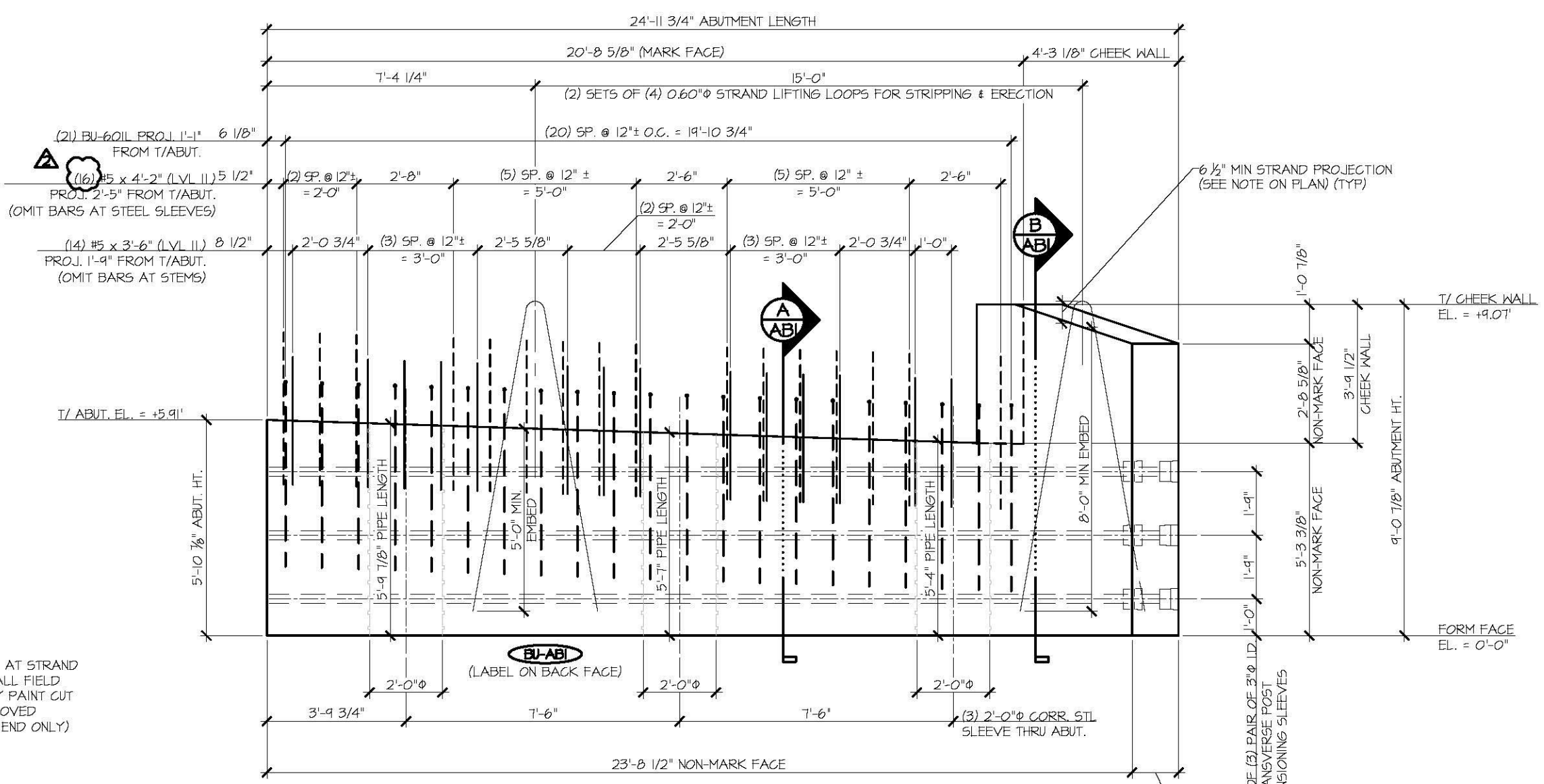
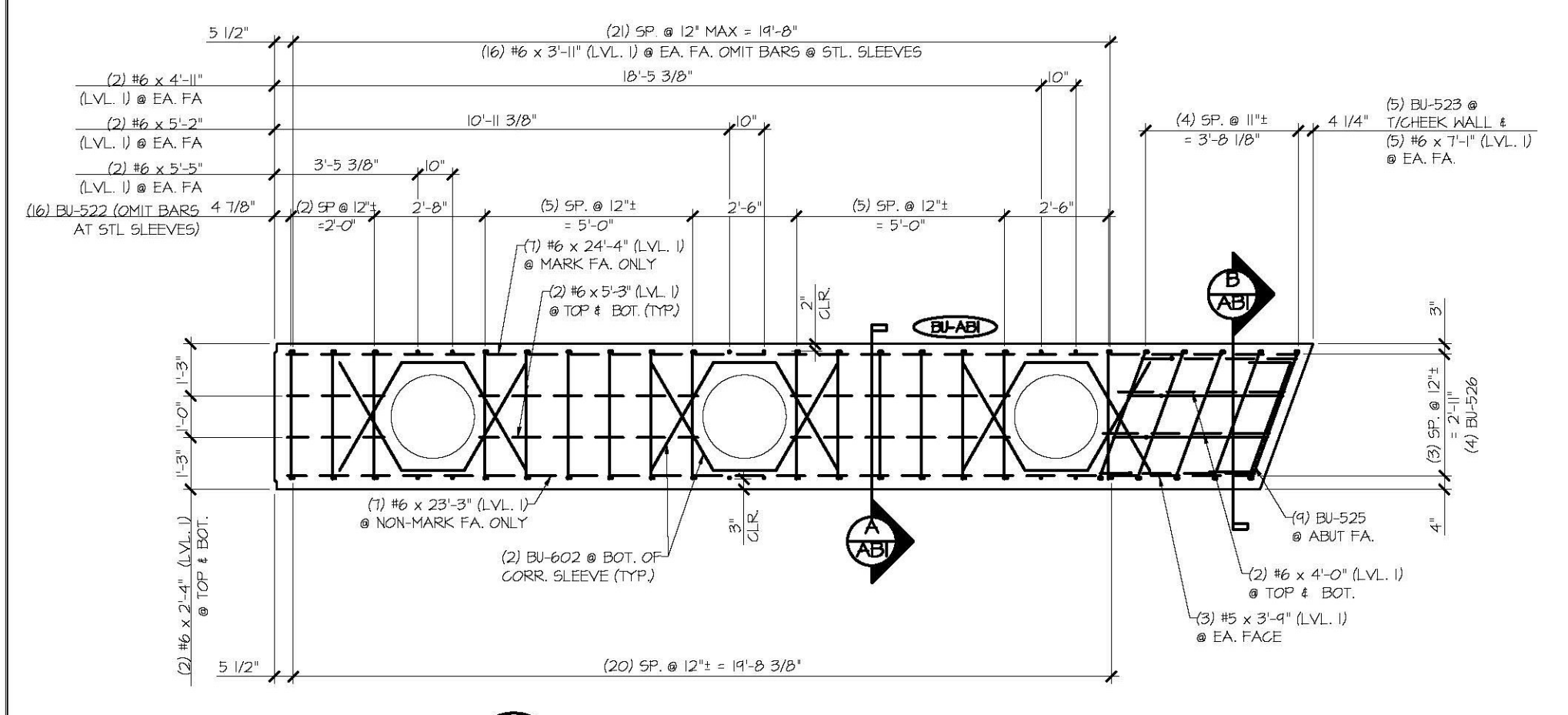


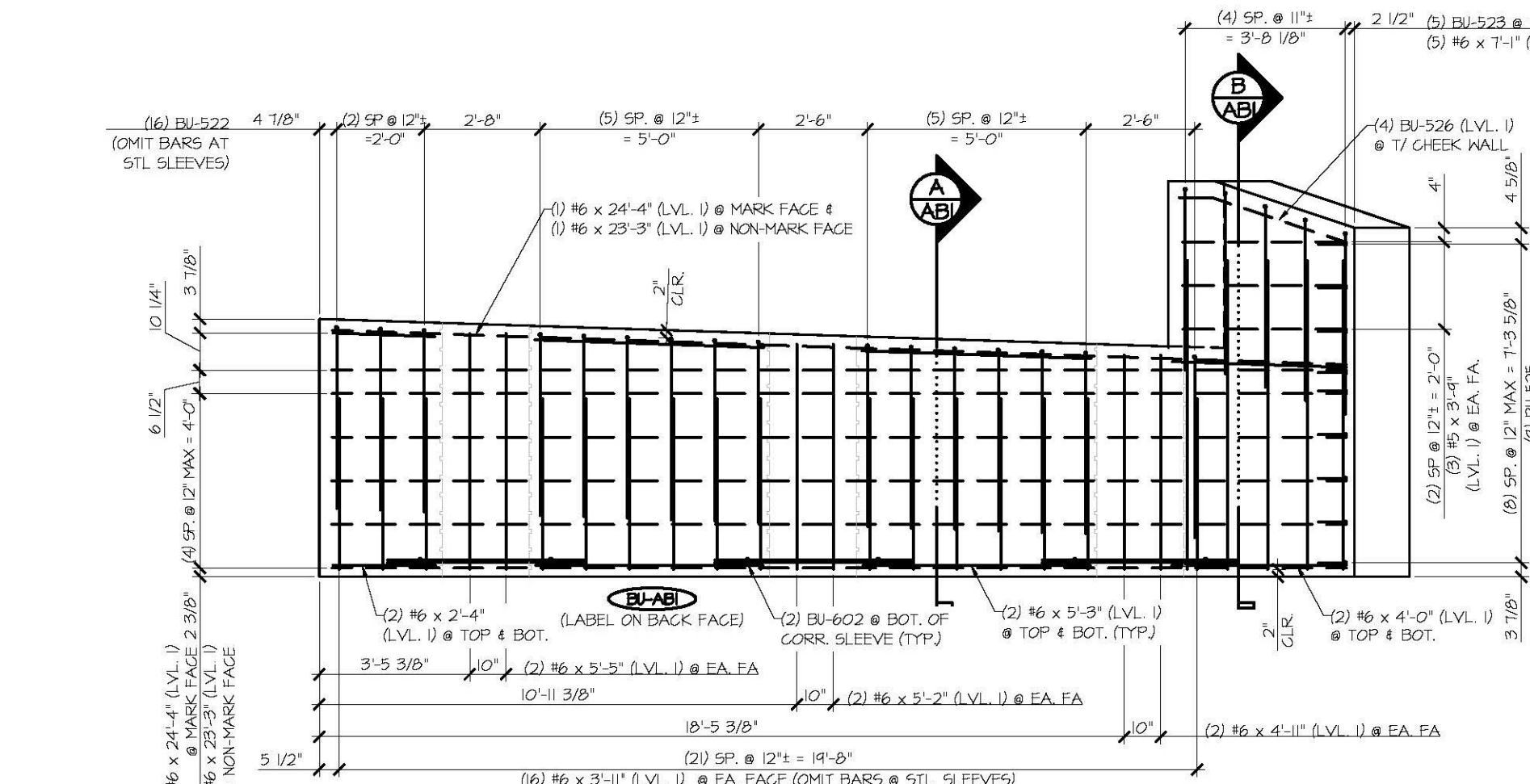
**1 ABUTMENT DIMENSIONAL PLAN VIEW IN FORM**  
 3/8" = 1'-0"



**2 ABUTMENT DIMENSIONAL NON-MARK FACE ELEVATION**  
 3/8" = 1'-0"



**3 ABUTMENT REINFORCING PLAN VIEW IN FORM**  
 3/8" = 1'-0"



**4 ABUTMENT REINFORCING NON-MARK FACE ELEVATION**  
 3/8" = 1'-0"

MATERIAL LIST / ABUTMENT			
ITEM	MARK	DESCRIPTION	QTY.
1	BU-522	#5 BENT BAR (LEVEL I)	16
2	BU-523	#5 BENT BAR (LEVEL I)	5
3	BU-525	#5 BENT BAR (LEVEL I)	4
4	BU-526	#5 BENT BAR (LEVEL I)	4
5		#5 x 3'-6" (LEVEL II, DUAL COATED)	14
6		#5 x 4'-2" (LEVEL II, DUAL COATED)	6
7		#5 x 3'-4" (LEVEL I)	6
8	BU-601	#6 BENT BAR (LEVEL II, DUAL COATED)	21
9	BU-602	#6 BENT BAR (LEVEL I)	6
10		#6 x 2'-4" (LEVEL I)	4
11		#6 x 3'-11" (LEVEL I)	32
12		#6 x 4'-0" (LEVEL I)	4
13		#6 x 4'-11" (LEVEL I)	4
14		#6 x 5'-2" (LEVEL I)	4
15		#6 x 5'-3" (LEVEL I)	8
16		#6 x 5'-5" (LEVEL I)	4
17		#6 x 7'-11" (LEVEL I)	10
18		#6 x 23'-3" (LEVEL I)	7
19		#6 x 24'-4" (LEVEL I)	7
20		2'-0" x 5'-4" CORR. STL. PIPE (GALV.)	1
21		2'-0" x 5'-7" CORR. STL. PIPE (GALV.)	1
22		2'-0" x 5'-4 1/2" CORR. STL. PIPE (GALV.)	1
23		SET OF (4) 0.60" x 270 KSI STRAND LIFTING LOOPS	2

**SHOP DRAWING REVIEW**

REVIEWED AS REQUIRED BY THE CONSTRUCTION CONTRACT DOCUMENTS AND APPROVED, BUT ONLY FOR CONFORMANCE TO THE DESIGN CONCEPT OF THE WORK, AND SUBJECT TO FURTHER LIMITATIONS AND REQUIREMENTS CONTAINED IN THE CONSTRUCTION CONTRACT DOCUMENTS.

REJECTED  REVISE AND RESUBMIT  APPROVED AS NOTED

CORRECTIONS OR COMMENTS MADE ON THE SHOP DRAWINGS DURING THIS REVIEW DO NOT RELIEVE CONTRACTOR FROM COMPLIANCE WITH REQUIREMENTS OF THE DRAWINGS AND SPECIFICATIONS. THIS CHECK IS ONLY FOR REVIEW OF GENERAL CONFORMANCE WITH THE DESIGN CONCEPT OF THE PROJECT AND GENERAL COMPLIANCE WITH THE INFORMATION GIVEN IN THE CONTRACT DOCUMENTS. THE CONTRACTOR IS RESPONSIBLE FOR CONFIRMING AND CORRECTING ALL QUANTITIES AND DIMENSIONS, SELECTING FABRICATION PROCESSES AND TECHNIQUES OF CONSTRUCTION, COORDINATING THEIR WORK WITH THAT OF ALL OTHER TRADES, AND PERFORMING THEIR WORK IN A SAFE AND SATISFACTORY MANNER.

**CLD** Consulting Engineers  
 440 Commercial Street  
 Montpelier, VT 05602  
 802-888-8202

Job Number: **120121**  
 Reviewed by: **SRB**  
 Date: **04/10/2015**

Vermont Agency of Transportation  
**RECEIVED**  
 CK'D BY: **OK'D BY**  
**April 6, 2015**  
 RESUBMIT No  Approved AsNoted   
 BY Rob Young DATE 04/13/2015

APPROVAL STAMP:

**J.P. CARRARA & SONS INC.**  
 Precast & Prestress Manufacturer  
 284 ONE STR. MIDDLEBURY, VERMONT 05753 Phone: (802)388-6361 Fax: (802)388-6010

**T. BUCK CONSTRUCTION, INC.**  
 CONTRACTOR  
 AUBURN, MAINE

STATE OF VERMONT AGENCY OF TRANSPORTATION  
 COUNTY OF CALEDONIA

DATE: MAR. 26, 2015  
 SCALE: NOTED

TOWN OF BURKE  
 VERMONT ROUTE 114  
 BRIDGE NO.: 13 PROJECT NO.: BRF 0269(13)

CHKD: DFTM: JOK  
 JOB NO: 23454-015

PRECAST ABUTMENT #1 DETAILS  
 DWG. NO: **AB2**