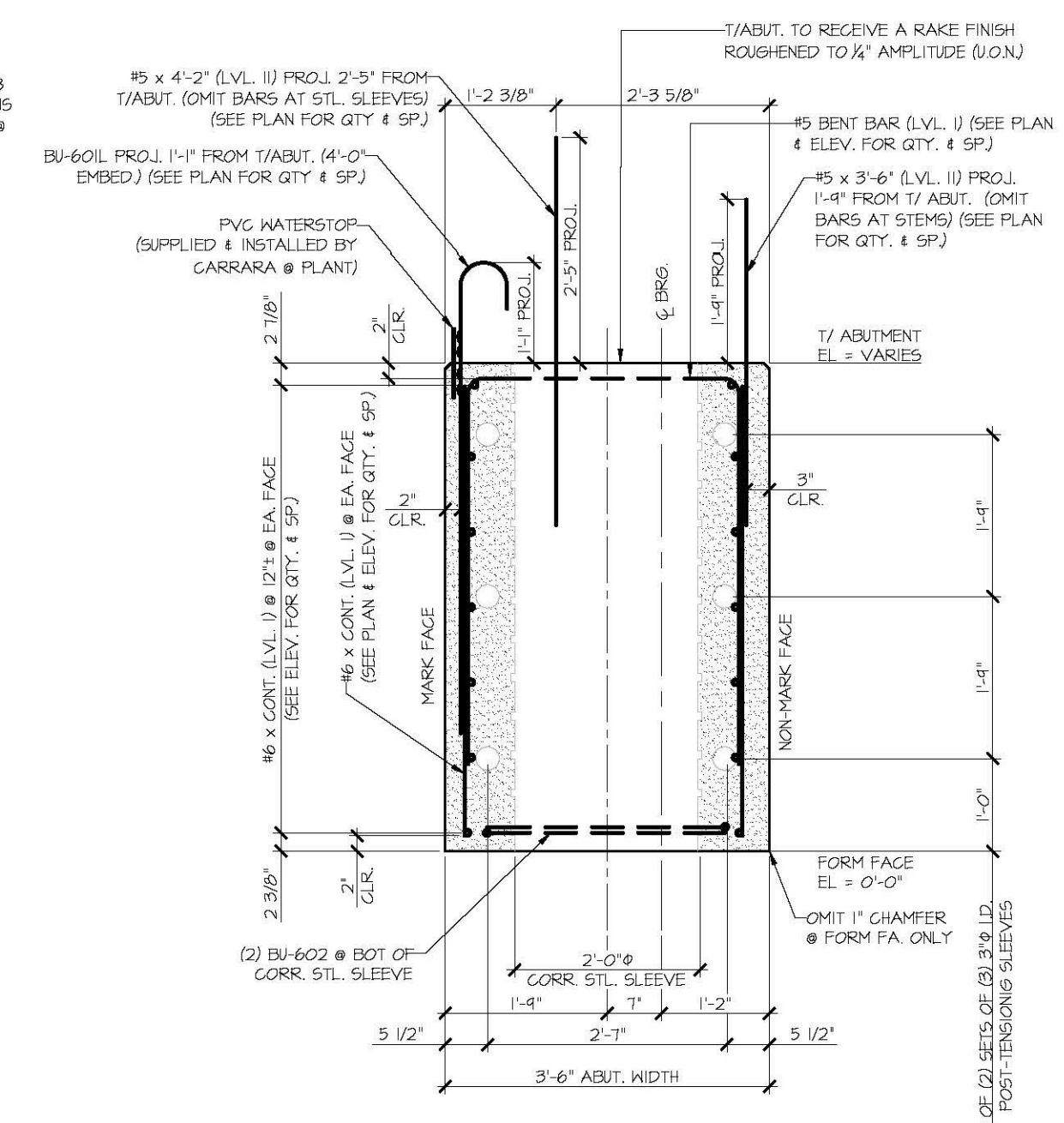
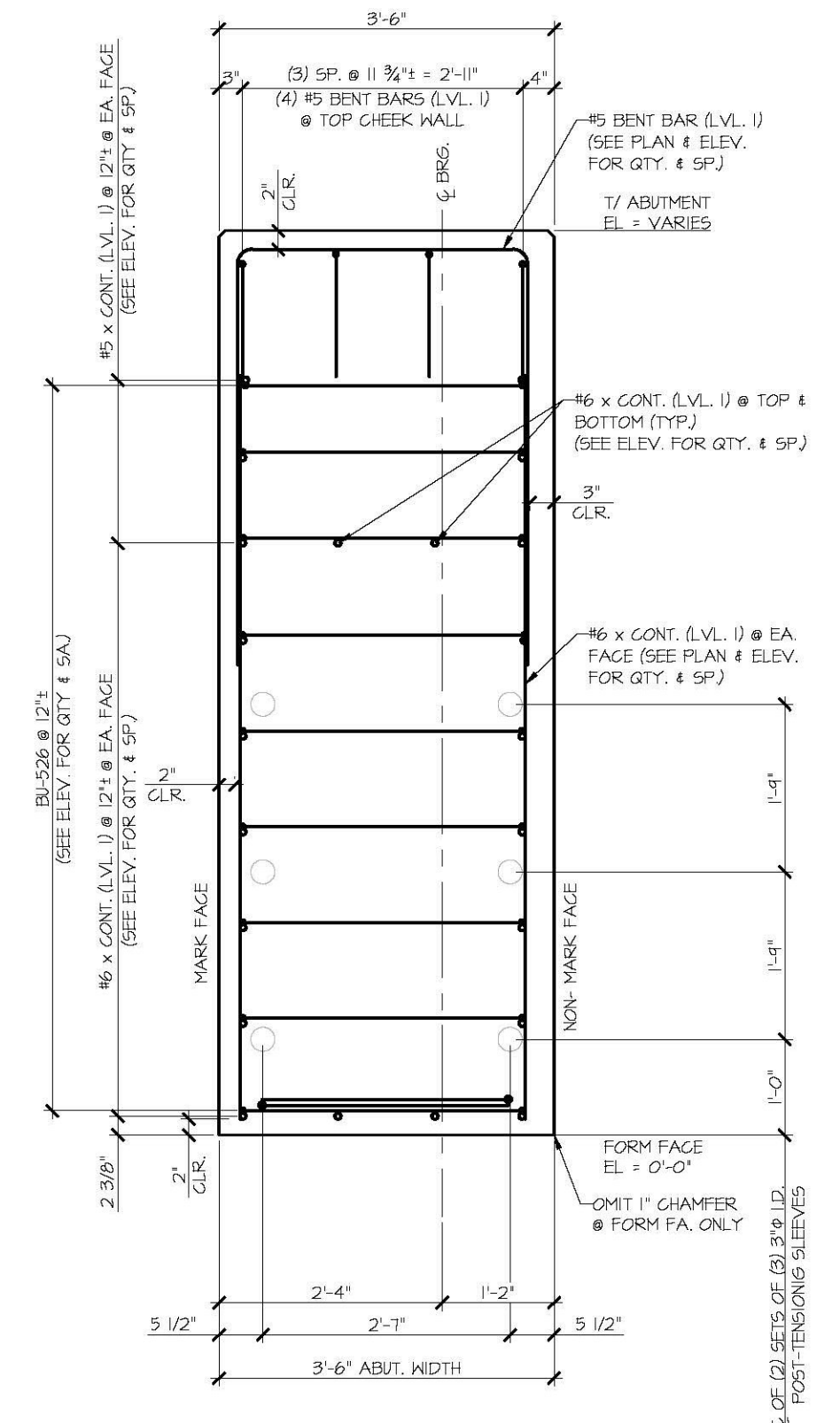


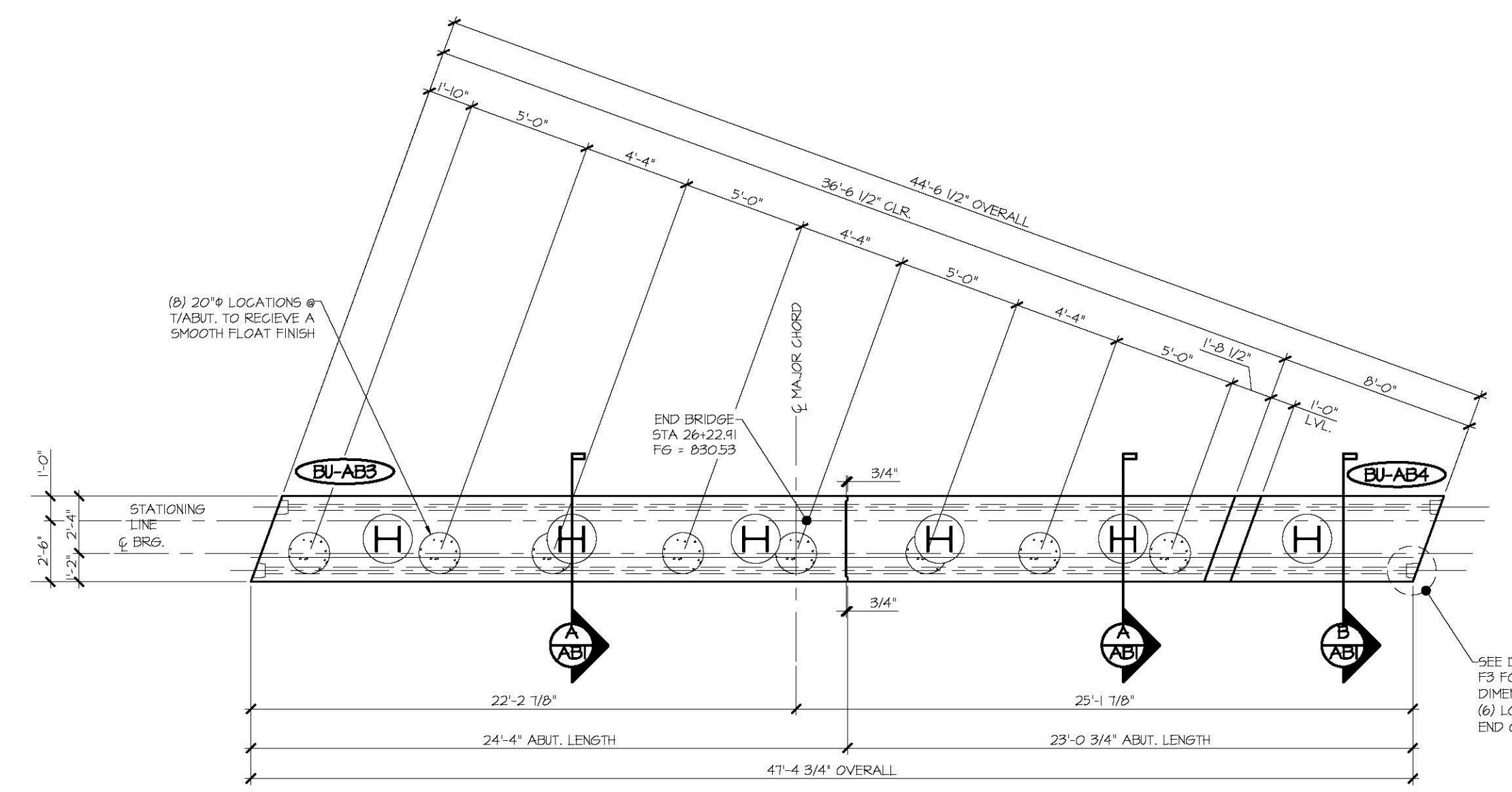
1
ABI ABUTMENT ASSEMBLY PLAN
1/4" = 1'-0"



A
ABI ABUTMENT SECTION
3/4" = 1'-0"



B
ABI ABUTMENT SECTION
3/4" = 1'-0"



2
ABI ABUTMENT ASSEMBLY PLAN
1/4" = 1'-0"

Vermont Agency of Transportation
RECEIVED
CK'D BY _____ OK'D BY _____
April 6, 2015
RESUBMIT No Approved As Noted
BY Rob Young DATE 04/13/2015

SHOP DRAWING REVIEW

REVIEWED AS REQUIRED BY THE CONSTRUCTION CONTRACT DOCUMENTS AND APPROVED, BUT ONLY FOR COMPLIANCE TO THE DESIGN CONCEPT OF THE WORK, AND SUBJECT TO FURTHER LIMITATIONS AND REQUIREMENTS CONTAINED IN THE CONSTRUCTION CONTRACT DOCUMENTS.

REJECTED REVISE AND RESUBMIT APPROVED AS NOTED

CORRECTIONS OR COMMENTS MADE ON THE SHOP DRAWINGS DURING THIS REVIEW DO NOT RELIEVE CONTRACTOR FROM COMPLIANCE WITH REQUIREMENTS OF THE DRAWINGS AND SPECIFICATIONS. THE CHECKER IS FOR REVIEW OF GENERAL CONFORMANCE WITH THE DESIGN CONCEPT OF THE PROJECT AND GENERAL COMPLIANCE WITH THE INFORMATION GIVEN IN THE CONTRACT DOCUMENTS. THE CONTRACTOR IS RESPONSIBLE FOR CONFIRMING AND CORRECTING ALL QUANTITIES AND DIMENSIONS, SELECTING FABRICATION PROCESSES AND TECHNIQUES OF CONSTRUCTION, COORDINATING THEIR WORK WITH THAT OF ALL OTHER TRADES AND PERFORMING THEIR WORK IN A SAFE AND SATISFACTORY MANNER.

CD Consulting Engineers
440 Commercial Street
Manchester, NH 03101
603-986-8223

Job Number: 120121
Reviewed by: SRB
Date: 04/10/2015

APPROVAL STAMP:

J.P. CARRARA & SONS INC. Precast & Prestress Manufacturer 284 ONE STA. WOODWAY, WINDSOR 05753 Phone: (802)388-6361 Fax: (802)388-6010		T. BUCK CONSTRUCTION, INC. CONTRACTOR AUBURN, MAINE	
STATE OF VERMONT AGENCY OF TRANSPORTATION COUNTY OF CALEDONIA		DATE: MAR. 26, 2015	SCALE: NOTED
TOWN OF BURKE VERMONT ROUTE 114 BRIDGE NO.: 13 PROJECT NO.: BRF 0269(13)		CHKD: DFTM: JDC	JOB NO: 23454-D15
PRECAST ABUTMENT PLANS & SECTION		DWG. NO: ABI	