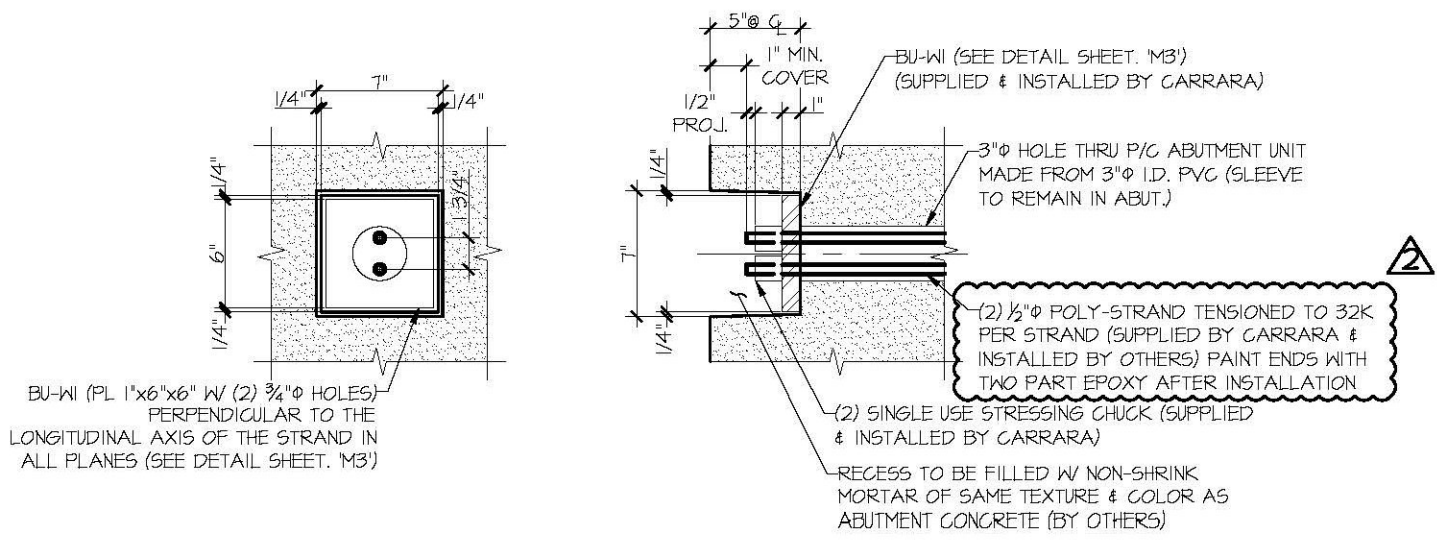
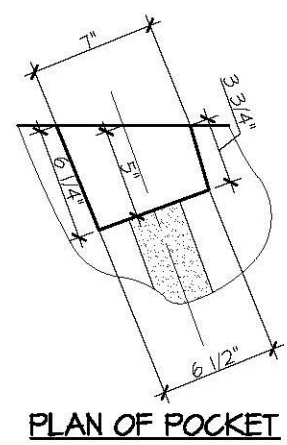


**1**  
**F3** ABUTMENT 2 ELEVATION  
1/2" = 1'-0"



ABUTMENT ELEVATION SECTION AT CENTERLINE  
DETAIL - "A"  
1/2" = 1'-0"

**SHOP DRAWING REVIEW**

REVIEWED AS REQUIRED BY THE CONSTRUCTION CONTRACT DOCUMENTS AND APPROVED, BUT ONLY FOR CONFORMANCE TO THE DESIGN CONCEPT OF THE WORK, AND SUBJECT TO FURTHER LIMITATIONS AND REQUIREMENTS CONTAINED IN THE CONSTRUCTION CONTRACT DOCUMENTS.

REJECTED  REVISE AND RESUBMIT  APPROVED AS NOTED

CORRECTIONS OR COMMENTS MADE ON THE SHOP DRAWINGS DURING THIS REVIEW DO NOT RELIEVE CONTRACTOR FROM COMPLIANCE WITH REQUIREMENTS OF THE DRAWINGS AND SPECIFICATIONS. THIS CHECK IS ONLY FOR REVIEW OF GENERAL CONFORMANCE WITH THE DESIGN CONCEPT OF THE PROJECT AND GENERAL COMPLIANCE WITH THE INFORMATION GIVEN IN THE CONTRACT DOCUMENTS. THE CONTRACTOR IS RESPONSIBLE FOR CONFIRMING AND CORRECTING ALL QUANTITIES AND DIMENSIONS. SELECT THE APPROPRIATE PROCESS AND TECHNIQUES OF CONSTRUCTION, COORDINATING THEIR WORK WITH THAT OF ALL OTHER TRADES AND PERFORMING THEIR WORK IN A SAFE AND SATISFACTORY MANNER.

CLD Consulting Engineers  
46 Commercial Street  
Montpelier, VT 05602  
802-888-9223

Job Number: 120121  
Reviewed by: SRB  
Date: 04/10/2015

Vermont Agency of Transportation  
**RECEIVED**  
APR 16 2015  
C.R.D. BY  
RESUBMIT No. Approved As Noted  
BY Rob Young DATE 04/10/2015

APPROVAL STAMP:	J.P. CARRARA & SONS INC. Precast & Prestress Manufacturer 244 DREW ST., WOODBURY, VERMONT 05053 Phone: (802)388-6361 Fax: (802)388-9010	T. BUCK CONSTRUCTION, INC. CONTRACTOR AUBURN, MAINE
	STATE OF VERMONT AGENCY OF TRANSPORTATION COUNTY OF CALEDONIA	DATE: MAR. 26, 2015 SCALE: NOTED
	TOWN OF BURKE VERMONT ROUTE 114 BRIDGE NO.: 13 PROJECT NO.: BRF 0269(13)	CHKD: DFTM: JOK JOB NO: 23454-015
	PRECAST ABUTMENT # 2 ELEVATION	DWG. NO: F3