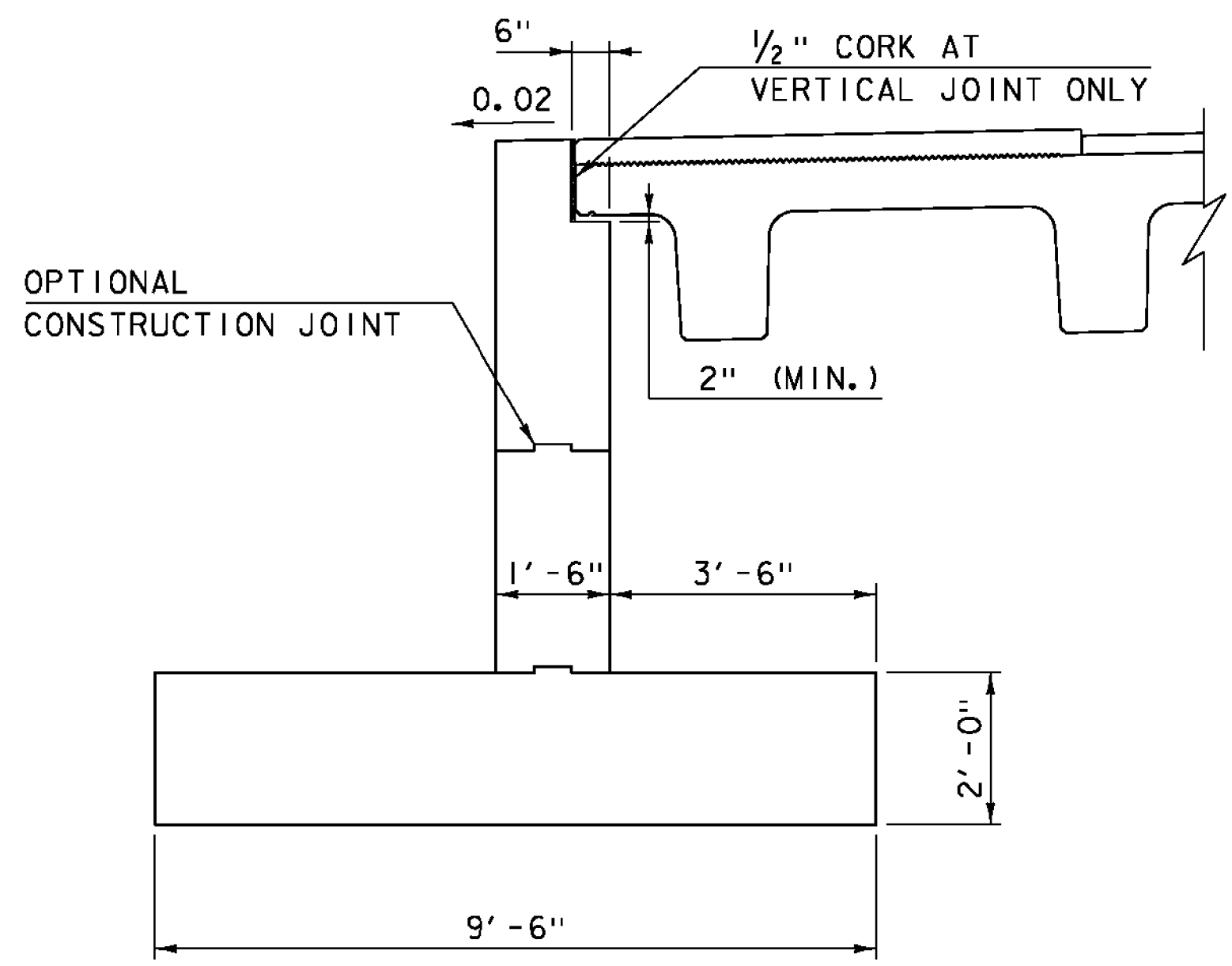
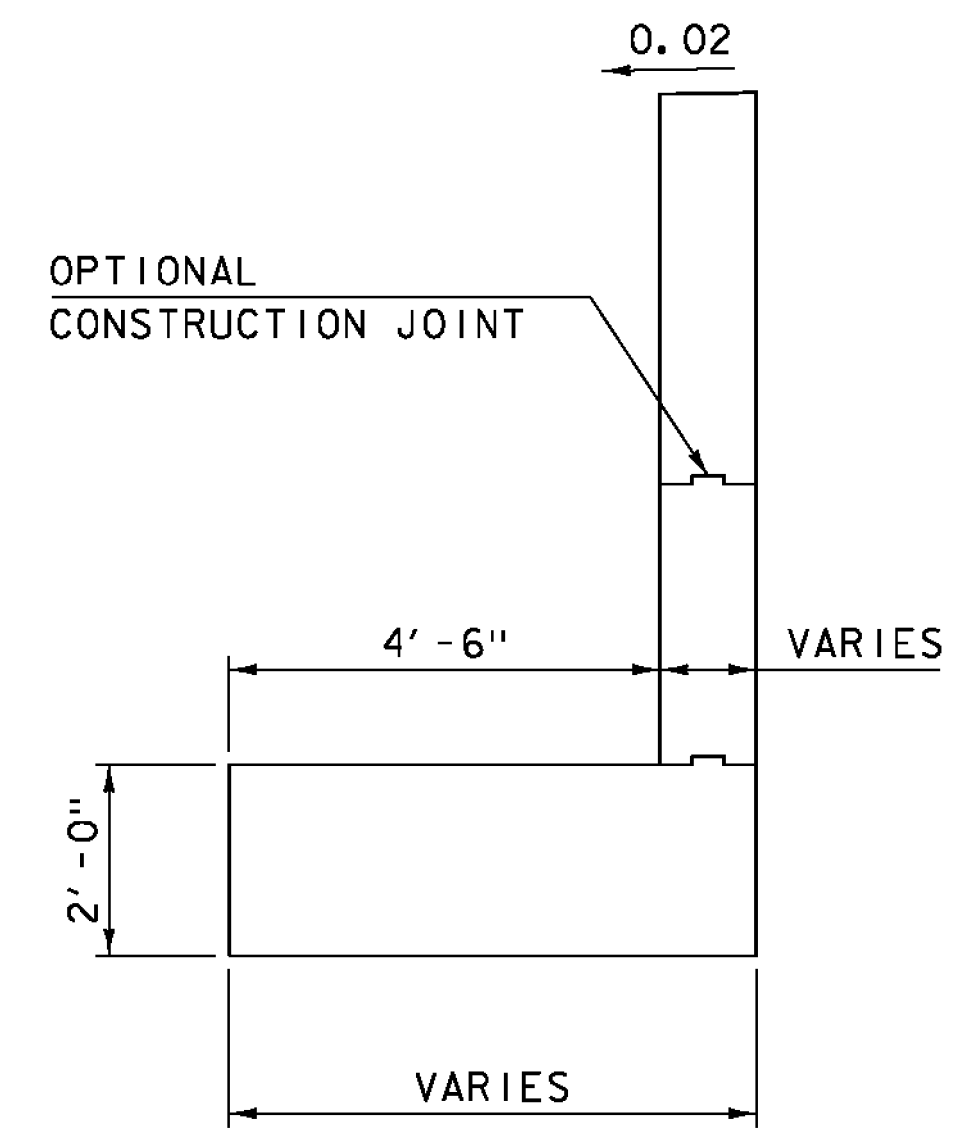


RETAINING WALL PLAN  
SCALE: 1/2" = 1'-0"



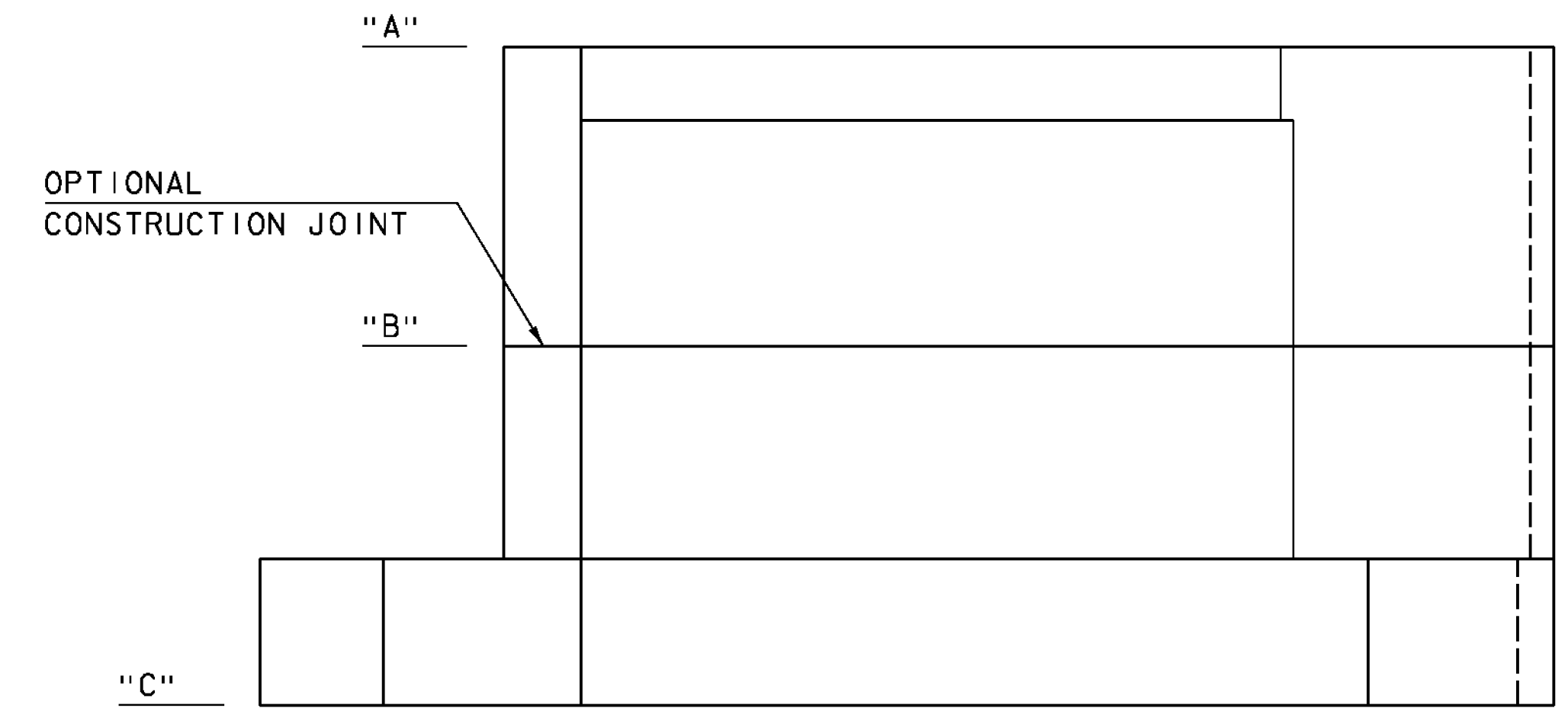
SECTION A-A  
SCALE: 1/2" = 1'-0"



SECTION B-B  
SCALE: 1/2" = 1'-0"

- NOTE:
1. THE CAST-IN-PLACE CONCRETE RETAINING WALL SHALL BE CAST DIRECTLY AGAINST THE BACK OF THE EXISTING RETAINING WALL.
  2. THE TOP OF THE RETAINING WALL ABOVE OPTIONAL CONSTRUCTION JOINT SHALL BE POURED AFTER THE BEAMS ARE SET TO ENSURE IT IS LEVEL WITH THE TOP OF THE BEAM. THE SHELF SHALL BE SET A MINIMUM OF 2" BELOW THE BOTTOM OF THE BEAM FLANGE.

RETAINING WALL ELEVATIONS	
ELEV. "A"	SEE NOTE #2
ELEV. "B"	826.50
ELEV. "C"	821.58 822.00



RETAINING WALL ELEVATION  
SCALE: 1/2" = 1'-0"

PROJECT NAME: BURKE	PLOT DATE: 10/14/2014
PROJECT NUMBER: BRF 0269(13)	DRAWN BY: M. SMITH
FILE NAME: i0c4i2/cos/z10c4i2sub.dgn	CHECKED BY: J. BYATT
PROJECT LEADER: J. BYATT	SHEET 47 OF 73
DESIGNED BY: S. BEAUMONT	
RETAINING WALL DETAILS	



C.L.D. P-0121 MODEL SUB02