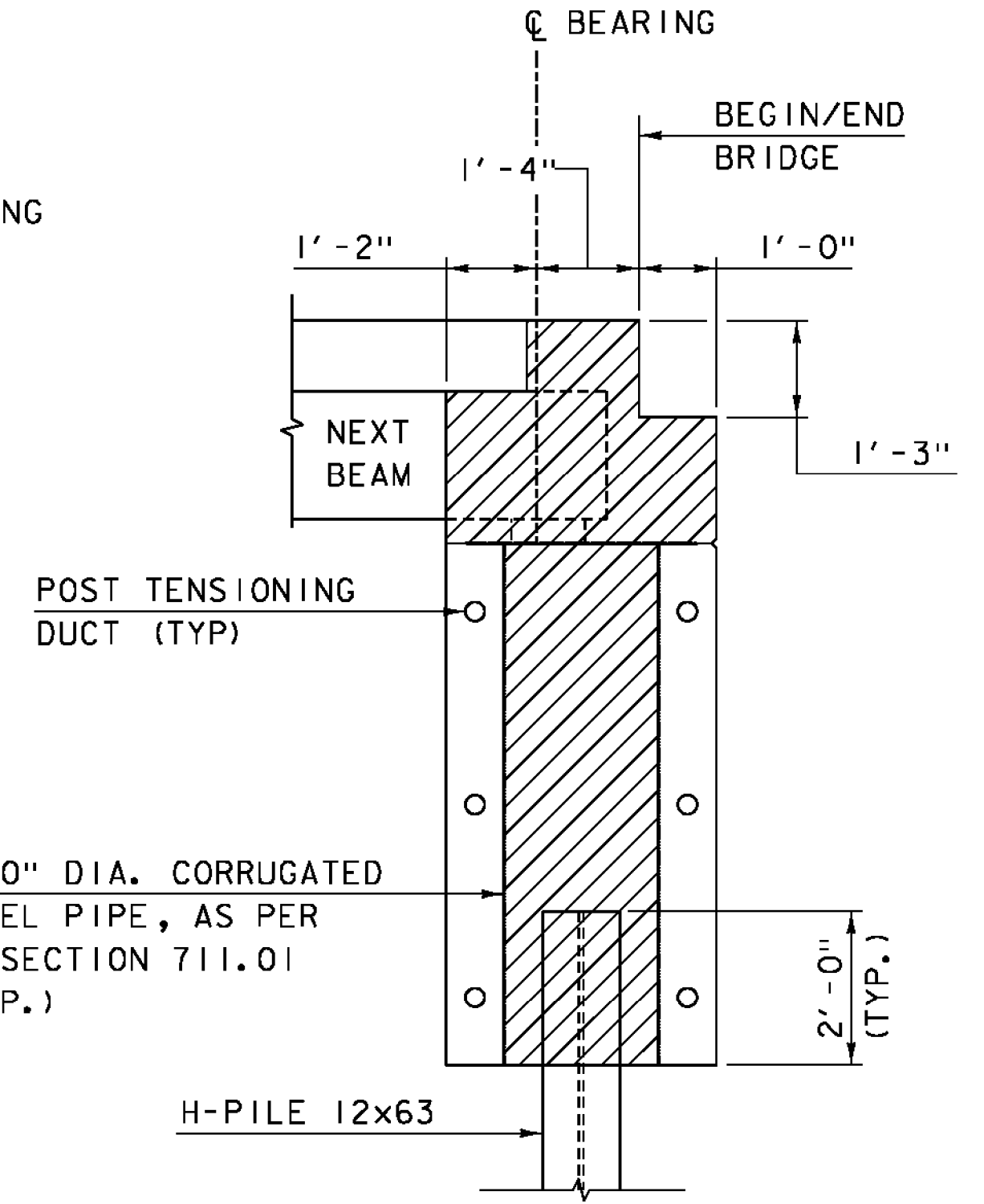
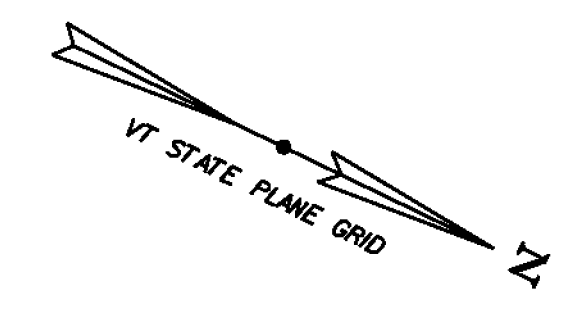
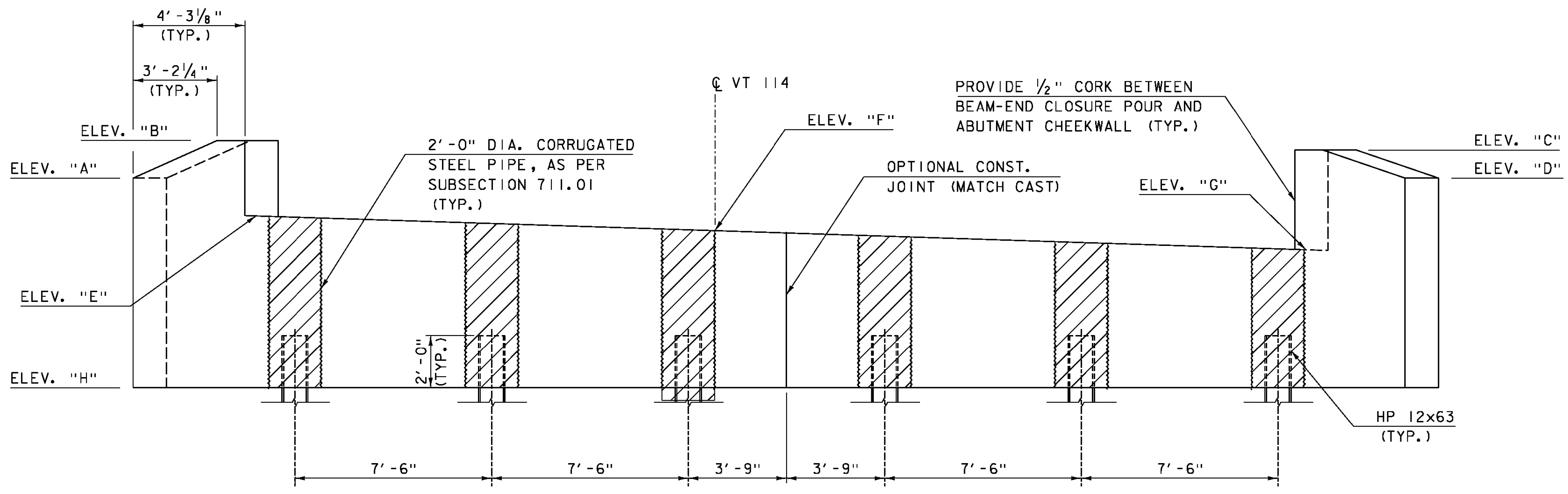


ABUTMENT I PLAN (PCU I)
SCALE: 3/8" = 1'-0"

| PILE# | LENGTH | TIP ELEV. |
|-------|--------|-----------|
| P1 | 48.11' | 773.89' |
| P2 | 47.51' | 774.49' |
| P3 | 44.61' | 777.39' |
| P4 | 45.86' | 776.14' |
| P5 | 46.94' | 775.06' |
| P6 | 48.91' | 773.09' |



ABUTMENT TYPICAL
SCALE: 1/2" = 1'-0"



ABUTMENT I ELEVATION (PCU I)
SCALE: 3/8" = 1'-0"

PCU ELEVATIONS

| | AB1 |
|----------|--------|
| ELEV "A" | 828.00 |
| ELEV "B" | 829.43 |
| ELEV "C" | 829.07 |
| ELEV "D" | 828.00 |
| ELEV "E" | 826.56 |
| ELEV "F" | 826.00 |
| ELEV "G" | 825.27 |
| ELEV "H" | 820.00 |

NOTE: ELEVATIONS ARE AT CENTERLINE BEARING

PROJECT NAME: BURKE
 PROJECT NUMBER: BRF 0269(13)
 FILE NAME: z10c412abut1.dgn
 PROJECT LEADER: J. BYATT
 DESIGNED BY: S. BEAUMONT
 ABUTMENT I PLAN

PLOT DATE: 10/14/2014
 DRAWN BY: M. SMITH
 CHECKED BY: J. BYATT
 SHEET 42 OF 73



C.D. P-012 MODEL Sheet 01