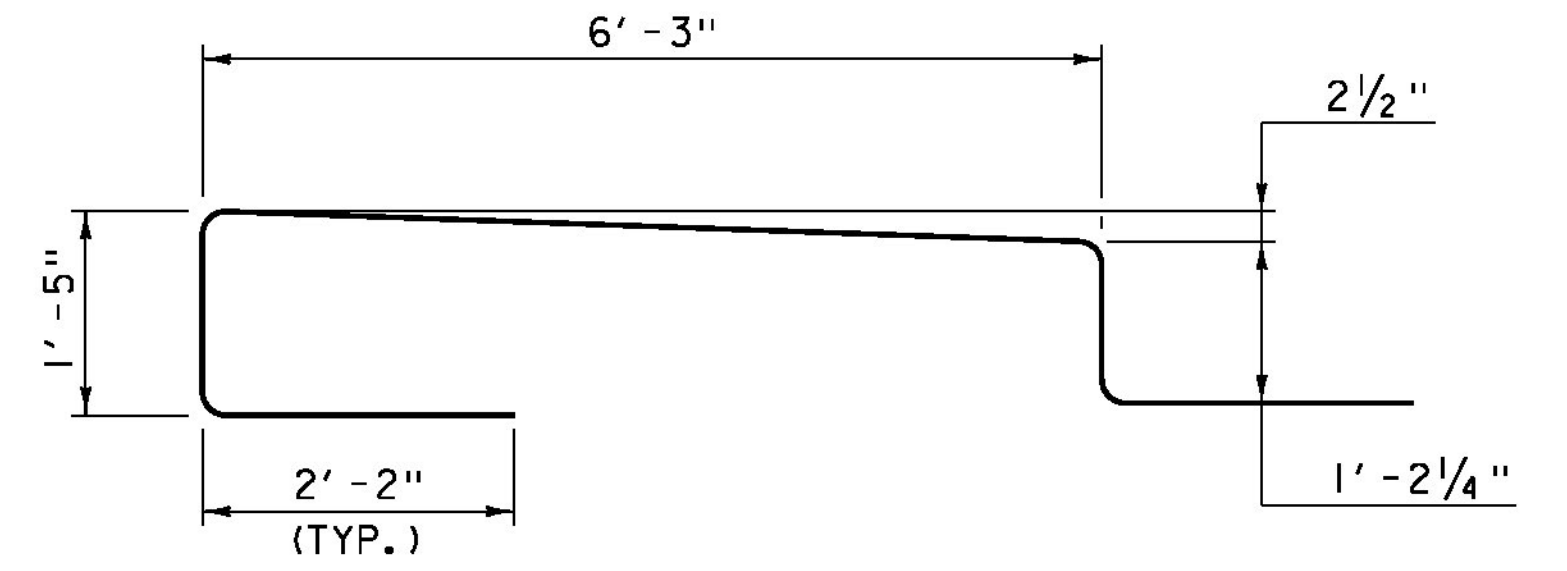
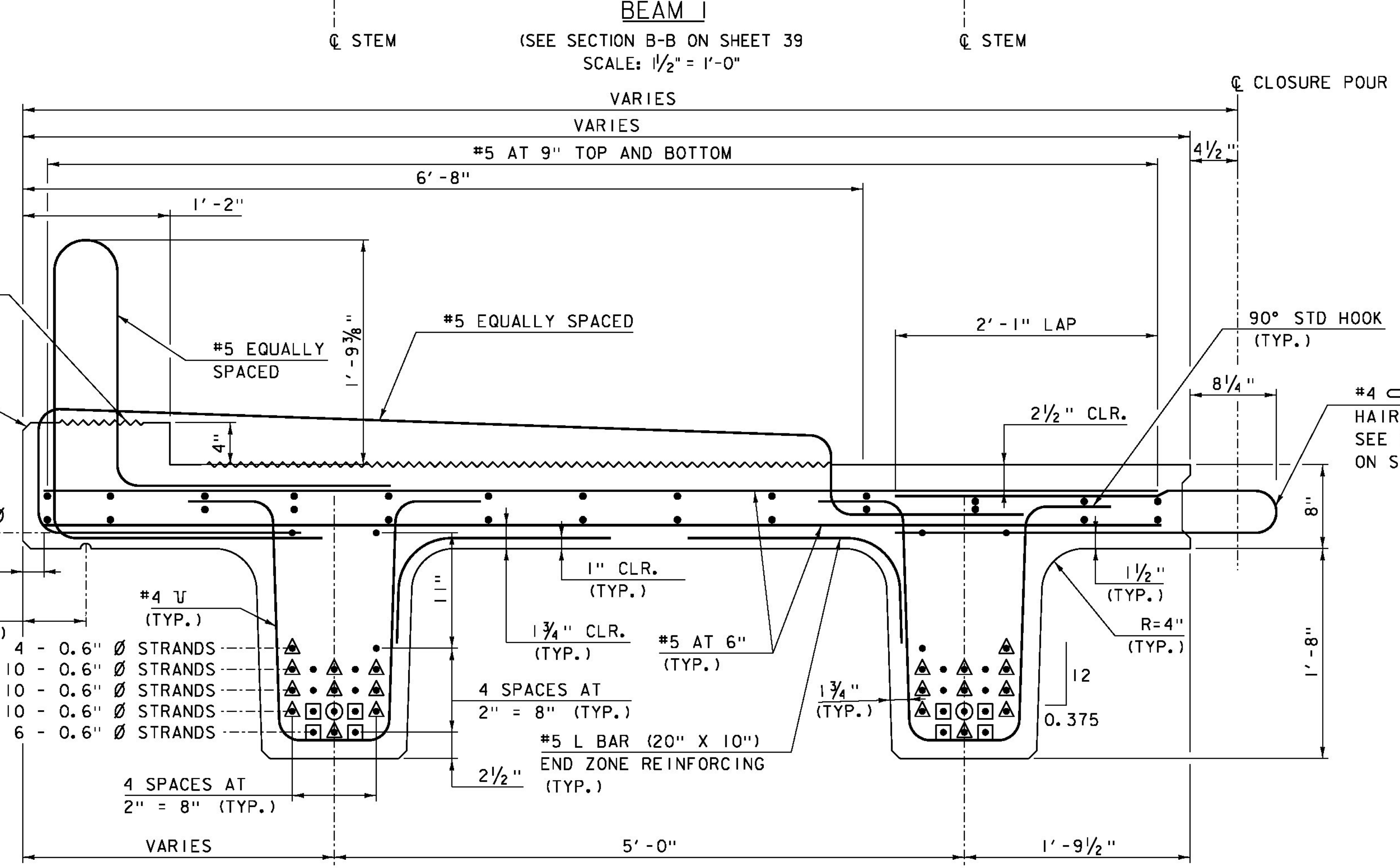
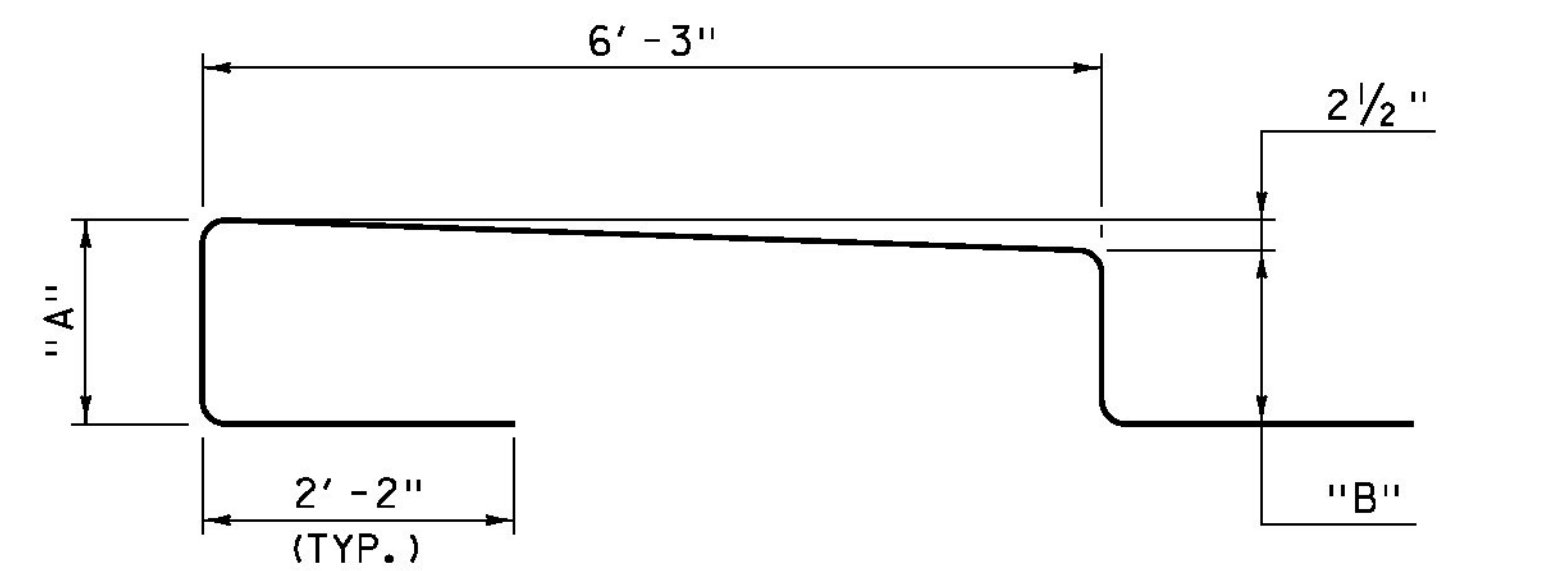


- DENOTES STRAND DEBONDED 2'-0" FROM EACH END OF BEAM
- △ DENOTES STRAND DEBONDED 6" FROM EACH END OF BEAM
- DENOTES FULLY BONDED STRAND EXTENDED 2'-0" FROM BEAM END



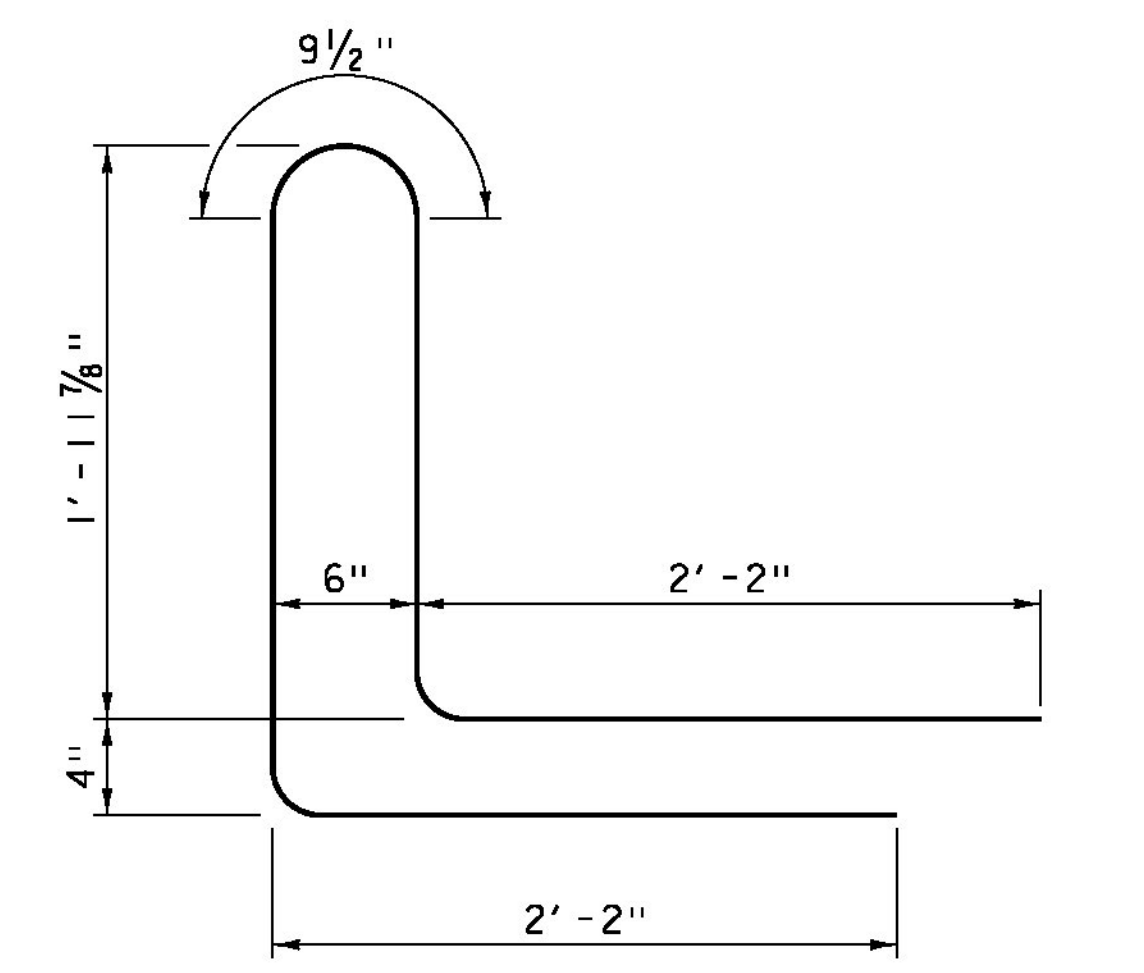
SIDEWALK BAR DETAIL
SCALE: 3/4" = 1'-0"



SIDEWALK RAMP BAR DETAIL
SCALE: 3/4" = 1'-0"

SIDEWALK BARS IN RAMP	"A"	"B"
1	1'-3 1/2"	1'-1 3/4"
2	1'-2 1/4"	1'-1"
3	1'-1 1/4"	1'-0"
4	1'-0"	11"
5	11"	10 1/4"
6	9 3/4"	9 1/4"
7	8 3/4"	8 1/4"
8	8 1/2"	8 1/4"

SEE SHEET 39 FOR SIDEWALK RAMP AND RAILING SIDEWALK RAMP SECTIONS.



RAILING SIDEWALK RAMP BAR DETAIL
SCALE: 1/2" = 1'-0"

CLD 12-0121 MODEL: Sup02



PROJECT NAME: BURKE	PLOT DATE: 10/14/2014
PROJECT NUMBER: BRF 0269(13)	DRAWN BY: M. SMITH
FILE NAME: z10c412sup.dgn	CHECKED BY: J. BYATT
PROJECT LEADER: J. BYATT	SHEET 36 OF 73
DESIGNED BY: S. BEAUMONT	
NEXT BEAM DETAILS (1 OF 5)	