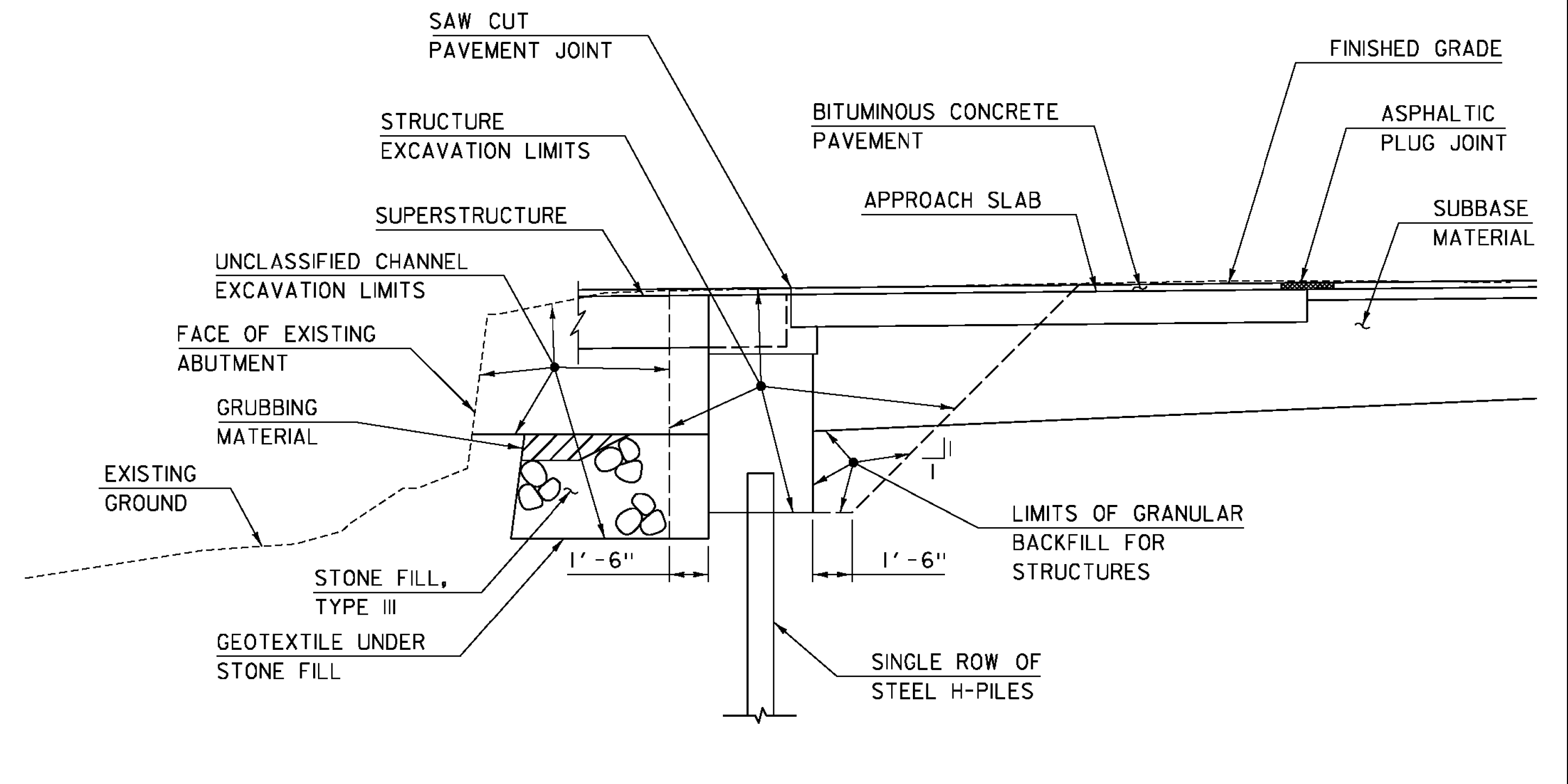


TYPICAL ABUTMENT 1/WINGWALL EARTHWORKS SECTION

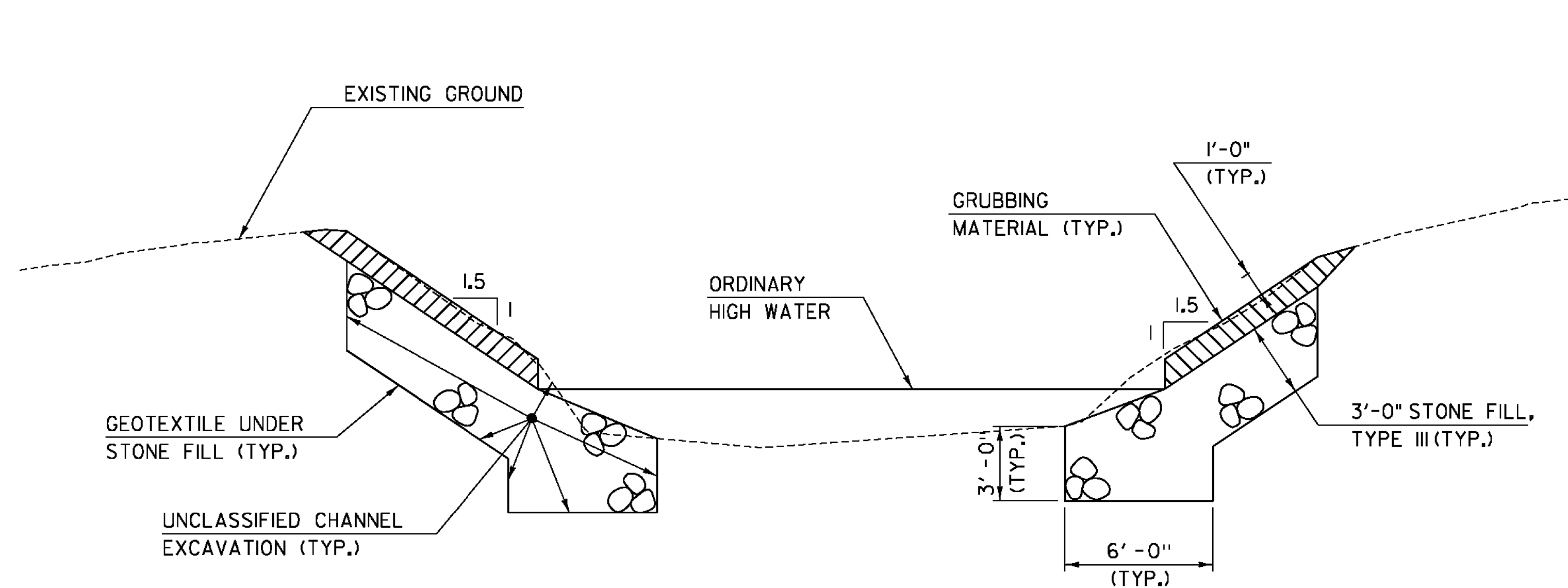
SCALE: 1/4" = 1'-0"



TYPICAL ABUTMENT 2/WINGWALL EARTHWORKS SECTION

SCALE: 1/4" = 1'-0"

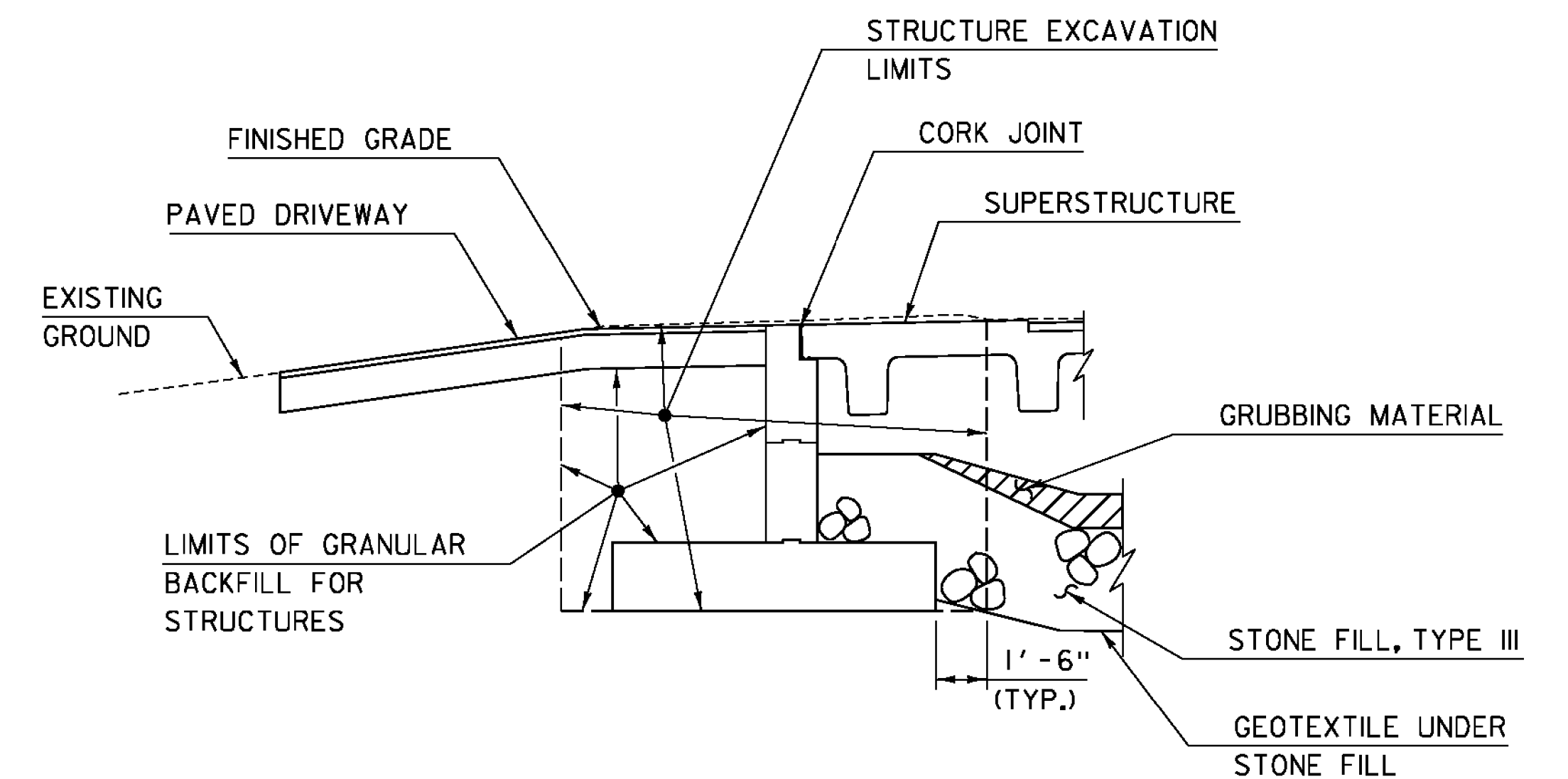
I. ACTUAL STRUCTURE EXCAVATION LIMITS SHALL BE DETERMINED BY THE CONTRACTOR. HOWEVER, ONLY THE STRUCTURE EXCAVATION BETWEEN THE LIMITS SHOWN WILL BE PAID FOR UNDER THE ITEM 204.25 "STRUCTURE EXCAVATION". ALL NECESSARY EXCAVATION OUTSIDE OF THESE LIMITS SHALL BE PAID UNDER ITEM 203.27, "UNCLASSIFIED CHANNEL EXCAVATION".



TYPICAL CHANNEL SECTION

SCALE: 1/4" = 1'-0"

WHENEVER CHANNEL SLOPE INTERSECTS ROADWAY SUBBASE, GRUBBING MATERIAL SHALL BEGIN AT THE BOTTOM OF SUBBASE.



TYPICAL RETAINING WALL EARTHWORKS SECTION (DRIVEWAY)

SCALE: 1/4" = 1'-0"

BUILT AS DESIGNED

PROJECT NAME: BURKE  
PROJECT NUMBER: BRF 0269(13)

FILE NAME: 10c412/cos/z10c412sub.dgn  
PROJECT LEADER: J. BYATT  
DESIGNED BY: S. BEAUMONT  
TYPICAL EARTHWORK SECTIONS

PLOT DATE: 10/14/2014  
DRAWN BY: M. SMITH  
CHECKED BY: J. BYATT  
SHEET 6 OF 73

