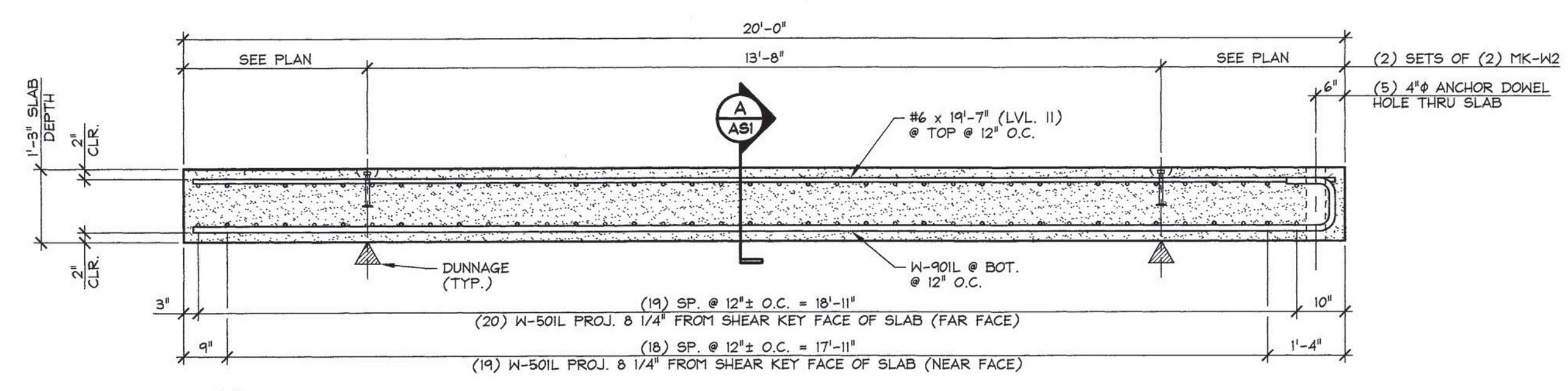
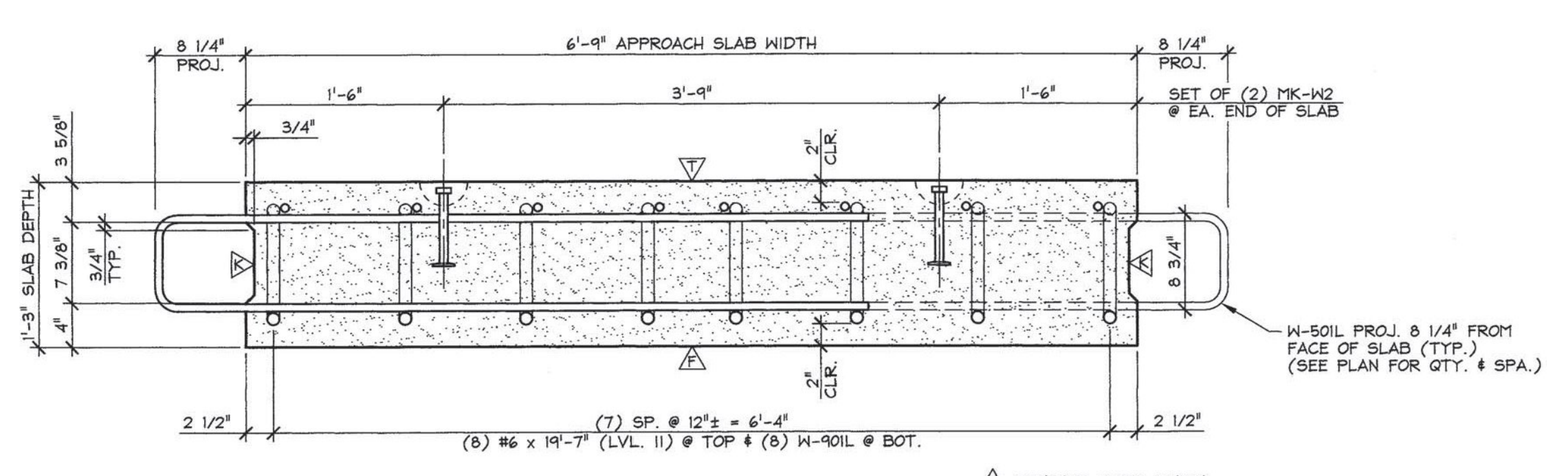


1 PLAN VIEW IN FORM
 ASI
 1/2" = 1'-0"



2 LONGITUDINAL SECTION
 ASI
 1/2" = 1'-0"



A APPROACH SLAB SECTION
 ASI
 1" = 1'-0"

MARK: W-ASI	QTY.: 4	WT.: 12.46 T	VOL.: 6.16 cy
MARK: -	QTY.: -	WT.: -	VOL.: -
MATERIAL LIST / APPROACH SLAB			
ITEM	MARK	DESCRIPTION	QTY./SLAB
1	W-50IL	#5 BENT BAR (LEVEL II, DUAL COATED)	39
2			
3		#6 x 19'-7" (LEVEL II, DUAL COATED)	8
4			
5	W-90IL	#9 BENT BAR (LEVEL II, DUAL COATED)	8
6			
7			
8	MK-H2	4T x 7 1/8" SHIFT LIFTER	4
9			
10			

APPROVAL STAMP:
Vermont Agency of Transportation
RECEIVED
 CK'D BY JDG/JW OK'D BY WDL
 January 27, 2014
 RESUBMIT No Approved
 BY KMH DATE 02/10/2014

J.P. CARRARA & SONS INC.
 Precast & Prestress Manufacturer
 2464 CASE STR., MIDDLEBURY, VERMONT 05753 Phone:(802)388-6361 Fax:(802)388-9010

MILLER CONSTRUCTION, INC.
 CONTRACTOR
 BARNARD, VERMONT

STATE OF VERMONT AGENCY OF TRANSPORTATION
 COUNTY OF WINDSOR

TOWN OF BARNARD
 VT ROUTE 12, MAJOR COLLECTOR
 BRIDGE NO.: 25 PROJECT NO.: ER BRF 0241(39)

DATE: DEC. 18, 2013
 SCALE: NOTED
 CHKD: - DFTM: B.L.
 JOB NO: 23413-013
 DWG. NO: ASI

PRECAST APPROACH SLAB DETAILS