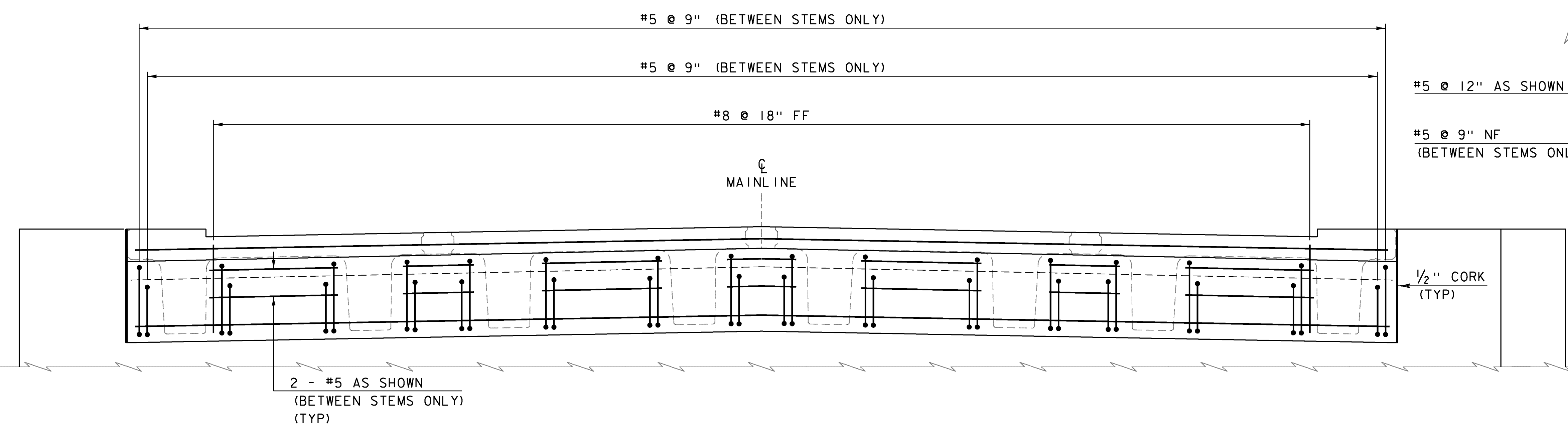
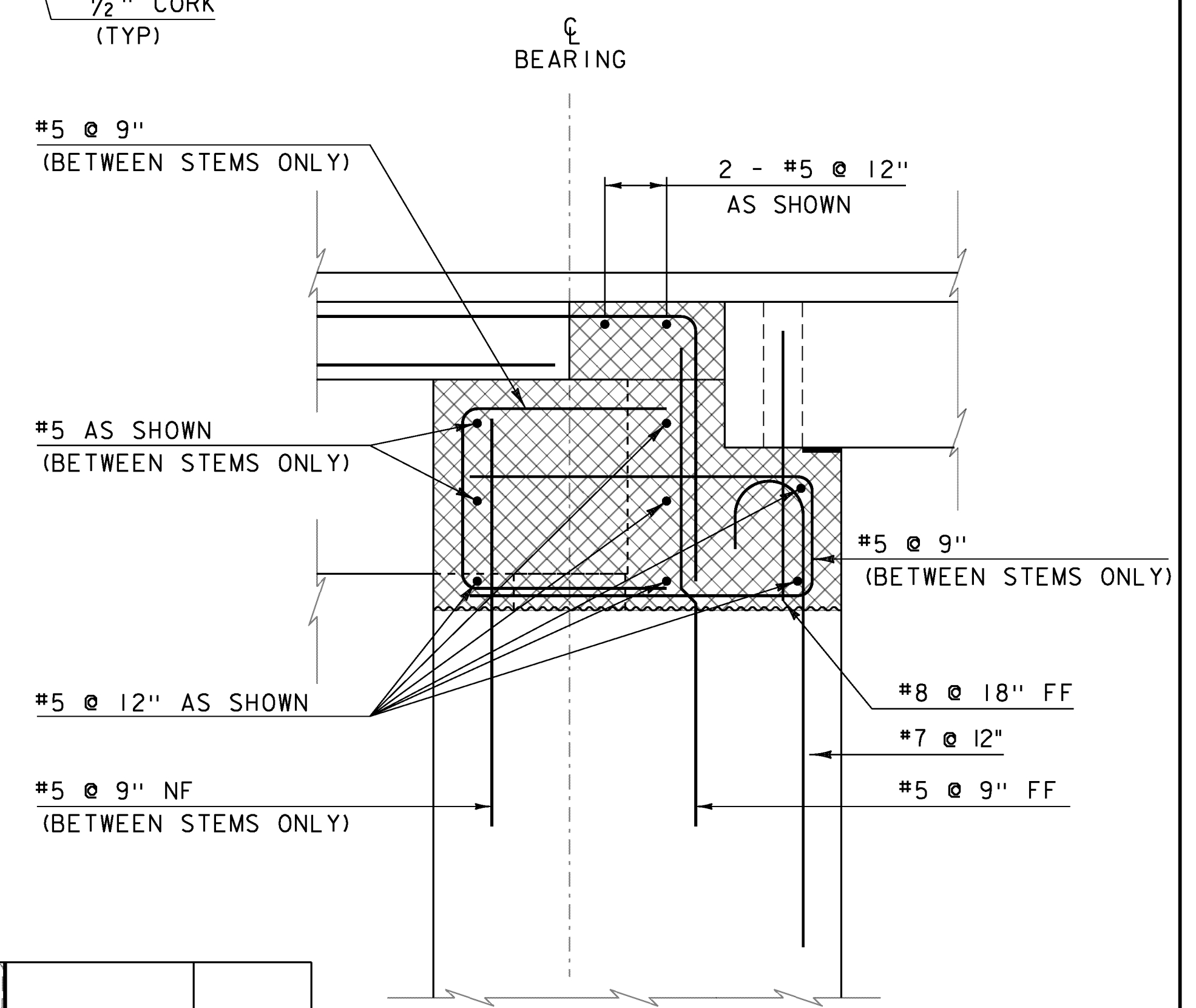


DECK CLOSURE POUR  
REINFORCING PLAN  
SCALE 1/2" = 1'-0

NOTE:  
 NF = NEAR FACE  
 FF = FAR FACE  
 EF = EACH FACE  
 ▲ = CUT TO FIT IN FIELD  
 3" CLEAR, UNLESS OTHERWISE  
 SPECIFIED ON THE PLANS.  
 2'-7" BAR LAP UNLESS OTHERWISE  
 SPECIFIED ON THE PLANS.



DECK CLOSURE POUR  
REINFORCING ELEVATION  
SCALE 1/2" = 1'-0



REINFORCING TYPICAL  
SCALE 1" = 1'-0

PROJECT NAME: BARNARD	PLOT DATE: 17-SEP-2013
PROJECT NUMBER: ER BR F 024(39)	DRAWN BY: J. SALVATORI
FILE NAME: sl0c410sub.dgn	CHECKED BY: W. LAMMER
PROJECT LEADER: K. HIGGINS	SHEET 25 OF 39
DESIGNED BY: W. LAMMER	
DECK CLOSURE POUR	