

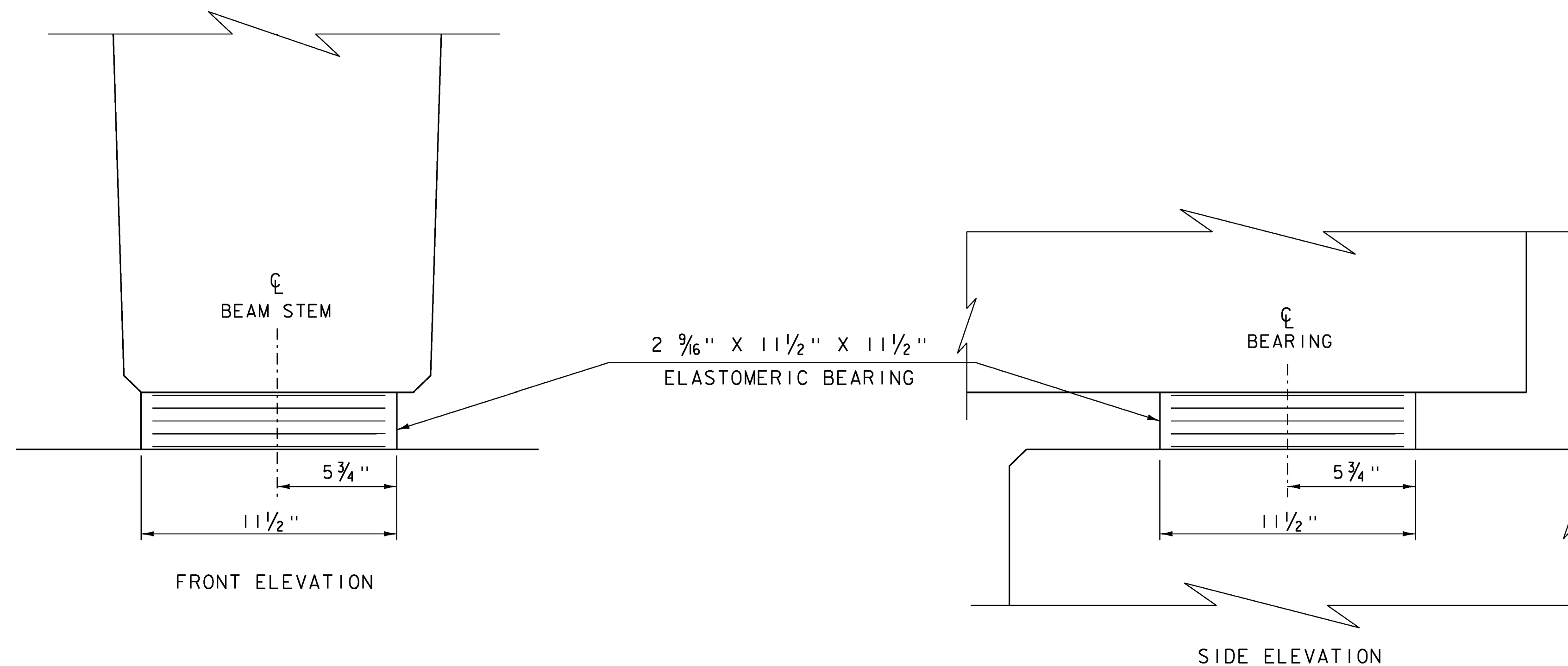
ELASTOMERIC BEARING DETAIL

SCALE 3" = 1'-0"

- * 2 - 1/8" EXTERIOR LAYERS OF ELASTOMER
- 4 - 1/2" INTERIOR LAYERS OF ELASTOMER
- 5- 1/16" STEEL REINFORCING PLATES

BEARING NOTES

1. BEARINGS SHALL CONFORM TO THE APPLICABLE SUBSECTIONS OF SECTIONS 531 AND 731.
2. ALL REINFORCEMENT BETWEEN LAYERS OF ELASTOMER SHALL BE STEEL MEETING THE REQUIREMENTS OF SUBSECTION 714.02. ALL INTERNAL STEEL PLATES SHALL BE SAND BLASTED AND FREE OF COATINGS, RUST AND MILL SCALE. THE PLATES SHALL BE FREE OF SHARP EDGES AND BURRS.
3. STEEL REINFORCED ELASTOMERIC BEARINGS SHALL HAVE A MINIMUM 1/8" EDGE SEAL OF ELASTOMER INTEGRAL WITH BEARING OVER ALL INTERNAL PLATES.
4. THE ELASTOMER WAS DESIGNED WITH A SHEAR MODULUS OF 100 PSI +/- 15%
5. THE CONCRETE UNDER THE BEARING DEVICE SHALL BE LEVEL.
6. THE CONTRACTOR IS ADVISED TO HAVE A MINIMUM OF 24 - 1/4"x12 1/2"x12 1/2" GALVANIZED STEEL SHIMS AVAILABLE FOR USE FOR ELEVATION ADJUSTMENTS UPON THE SETTING OF THE SUPERSTRUCTURE UNITS. THE SHIMS SHALL BE FABRICATED ACCORDING TO SECTION 531 AND SHALL BE INCLUDED IN THE UNIT BID PRICE FOR ITEM 531.17,"BEARING DEVICE ASSEMBLY, STEEL REINFORCED ELASTOMERIC PAD".



ELASTOMERIC BEARING DETAILS

SCALE 3" = 1'-0"

PROJECT NAME: BARNARD	PLOT DATE: 29-AUG-2013
PROJECT NUMBER: ER BRF 0241(39)	DRAWN BY: J. SALVATORI
FILE NAME: s10c410brg.dgn	CHECKED BY: W. LAMMER
PROJECT LEADER: K. HIGGINS	SHEET 19 OF 39
DESIGNED BY: W. LAMMER	
BEARING DETAILS	