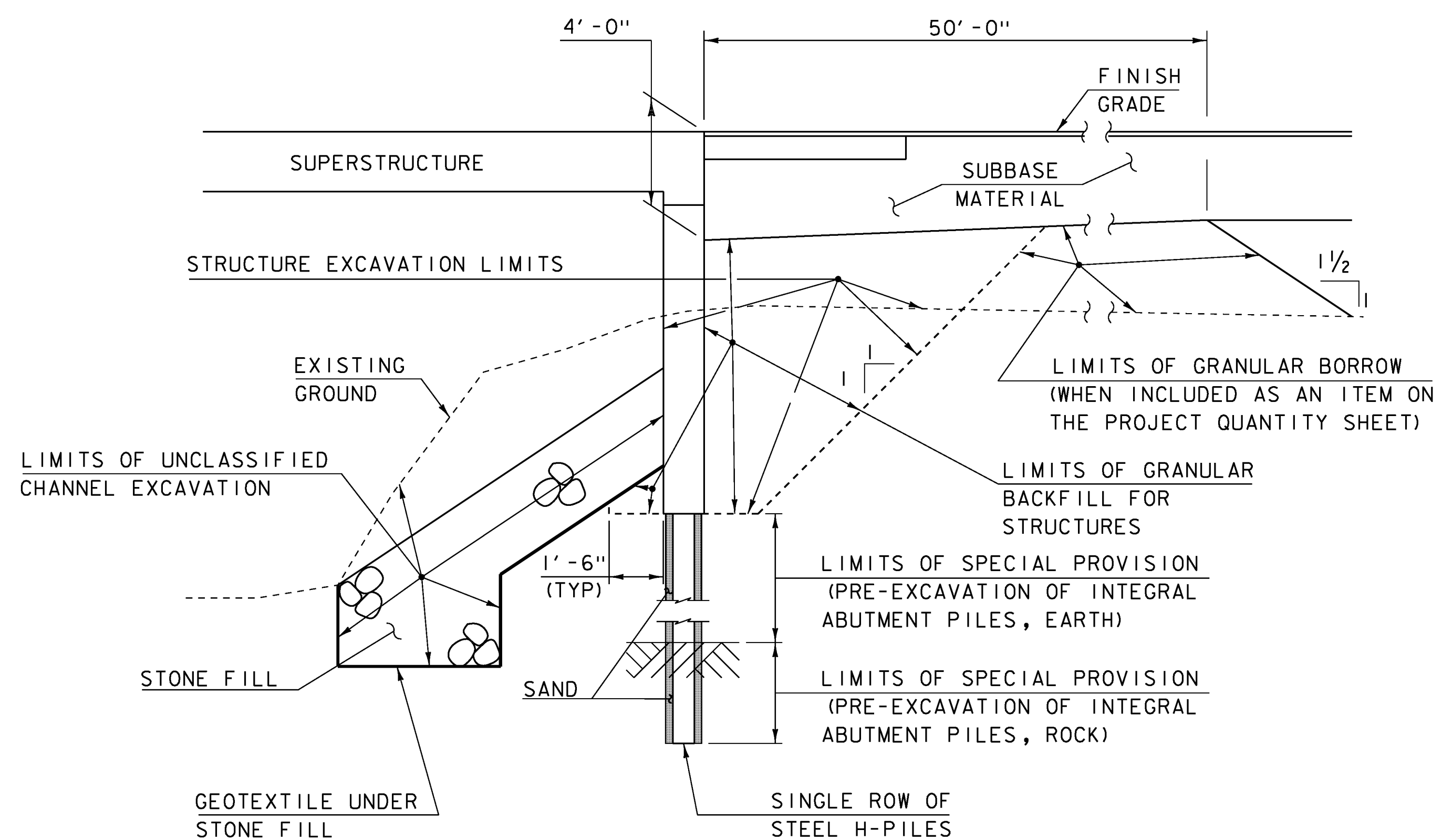
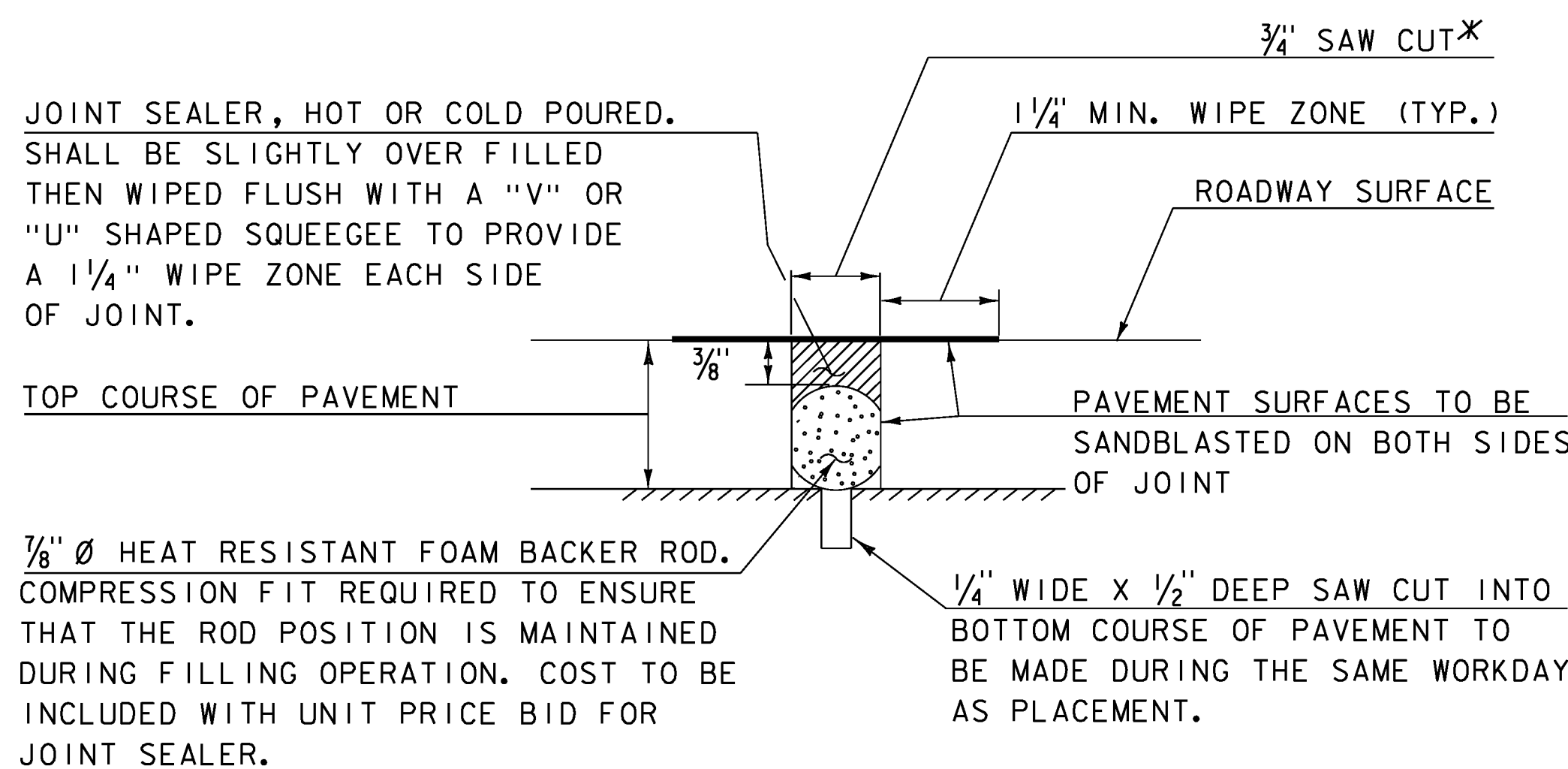


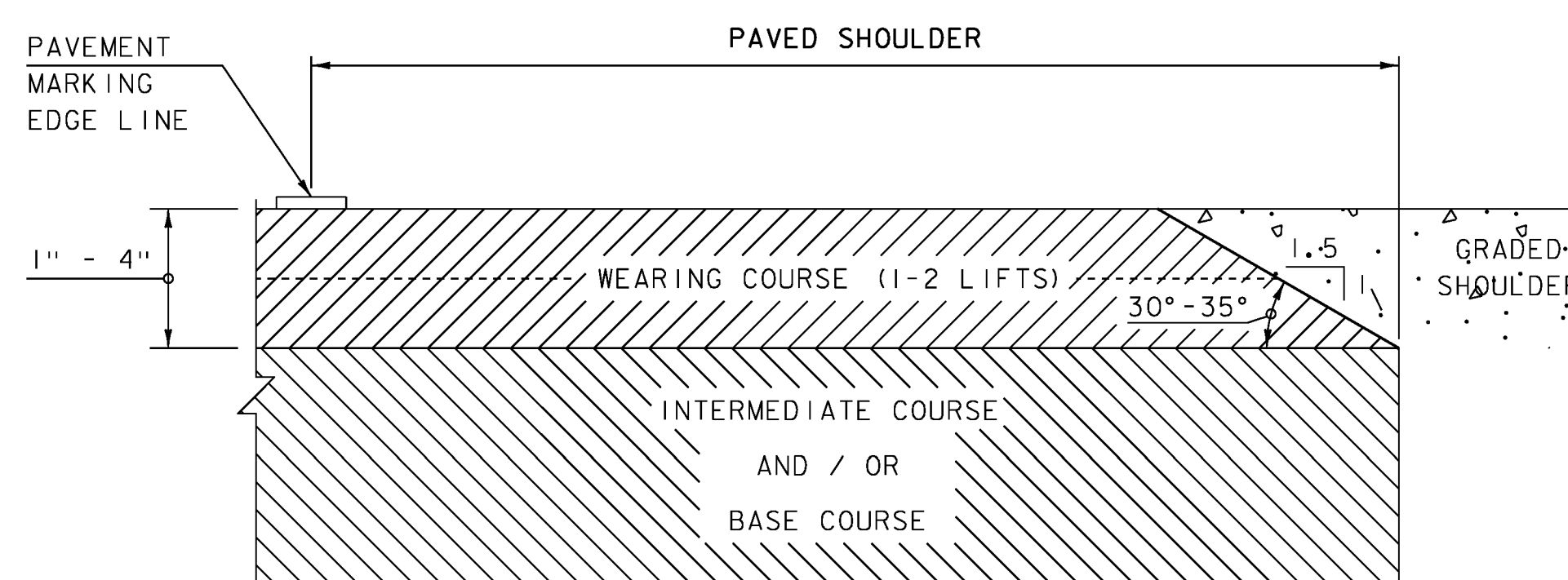
EARTHWORK SECTION (ABUTMENT #1)
NOT TO SCALE



EARTHWORK SECTION (ABUTMENT #2)
NOT TO SCALE

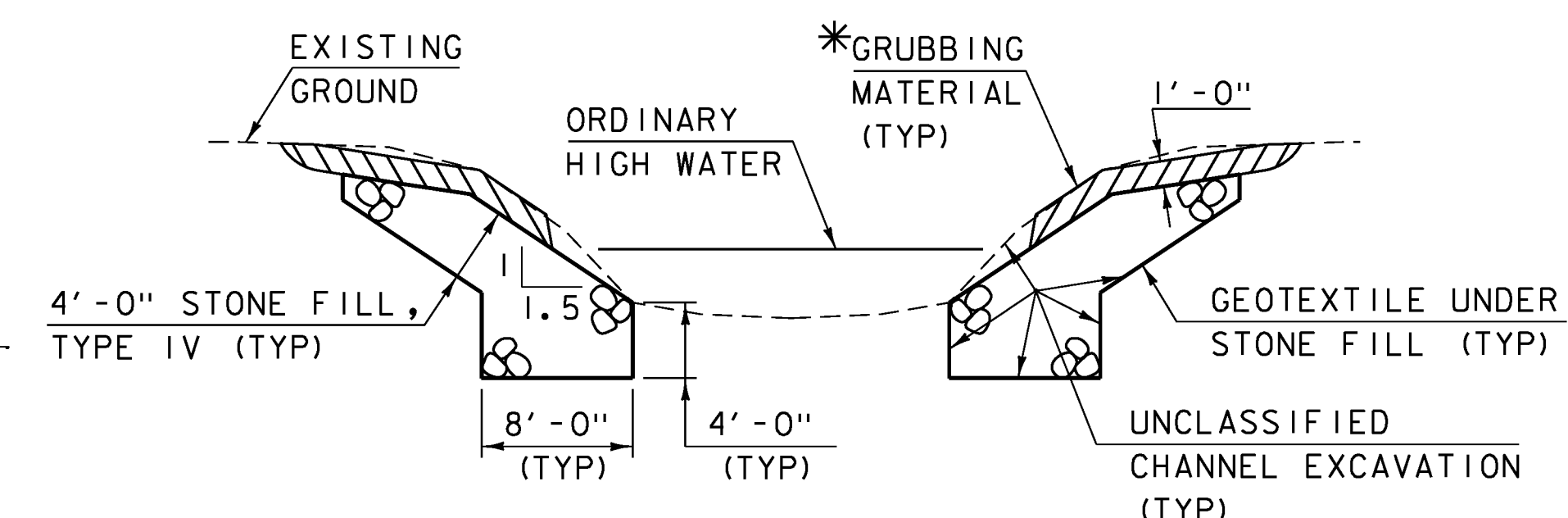


SAWED PAVEMENT JOINT DETAIL
(NOT TO SCALE)



SAFETY EDGE DETAIL
NOT TO SCALE

NOTE: LEVELING COURSE MAY INCLUDE THE "SAFETY EDGE" AT THE CONTRACTOR'S CHOICE.



TYPICAL CHANNEL SECTION
(NOT TO SCALE)

*GRUBBING MATERIAL SHALL NOT BE PLACED ON THE STONE FILL IN THE AREA UNDER THE BRIDGE. WHENEVER CHANNEL SLOPE INTERSECTS ROADWAY SUBBASE, GRUBBING MATERIAL SHALL BEGIN AT THE BOTTOM OF SUBBASE.

*JOINT IS TO BE LOCATED ACCURATELY BY STRING LINING, OR OTHER MEANS, PRIOR TO PAVING, SO THAT THE SAW CUTS WILL BE MADE DIRECTLY OVER THE END OF CONCRETE DECK. JOINT SHALL BE CUT DRY IN A SINGLE PASS AND BE SEALED WITHIN 24 HOURS OR PRIOR TO EXPOSURE TO TRAFFIC. JOINT SHALL BE CLEANED PRIOR TO APPLYING THE JOINT SEALER.

PROJECT NAME: BARNARD	PLOT DATE: 17-SEP-2013
PROJECT NUMBER: ER BR F 0241(39)	DRAWN BY: J. SALVATORI
FILE NAME: I0c410+yp.dgn	CHECKED BY: W. LAMMER
PROJECT LEADER: K.HIGGINS	SHEET 8 OF 39
DESIGNED BY: J. SALVATORI	
TYPICAL SECTIONS 2	