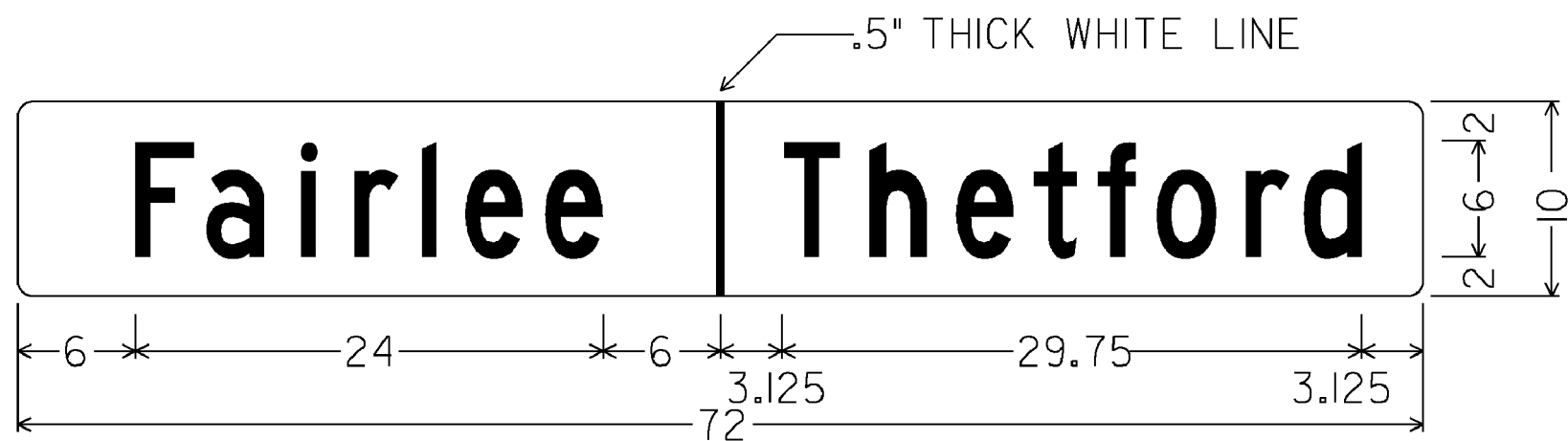


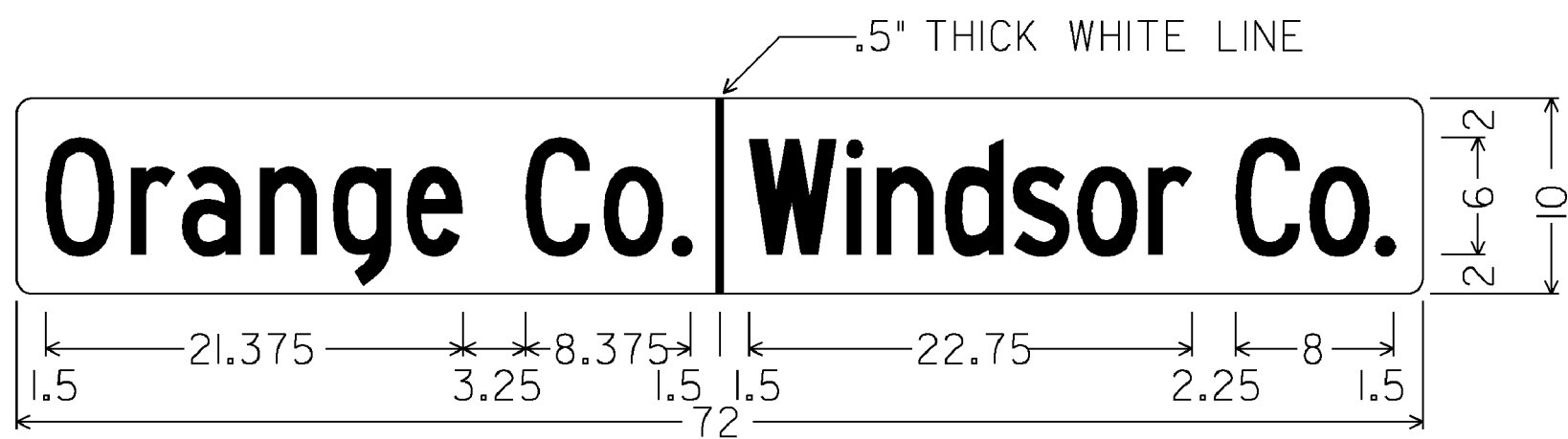
1.500" RADIUS, NO BORDER, WHITE ON GREEN
 [Thetford] C FONT
 [Norwich] C FONT

VD-024



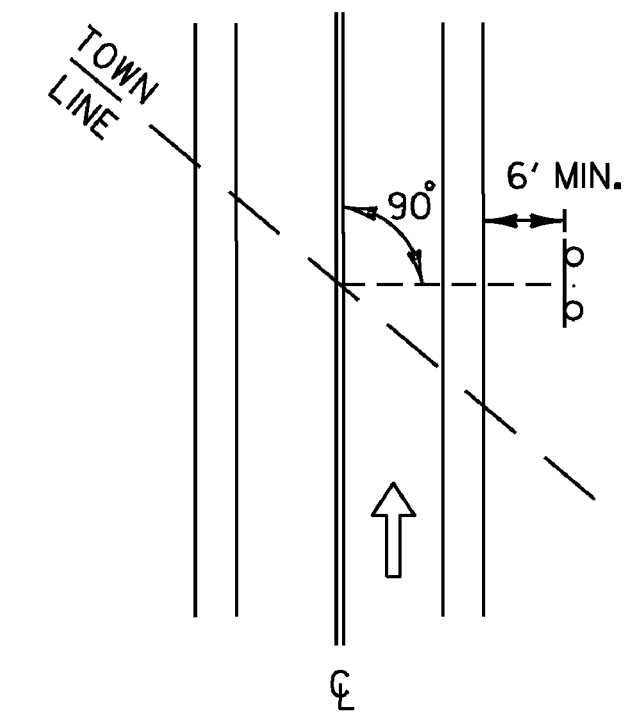
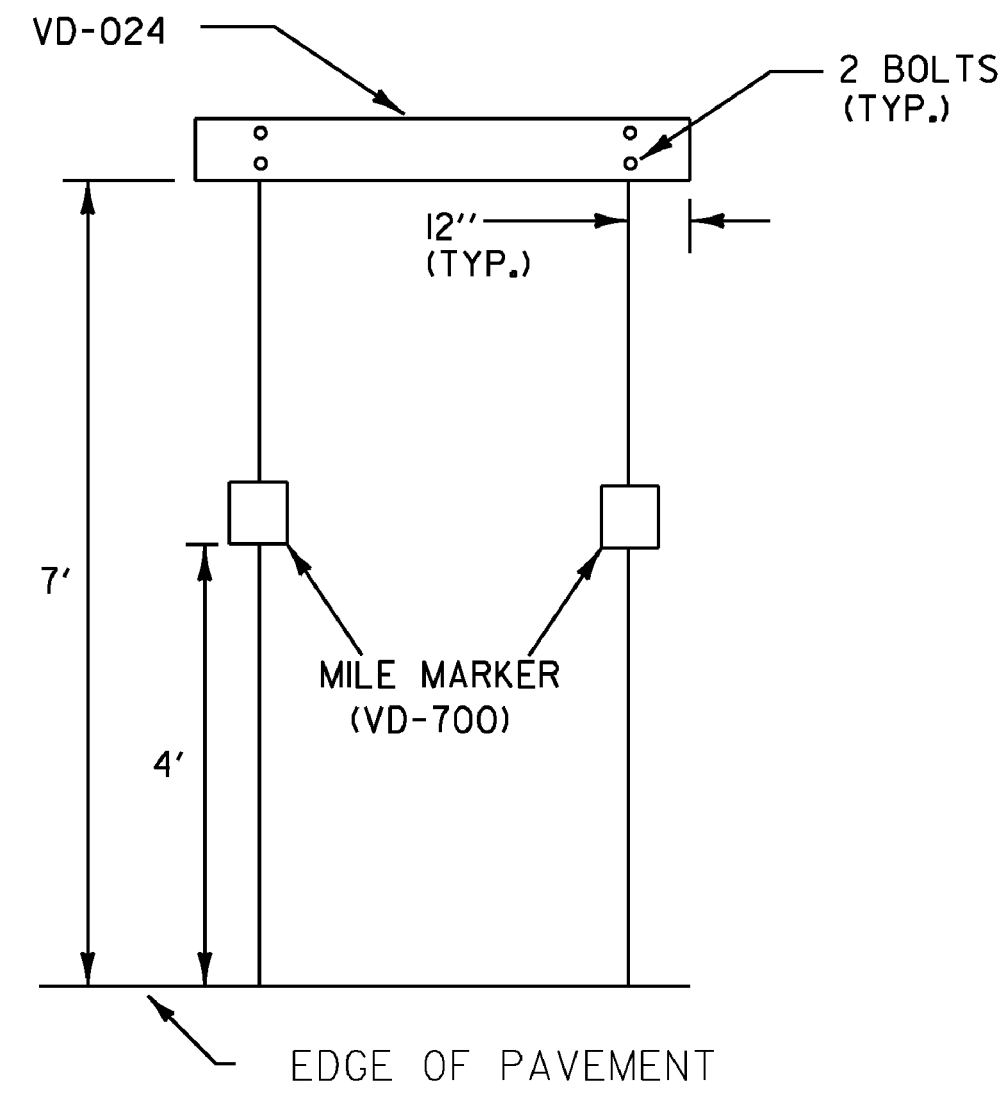
1.500" RADIUS, NO BORDER, WHITE ON GREEN
 [Fairlee] C FONT
 [Thetford] C FONT

VD-024



1.500" RADIUS, NO BORDER, WHITE ON GREEN
 [Orange Co.] C FONT, SPECIFIED LENGTH
 [Windsor Co.] C FONT, SPECIFIED LENGTH

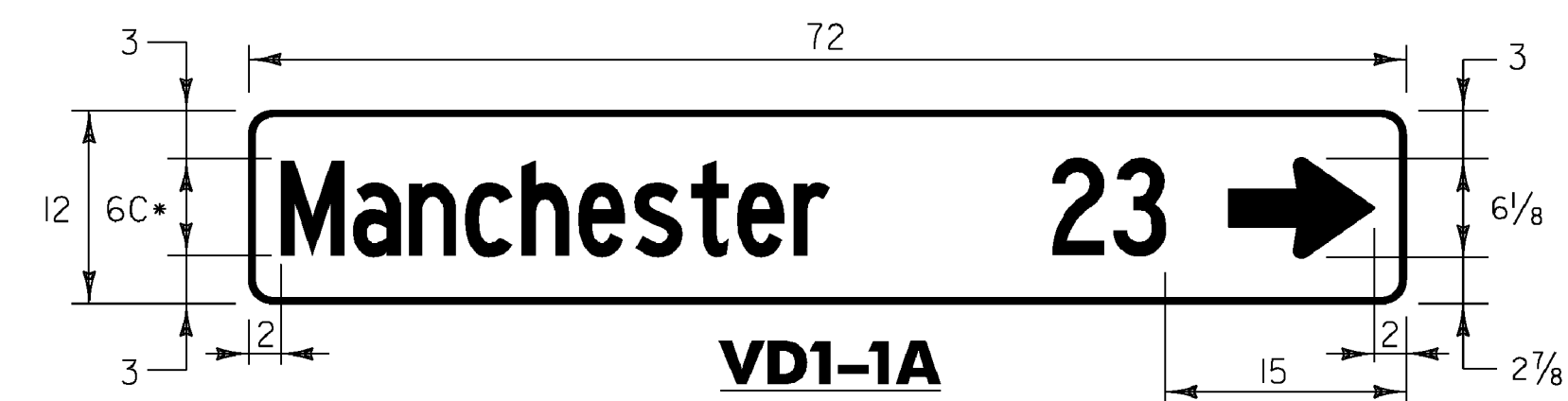
VD-025



THE SIGN SHALL BE MOUNTED PARALLEL WITH THE ROADWAY, NORMALLY ON RIGHT SIDE TRAVELING WEST TO EAST OR SOUTH TO NORTH.

WHEN CROSSING COUNTY BOUNDARIES AN ADDITIONAL COUNTY LINE SIGN (VD-025) SHALL BE MOUNTED BELOW THE TOWN LINE SIGN (VD-024) MAINTAINING A SEVEN FOOT CLEARANCE.

NOT TO SCALE



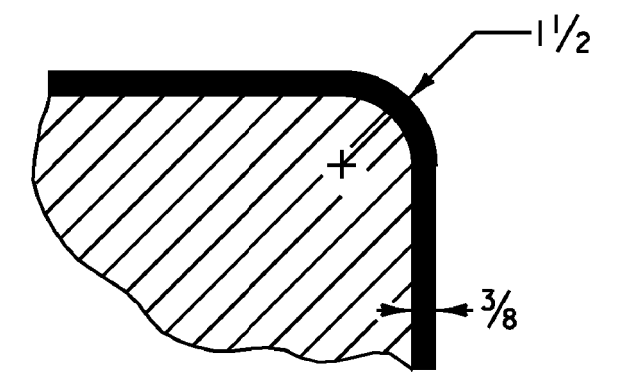
• SEE NOTE 2 BELOW:

**STANDARD DESTINATION SIGN NOTES
 VD1-1, VD1-1A, VD2-1**

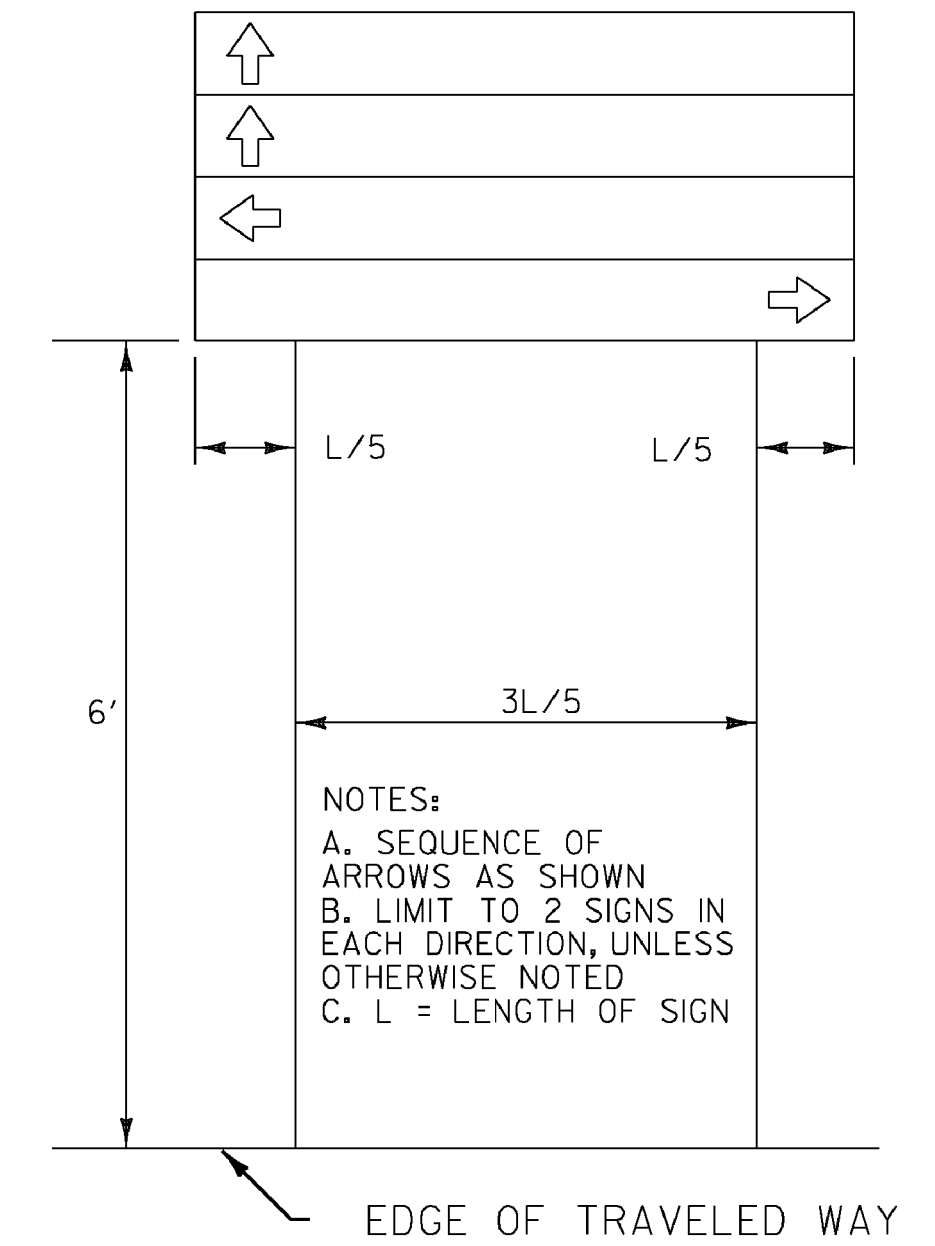
1.) THE DESTINATION SIGNS SHOWN ON THIS SHEET SHALL HAVE WHITE RETROREFLECTIVE ASTM TYPE III OR IV TEXT, ARROWS AND BORDERS ON A GREEN RETROREFLECTIVE ASTM TYPE III OR IV BACKGROUND.

2.) USE THE LARGEST LETTER / THICKEST FONT AVAILABLE THAT WILL SATISFY THE MINIMUM SPACING REQUIREMENTS, AS SHOWN IN THE DETAILS ABOVE; i.e. IF A 6" SERIES C LETTER DOES NOT WORK, DUE TO THE LENGTH OF THE WORD, USE A 6" SERIES B LETTER. IF A 6" SERIES B LETTER DOES NOT WORK, USE A 5" SERIES C. USE NO LESS THAN 80% KERNING.

SEE C.O.D./S.A. #DATED 4-10-12 FOR MODIFICATION TO THIS DETAIL

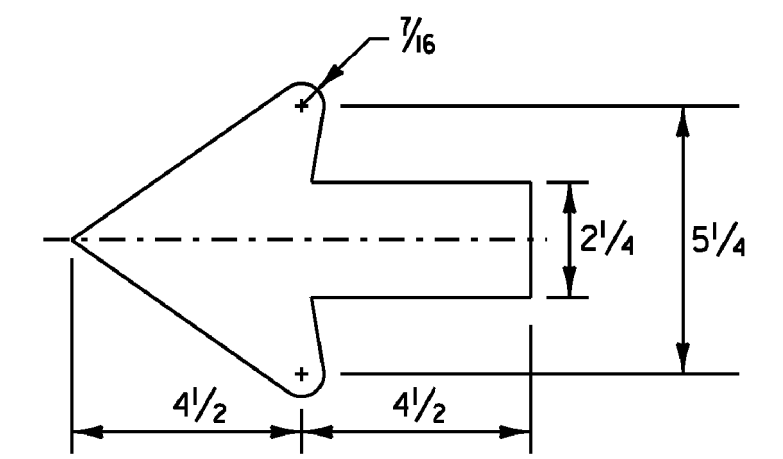


**BORDER DETAIL
 TRIM CORNERS**



DESTINATION ASSEMBLY

NOTES:
 A. SEQUENCE OF ARROWS AS SHOWN
 B. LIMIT TO 2 SIGNS IN EACH DIRECTION, UNLESS OTHERWISE NOTED
 C. L = LENGTH OF SIGN



STANDARD SHS 2.25" ARROW

ALL DIMENSIONS SHOWN IN INCHES, EXCEPT WHERE NOTED.

PROJECT NAME: NORWICH - FAIRLEE	FILE NAME: IOC334.SD.1	PLOT DATE: 04-MAY-2011
PROJECT NUMBER: STPG SIGN (34)	PROJECT LEADER: A. GAMBLE	DRAWN BY: D. CROSSLEY
	DESIGNED BY: D. CROSSLEY	CHECKED BY: A. GAMBLE
	SIGN DETAILS I	SHEET 4 OF 65