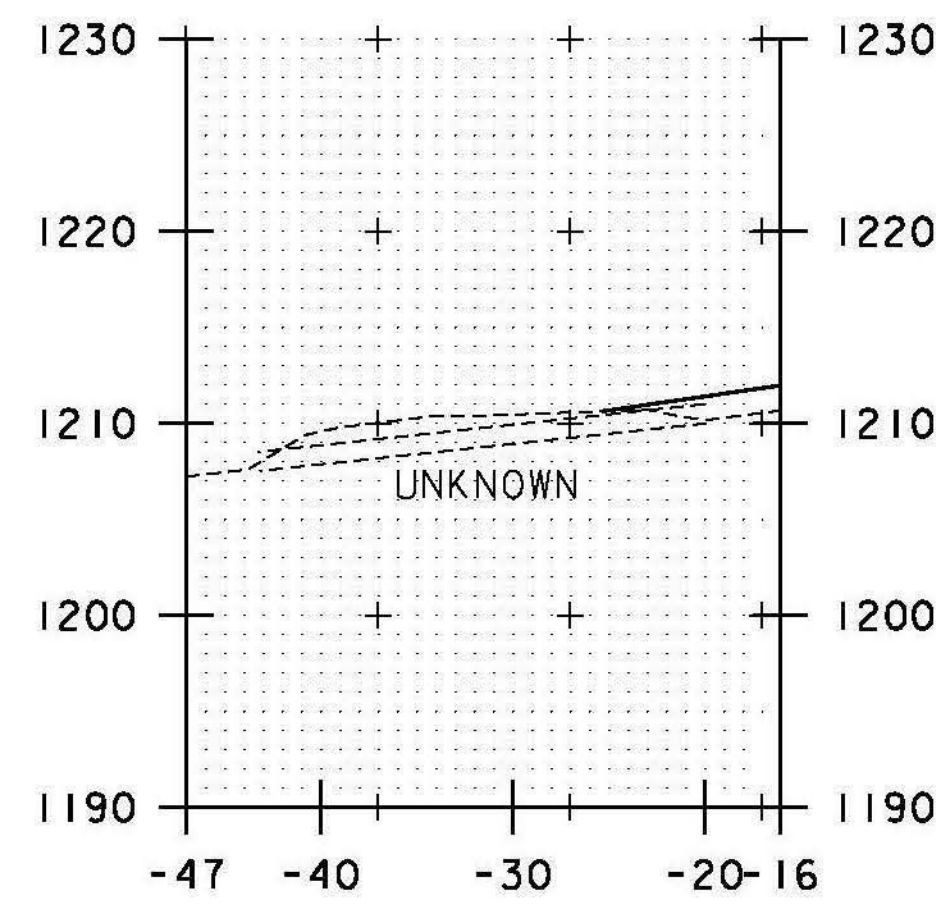
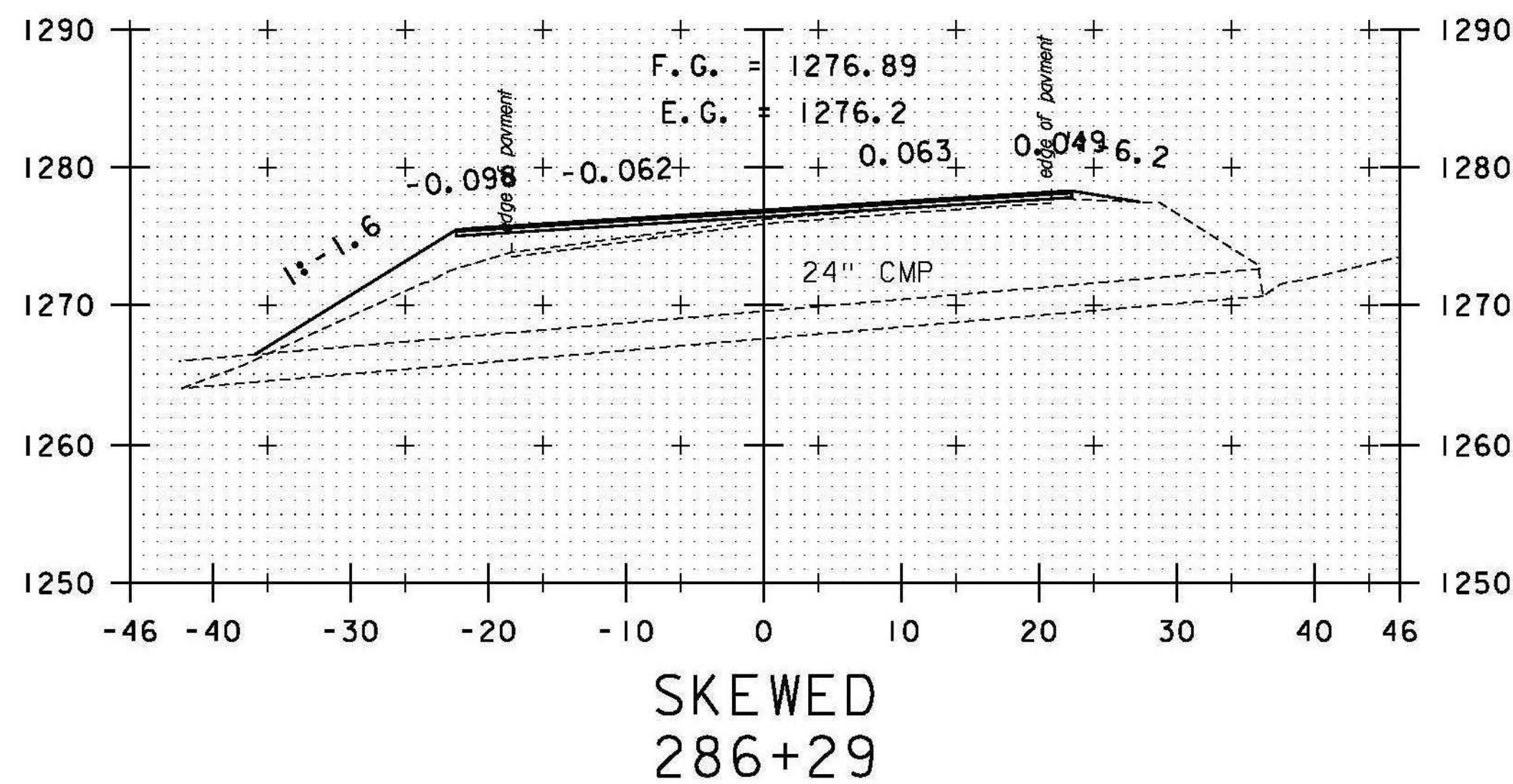


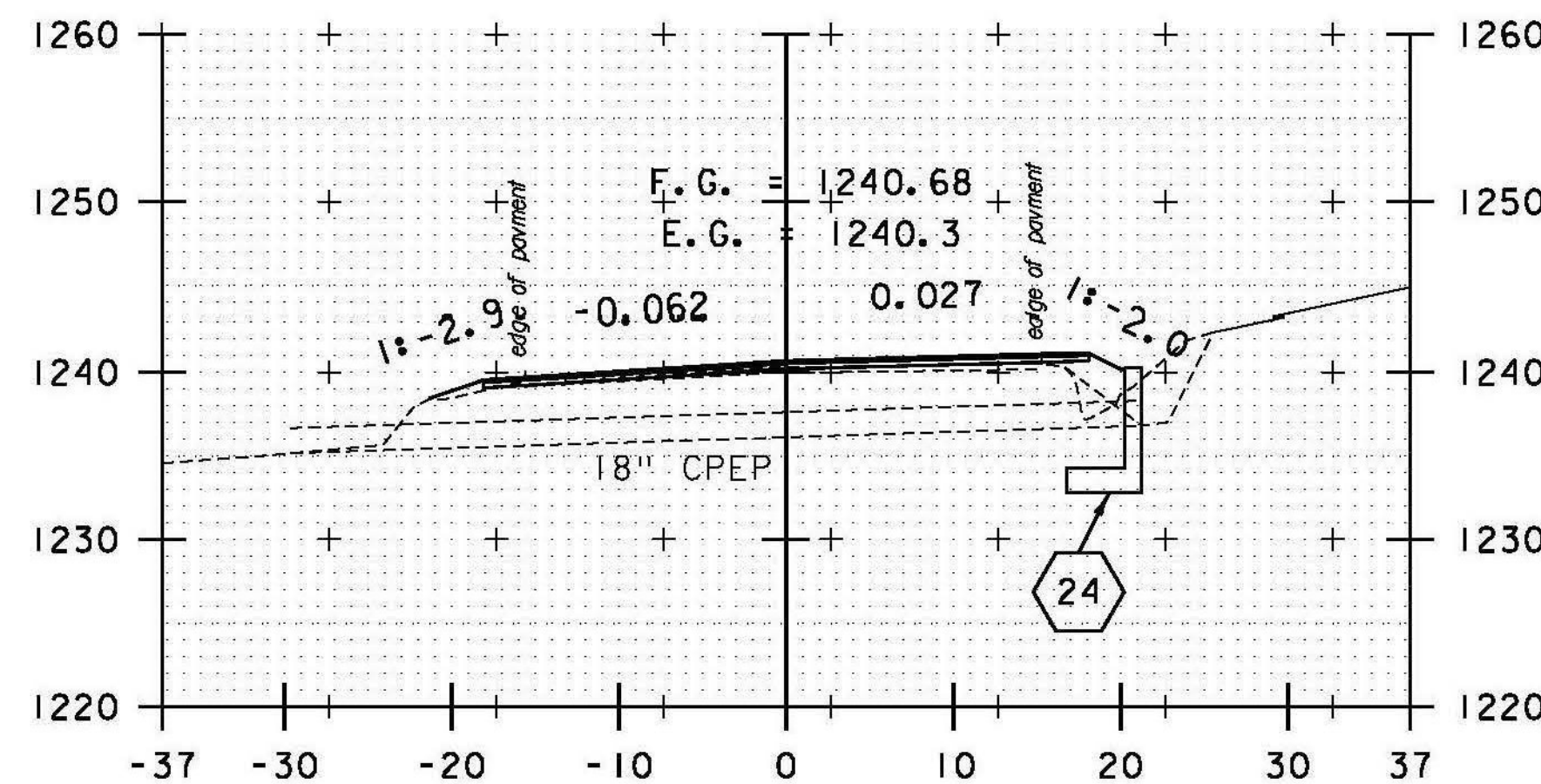
23 STA. 289+22.00 RT 20.00' TO  
STA. 289+44.00 RT 20.00'  
REMOVE EXISTING 12" CMP  
INSTALL 12" CPEP (23'-0")  
INV. IN = 1251.00'  
INV. OUT = 1250.25'



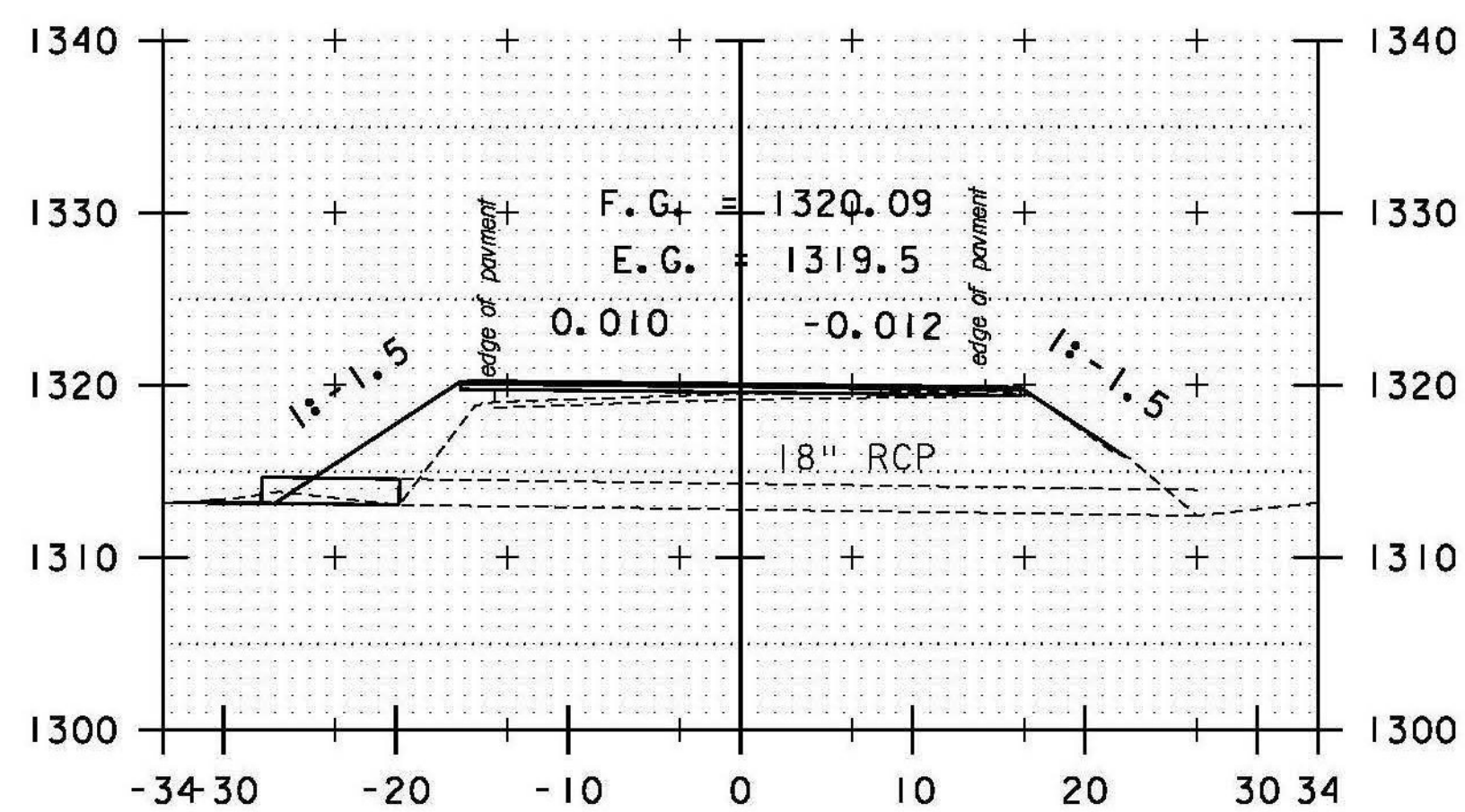
DRIVE LT  
294+35



SKEWED  
286+29

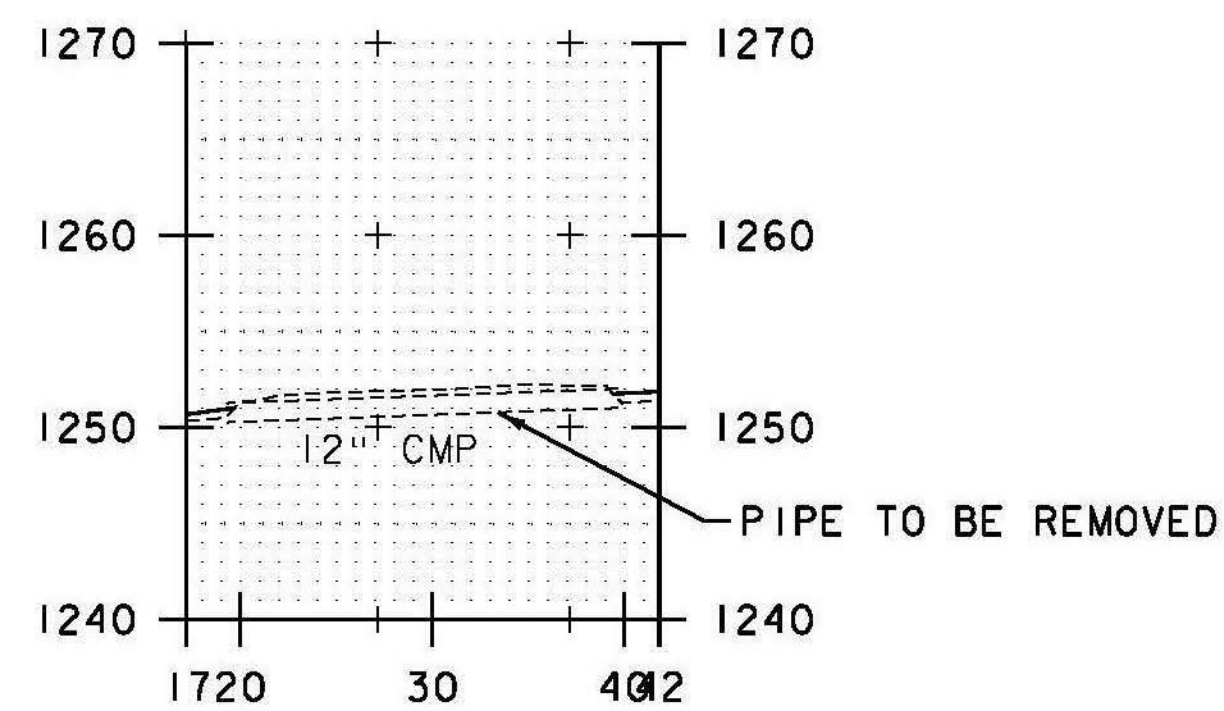


SKEWED  
290+72

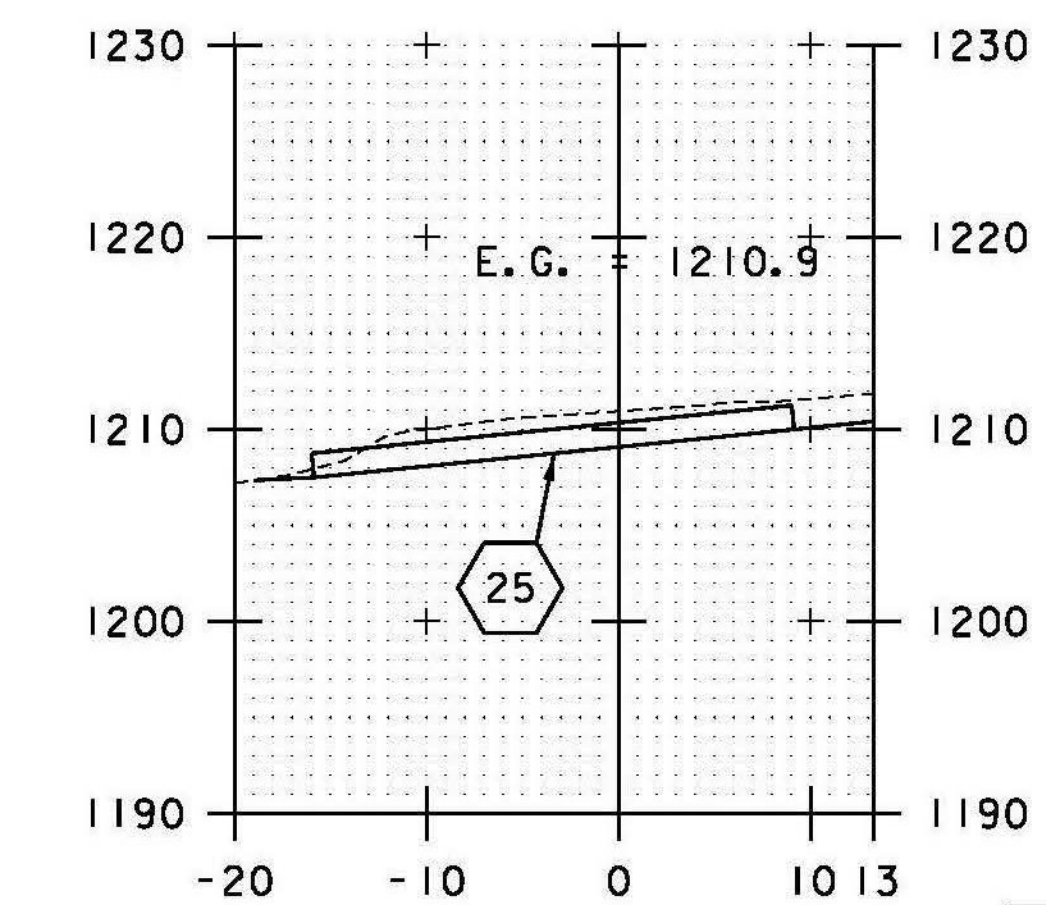


SKEWED  
277+80

22 STA. 277+75.30 LT 27.37' TO  
STA. 277+76.70 LT 19.49'  
REMOVE EXISTING HEADWALL  
EXTEND 18" RCP (8'-0")  
INV. IN = 1313.16'



DRIVE RT  
289+46

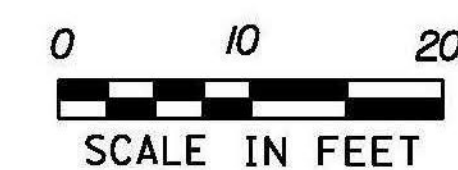


DRIVE LT  
294+67

25 STA. 294+38.00 LT 20.00' TO  
STA. 294+63.00 LT 20.00'  
REMOVE UNKNOWN PIPE  
INSTALL 15" CPEP (25'-0")  
INV. IN = 1210.00'  
INV. OUT = 1207.50'

DATUM  
VERTICAL NAVD 88  
HORIZONTAL NAD 83

STA. 277+80 TO STA. 294+67



PROJECT NAME: RANDOLPH  
PROJECT NUMBER: STP 2932 (1)

FILE NAME: z10c270.dgn  
PROJECT LEADER: C. LATHROP  
DESIGNED BY: B. BRESLEND  
CULVERT CROSS SECTION SHEET 18

PLOT DATE: 6/5/2014  
DRAWN BY: B. BRESLEND  
CHECKED BY: C. LATHROP  
SHEET 265 OF 276