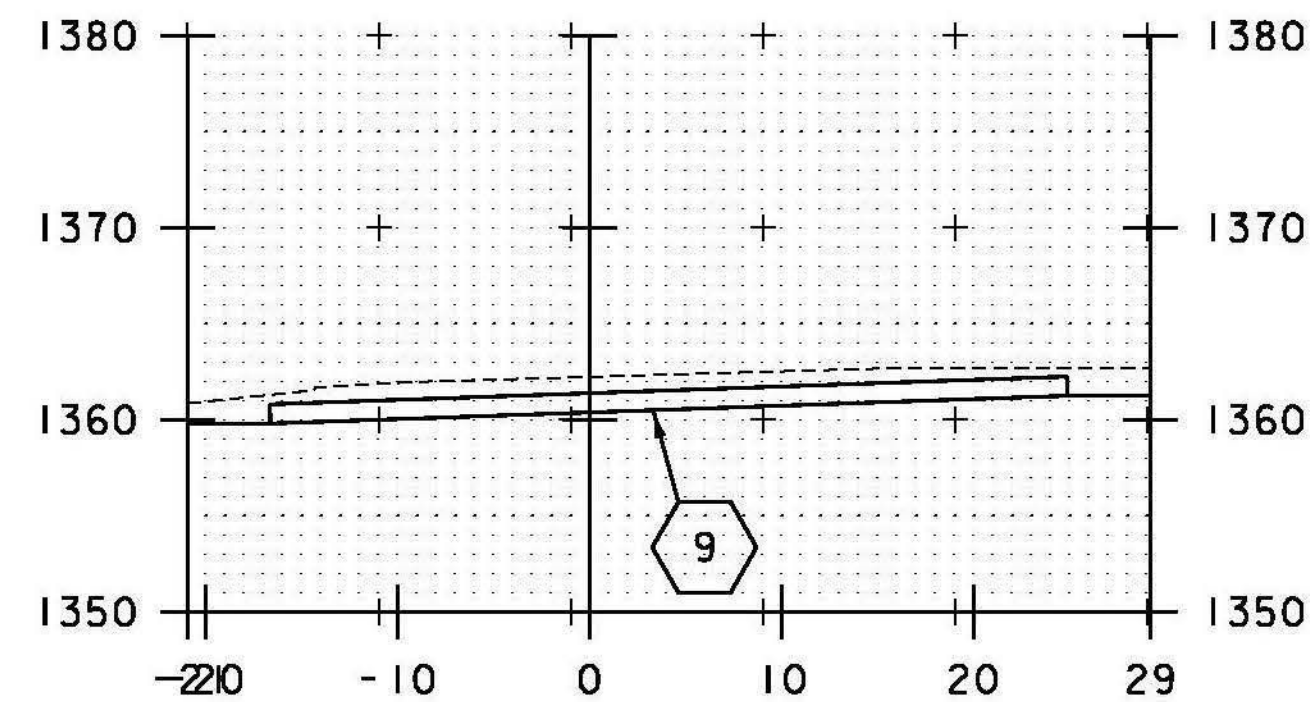
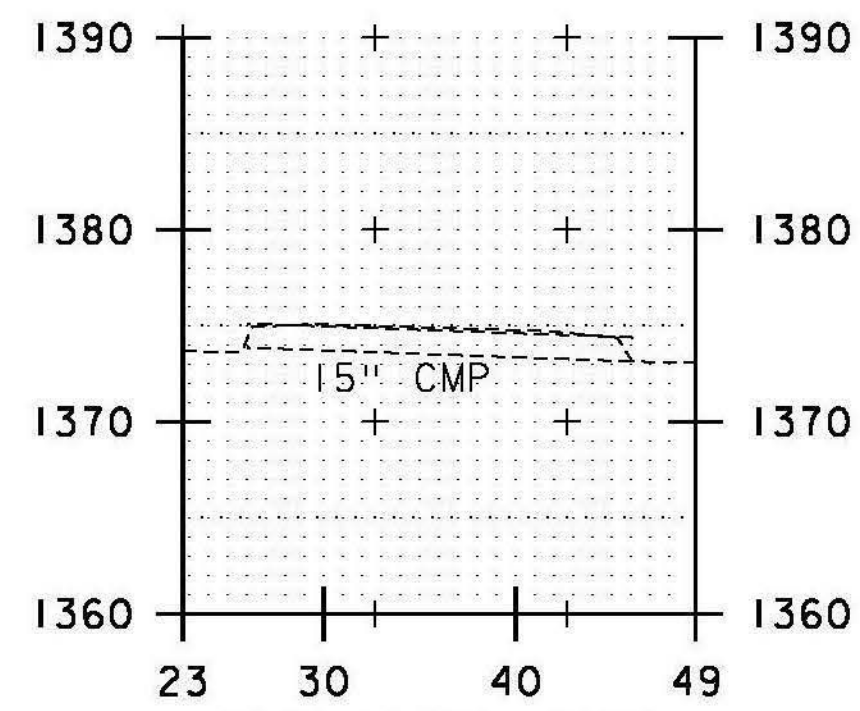


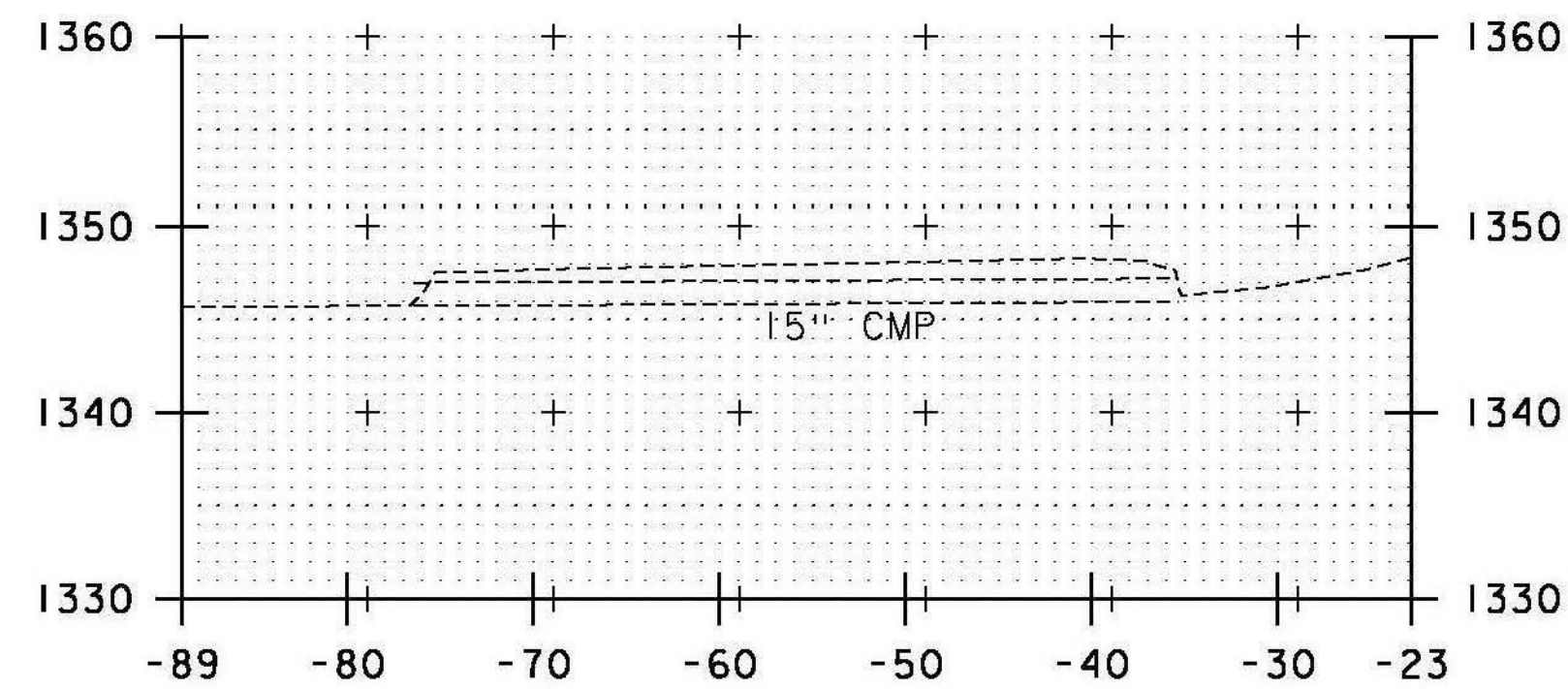
9 STA. 173+86.00 LT 21.00' TO
 STA. 174+28.00 LT 21.00'
 REMOVED EXISTING 12" CMP
 INSTALL 12" CPEP (41'-6")
 INV. IN = 1361.25'
 INV. OUT = 1359.80'



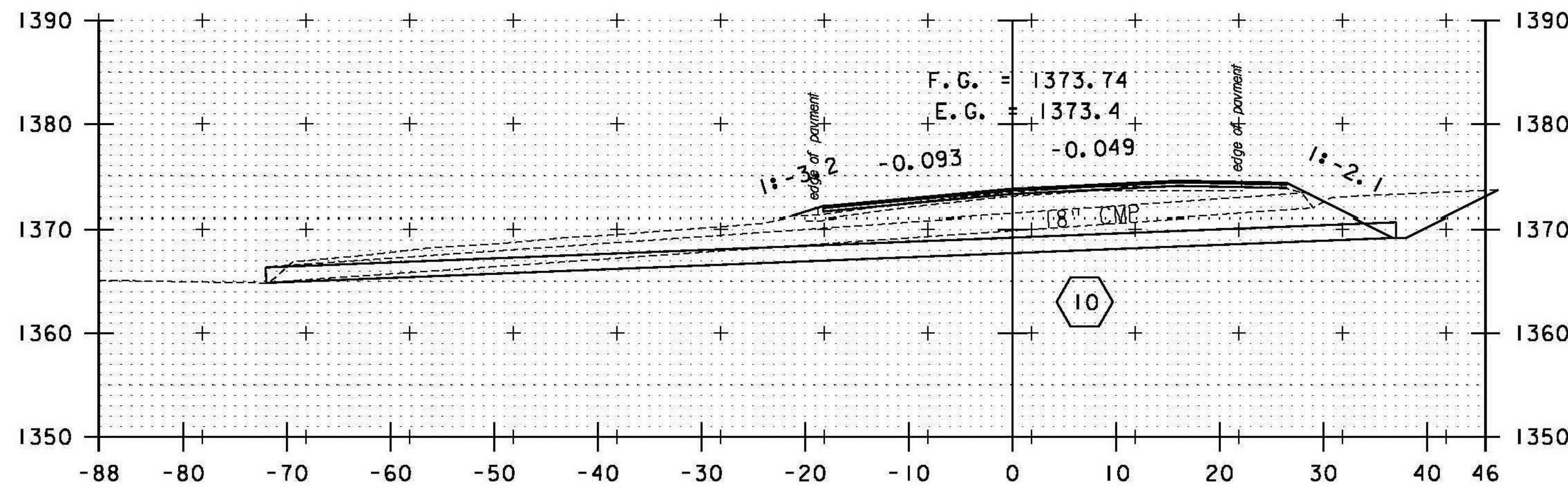
DRIVE LT
173+82



DRIVE RT
176+63

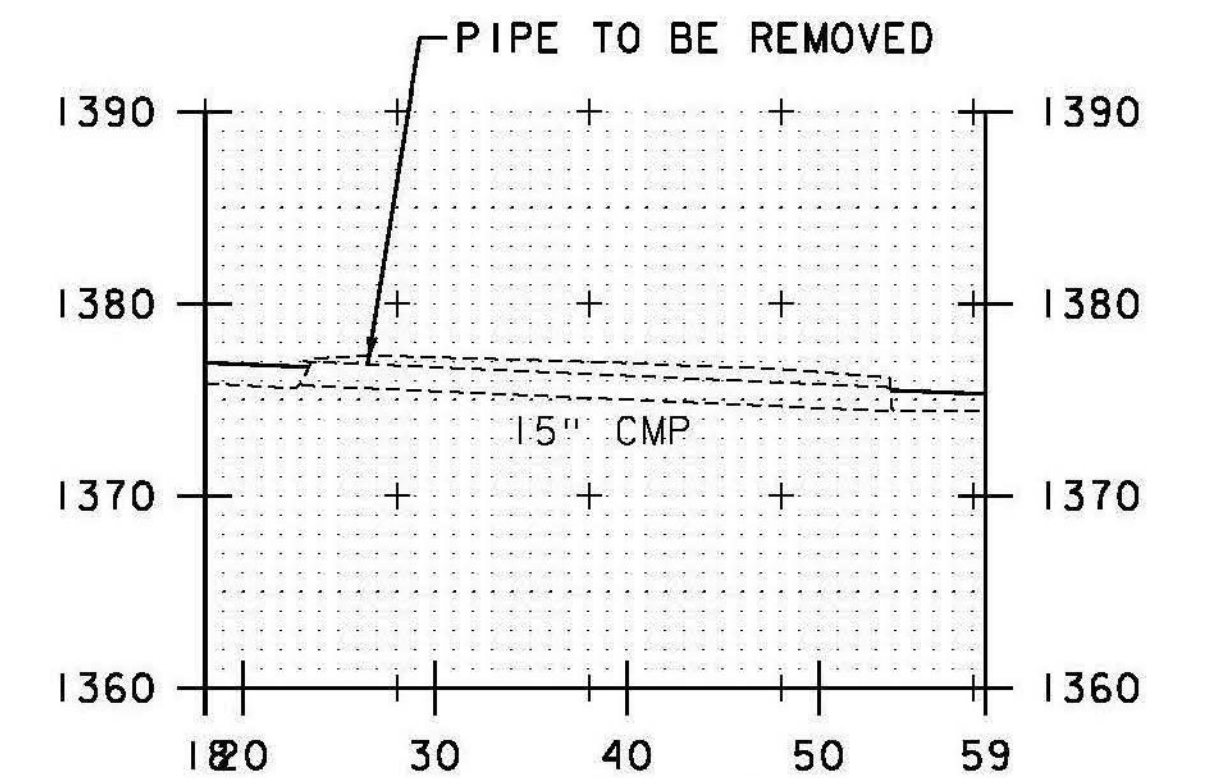


DRIVE LT
169+91

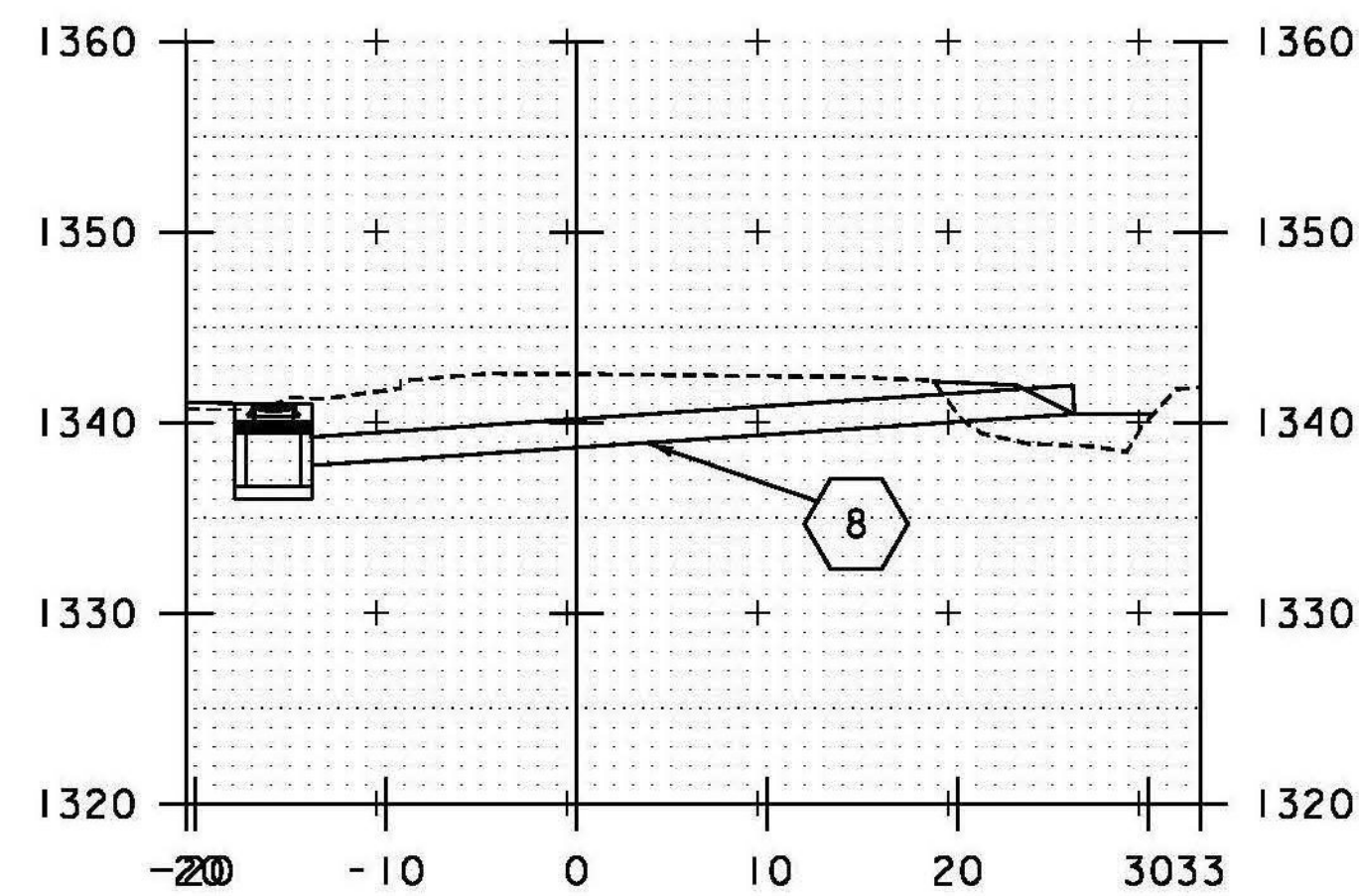


SKewed
176+17

10 STA. 175+22.05 LT 30.24' TO
 STA. 176+25.43 RT 34.47'
 REMOVE EXISTING PIPE
 INSTALL 18" CPEP (106'-0")
 INV. IN = 1370.05'
 INV. OUT = 1364.95'

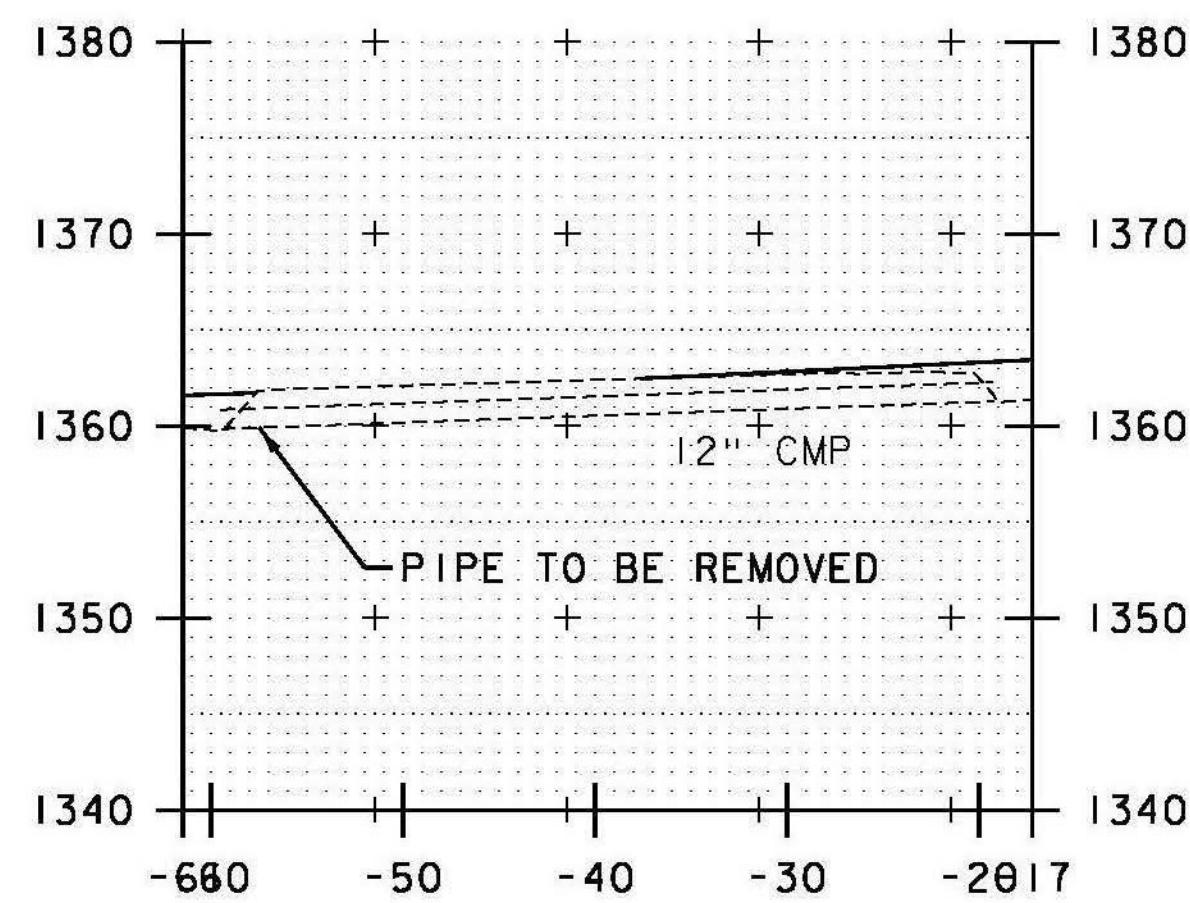


DRIVE RT
177+61



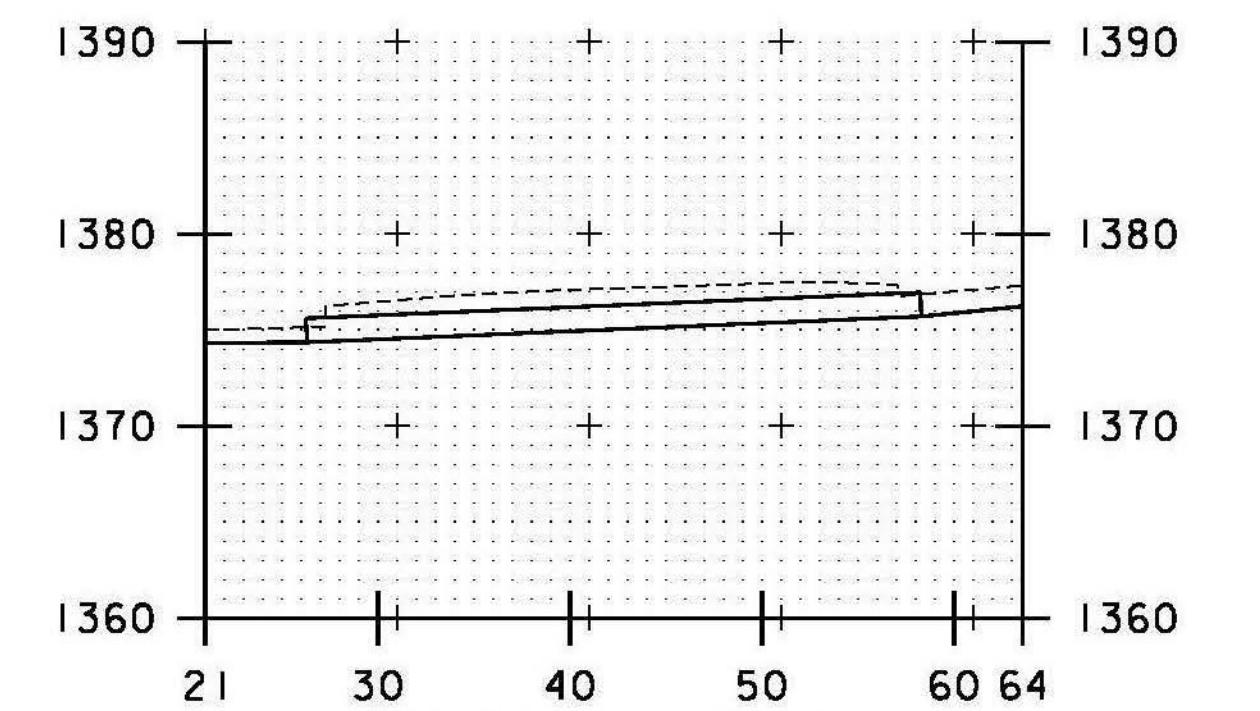
DRIVE LT
167+62

8 STA. 167+15.00 LT 20.50' TO
 STA. 167+55.00 LT 20.50'
 REMOVE EXISTING 18" CMP
 REMOVE EXISTING HEADWALL
 INSTALL 18" CPEP (40'-0")
 INV. IN = 1340.15'
 INV. OUT = 1337.75'



DRIVE LT
174+29

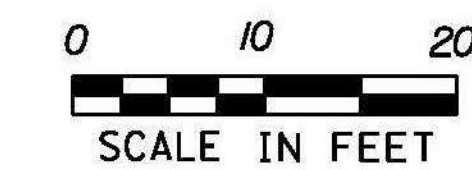
11 STA. 177+25.00 RT 21.00' TO
 STA. 177+57.00 RT 21.00'
 REMOVE EXISTING 15" CMP
 INSTALL 15" CPEP (32'-0")
 INV. IN = 1375.70'
 INV. OUT = 1374.35'



DRIVE RT
177+20

DATUM
 VERTICAL NAVD 88
 HORIZONTAL NAD 83

STA. 167+62 TO STA. 177+61



PROJECT NAME: RANDOLPH
 PROJECT NUMBER: STP 2932 (1)

FILE NAME: z10c270.dgn
 PROJECT LEADER: C. LATHROP
 DESIGNED BY: B. BRESLEND
 CULVERT CROSS SECTION SHEET 15

PLOT DATE: 6/5/2014
 DRAWN BY: B. BRESLEND
 CHECKED BY: C. LATHROP
 SHEET 262 OF 276