

DURABLE 4 INCH WHITE LINE (SEE OPTION ITEMS)
 STA. 392+75 - STA. 397+75 (SOLID LT & RT)

TEMPORARY 4 INCH WHITE LINE, PAINT
 STA. 392+75 - STA. 397+75 (SOLID LT & RT)

DURABLE 4 INCH YELLOW LINE, POLYUREA
 STA. 392+75 - STA. 397+75 (SOLID LT & RT)

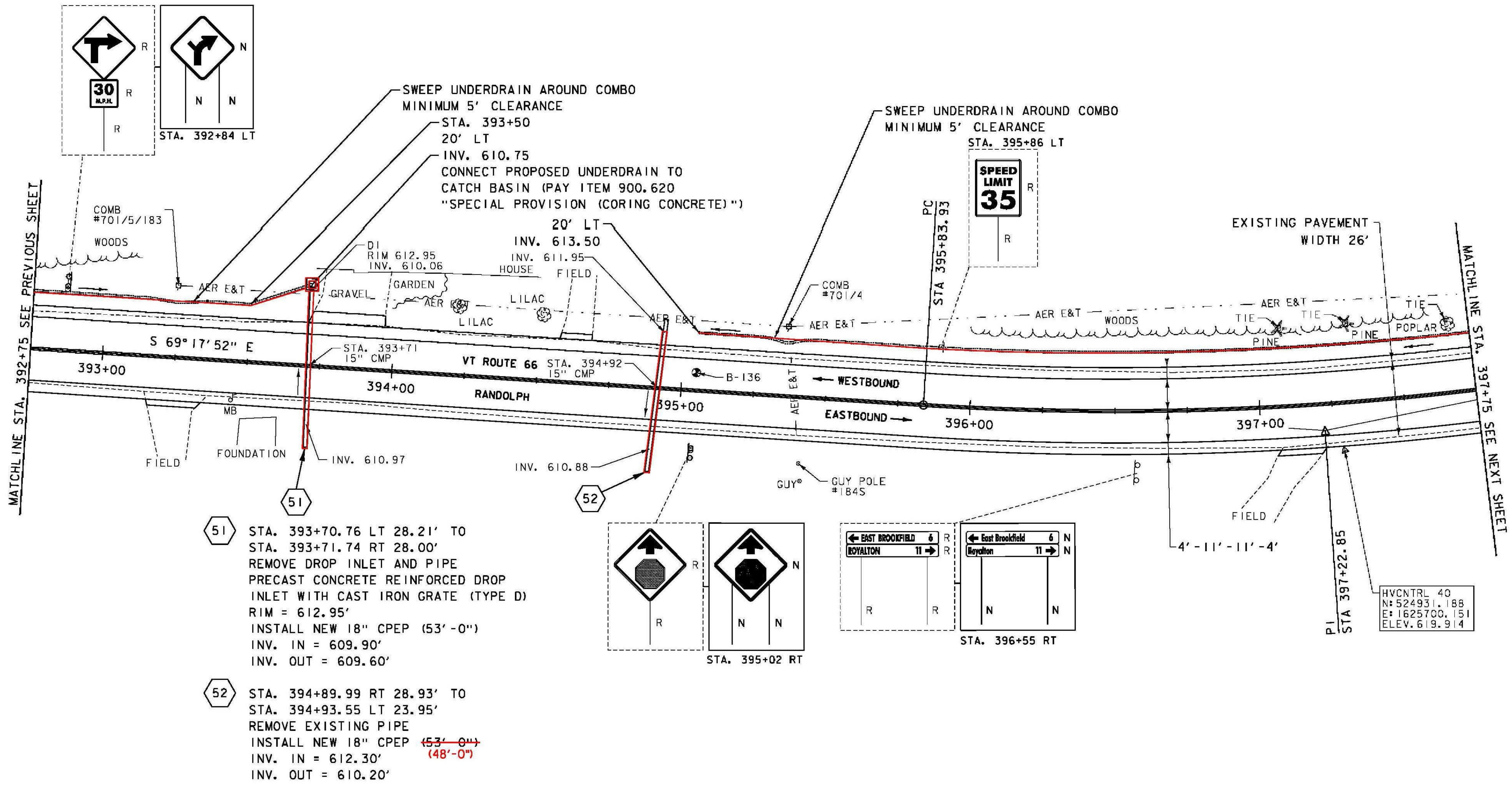
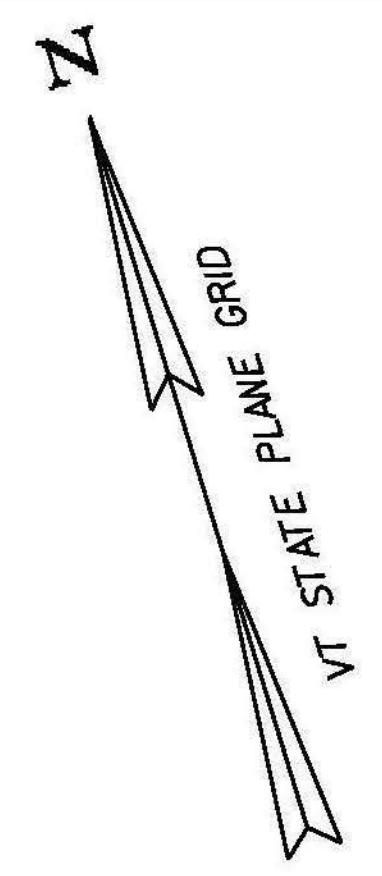
TEMPORARY 4 INCH YELLOW LINE, PAINT
 STA. 392+75 - STA. 397+75 (SOLID LT & RT)

6 INCH UNDERDRAIN PIPE
 392+77 STA. 392+75 - STA. 393+71 LT
 STA. 395+05 - STA. 397+75 LT

REMOVING SIGNS
 AS SHOWN - 6

SPECIAL PROVISION (CORING CONCRETE)
 STA. 393+71 LT

RELOCATE MAILBOX, SINGLE SUPPORT
 STA. 393+42 RT



- 51 STA. 393+70.76 LT 28.21' TO
 STA. 393+71.74 RT 28.00'
 REMOVE DROP INLET AND PIPE
 PRECAST CONCRETE REINFORCED DROP
 INLET WITH CAST IRON GRATE (TYPE D)
 RIM = 612.95'
 INSTALL NEW 18" CPEP (53'-0")
 INV. IN = 609.90'
 INV. OUT = 609.60'
- 52 STA. 394+89.99 RT 28.93' TO
 STA. 394+93.55 LT 23.95'
 REMOVE EXISTING PIPE
 INSTALL NEW 18" CPEP ~~(53'-0")~~
 (48'-0")
 INV. IN = 612.30'
 INV. OUT = 610.20'

SIGN LEGEND
 R = REMOVE
 R&S = REMOVE AND SALVAGE
 RET = RETAIN
 S = SALVAGE
 N = NEW
 B-B = BACK TO BACK
 --- = EXISTING
 — = NEW



PROJECT NAME: RANDOLPH	PLOT DATE: 6/5/2014
PROJECT NUMBER: STP 2932 (1)	DRAWN BY: B. BRESLEND
FILE NAME: z10c270.dgn	CHECKED BY: C. LATHROP
PROJECT LEADER: C. LATHROP	DESIGNED BY: B. BRESLEND
DESIGNED BY: B. BRESLEND	PROJECT LAYOUT SHEET 67
	SHEET 98 OF 276