

DURABLE 4 INCH WHITE LINE (SEE OPTION ITEMS)
 STA. 387+25 - STA. 392+75 (SOLID LT & RT)
 (WITH EDGE LINE BREAKS AT TH#52)
 STA. 389+12 RT (EDGE LINES AT TH#52)

DURABLE 4 INCH YELLOW LINE, POLYUREA
 STA. 387+25 - STA. 392+75 (SOLID LT & RT)
 (WITH CENTERLINE BREAKS AT TH#52)
 STA. 389+12 RT (CENTERLINE AT TH#52)

TEMPORARY 4 INCH WHITE LINE, PAINT
 STA. 387+25 - STA. 392+75 (SOLID LT & RT)
 (WITH EDGE LINE BREAKS AT TH#52)
 STA. 389+12 RT (EDGE LINES AT TH#52)

TEMPORARY 4 INCH YELLOW LINE, PAINT
 STA. 387+25 - STA. 392+75 (SOLID LT & RT)
 (WITH CENTERLINE BREAKS AT TH#52)
 STA. 389+12 RT (CENTERLINE AT TH#52)

DURABLE 24 INCH STOP BAR (SEE OPTIONS ITEMS)
 STA. 389+13 - STA. 389+47 RT

DURABLE LETTER OR SYMBOL (SEE OPTIONS ITEMS)
 STA. 389+24 RT "STOP"

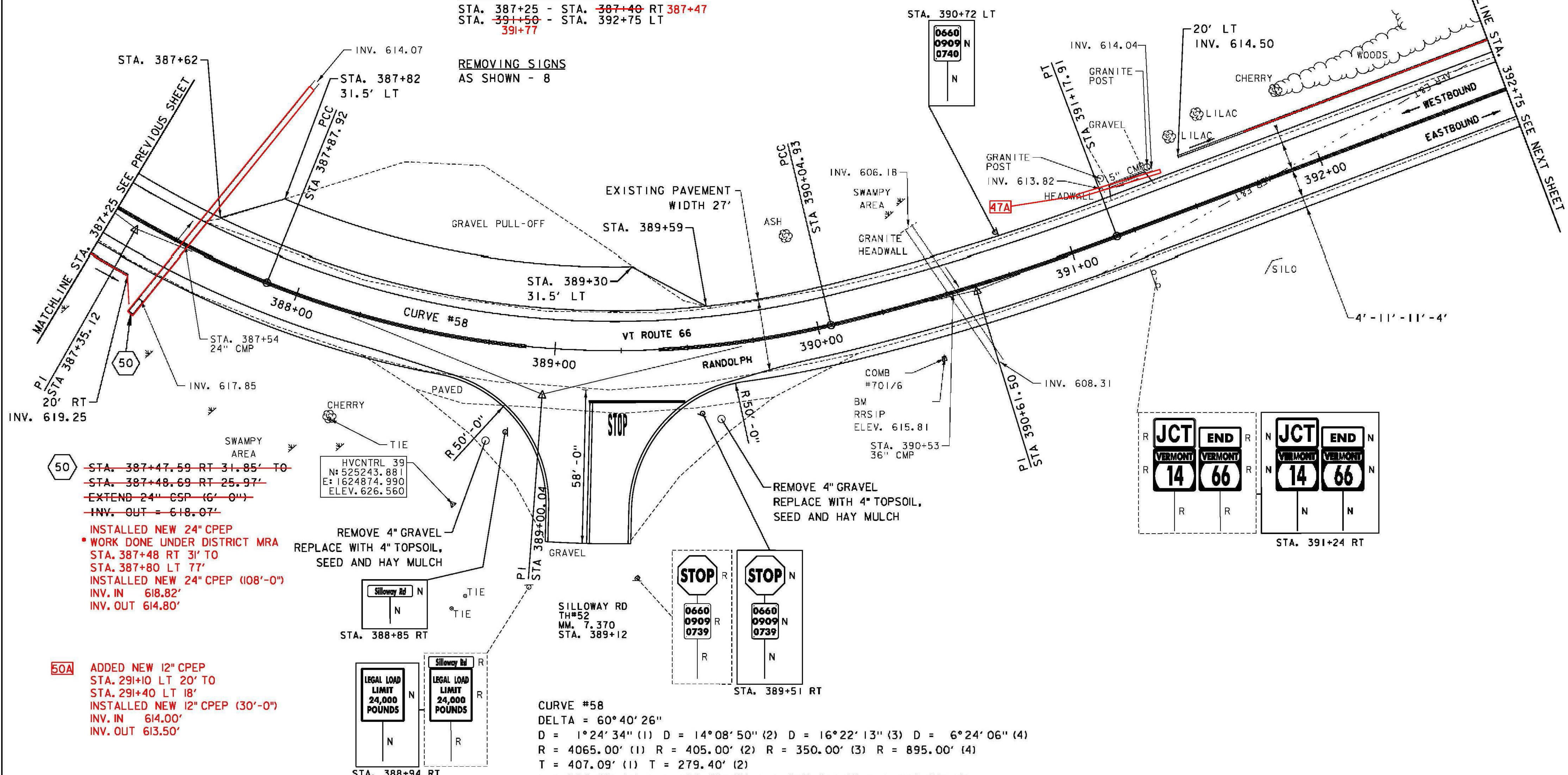
TEMPORARY 24 INCH STOP BAR, PAINT
 STA. 389+13 - STA. 389+47 RT

TEMPORARY LETTER OR SYMBOL, PAINT
 STA. 389+24 RT "STOP"

6 INCH UNDERDRAIN PIPE

STA. 387+25 - STA. ~~387+40~~ RT 387+47
 STA. ~~391+50~~ - STA. 392+75 LT
 391+77

REMOVING SIGNS
 AS SHOWN - 8

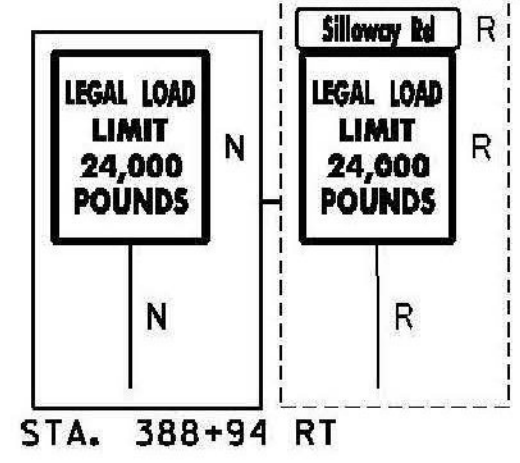
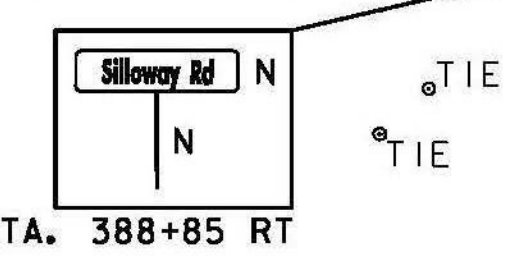
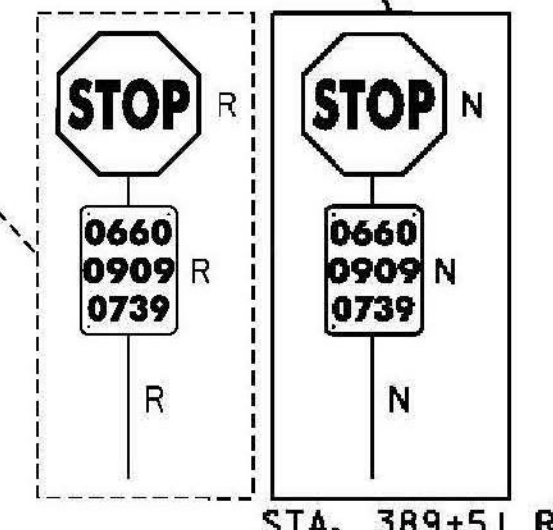
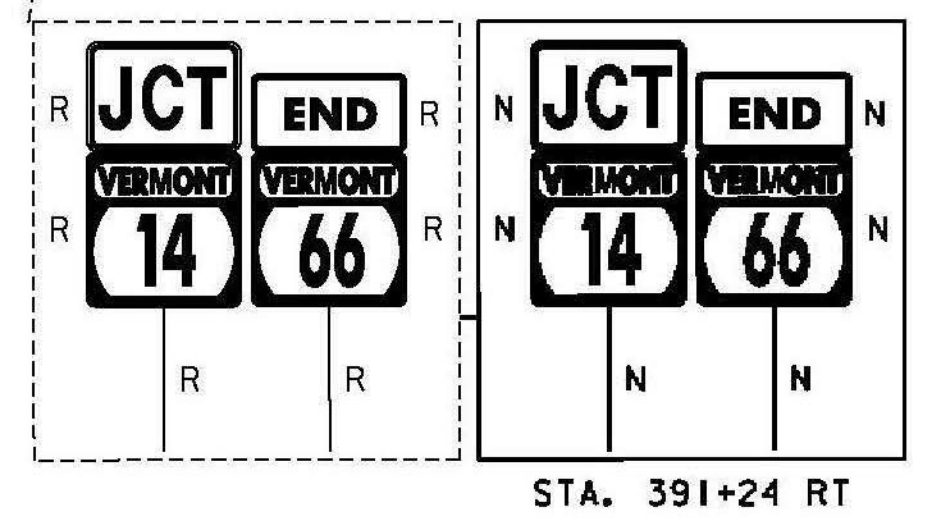


50 ~~STA. 387+47.59 RT 31.85' TO~~
~~STA. 387+48.69 RT 25.97'~~
~~EXTEND 24" CSP (6'-0")~~
~~INV. OUT = 618.07'~~
 INSTALLED NEW 24" CPEP
 WORK DONE UNDER DISTRICT MRA
 STA. 387+48 RT 31' TO
 STA. 387+80 LT 77'
 INSTALLED NEW 24" CPEP (108'-0")
 INV. IN 618.82'
 INV. OUT 614.80'

50A ADDED NEW 12" CPEP
 STA. 291+10 LT 20' TO
 STA. 291+40 LT 18'
 INSTALLED NEW 12" CPEP (30'-0")
 INV. IN 614.00'
 INV. OUT 613.50'

SIGN LEGEND
 R = REMOVE
 R&S = REMOVE AND SALVAGE
 RET = RETAIN
 S = SALVAGE
 N = NEW
 B-B = BACK TO BACK
 --- = EXISTING
 --- = NEW

CURVE #58
 DELTA = 60°40'26"
 D = 1°24'34" (1) D = 14°08'50" (2) D = 16°22'13" (3) D = 6°24'06" (4)
 R = 4065.00' (1) R = 405.00' (2) R = 350.00' (3) R = 895.00' (4)
 T = 407.09' (1) T = 279.40' (2)
 L = 204.99' (1) L = 106.22' (2) L = 217.01' (3) L = 112.98' (4)
 E = 20.33'
 BANKING REVERSE CROWN, 0.077 FT/FT, 0.060 FT/FT, 0.053 FT/FT
 DESIGN SPEED 35 MPH
 SEE SUPERELEVATION DIAGRAMS
 FOR MORE INFORMATION



PROJECT NAME: RANDOLPH
 PROJECT NUMBER: STP 2932 (1)
 FILE NAME: z10c270.dgn
 PROJECT LEADER: C. LATHROP
 DESIGNED BY: B. BRESLEND
 PROJECT LAYOUT SHEET 66
 PLOT DATE: 6/5/2014
 DRAWN BY: B. BRESLEND
 CHECKED BY: C. LATHROP
 SHEET 97 OF 276