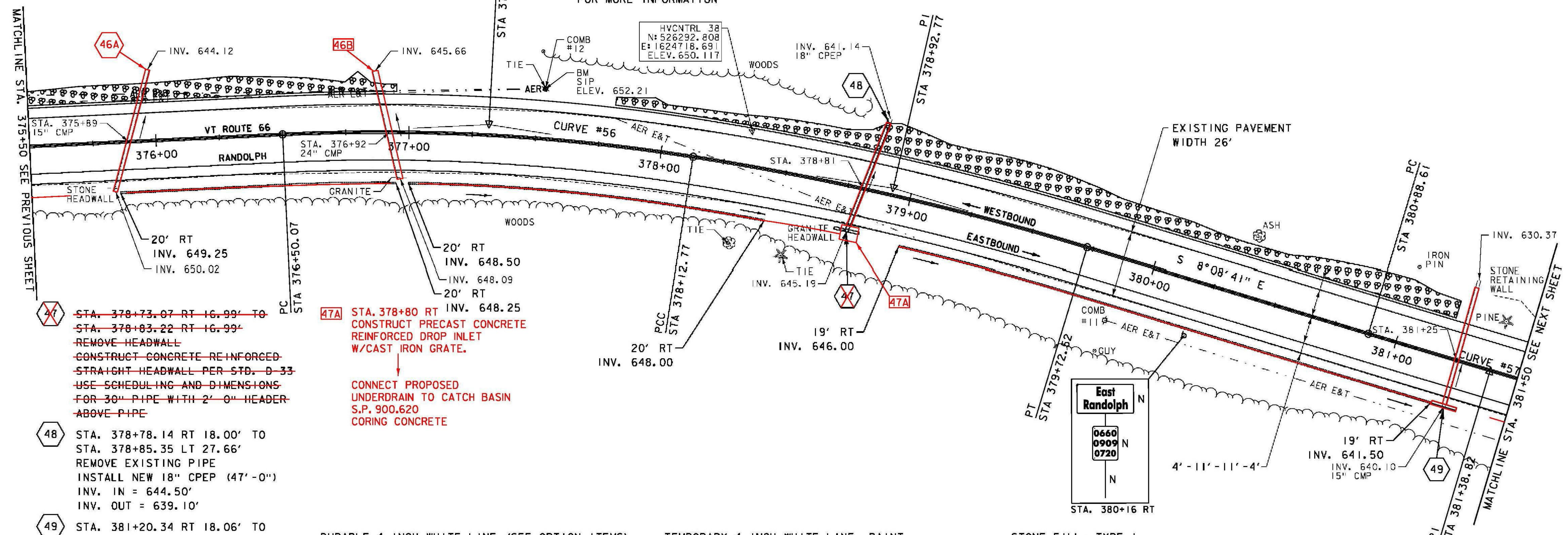
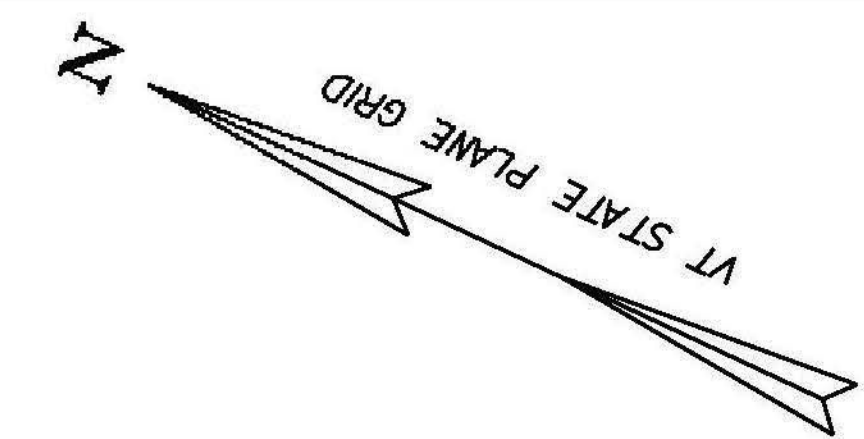


**46A** \*WORK DONE UNDER DISTRICT MRA  
 STA. 375+84 RT 19' TO  
 STA. 375+99 LT 31'  
 INSTALLED NEW 18" CPEP (52'-0")  
 INV. IN 650.0'  
 INV. OUT 648.96'

**46B** INSTALLED NEW 24" CPEP  
 WORK DONE UNDER DISTRICT MRA  
 STA. 376+87 LT 32' TO  
 STA. 376+96 RT 20'  
 INSTALLED NEW 24" CPEP (52'-0")  
 INV. IN 648.10'  
 INV. OUT 646.02'

**CURVE #56**  
 DELTA = 19°36'41"  
 D = 7°09'43" (1) D = 4°58'56" (2)  
 R = 800.00' (1) R = 1150.00' (2)  
 T = 148.31' (1) T = 177.27' (2)  
 L = 162.70' (1) L = 159.75' (2)  
 E = 13.63'  
 BANKING 0.079 FT/FT, 0.071 FT/FT  
 DESIGN SPEED 50 MPH  
 SEE SUPERELEVATION DIAGRAMS  
 FOR MORE INFORMATION



**47** STA. 378+73.07 RT 16.99' TO  
 STA. 378+83.22 RT 16.99'  
 REMOVE HEADWALL  
 CONSTRUCT CONCRETE REINFORCED  
 STRAIGHT HEADWALL PER STD. D-33  
 USE SCHEDULING AND DIMENSIONS  
 FOR 30" PIPE WITH 2'-0" HEADER  
 ABOVE PIPE

**47A** STA. 378+80 RT  
 CONSTRUCT PRECAST CONCRETE  
 REINFORCED DROP INLET  
 W/CAST IRON GRATE.  
 CONNECT PROPOSED  
 UNDERDRAIN TO CATCH BASIN  
 S.P. 900.620  
 CORING CONCRETE

**48** STA. 378+78.14 RT 18.00' TO  
 STA. 378+85.35 LT 27.66'  
 REMOVE EXISTING PIPE  
 INSTALL NEW 18" CPEP (47'-0")  
 INV. IN = 644.50'  
 INV. OUT = 639.10'

**49** STA. 381+20.34 RT 18.06' TO  
 STA. 381+30.32 RT 18.06'  
 CONSTRUCT CONCRETE REINFORCED  
 STRAIGHT HEADWALL PER STD. D-33  
 USE SCHEDULING AND DIMENSIONS  
 FOR 30" PIPE WITH 2'-9" HEADER  
 ABOVE PIPE

**49** INSTALLED NEW 18" CPEP  
 \*WORK DONE UNDER DISTRICT MRA  
 STA. 381+25 LT 30' TO  
 STA. 381+25 RT 19'  
 INSTALLED NEW 18" CPEP (49'-0")  
 INV. IN 640.25'  
 INV. OUT 639.02'

**DURABLE 4 INCH WHITE LINE (SEE OPTION ITEMS)**  
 STA. 375+50 - STA. 381+50 (SOLID LT & RT)

**TEMPORARY 4 INCH WHITE LINE, PAINT**  
 STA. 375+50 - STA. 381+50 (SOLID LT & RT)

**DURABLE 4 INCH YELLOW LINE, POLYUREA**  
 STA. 375+50 - STA. 381+50 (SOLID LT & RT)

**TEMPORARY 4 INCH YELLOW LINE, PAINT**  
 STA. 375+50 - STA. 381+50 (SOLID LT & RT)

**STONE FILL, TYPE I**  
 STA. 375+50 - STA. 376+95 LT  
 STA. 377+80 - STA. 381+20 LT

**GEOTEXTILE FOR SILT FENCE**  
 STA. 375+50 - STA. 376+95 LT  
 STA. 377+80 - STA. 381+20 LT

**GRUBBING MATERIAL (6")**  
 STA. 375+50 - STA. 376+95 LT  
 STA. 377+80 - STA. 381+20 LT

**CURVE #57**  
 DELTA = 0°28'46"  
 D = 0°28'39"  
 R = 12000.00'  
 T = 50.21'  
 L = 100.41'  
 E = 0.11'  
 BANKING NORMAL CROWN  
 DESIGN SPEED 50 MPH

**6 INCH UNDERDRAIN PIPE**  
 STA. 375+85 - STA. 376+95 RT STA 375+89 - STA 376+87 RT  
 STA. 377+00 - STA. 378+45 RT STA 377+05 - STA 378+67 RT  
 STA. 379+00 - STA. 381+20 RT STA 379+01 - STA 381+25 RT

**SIGN LEGEND**  
 R = REMOVE  
 R&S = REMOVE AND SALVAGE  
 RET = RETAIN  
 S = SALVAGE  
 N = NEW  
 B-B = BACK TO BACK  
 --- = EXISTING  
 — = NEW



PROJECT NAME: RANDOLPH  
 PROJECT NUMBER: STP 2932 (1)  
 FILE NAME: z10c270.dgn  
 PROJECT LEADER: C. LATHROP  
 DESIGNED BY: B. BRESLEND  
 PROJECT LAYOUT SHEET 64  
 PLOT DATE: 6/5/2014  
 DRAWN BY: B. BRESLEND  
 CHECKED BY: C. LATHROP  
 SHEET 95 OF 276