

DURABLE 4 INCH WHITE LINE (SEE OPTION ITEMS)
STA. 336+25 - STA. 341+50 (SOLID LT & RT)

TEMPORARY 4 INCH WHITE LINE, PAINT
STA. 336+25 - STA. 341+50 (SOLID LT & RT)

STONE FILL, TYPE I
STA. 336+25 - STA. 339+00 LT
STA. 339+20 - STA. 339+90 LT
STA. 340+70 - STA. 341+20 LT

DURABLE 4 INCH YELLOW LINE, POLYUREA
STA. 336+25 - STA. 341+50 (SOLID LT & RT)

TEMPORARY 4 INCH YELLOW LINE, PAINT
STA. 336+25 - STA. 341+50 (SOLID LT & RT)

GEOTEXTILE FOR SILT FENCE
STA. 336+25 - STA. 339+00 LT
STA. 339+20 - STA. 339+90 LT
STA. 340+70 - STA. 341+20 LT

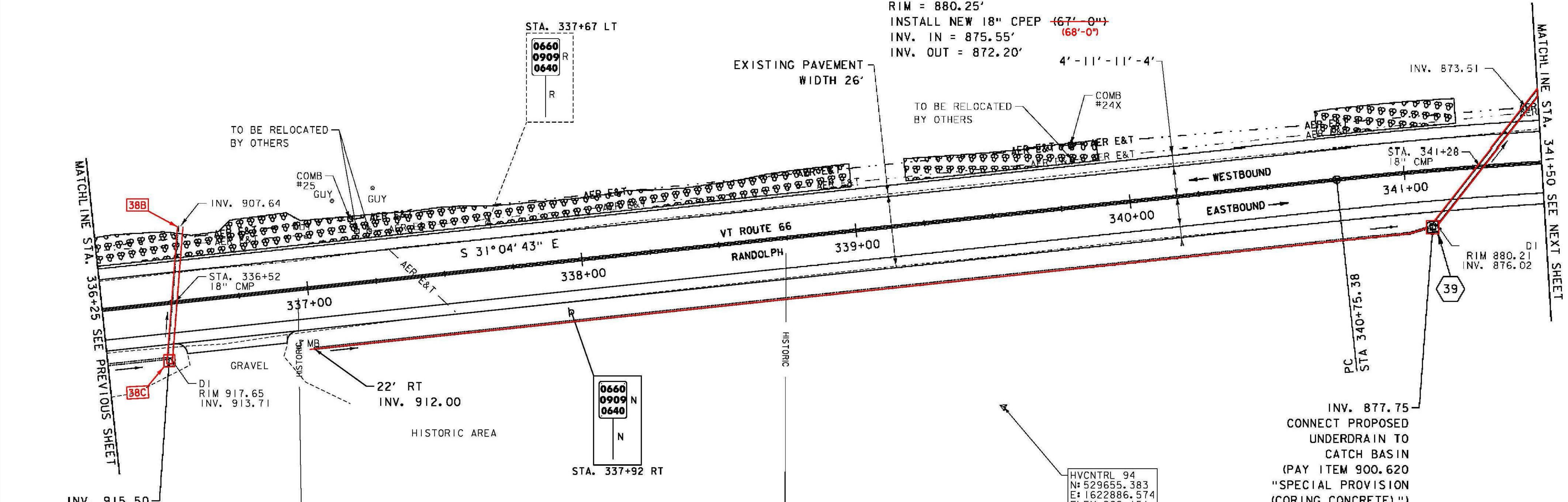
6 INCH UNDERDRAIN PIPE
STA. 336+25 - STA. 336+47 RT 336+51
STA. 337+00 - STA. 341+09 RT
STA. 336+98 - STA. 341+08 RT
MILLED RUMBLE STRIPS
STA. 336+25 - STA. 341+50 CTR

REMOVING SIGNS
AS SHOWN - I

GRUBBING MATERIAL (6")
STA. 336+25 - STA. 339+00 LT
STA. 339+20 - STA. 339+90 LT
STA. 340+70 - STA. 341+20 LT

SPECIAL PROVISION (CORING CONCRETE)
STA. 336+47 RT
STA. 341+09 RT

39 STA. 341+08.65 RT 20.50' TO
STA. 341+54.10 LT 29.79'
REMOVE EXISTING DROP INLET AND PIPE
INSTALL NEW CONCRETE REINFORCED DROP
INLET WITH CAST IRON GRATE (TYPE D)
RIM = 880.25'
INSTALL NEW 18" CPEP (67'-0")
INV. IN = 875.55' (68'-0")
INV. OUT = 872.20'



INV. 915.50
CONNECT PROPOSED
UNDERDRAIN TO
CATCH BASIN
(PAY ITEM 900.620
"SPECIAL PROVISION
(CORING CONCRETE)")

38B STA. 336+48 RT 20' TO
STA. 336+56 LT 27'
REMOVE EXISTING 18" CMP, INSTALL
NEW 18" CPEP (45'-0").

38C STA. 336+48 RT 21'
REMOVE EXISTING DROP INLET
AND REPLACE WITH NEW
PRECAST CONCRETE
CATCH BASIN W/ CAST
IRON GRATE.
↓
CONNECT PROPOSED
UNDERDRAIN TO CATCH BASIN
PAY ITEM 900.620
S.P. CORING CONCRETE

SIGN LEGEND
R = REMOVE
R&S = REMOVE AND SALVAGE
RET = RETAIN
S = SALVAGE
N = NEW
B-B = BACK TO BACK
— = EXISTING
— = NEW

HVCNTRL 94
N: 529655.383
E: 1622886.574
ELEV. 902.151

INV. 877.75
CONNECT PROPOSED
UNDERDRAIN TO
CATCH BASIN
(PAY ITEM 900.620
"SPECIAL PROVISION
(CORING CONCRETE)")

PROJECT NAME: RANDOLPH	PLOT DATE: 6/5/2014
PROJECT NUMBER: STP 2932 (1)	DRAWN BY: B. BRESLEND
FILE NAME: z10c270.dgn	CHECKED BY: C. LATHROP
PROJECT LEADER: C. LATHROP	SHEET 88 OF 276
DESIGNED BY: B. BRESLEND	
PROJECT LAYOUT SHEET 57	