

DURABLE 4 INCH WHITE LINE (SEE OPTION ITEMS)  
STA. 302+75 - STA. 308+50 (SOLID LT & RT)

TEMPORARY 4 INCH WHITE LINE, PAINT  
STA. 302+75 - STA. 308+50 (SOLID LT & RT)

SPECIAL PROVISION (CORING CONCRETE)  
STA. 306+74 RT

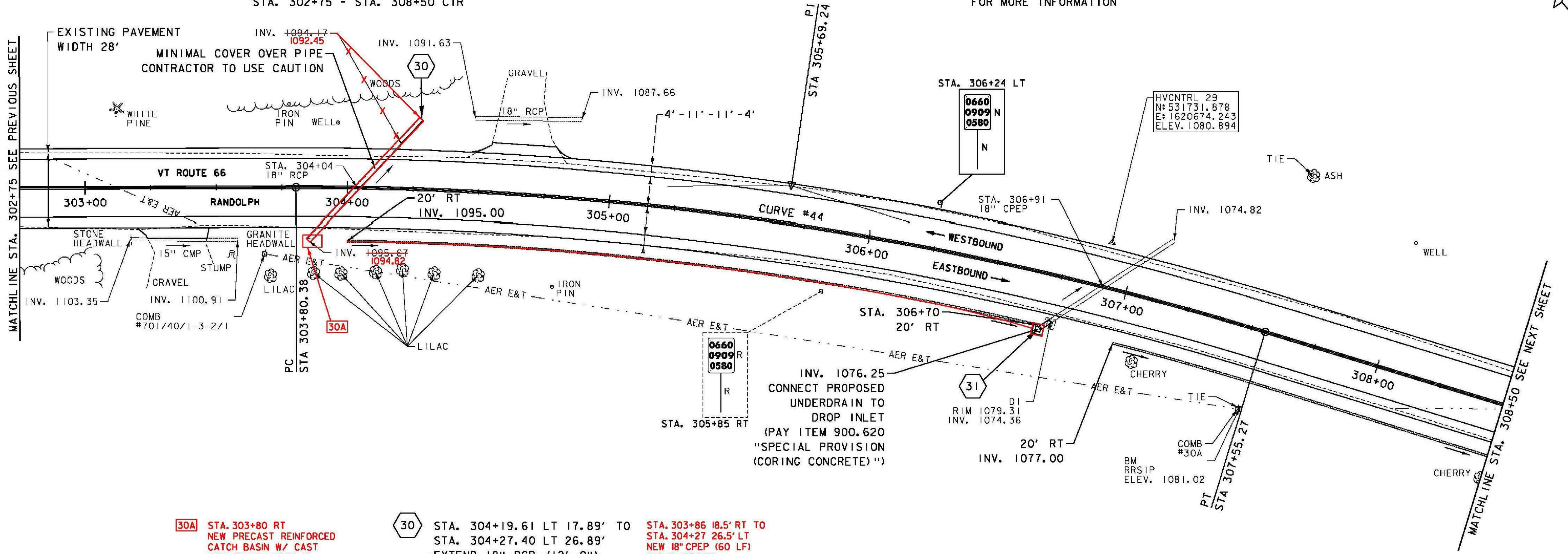
DURABLE 4 INCH YELLOW LINE, POLYUREA  
STA. 302+75 - STA. 308+50 (SOLID LT & RT)

TEMPORARY 4 INCH YELLOW LINE, PAINT  
STA. 302+75 - STA. 308+50 (SOLID LT & RT)

CURVE #44  
DELTA = 17°11'01"  
D = 4°35'01"  
R = 1250.00'  
T = 188.86'  
L = 374.89'  
E = 14.19'  
BANKING 0.069 FT/FT  
DESIGN SPEED 50 MPH  
SEE SUPERELEVATION DIAGRAMS  
FOR MORE INFORMATION

6 INCH UNDERDRAIN PIPE  
STA. 304+00 - STA. 306+70 RT 306+75  
STA. 307+00 - STA. 308+50 RT  
STA. 302+75 - STA. 303+20 RT  
MILLED RUMBLE STRIPS  
STA. 302+75 - STA. 308+50 CTR

REMOVING SIGNS  
AS SHOWN - I

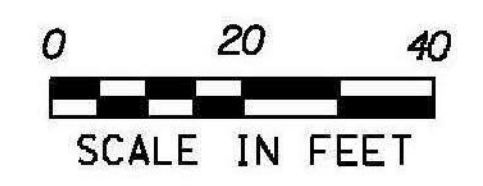


**30A** STA. 303+80 RT  
NEW PRECAST REINFORCED  
CATCH BASIN W/ CAST  
IRON GRATE (TYPE D).

**30** STA. 304+19.61 LT 17.89' TO  
STA. 304+27.40 LT 26.89'  
~~EXTEND 18" RCP (12'-0")~~  
INV. OUT = 1093.82'  
STA. 303+86 18.5' RT TO  
STA. 304+27 26.5' LT  
NEW 18" CPEP (60 LF)  
INV. IN 1094.82  
INV. OUT 1092.45

**31** STA. 306+70.57 RT 21.50' TO  
STA. 306+74.48 RT 17.49'  
REMOVE EXISTING DROP INLET  
CONSTRUCT PRECAST REINFORCED  
CONCRETE DROP INLET WITH  
CAST IRON GRATE (TYPE D)  
RIM ELV. = 1079.35'  
EXTEND 18" CPEP (4'-0")  
INV. IN = 1074.37'

**SIGN LEGEND**  
R = REMOVE  
R&S = REMOVE AND SALVAGE  
RET = RETAIN  
S = SALVAGE  
N = NEW  
B-B = BACK TO BACK  
--- = EXISTING  
— = NEW



PROJECT NAME: RANDOLPH  
PROJECT NUMBER: STP 2932 (1)

FILE NAME: z10c270.dgn  
PROJECT LEADER: C. LATHROP  
DESIGNED BY: B. BRESLEND  
PROJECT LAYOUT SHEET 51  
PLOT DATE: 6/5/2014  
DRAWN BY: B. BRESLEND  
CHECKED BY: C. LATHROP  
SHEET 82 OF 276