

DURABLE 4 INCH WHITE LINE (SEE OPTION ITEMS)
 STA. 286+50 - STA. 291+75 (SOLID LT & RT)
 (WITH EDGE LINE BREAKS AT TH#51)
 STA. 291+24 RT (EDGE LINES AT TH#51)

DURABLE 4 INCH YELLOW LINE, POLYUREA
 STA. 286+50 - STA. 291+75 (SOLID LT & RT)
 (WITH CENTERLINE BREAKS AT TH#51)
 STA. 291+24 RT (CENTERLINE AT TH#51)

DURABLE 24 INCH STOP BAR (SEE OPTIONS ITEMS)
 STA. 291+22 - STA. 291+40 RT

DURABLE LETTER OR SYMBOL (SEE OPTIONS ITEMS)
 STA. 291+30 RT "STOP"

TEMPORARY 4 INCH WHITE LINE, PAINT
 STA. 286+50 - STA. 291+75 (SOLID LT & RT)
 (WITH EDGE LINE BREAKS AT TH#51)
 STA. 291+24 RT (EDGE LINES AT TH#51)

TEMPORARY 4 INCH YELLOW LINE, PAINT
 STA. 286+50 - STA. 291+75 (SOLID LT & RT)
 (WITH CENTERLINE BREAKS AT TH#51)
 STA. 291+24 RT (CENTERLINE AT TH#51)

TEMPORARY 24 INCH STOP BAR, PAINT
 STA. 291+22 - STA. 291+40 RT

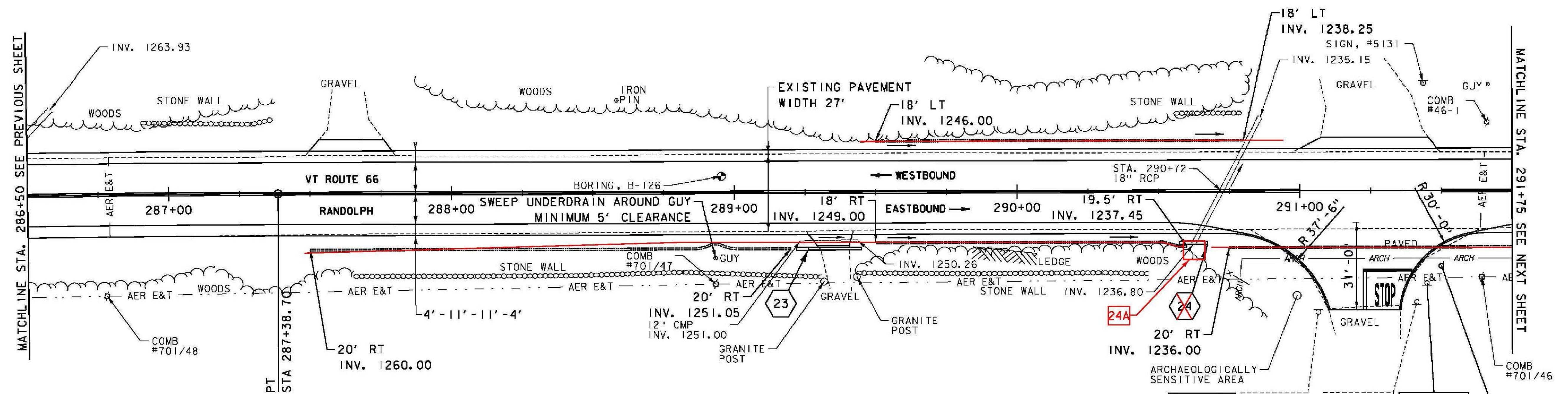
TEMPORARY LETTER OR SYMBOL, PAINT
 STA. 291+30 RT "STOP"

REMOVING SIGNS
 AS SHOWN - 3

SOLID ROCK EXCAVATION
 STA. 289+84 - STA. 290+08 RT

6 INCH UNDERDRAIN PIPE
~~STA. 278+50 - STA. 289+20 RT ONE RUN~~
~~STA. 289+50 - STA. 290+60 RT STA. 287+48 - STA. 290+57 RT~~
~~STA. 289+50 - STA. 290+80 LT STA. 289+44 - STA. 290+90 LT~~
 STA. 290+75 - STA. 291+75 RT
 290+65

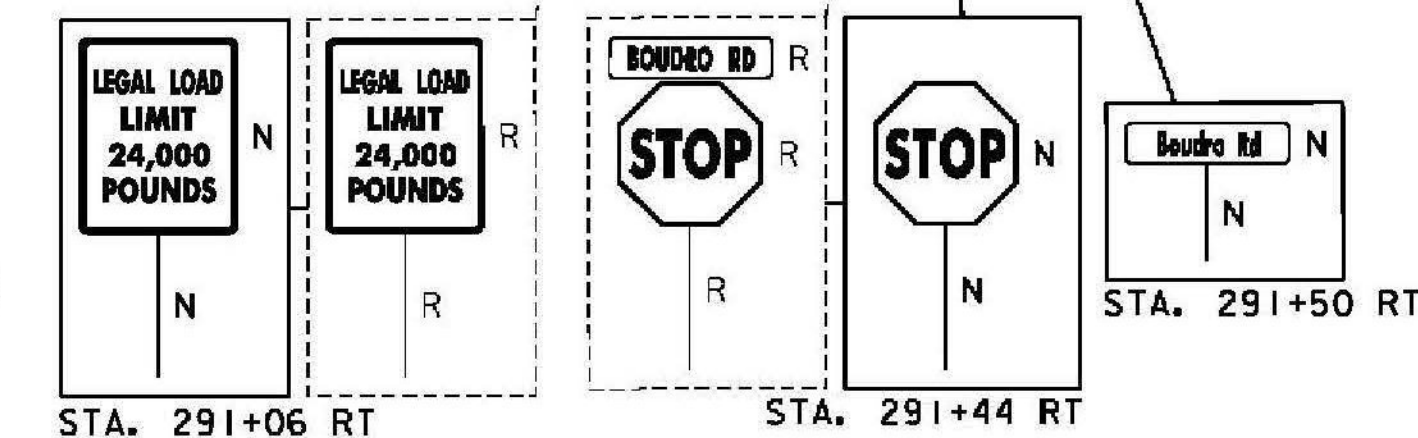
MILLED RUMBLE STRIPS
 STA. 286+50 - STA. 291+75 CTR
 (WITH BREAKS AT TH#51)



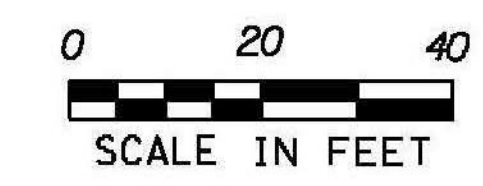
24A STA. 290+70 RT
 NEW CONCRETE PRECAST
 REINFORCED CATCH
 BASIN W/ CAST IRON
 GRATE.
 ↓
 CONNECT PROPOSED UNDERDRAIN
 TO CATCH BASIN.
 ITEM 900.620
 S.P. CORING CONCRETE

23 STA. 289+22.00 RT 20.00' TO
 STA. 289+44.00 RT 20.00'
 REMOVE EXISTING 12" CMP
 INSTALL NEW 12" CPEP (23'-0")
 INV. IN = 1251.00'
 INV. OUT = 1250.25'

24A ~~STA. 290+57.29 RT 17.82' TO~~
~~STA. 290+67.29 RT 17.82'~~
~~CONSTRUCT CONCRETE REINFORCED~~
~~STRAIGHT HEADWALL PER STD. D-33~~
~~USE SCHEDULING AND DIMENSIONS~~
~~FOR 36" PIPE WITH 2'-0" HEADER~~
~~ABOVE PIPE~~



SIGN LEGEND
 R = REMOVE
 R&S = REMOVE AND SALVAGE
 RET = RETAIN
 S = SALVAGE
 N = NEW
 B-B = BACK TO BACK
 --- = EXISTING
 — = NEW



PROJECT NAME: RANDOLPH
 PROJECT NUMBER: STP 2932 (1)
 FILE NAME: z10c270.dgn
 PROJECT LEADER: C. LATHROP
 DESIGNED BY: B. BRESLEND
 PROJECT LAYOUT SHEET 48
 PLOT DATE: 6/5/2014
 DRAWN BY: B. BRESLEND
 CHECKED BY: C. LATHROP
 SHEET 79 OF 276