

DURABLE 4 INCH WHITE LINE (SEE OPTION ITEMS)
 STA. 281+25 - STA. 286+50 (SOLID LT & RT)
 (WITH EDGE LINE BREAKS AT TH#31)
 STA. 283+09 LT (EDGE LINES AT TH#31)

TEMPORARY 4 INCH WHITE LINE, PAINT
 STA. 281+25 - STA. 286+50 (SOLID LT & RT)
 (WITH EDGE LINE BREAKS AT TH#31)
 STA. 283+09 LT (EDGE LINES AT TH#31)

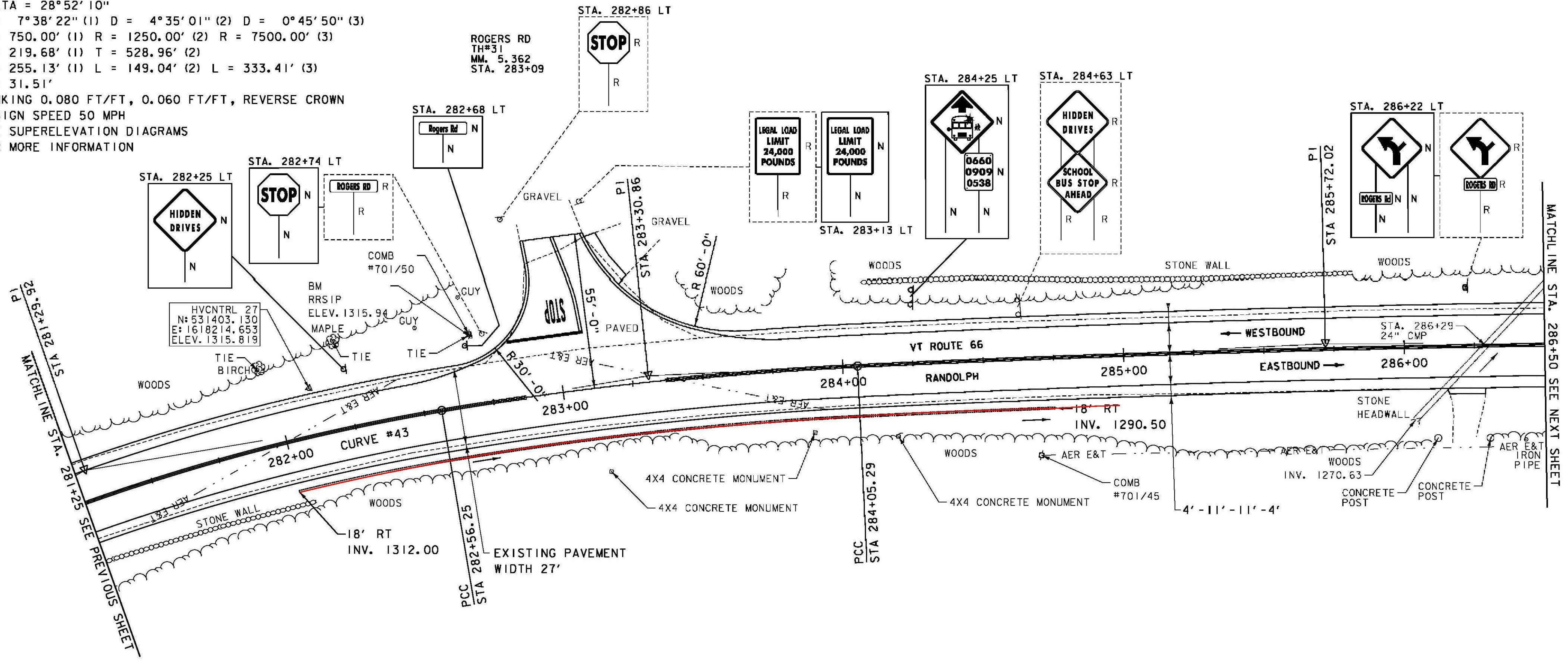
REMOVING SIGNS
 AS SHOWN - 7

DURABLE 4 INCH YELLOW LINE, POLYUREA
 STA. 281+25 - STA. 286+50 (SOLID LT & RT)
 (WITH CENTERLINE BREAKS AT TH#31)
 STA. 283+09 LT (CENTERLINE AT TH#31)

TEMPORARY 4 INCH YELLOW LINE, PAINT
 STA. 281+25 - STA. 286+50 (SOLID LT & RT)
 (WITH CENTERLINE BREAKS AT TH#31)
 STA. 283+09 LT (CENTERLINE AT TH#31)

6 INCH UNDERDRAIN PIPE
 STA. 282+00 - STA. ~~284+75~~ RT
 284+98

CURVE #43
 DELTA = 28°52'10"
 D = 7°38'22" (1) D = 4°35'01" (2) D = 0°45'50" (3)
 R = 750.00' (1) R = 1250.00' (2) R = 7500.00' (3)
 T = 219.68' (1) T = 528.96' (2)
 L = 255.13' (1) L = 149.04' (2) L = 333.41' (3)
 E = 31.51'
 BANKING 0.080 FT/FT, 0.060 FT/FT, REVERSE CROWN
 DESIGN SPEED 50 MPH
 SEE SUPERELEVATION DIAGRAMS
 FOR MORE INFORMATION



DURABLE 24 INCH STOP BAR (SEE OPTIONS ITEMS)
 STA. 282+83 - STA. 283+09 LT

TEMPORARY 24 INCH STOP BAR, PAINT
 STA. 282+83 - STA. 283+09 LT

DURABLE LETTER OR SYMBOL (SEE OPTIONS ITEMS)
 STA. 283+01 LT "STOP"

TEMPORARY LETTER OR SYMBOL, PAINT
 STA. 283+01 LT "STOP"

MILLED RUMBLE STRIPS
 STA. 283+37 - STA. 286+50 CTR

SIGN LEGEND
 R = REMOVE
 R&S = REMOVE AND SALVAGE
 RET = RETAIN
 S = SALVAGE
 N = NEW
 B-B = BACK TO BACK
 --- = EXISTING
 — = NEW



PROJECT NAME: RANDOLPH	PLOT DATE: 6/5/2014
PROJECT NUMBER: STP 2932 (1)	DRAWN BY: B. BRESLEND
FILE NAME: z10c270.dgn	CHECKED BY: C. LATHROP
PROJECT LEADER: C. LATHROP	SHEET 78 OF 276
DESIGNED BY: B. BRESLEND	
PROJECT LAYOUT SHEET 47	