

DURABLE 4 INCH WHITE LINE (SEE OPTION ITEMS)  
 STA. 231+25 - STA. 236+75 (SOLID LT & RT)  
 (WITH EDGE LINE BREAKS AT TH#30)  
 STA. 232+40 LT (EDGE LINES AT TH#30)  
 DURABLE 4 INCH YELLOW LINE, POLYUREA  
 STA. 231+25 - STA. 236+75 (SOLID LT & RT)  
 (WITH CENTERLINE BREAKS AT TH#30)  
 STA. 232+40 LT (CENTERLINE AT TH#30)

TEMPORARY 4 INCH WHITE LINE, PAINT  
 STA. 231+25 - STA. 236+75 (SOLID LT & RT)  
 (WITH EDGE LINE BREAKS AT TH#30)  
 STA. 232+40 LT (EDGE LINES AT TH#30)  
 TEMPORARY 4 INCH YELLOW LINE, PAINT  
 STA. 231+25 - STA. 236+75 (SOLID LT & RT)  
 (WITH CENTERLINE BREAKS AT TH#30)  
 STA. 232+40 LT (CENTERLINE AT TH#30)

6 INCH UNDERDRAIN PIPE  
 STA. ~~233+00~~ - STA. 236+00 LT  
 232+78  
 REMOVING SIGNS  
 AS SHOWN - 5

DURABLE 24 INCH STOP BAR (SEE OPTIONS ITEMS)  
 STA. 232+21 - STA. 232+41 LT

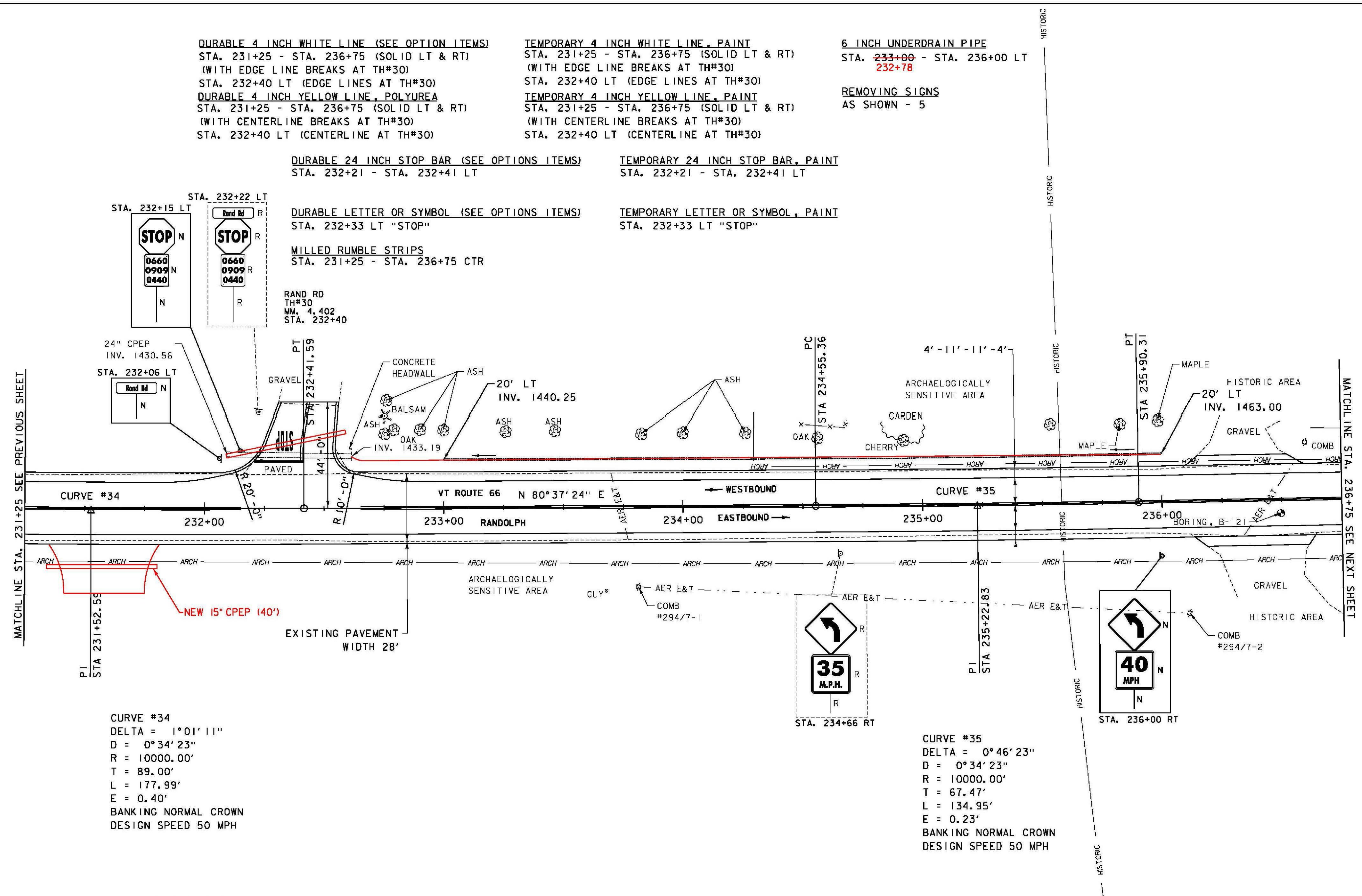
TEMPORARY 24 INCH STOP BAR, PAINT  
 STA. 232+21 - STA. 232+41 LT

DURABLE LETTER OR SYMBOL (SEE OPTIONS ITEMS)  
 STA. 232+33 LT "STOP"

TEMPORARY LETTER OR SYMBOL, PAINT  
 STA. 232+33 LT "STOP"

MILLED RUMBLE STRIPS  
 STA. 231+25 - STA. 236+75 CTR

RAND RD  
 TH#30  
 MM. 4.402  
 STA. 232+40



CURVE #34  
 DELTA = 1° 01' 11"  
 D = 0° 34' 23"  
 R = 10000.00'  
 T = 89.00'  
 L = 177.99'  
 E = 0.40'  
 BANKING NORMAL CROWN  
 DESIGN SPEED 50 MPH

CURVE #35  
 DELTA = 0° 46' 23"  
 D = 0° 34' 23"  
 R = 10000.00'  
 T = 67.47'  
 L = 134.95'  
 E = 0.23'  
 BANKING NORMAL CROWN  
 DESIGN SPEED 50 MPH

**SIGN LEGEND**  
 R = REMOVE  
 R&S = REMOVE AND SALVAGE  
 RET = RETAIN  
 S = SALVAGE  
 N = NEW  
 B-B = BACK TO BACK  
 --- = EXISTING  
 — = NEW



PROJECT NAME: RANDOLPH	PLOT DATE: 6/5/2014
PROJECT NUMBER: STP 2932 (1)	DRAWN BY: B. BRESLEND
FILE NAME: z10c270.dgn	CHECKED BY: C. LATHROP
DESIGNED BY: B. BRESLEND	SHEET 69 OF 276
PROJECT LAYOUT SHEET 38	