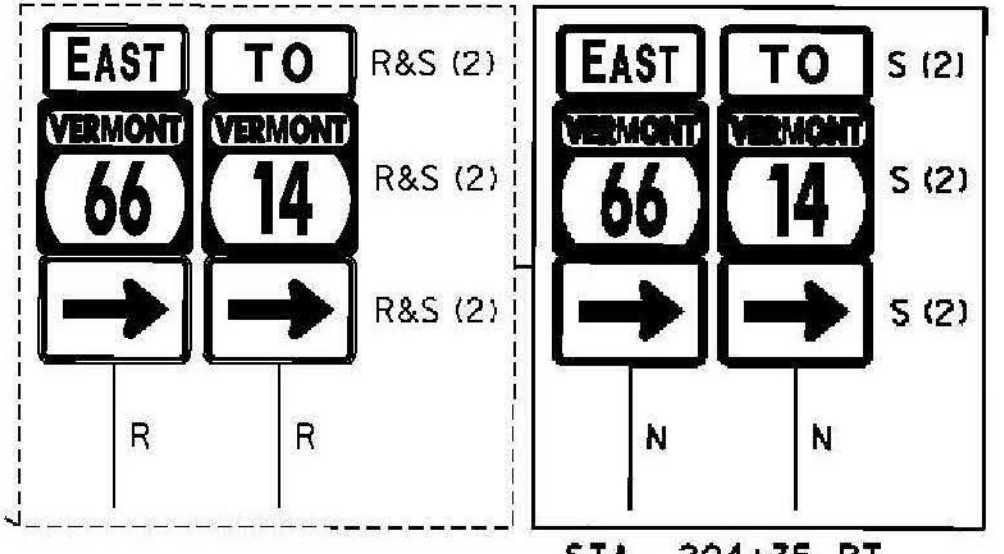
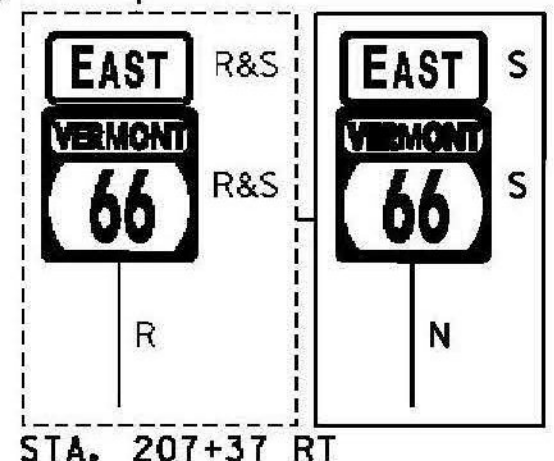
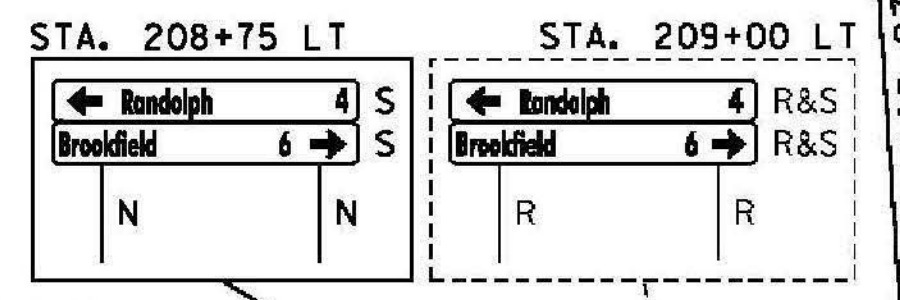
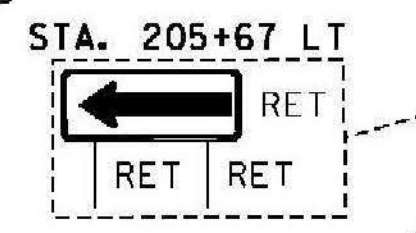
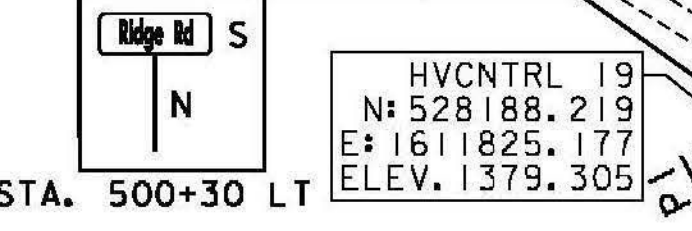
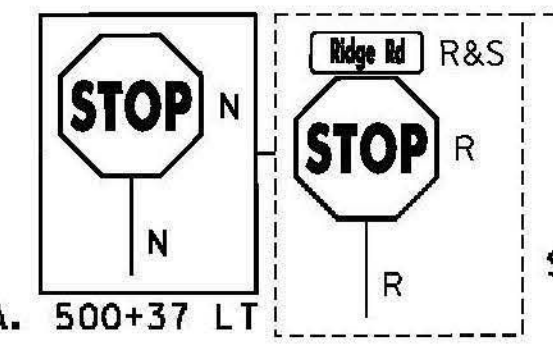


**CURVE #30**  
 DELTA = 45° 36' 25"  
 D = 24° 22' 52"  
 R = 235.00'  
 T = 98.80'  
 L = 187.06'  
 E = 19.93'  
 BANKING 0.060 FT/FT  
 DESIGN SPEED 30 MPH  
 SEE SUPERELEVATION DIAGRAMS  
 FOR MORE INFORMATION

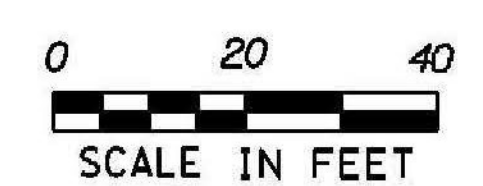


**SIGN LEGEND**  
 R = REMOVE  
 R&S = REMOVE AND SALVAGE  
 RET = RETAIN  
 S = SALVAGE  
 N = NEW  
 B-B = BACK TO BACK  
 --- = EXISTING  
 — = NEW

**REMOVING SIGNS**  
 AS SHOWN - 13

**ERECTING SALVAGED SIGNS**  
 AS SHOWN - 11

- DURABLE 24 INCH STOP BAR (SEE OPTIONS ITEMS)** STA. 206+39 - STA. 206+65 LT
- TEMPORARY 24 INCH STOP BAR, PAINT** STA. 206+39 - STA. 206+65 LT
- DURABLE LETTER OR SYMBOL (SEE OPTIONS ITEMS)** STA. 206+58 LT "STOP"
- TEMPORARY LETTER OR SYMBOL, PAINT** STA. 206+58 LT "STOP"
- DURABLE 4 INCH WHITE LINE (SEE OPTION ITEMS)** STA. 204+50 - STA. 209+50 (SOLID LT & RT) (WITH EDGE LINE BREAKS AT TH#1)
- TEMPORARY 4 INCH WHITE LINE, PAINT** STA. 204+50 - STA. 209+50 (SOLID LT & RT) (WITH EDGE LINE BREAKS AT TH#1)
- DURABLE 4 INCH YELLOW LINE, POLYUREA** STA. 204+50 - STA. 209+50 (SOLID LT & RT) (WITH CENTERLINE BREAKS AT TH#1)
- TEMPORARY 4 INCH YELLOW LINE, PAINT** STA. 204+50 - STA. 209+50 (SOLID LT & RT) (WITH CENTERLINE BREAKS AT TH#1)
- 6 INCH UNDERDRAIN PIPE** STA. 206+00 - STA. 209+50 RT
- REMOVAL OF EXISTING CURB** STA. 205+53 (VT66) - STA. 500+25 (TH#1) LT



PROJECT NAME: RANDOLPH	FILE NAME: z10c270.dgn	PLOT DATE: 6/5/2014
PROJECT NUMBER: STP 2932 (1)	PROJECT LEADER: C. LATHROP	DRAWN BY: B. BRESLEND
	DESIGNED BY: B. BRESLEND	CHECKED BY: C. LATHROP
	PROJECT LAYOUT SHEET 33	SHEET 64 OF 276