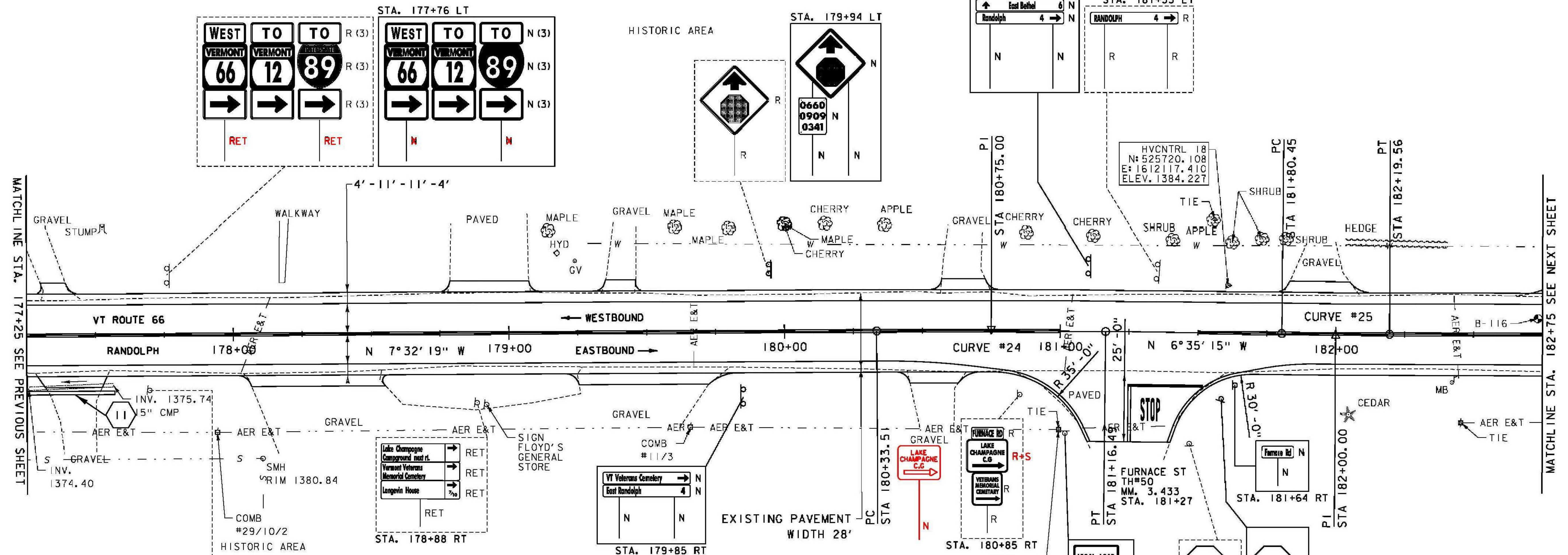


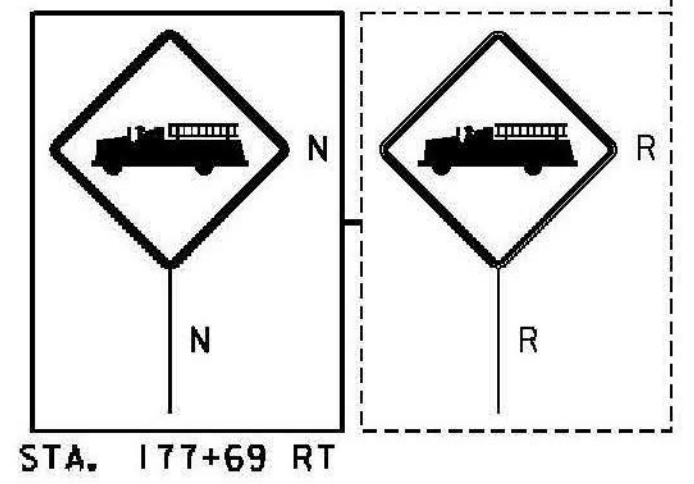
HISTORIC DIST HISTORIC DIST HISTORIC DIST HISTORIC DIST HISTORIC DIST

CURVE #24
 DELTA = 0°57'03"
 D = 1°08'45"
 R = 5000.00'
 T = 41.49'
 L = 82.98'
 E = 0.17'
 BANKING NORMAL CROWN
 DESIGN SPEED 35 MPH



MATCHLINE STA. 177+25 SEE PREVIOUS SHEET

MATCHLINE STA. 182+75 SEE NEXT SHEET



STA. 177+69 RT

DURABLE 4 INCH WHITE LINE (SEE OPTION ITEMS)
 STA. 177+25 - STA. 182+75 (SOLID LT & RT)
 (WITH EDGE LINE BREAKS AT TH#50)
 STA. 181+27 RT (EDGE LINES AT TH#50)

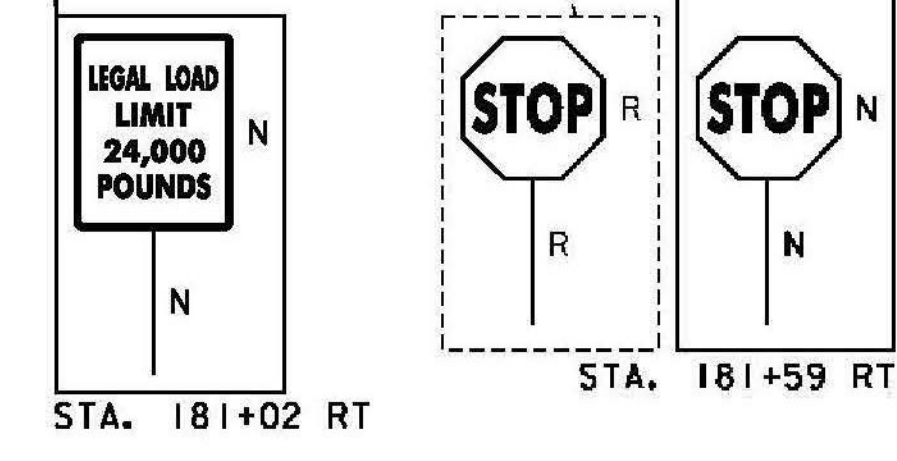
DURABLE 4 INCH YELLOW LINE, POLYUREA
 STA. 177+25 - STA. 182+75 (SOLID LT & RT)
 (WITH CENTERLINE BREAKS AT TH#50)
 STA. 181+27 RT (CENTERLINE AT TH#50)

REMOVING SIGNS
 AS SHOWN - 16

TEMPORARY 4 INCH WHITE LINE, PAINT
 STA. 177+25 - STA. 182+75 (SOLID LT & RT)
 (WITH EDGE LINE BREAKS AT TH#50)
 STA. 181+27 RT (EDGE LINES AT TH#50)

TEMPORARY 4 INCH YELLOW LINE, PAINT
 STA. 177+25 - STA. 182+75 (SOLID LT & RT)
 (WITH CENTERLINE BREAKS AT TH#50)
 STA. 181+27 RT (CENTERLINE AT TH#50)

RELOCATE MAILBOX, SINGLE SUPPORT
 STA. 182+42 RT



11 STA. 177+25.00 RT 21.00' TO
 STA. 177+57.00 RT 21.00'
 REMOVE EXISTING 15" CMP
 INSTALL NEW 15" CPEP (32'-0")
 INV. IN = 1375.70'
 INV. OUT = 1374.35'

CURVE #25
 DELTA = 0°26'54"
 D = 1°08'45"
 R = 5000.00'
 T = 19.56'
 L = 39.11'
 E = 0.04'
 BANKING NORMAL CROWN
 DESIGN SPEED 35 MPH

SIGN LEGEND
 R = REMOVE
 R&S = REMOVE AND SALVAGE
 RET = RETAIN
 S = SALVAGE
 N = NEW
 B-B = BACK TO BACK
 --- = EXISTING
 — = NEW

DURABLE 24 INCH STOP BAR (SEE OPTIONS ITEMS)
 STA. 181+25 - STA. 181+52 RT

DURABLE LETTER OR SYMBOL (SEE OPTIONS ITEMS)
 STA. 181+33 RT "STOP"

TEMPORARY 24 INCH STOP BAR, PAINT
 STA. 181+25 - STA. 181+52 RT

TEMPORARY LETTER OR SYMBOL, PAINT
 STA. 181+33 RT "STOP"



PROJECT NAME: RANDOLPH	PLOT DATE: 6/5/2014
PROJECT NUMBER: STP 2932 (1)	DRAWN BY: B. BRESLEND
FILE NAME: z10c270.dgn	CHECKED BY: C. LATHROP
PROJECT LEADER: C. LATHROP	SHEET 59 OF 276
DESIGNED BY: B. BRESLEND	
PROJECT LAYOUT SHEET 28	