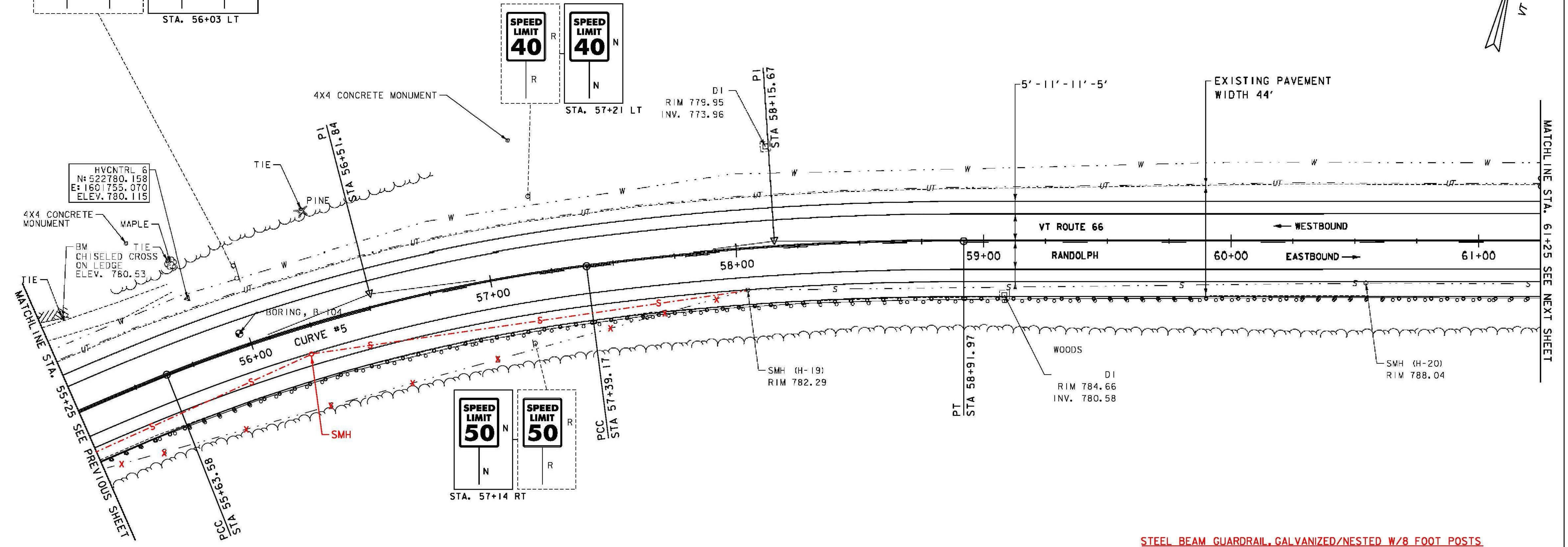
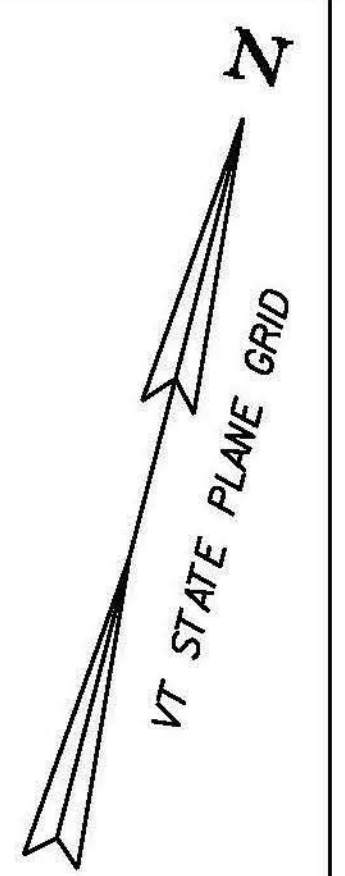


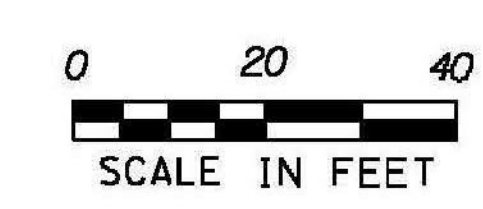
CURVE #5
 DELTA = 32°23'10"
 D = 5°19'47" (1) D = 8°11'06" (2) D = 4°46'29" (3)
 R = 1075.00' (1) R = 700.00' (2) R = 1200.00' (3)
 T = 270.26' (1) T = 272.60' (2)
 L = 201.10' (1) L = 175.59' (2) L = 152.80' (3)
 E = 33.45'
 BANKING 0.057 FT/FT, 0.071 FT/FT, 0.053 FT/FT
 DESIGN SPEED 40 MPH
 SEE SUPERELEVATION DIAGRAMS
 FOR MORE INFORMATION



- STEEL BEAM GUARDRAIL, GALVANIZED/NESTED W/8 FOOT POSTS**
 STA. 54+38 - STA. 61+25 RT (22' RT)
- REMOVAL AND DISPOSAL OF GUARDRAIL**
 STA. 55+25 - STA. 61+25 RT
- STEEL BEAM GUARDRAIL, GALVANIZED**
 STA. 55+25 - STA. ~~61+25~~ (22' RT)
 54+38
- SPECIAL PROVISION (CAP CURB DROP INLET)**
 STA. 59+09 RT
- CHANGING ELEVATION OF SEWER MANHOLES**
 STA. 58+04 RT
 STA. 60+55 RT

- DURABLE 4 INCH WHITE LINE (SEE OPTION ITEMS)**
 STA. 55+25 - STA. 61+25 (SOLID LT & RT)
- TEMPORARY 4 INCH WHITE LINE, PAINT**
 STA. 55+25 - STA. 61+25 (SOLID LT & RT)
- DURABLE 4 INCH YELLOW LINE, POLYUREA**
 STA. 55+25 - STA. 56+50 (SOLID LT & RT)
 STA. 56+50 - STA. 61+25 (SOLID LT, DASHED RT)
- TEMPORARY 4 INCH YELLOW LINE, PAINT**
 STA. 55+25 - STA. 56+50 (SOLID LT & RT)
 STA. 56+50 - STA. 61+25 (SOLID LT, DASHED RT)
- REMOVING SIGNS**
 AS SHOWN - 9
- MILLED RUMBLE STRIPS**
 STA. 55+25 - STA. 61+25 CTR

SIGN LEGEND
 R = REMOVE
 R&S = REMOVE AND SALVAGE
 RET = RETAIN
 S = SALVAGE
 N = NEW
 B-B = BACK TO BACK
 --- = EXISTING
 — = NEW



PROJECT NAME: RANDOLPH	PLOT DATE: 6/5/2014
PROJECT NUMBER: STP 2932 (1)	DRAWN BY: B. BRESLEND
FILE NAME: z10c270.dgn	CHECKED BY: C. LATHROP
PROJECT LEADER: C. LATHROP	DESIGNED BY: B. BRESLEND
DESIGNED BY: B. BRESLEND	PROJECT LAYOUT SHEET 7
	SHEET 36 OF 276