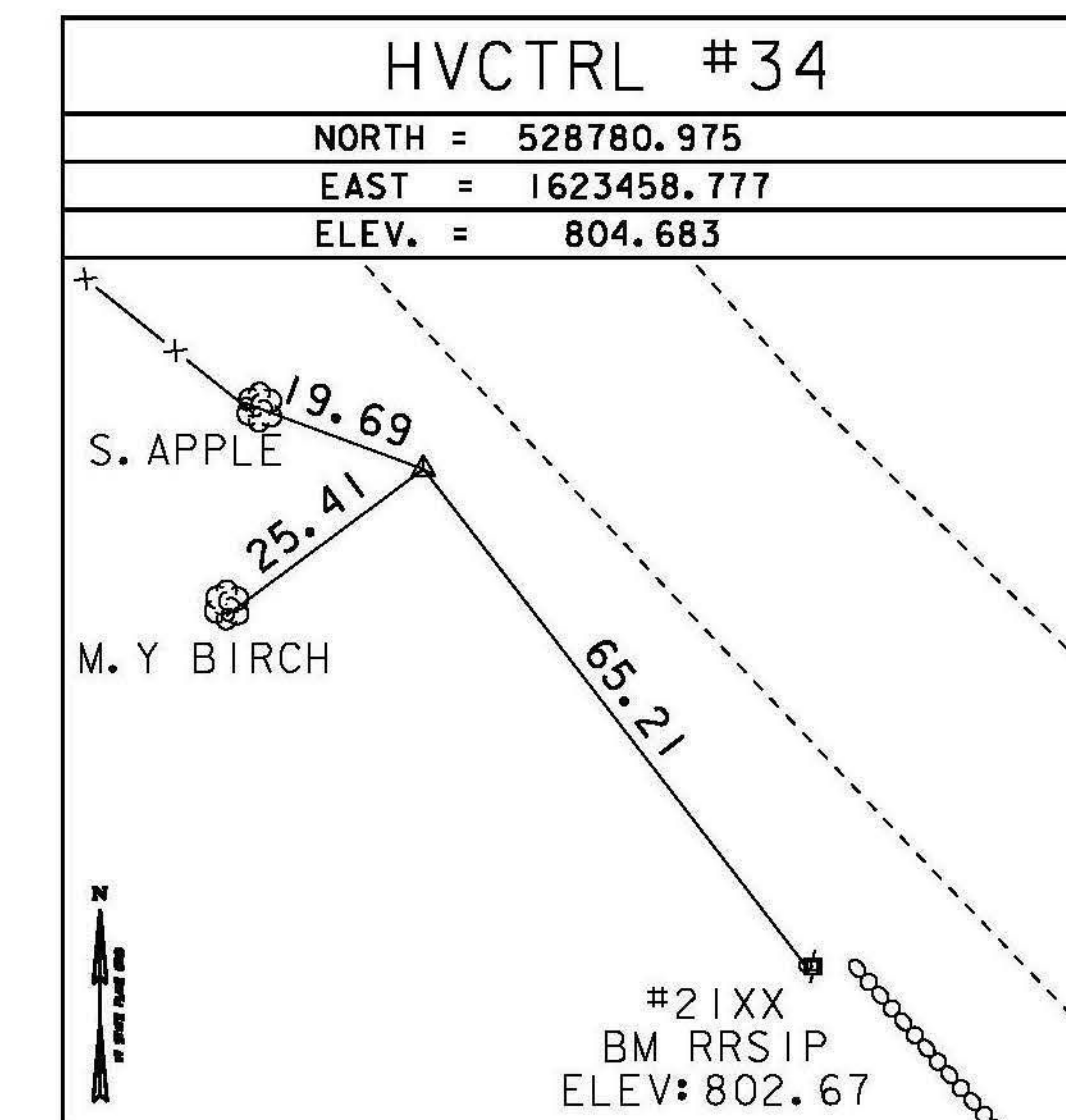


GPS CONTROL POINTS

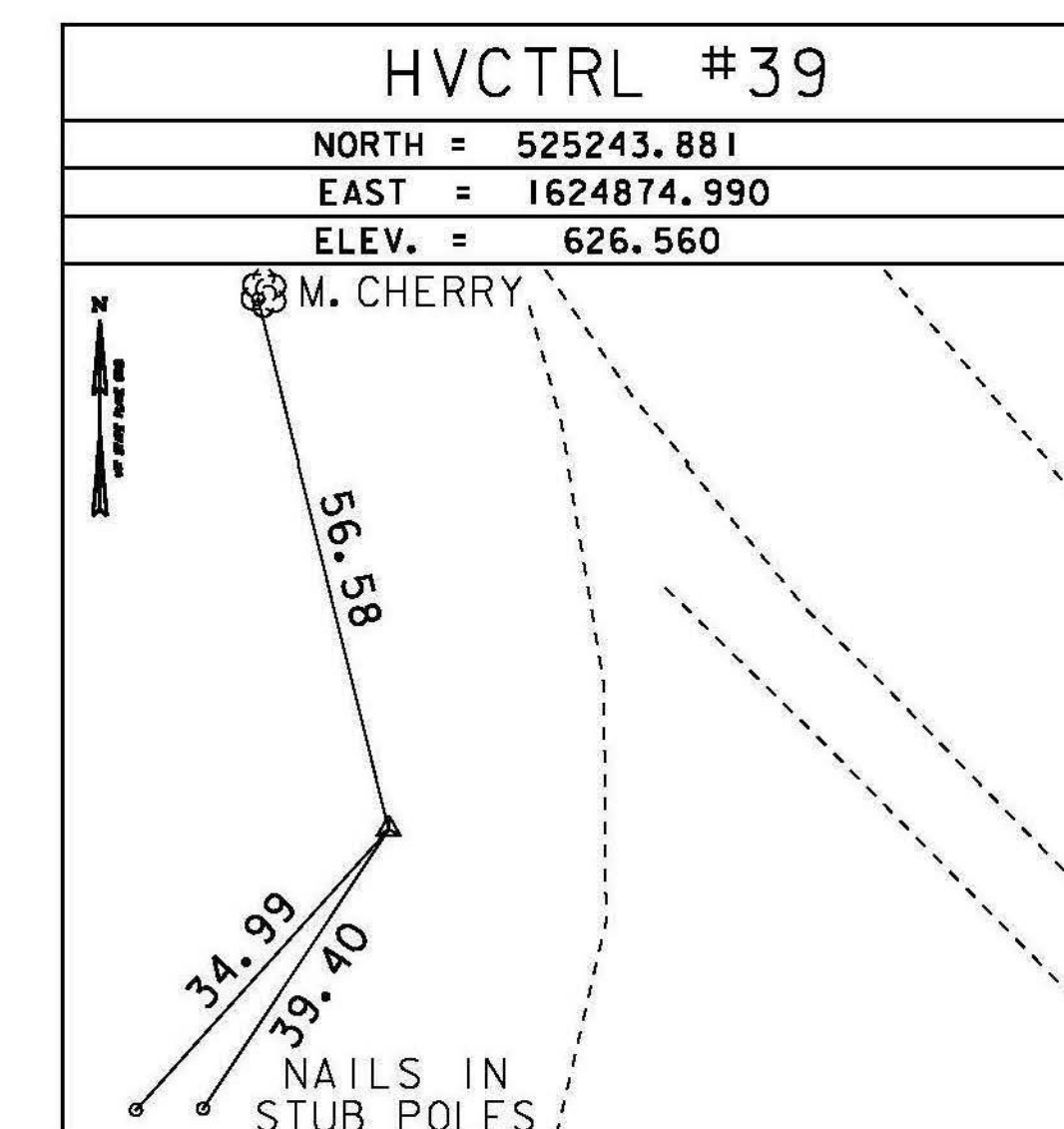
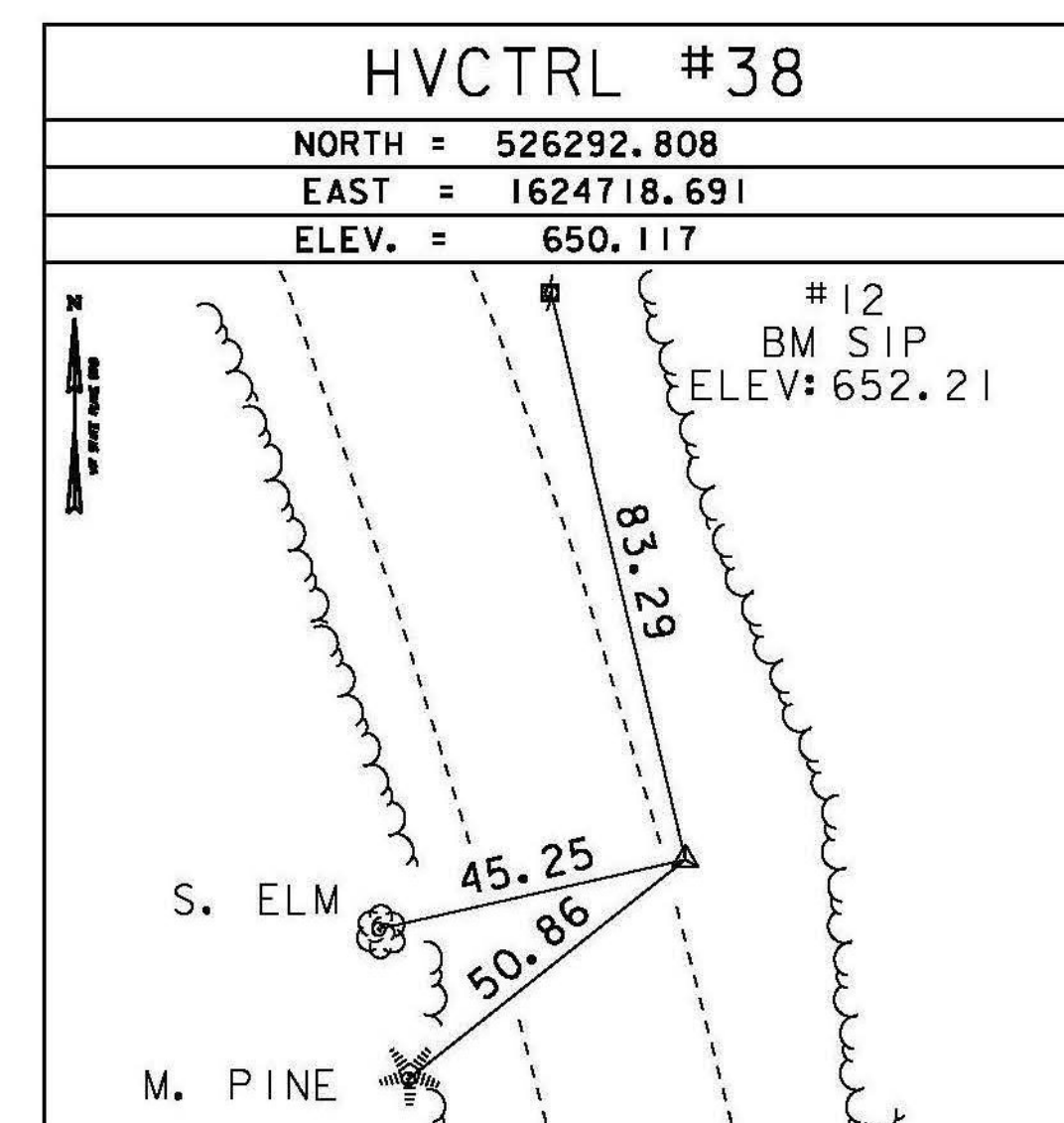
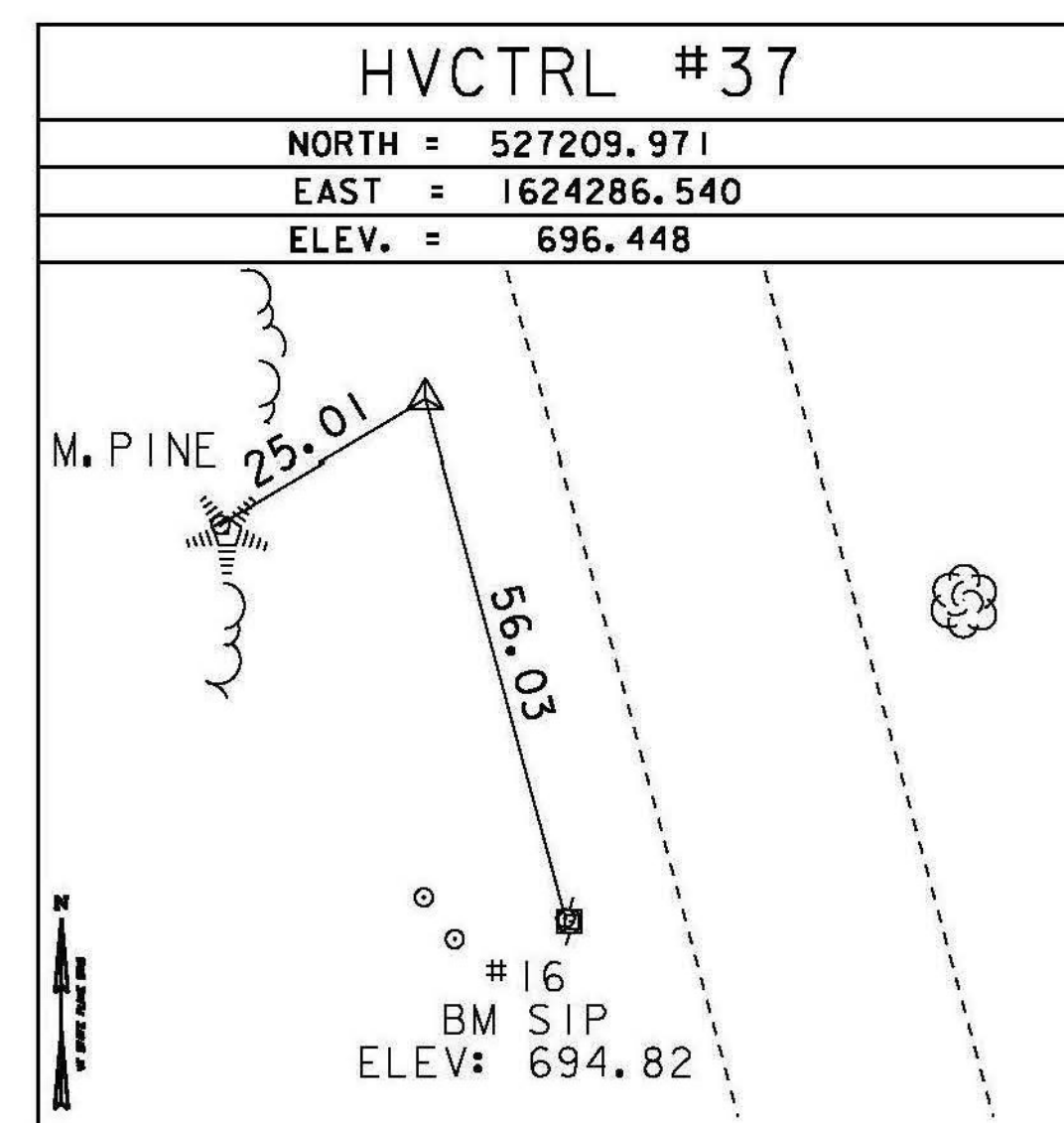
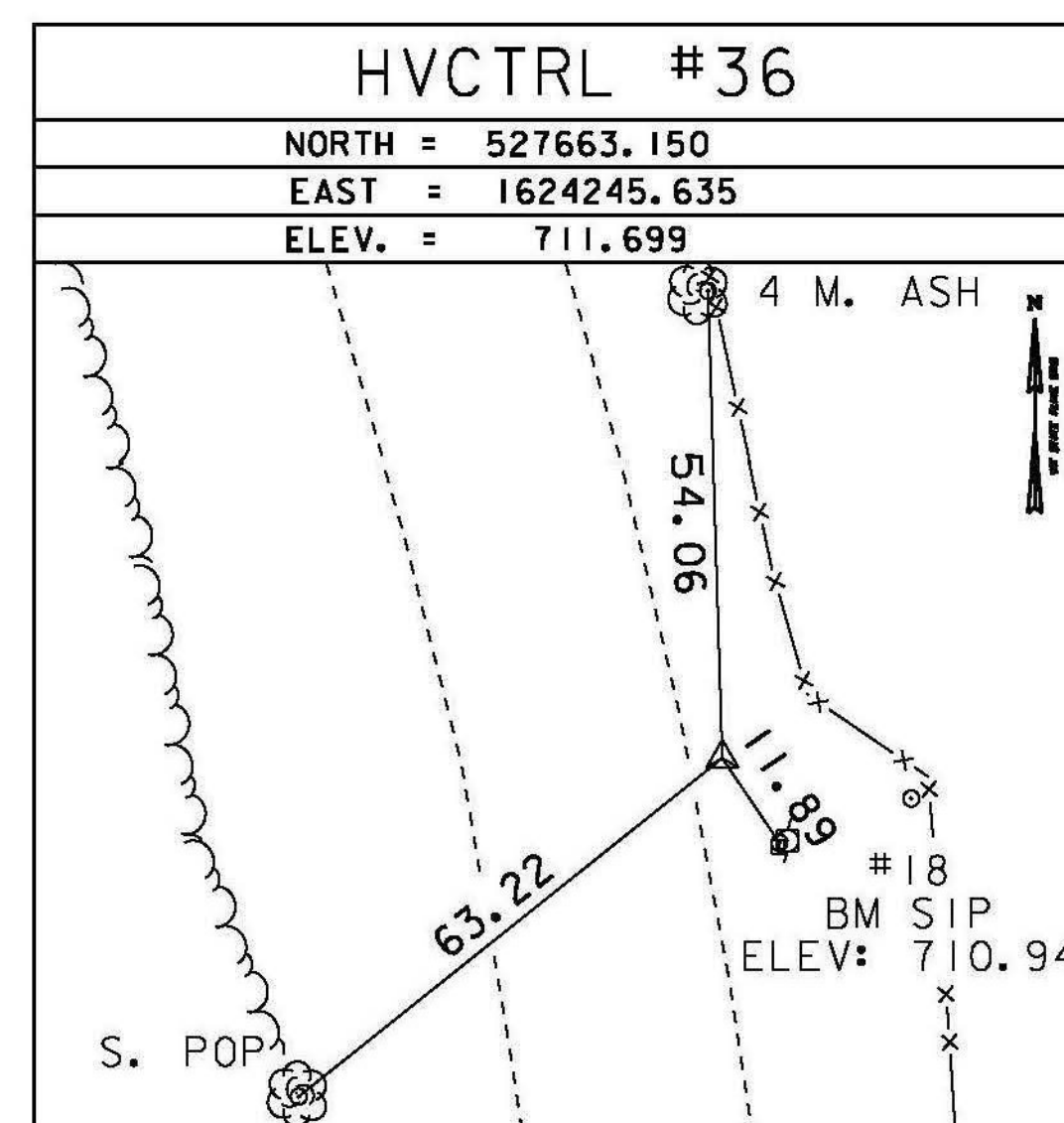
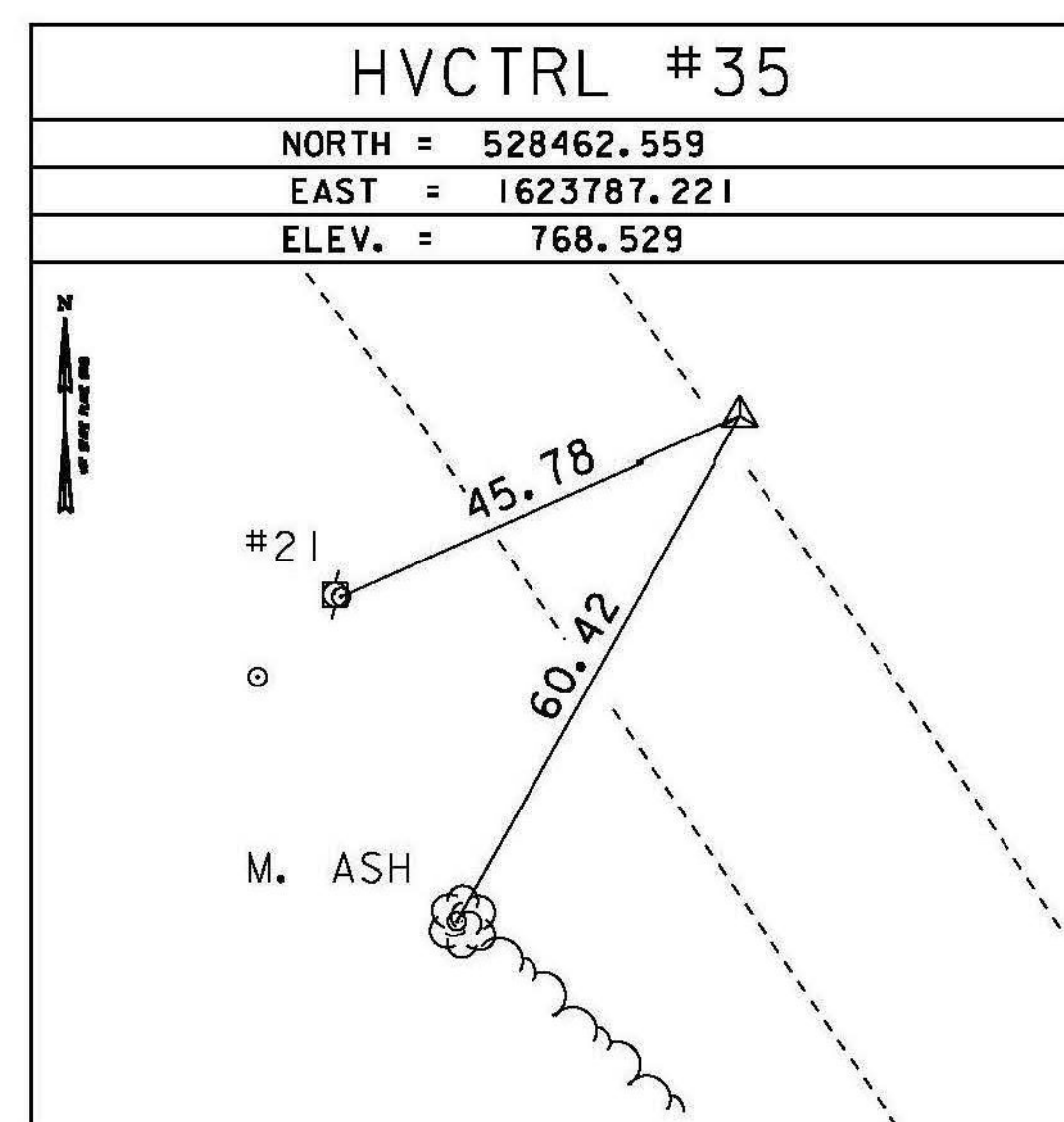
HVCTRL #94

MARILYN
 NORTH = 529655.383
 EAST = 1622886.574
 ELEV. = 902.151

GENERAL LOCATION, RANDOLPH, VT. OWNERSHIP, MARILYN SARGEANT, 5982 VT ROUTE 66, RANDOLPH CENTER, VT 05061. TO REACH FROM THE INTERSECTION OF VT ROUTE 66 AND VT ROUTE 14 IN EAST RANDOLPH GO WEST ALONG VT ROUTE 66 FOR 1.2 MI (1.9 KM) TO THE SITE OF THE MARK ON THE LEFT IN A LAWN. TO REACH FROM THE VT ROUTE 66 BRIDGE OVER INTERSTATE 89 AT EXIT 4 GO SOUTHEAST ALONG VT ROUTE 66 FOR 0.8 MI (1.3 KM) TO THE INTERSECTION OF EAST BETHEL ROAD RIGHT AND VT ROUTE 66 (MAIN STREET) LEFT, AT THE MAIN ENTRANCE TO VERMONT TECHNICAL COLLEGE. TURN LEFT AND GO NORTH ALONG VT ROUTE 66 FOR 3.1 MI (5.0 KM) TO THE SITE OF THE MARK. THE MARK IS SET 10 CM (4 INCHES) BELOW GROUND SURFACE IN THE TOP OF A FENO STYLE. IT IS 20.6 M (67.6 FT) WEST OF AND ABOUT 1.5 M (4.9 FT) HIGHER THAN THE CENTERLINE OF VT ROUTE 66, 35.3 M (115.8 FT) (SLOPE) EAST OF POLE NO 701/24/17, 28.3 WEST-NORTHWEST OF AND ACROSS THE ROAD FROM POLE NO 24X AND 29.1 M (95.5 FT) (SLOPE) EAST-SOUTHEAST OF AN UNNUMBERED POLE.

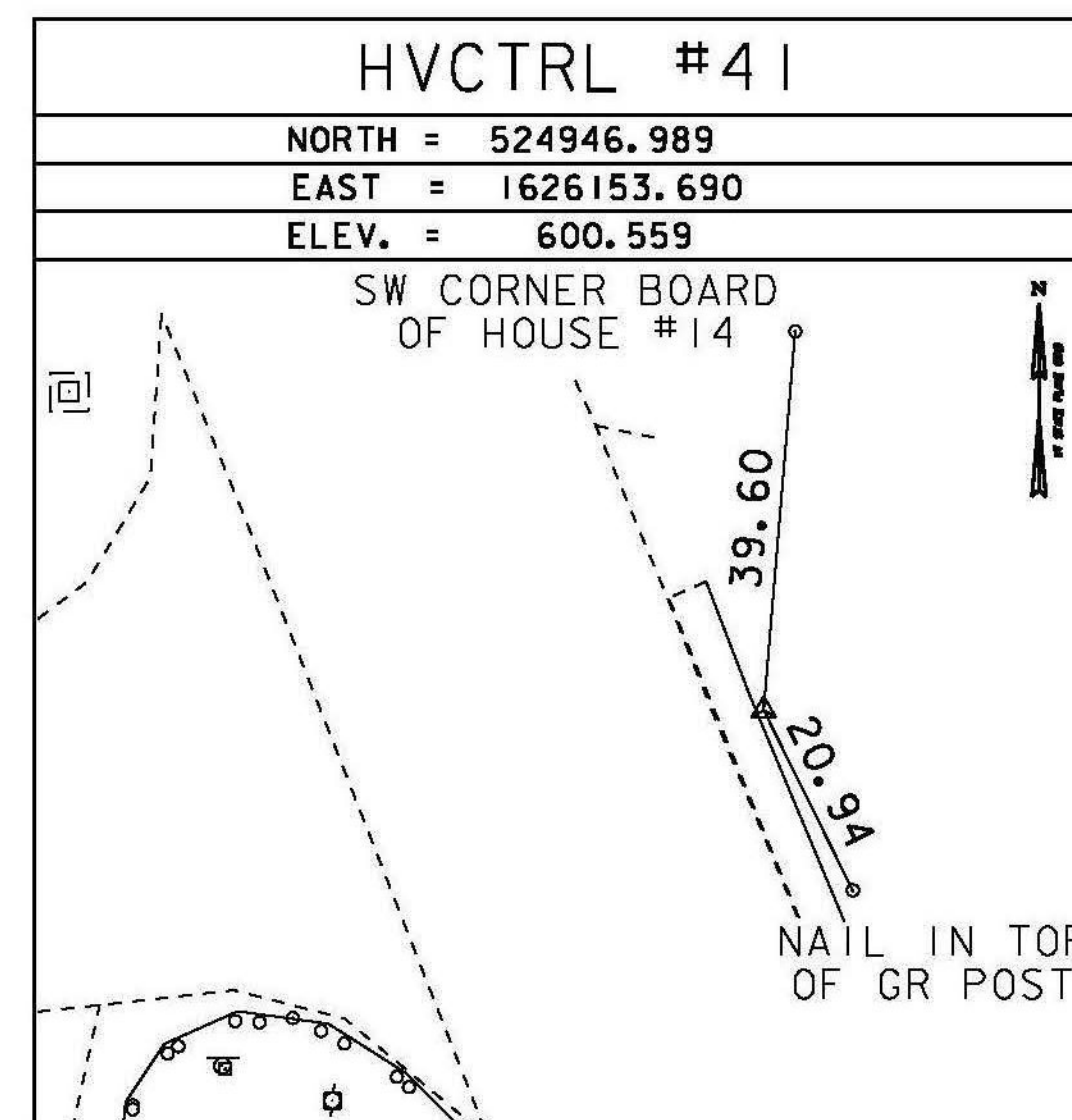
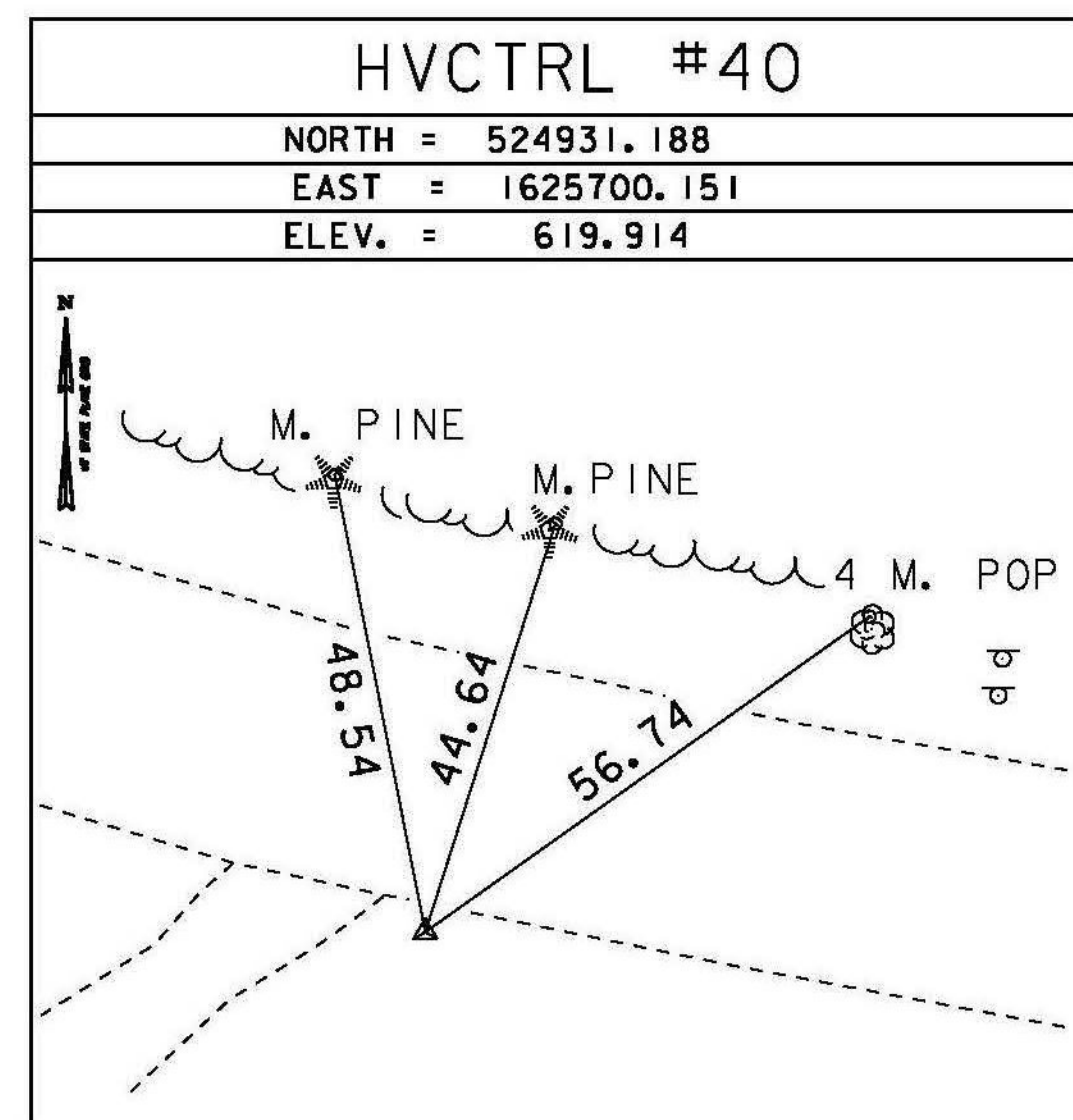


TRAVERSE TIES



* MAIN TRAVERSE COMPLETED 12/29/2011 BY R. GILMAN P.C. & P. WINTERS & C. CYR

ALIGNMENT TIES



GPS CONTROL POINTS

HVCTRL #95

A00036
 NORTH = 524850.698
 EAST = 1626195.520
 ELEV. = 601.912

GENERAL LOCATION, RANDOLPH, VT., IN THE VILLAGE OF EAST RANDOLPH. TO REACH FROM THE INTERSECTION OF VT ROUTE 14 AND VT ROUTE 66 IN EAST RANDOLPH GO SOUTH ALONG VT ROUTE 14 FOR ABOUT 30 M (98.4 FT) TO THE SOUTH END OF THE VT ROUTE 14 BRIDGE OVER THE SECOND BRANCH OF THE WHITE RIVER AND THE SITE OF THE MARK ON THE LEFT, SET IN THE TOP OF THE ABUTMENT AT THE SOUTHWEST CORNER OF THE BRIDGE. IT IS 8.0 M (26.2 FT) EAST OF AND ABOUT 0.2 M (0.7 FT) HIGHER THAN THE CENTERLINE OF VT ROUTE 14, 0.1 M (0.3 FT) SOUTHWEST OF THE NORTHEAST FACE OF THE WING WALL AND 0.3 M (1.0 FT) NORTH OF THE SOUTH END OF THE ABUTMENT. NOTE, MARK HAS A GOOD GPS WINDOW BUT A DIFFICULT TRIPOD SETUP.

DATUM	
VERTICAL	NAVD 88
HORIZONTAL	NAD 83 (07)
ADJUSTMENT	COMPASS

NOT TO SCALE

PROJECT NAME:	RANDOLPH
PROJECT NUMBER:	STP 2932(I)
FILE NAME:	survey\10c270+1.dgn
PROJECT LEADER:	M. FOWLER
DESIGNED BY:	VAOT
TIE SHEET	4
PLOT DATE:	6/5/2014
DRAWN BY:	R. BULLOCK
CHECKED BY:	VAOT
SHEET	7 OF 276