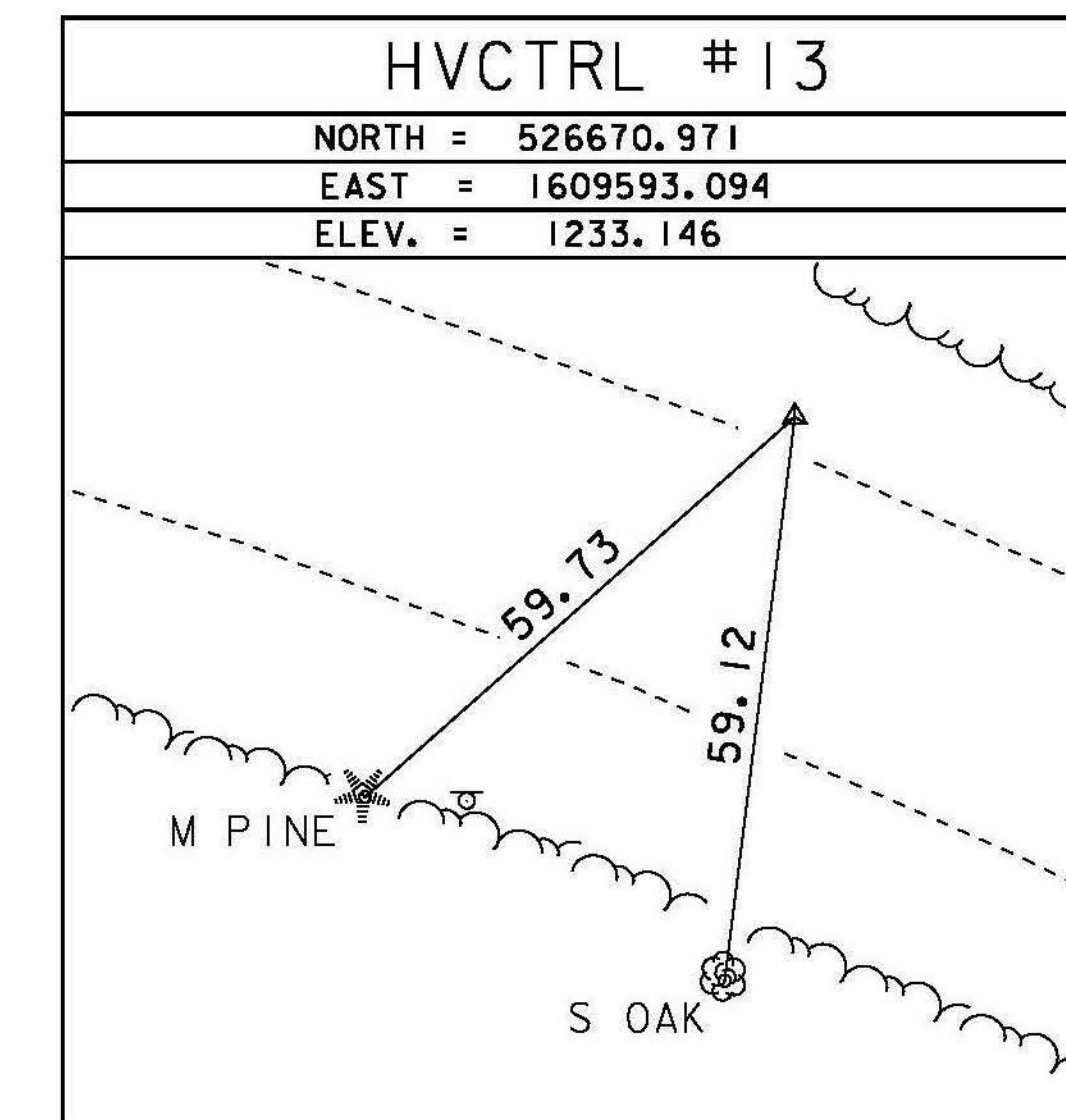
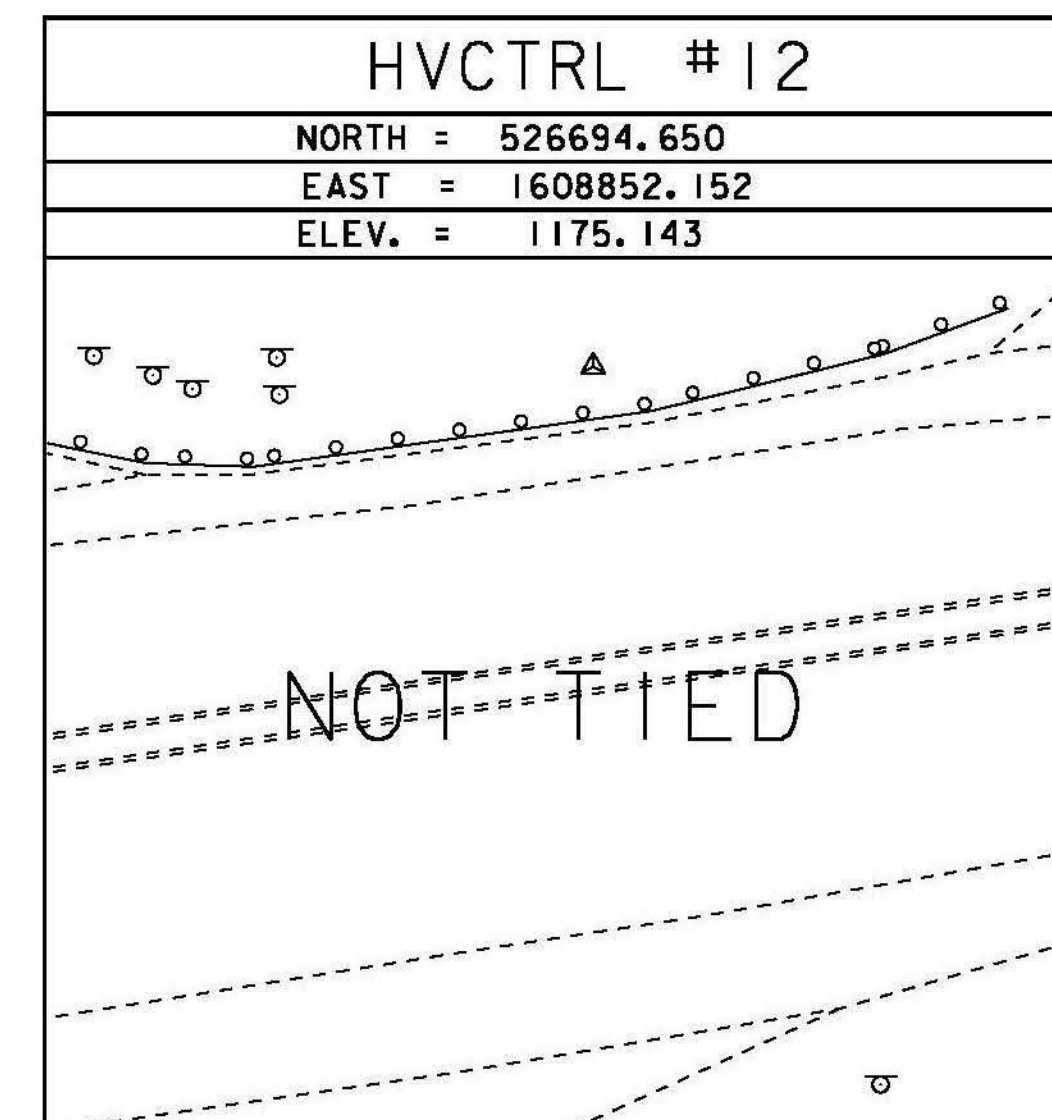


GPS CONTROL POINTS

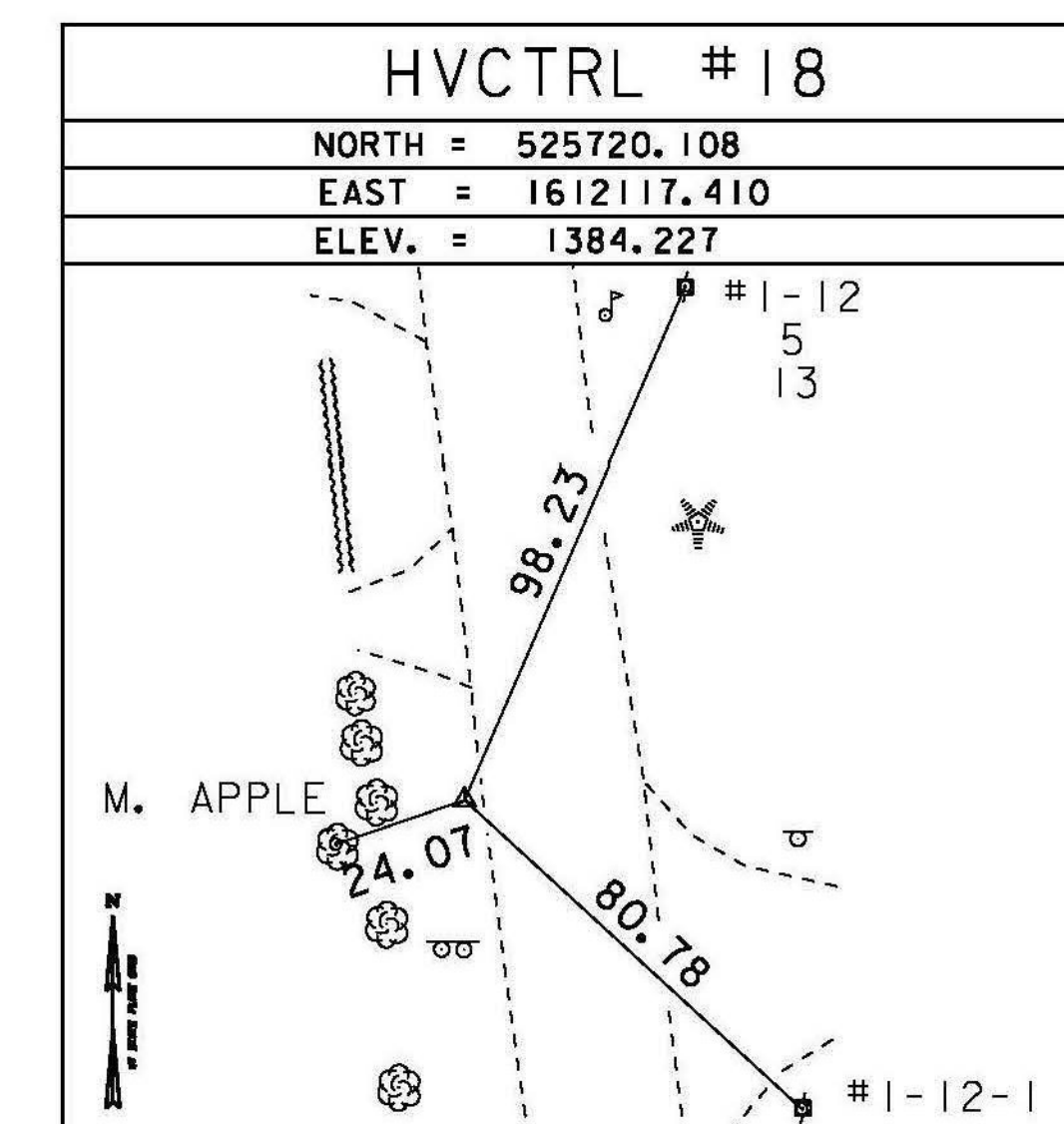
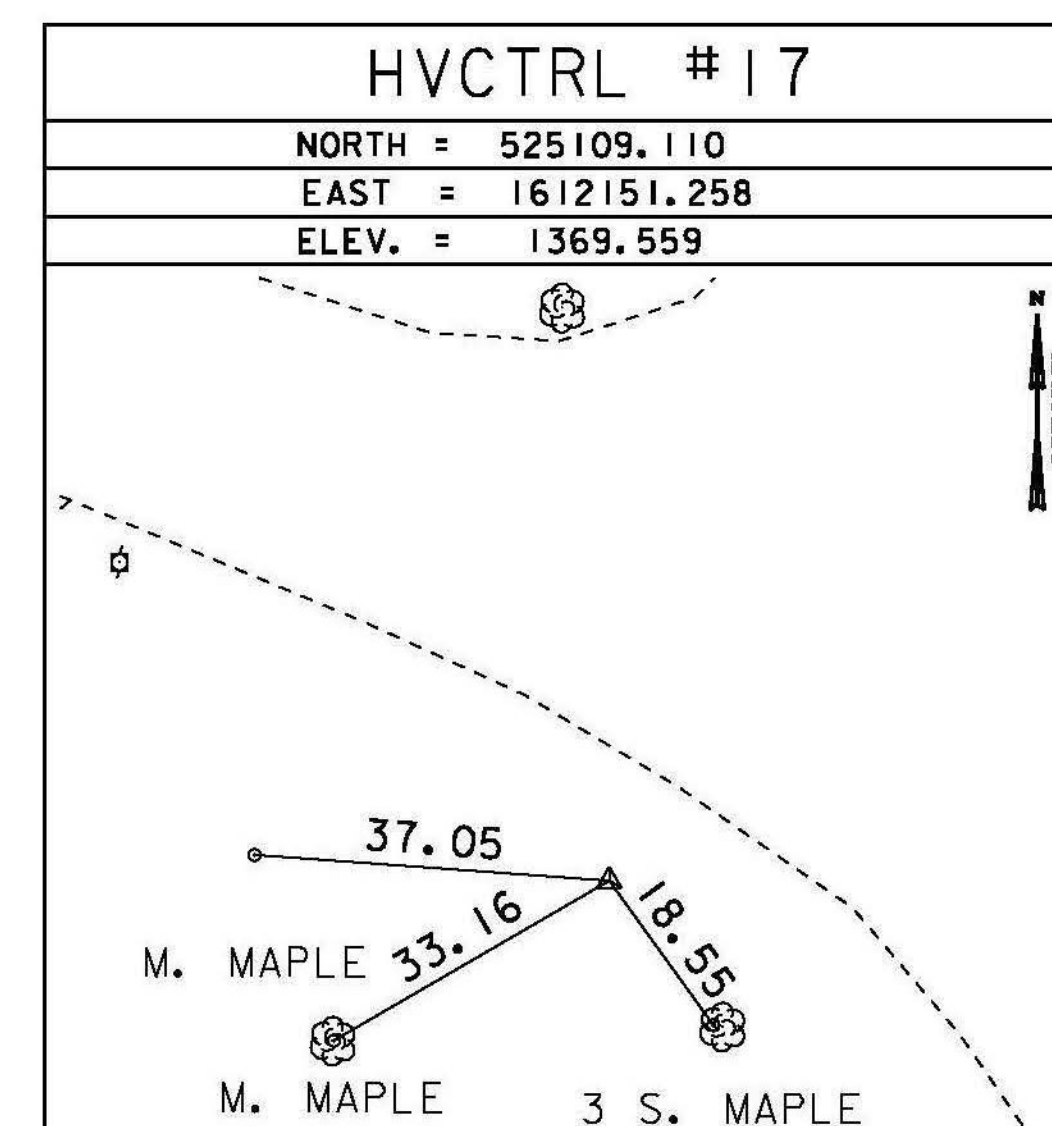
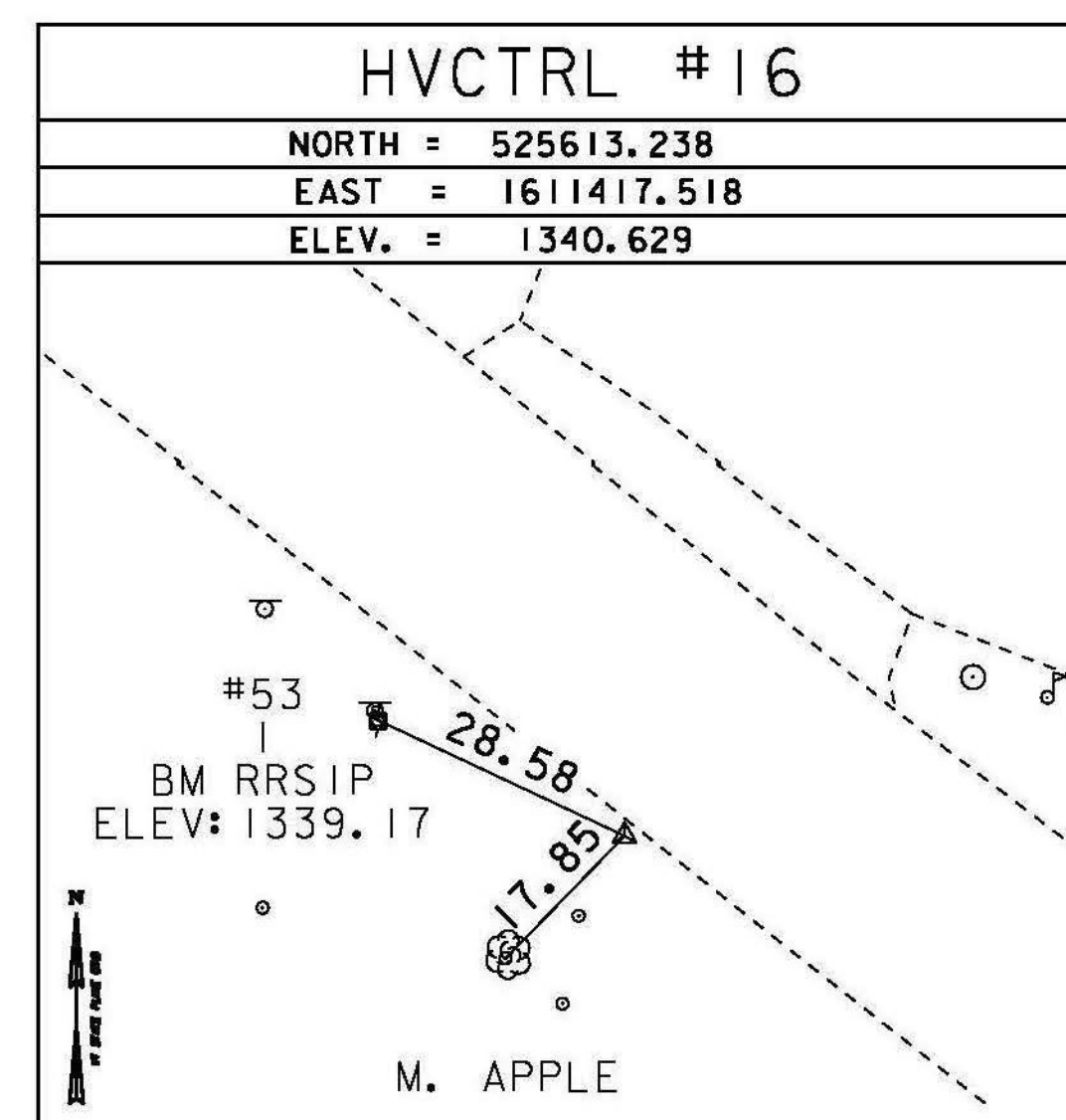
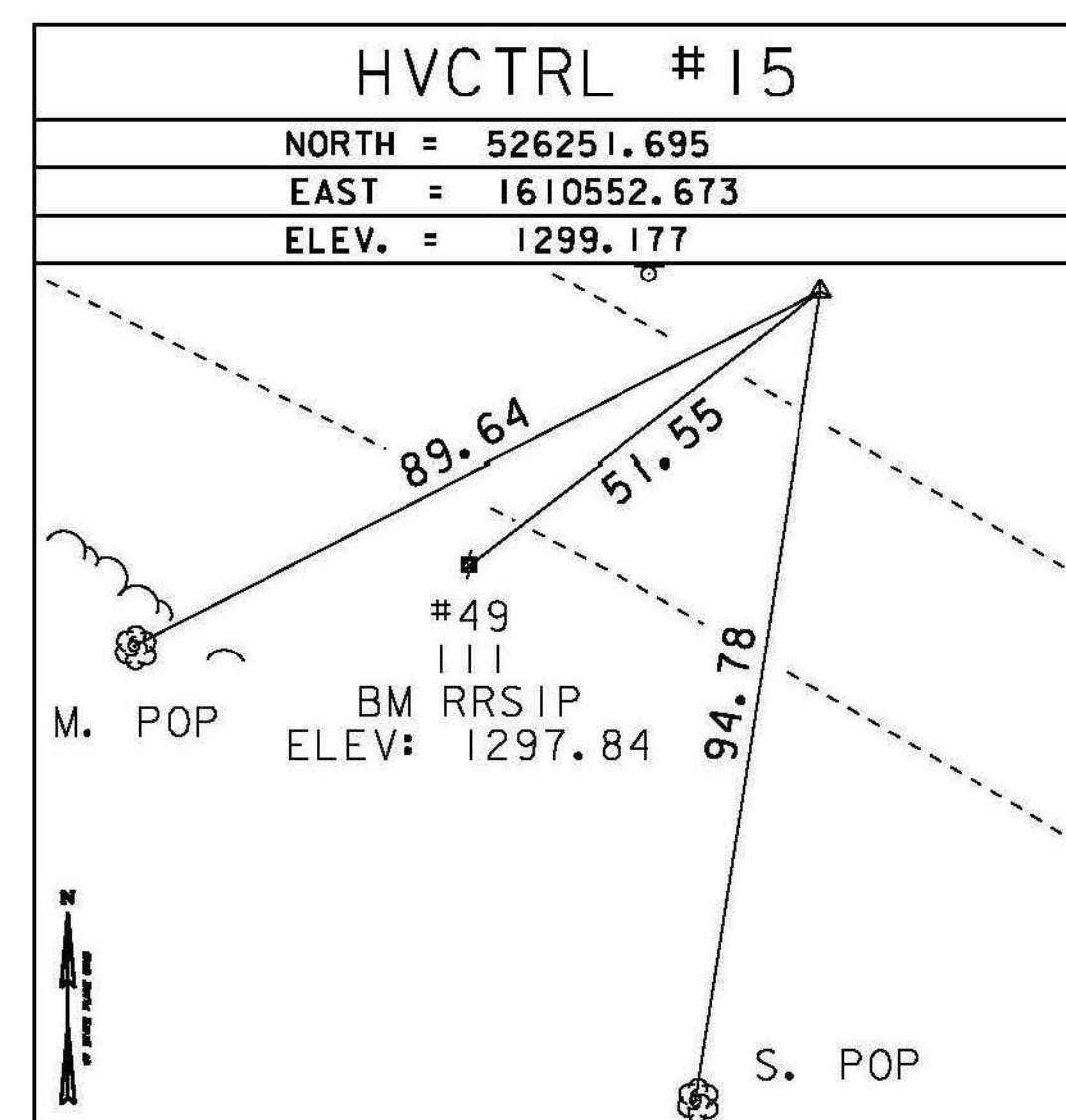
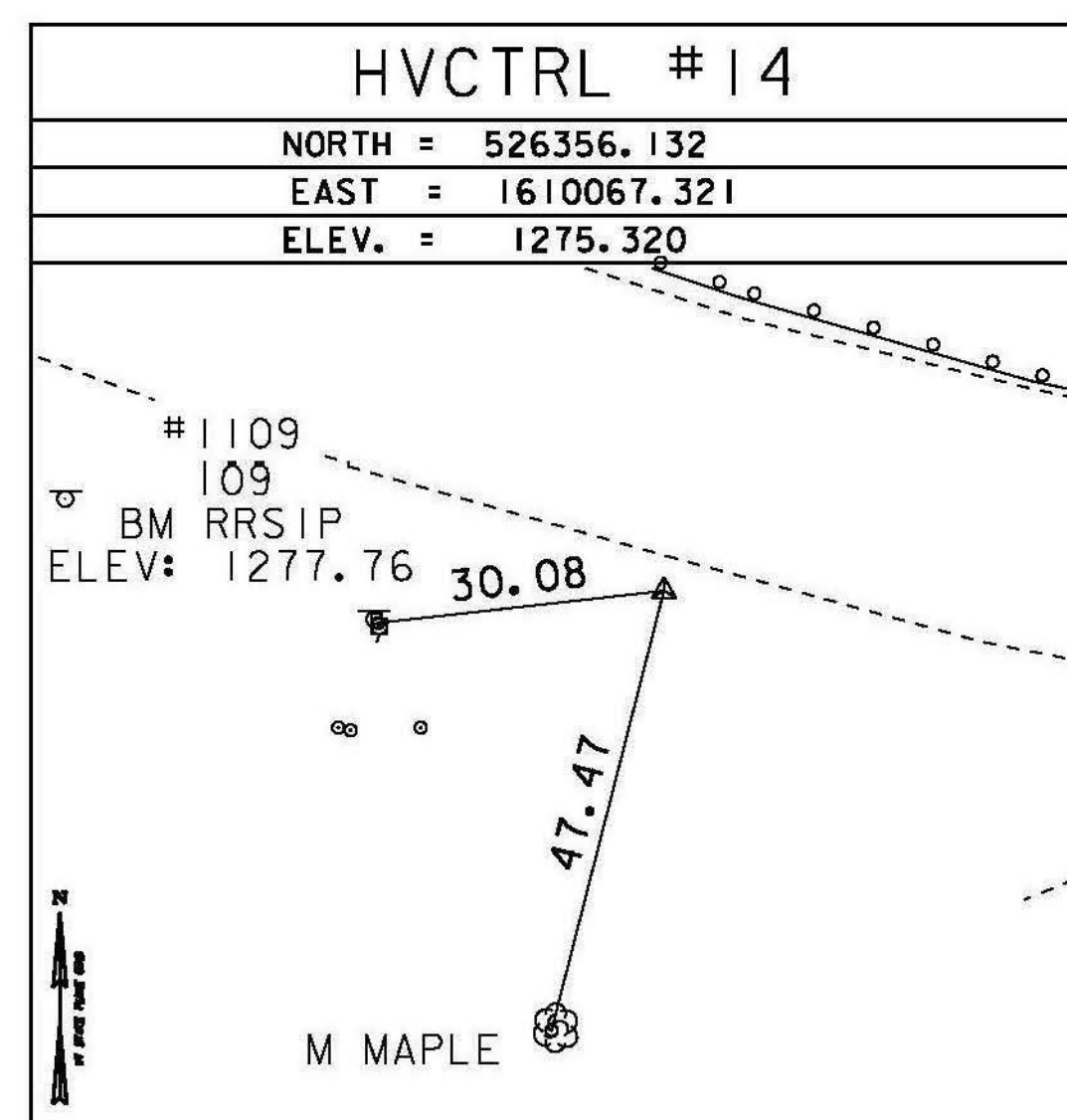
HVCTRL #11

RANDOLPH 1 89  
 NORTH = 525876.610  
 EAST = 1607152.180  
 ELEV. = 1094.540

GENERAL LOCATION, RANDOLPH, 0.8 MI (1.3 KM) WEST OF RANDOLPH CENTER, 7.9 MI (12.7 KM) NORTH NORTHEAST OF BETHEL. OWNERSHIP, DAVID THRELKELD COMPANY. TO REACH FROM THE VT ROUTE 66 BRIDGE OVER 189 GO WEST ALONG VT ROUTE 66 FOR 0.25 MI (0.40 KM) TO THE WHALES TAILS SCULPTURES AND STATION SITE ON THE LEFT. STATION MARK IS SET IN THE TOP OF A LEDGE OUTCROP. IT IS 172 FT (52.4 M) SOUTH OF THE CENTERLINE OF ROUTE 66, 14 FT (4.3 M) WEST OF THE CENTER OF A STONE WALL, 59 FT (18.0 M) NORTHEAST OF THE CENTER OF THE MOST NORTHERLY WHALES TAIL, 91.5 FT (27.9 M) SOUTH SOUTHWEST OF A 4-INCH CONCRETE HIGHWAY BOUND, 12.5 FT (3.8 M) WEST OF A FIBERGLASS WITNESS POST.



TRAVERSE TIES



\* MAIN TRAVERSE COMPLETED 12/29/2011 BY R. GILMAN P.C. & P. WINTERS & C. CYR

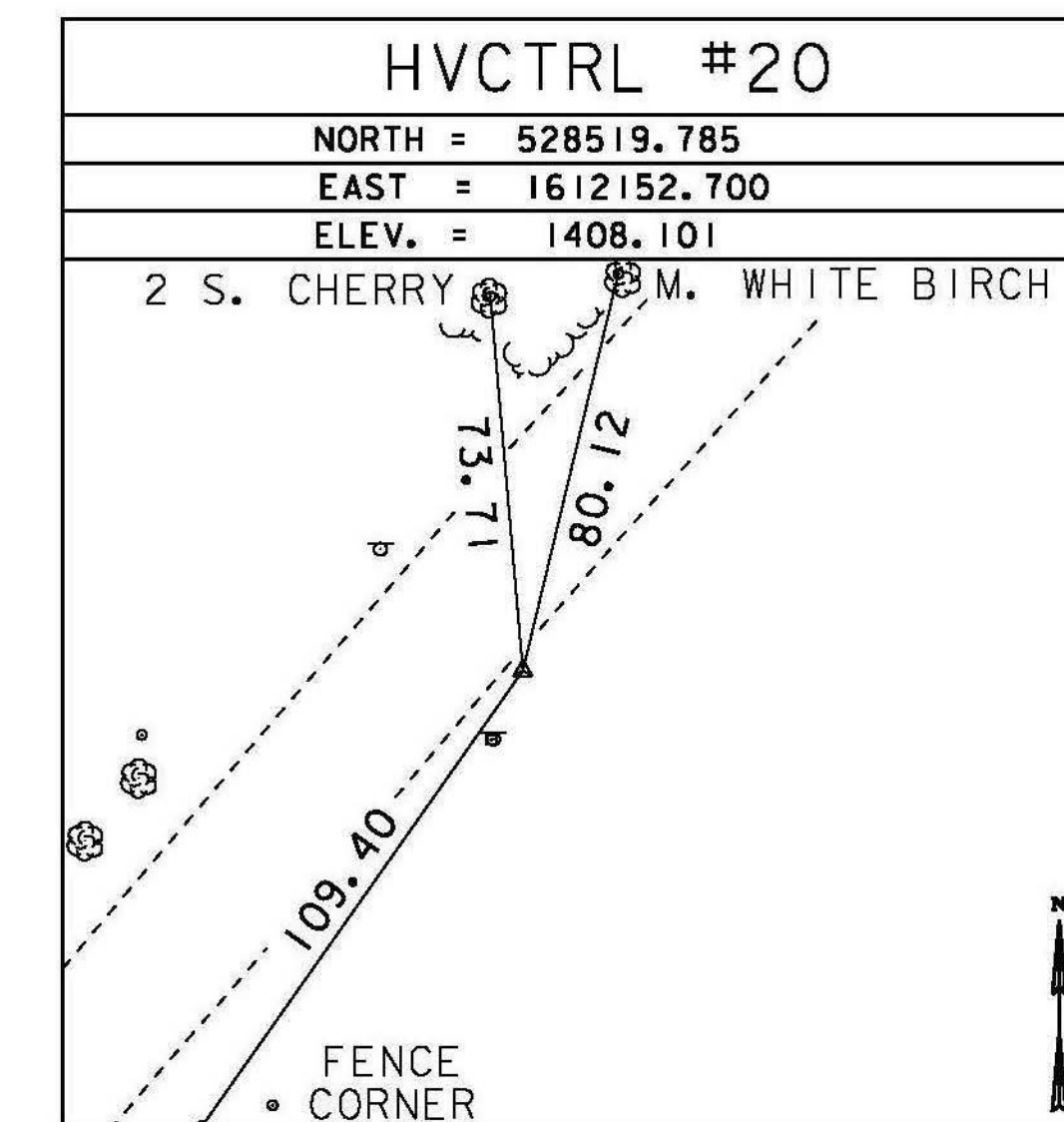
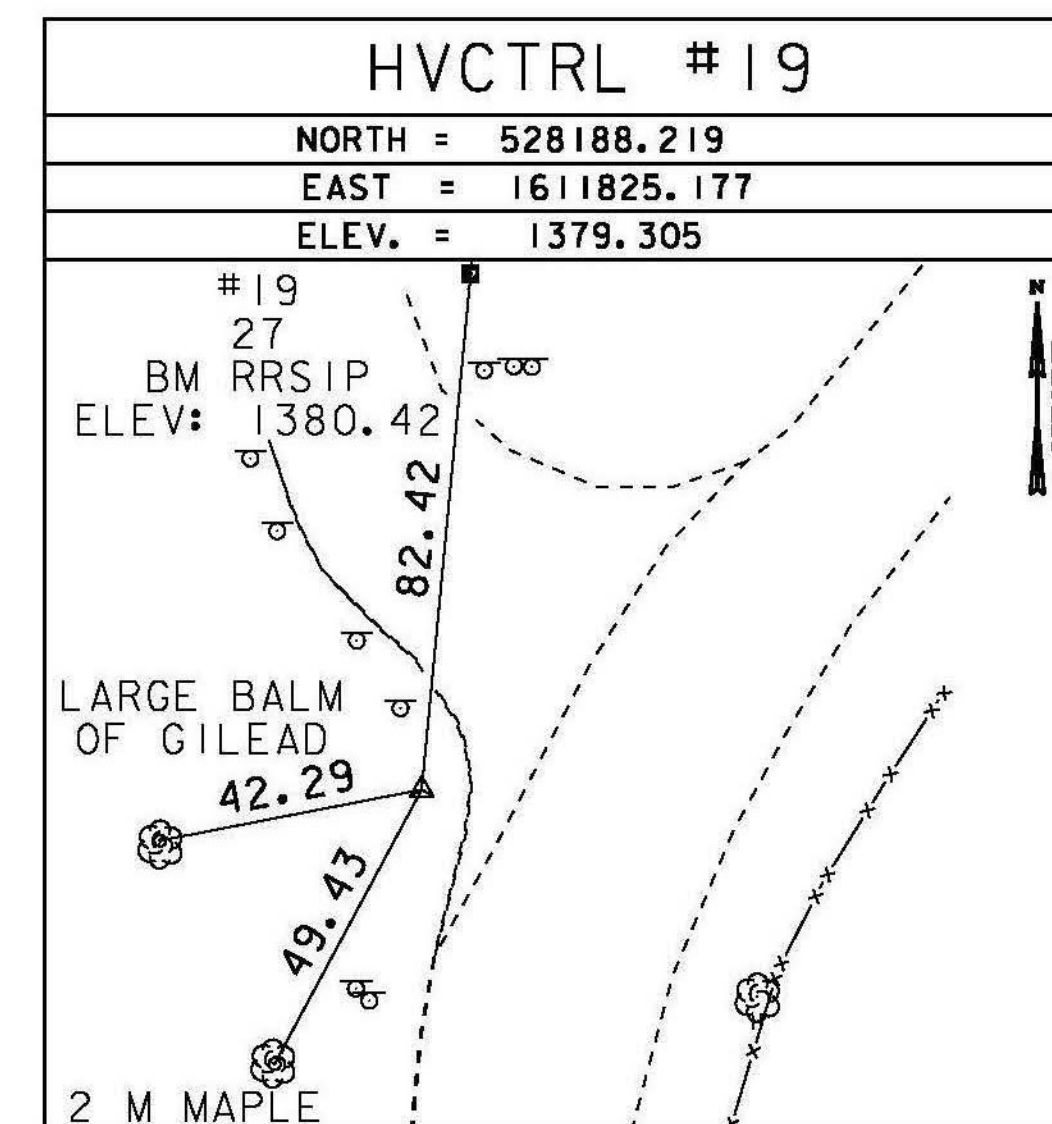
GPS CONTROL POINTS

HVCTRL #92

VTC HARN AZ  
 NORTH = 526280.540  
 EAST = 1614452.641  
 ELEV. = 1308.756

THE STATION IS LOCATED ABOUT 1.6 KM (1.00 MI) SOUTHEAST OF INTERSTATE HIGHWAY 89, IN THE TOWN OF RANDOLPH AND AT THE VERMONT TECHNICAL COLLEGE. OWNERSHIP--STATE OF VERMONT, CONTACT DICK ETHIER, DIRECTOR OF PHYSICAL PLANT, VERMONT TECHNICAL COLLEGE, RANDOLPH CENTER VT 05061, PHONE 802-728-3391. TO REACH THE STATION FROM THE JUNCTION OF INTERSTATE HIGHWAY 89 AND VERMONT ROUTE 66 IN RANDOLPH, GO EAST ON HIGHWAY 66 FOR 1.29 KM (0.80 MI) TO AN INTERSECTION. TURN RIGHT AND GO SOUTH ALONG A PAVED ROAD FOR 0.24 KM (0.15 MI) TO A FORK. TAKE THE LEFT FORK AND GO SOUTHEAST ALONG A PAVED ROAD LEADING TO SOUTH RANDOLPH FOR 0.24 KM (0.15 MI) TO THE SOUTH ENTRANCE TO VERMONT TECHNICAL COLLEGE (TO HARTNESS LIBRARY), TURN LEFT AND GO EAST THEN NORTH ALONG ENTRANCE DRIVE FOR 0.24 KM (0.15 MI) TO A LARGE PARKING LOT. CONTINUE NORTH ACROSS PARKING LOT FOR 0.05 MI (0.08 KM) TO THE NORTH END OF THE PARKING LOT AND THE STATION. STATION IS A STATE OF VERMONT DISK SET IN THE TOP OF A ROCK OUTCROP FLUSH WITH THE SURFACE OF THE GROUND IN A MOWED LAWN. LOCATED ABOUT 110 FT (33.5 M) EAST OF AND IN LINE WITH THE SOUTH WALL OF THE HARTNESS LIBRARY, 3.35 MNORTH OF THE NORTH EDGE OF THE PARKING LOT, 17.37 M (56.99 FT) WEST OF THE CENTER OF A FIRE HYDRANT AND 13.56 M (44.49 FT) EAST-SOUTHEAST OF THE CENTER OF A LIGHT POLE.

ALIGNMENT TIES



NOT TO SCALE

DATUM	
VERTICAL	NAVD 88
HORIZONTAL	NAD 83 (07)
ADJUSTMENT	COMPASS

PROJECT NAME: RANDOLPH	
PROJECT NUMBER: STP 2932(I)	
FILE NAME: survey\10c270+1.dgn	PLOT DATE: 6/5/2014
PROJECT LEADER: M. FOWLER	DRAWN BY: R. BULLOCK
DESIGNED BY: VAOT	CHECKED BY: VAOT
TIE SHEET 2	SHEET 5 OF 276