

GPS CONTROL POINTS

HVCTRL #1

STONELEIGH
NORTH = 518909.520
EAST = 1601205.370
ELEV. = 668.250

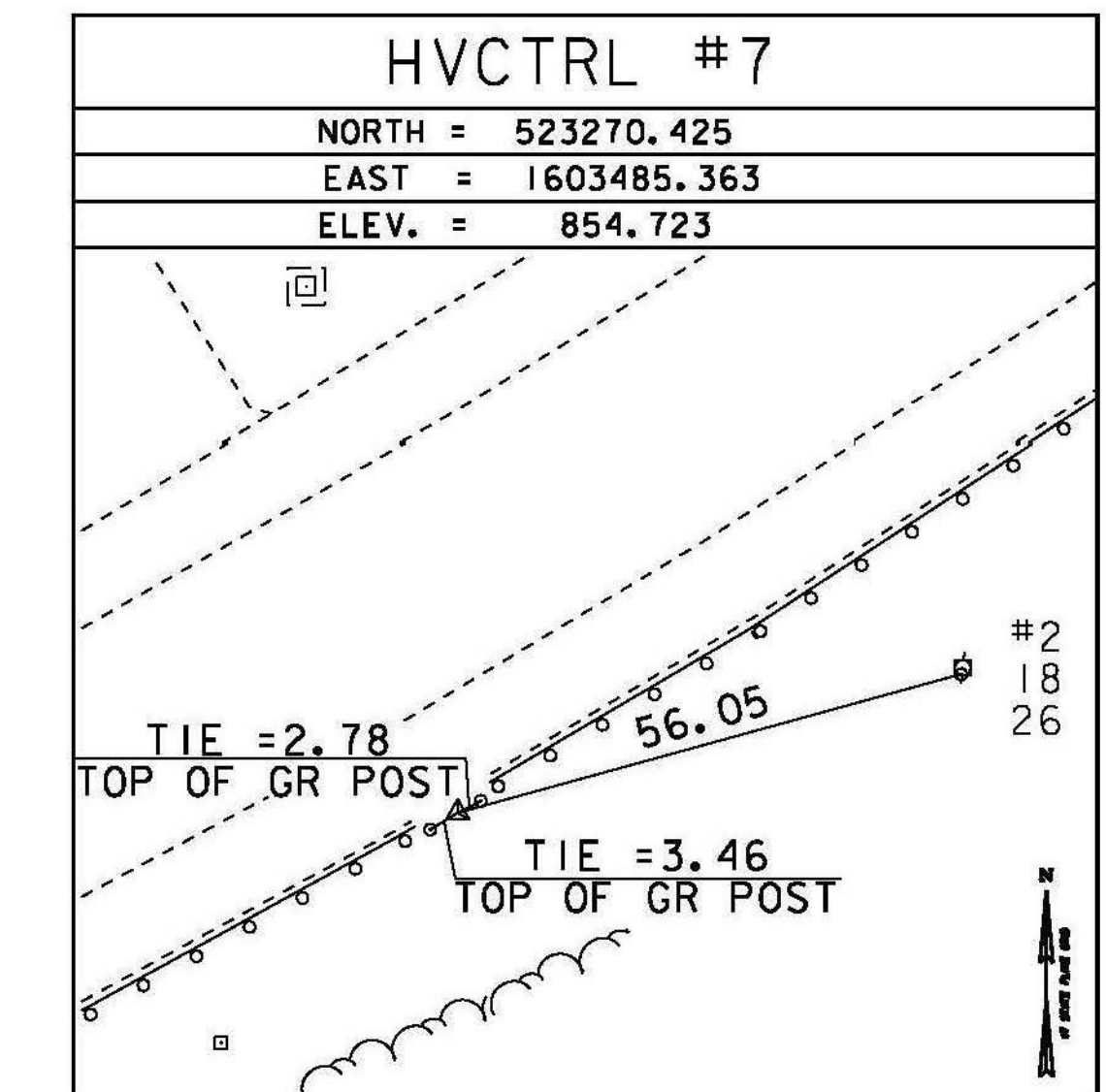
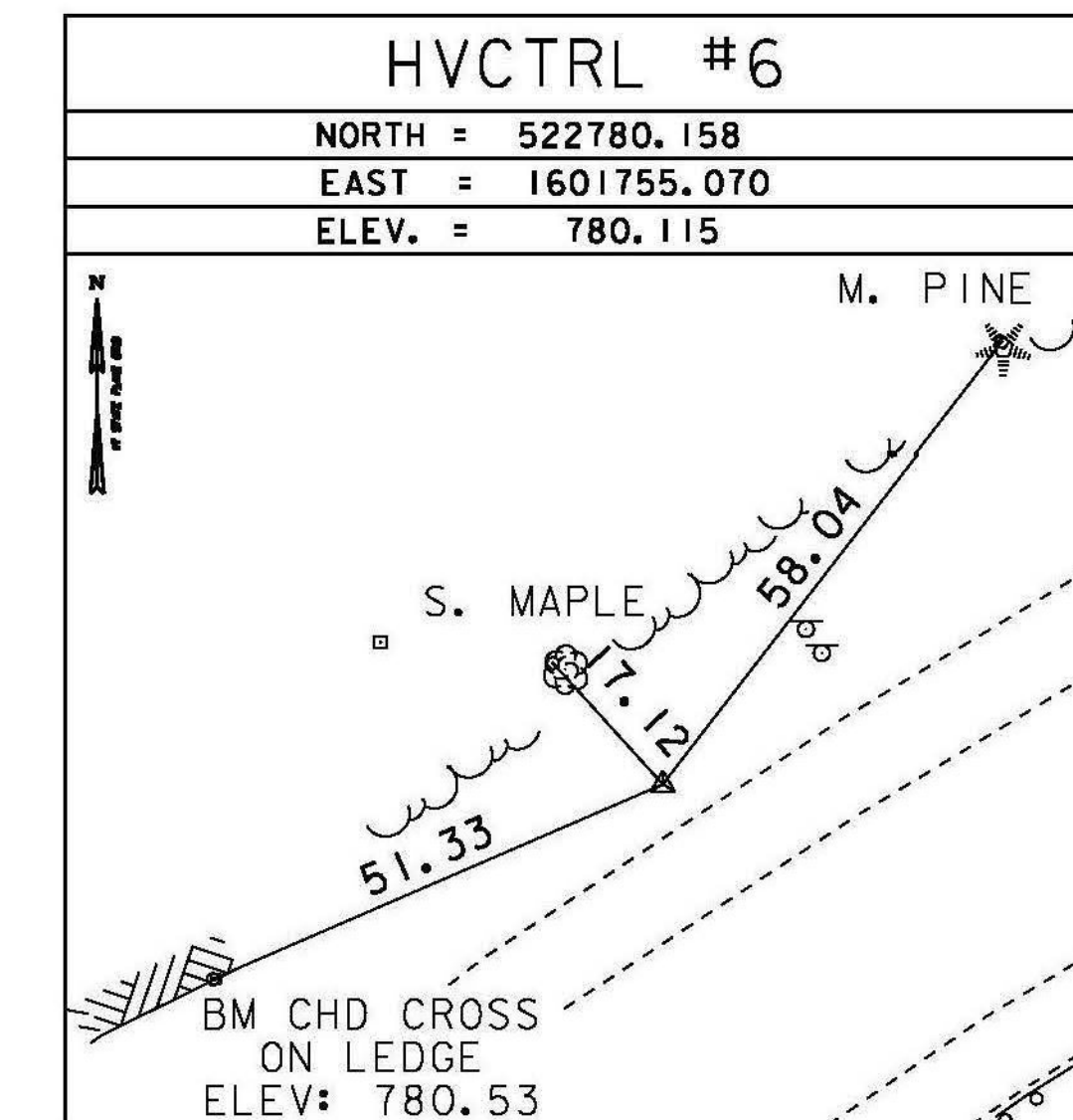
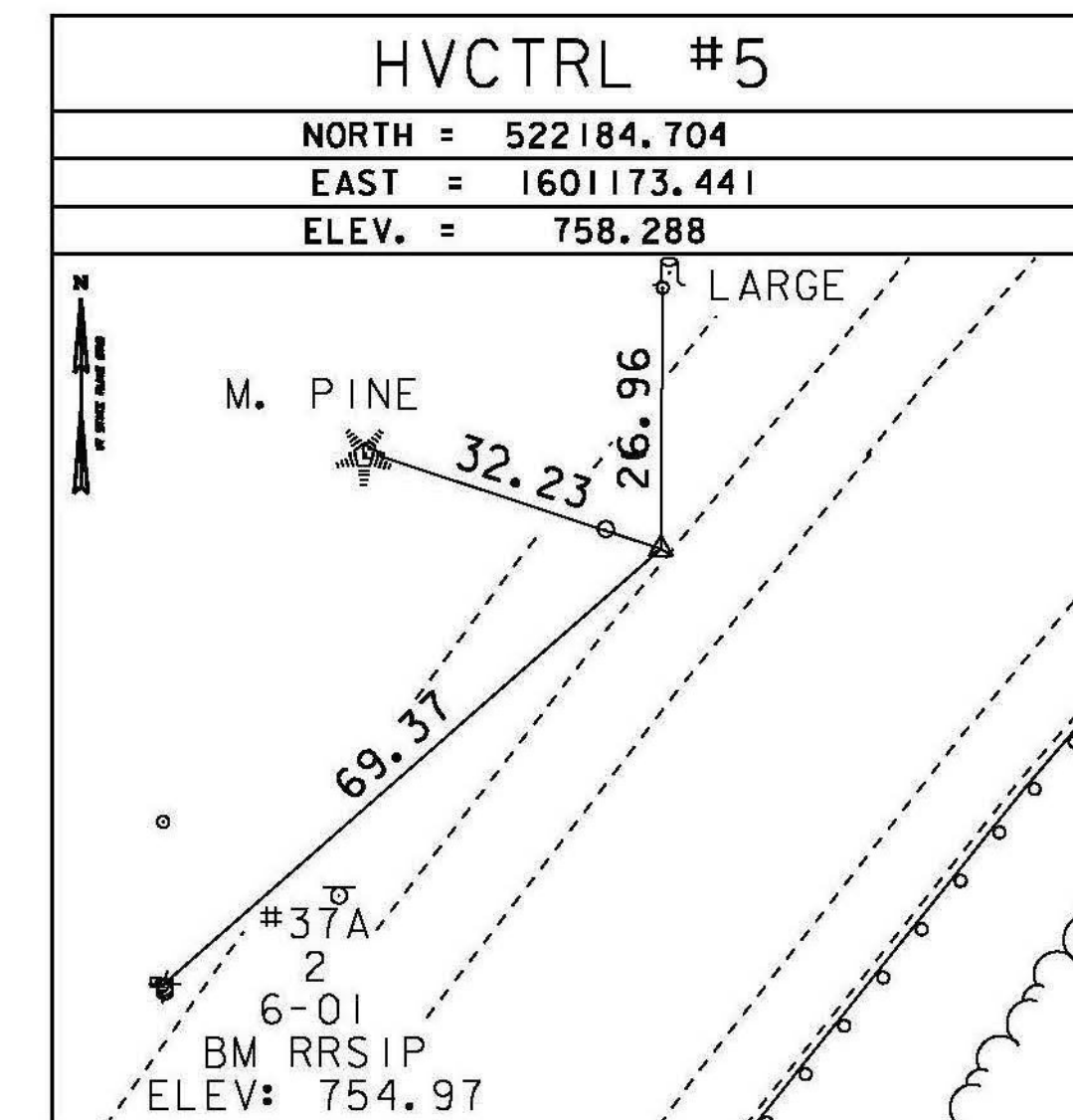
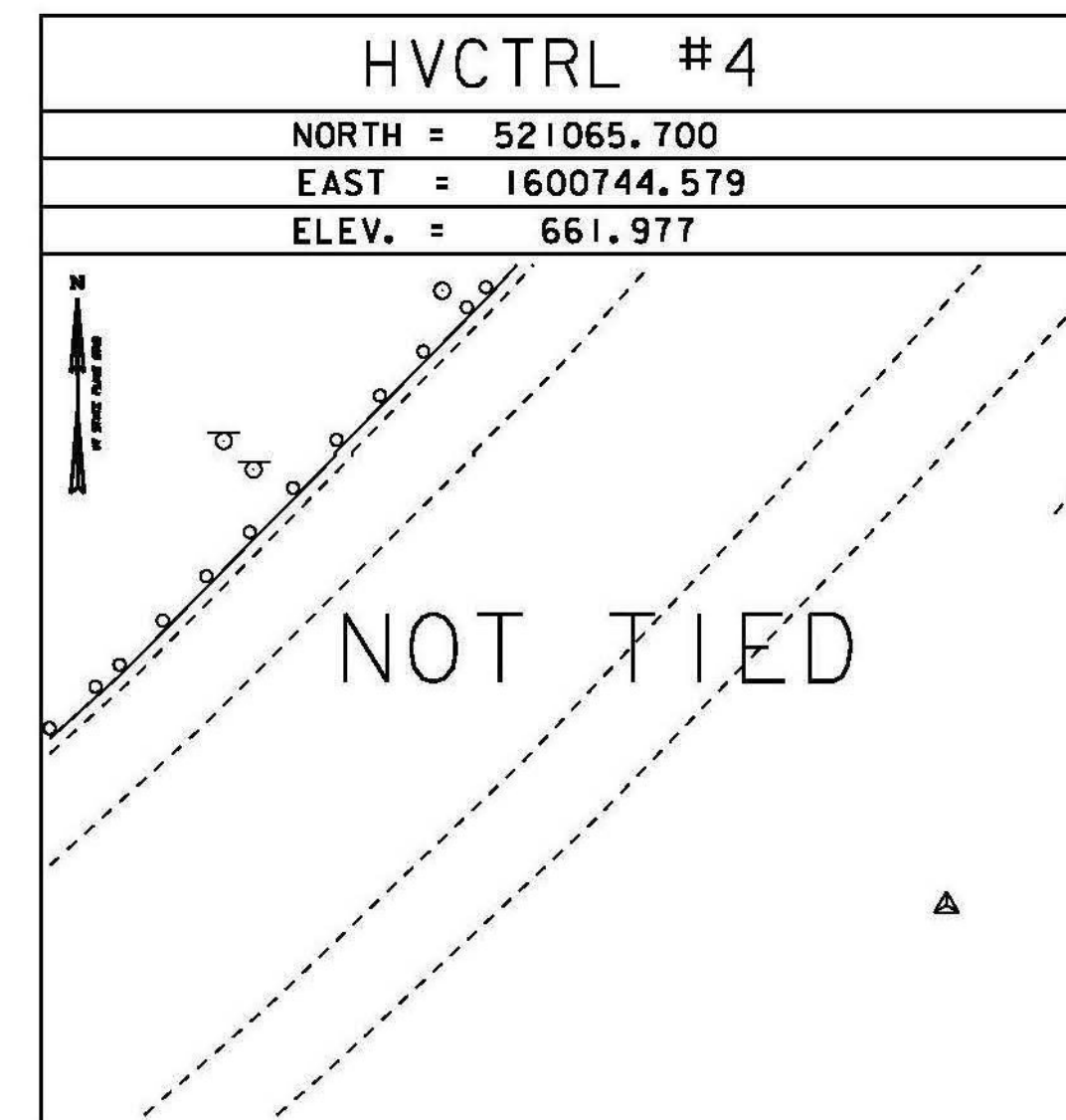
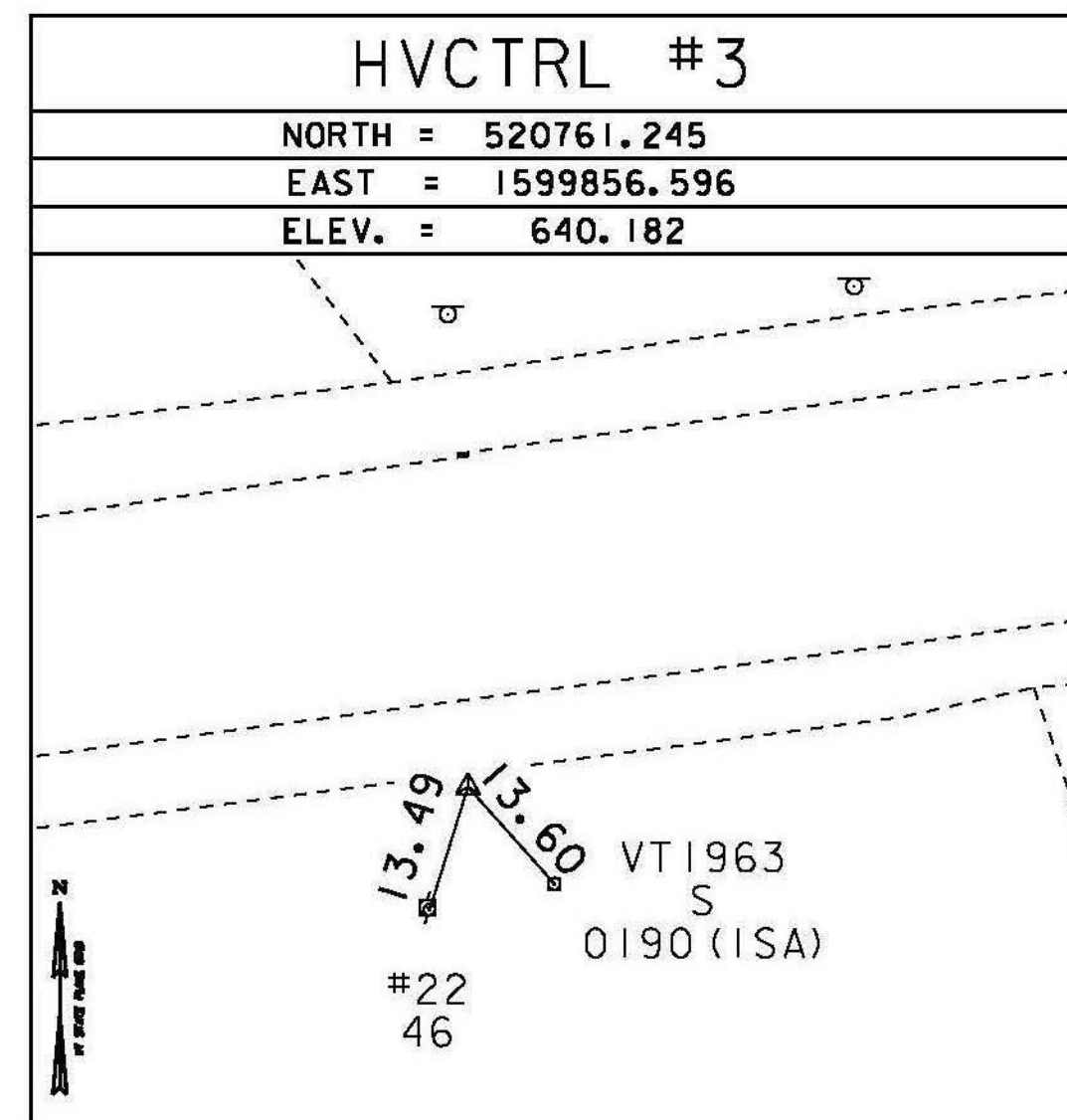
GENERAL LOCATION, RANDOLPH, 2.5 MI (4.0 KM) WEST SOUTHWEST OF RANDOLPH CENTER, 6.5 MI (10.5 KM) NORTH OF BETHEL. OWNERSHIP, GREEN MOUNTAIN STOCK FARM, CONTACT AL GEIBEL, RD 2 STOCK FARM ROAD, RANDOLPH, VT. 05060. TO REACH FROM THE WEST END OF THE VT ROUTE 66 BRIDGE OVER 189 GO WEST ALONG VT ROUTE 66 FOR 1.8 MI (2.9 KM) TO THE INTERSECTION OF STOCK FARM ROAD LEFT. TURN LEFT AND GO SOUTH ALONG STOCK FARM ROAD FOR 0.4 MI (0.6 KM) TO THE U-SHAPED DRIVEWAY TO THE STONELEIGH FARM RIGHT. TURN RIGHT AND GO WEST ALONG U-SHAPED DRIVE FOR 0.05 MI (0.08 KM) TO THE STONELEIGH EQUIPMENT BARN AND SITE OF MARK ON A MOWED BUTTE SOUTH OF THE BARN. STATION MARK IS A SET IN THE TOP OF A 30-CM DIAMETER CONCRETE MONUMENT FLUSH WITH GROUND SURFACE. IT IS 115 FT (35.1 M) SOUTHWEST OF THE CENTERLINE OF THE U-SHAPED DRIVE AT A BEND IN THE DRIVE, 114.5 FT (34.9 M) WEST OF THE NORTHWEST CORNER OF A WOOD RAIL FENCE, 116 FT (35.4 M) SOUTH SOUTHWEST OF THE SOUTHEAST CORNER OF THE STONELEIGH EQUIPMENT BARN, 66 FT (20.1 M) NORTHWEST OF A 15-INCH CHERRY, 62.5 FT (19.1 M) NORTH OF POLE NO. 10/2/10, 4 FT (1.2 M) EAST OF A FIBERGLASS WITNESS POST AT THE TOP OF A STEEP BANK.

HVCTRL #2

STONELEIGH AZ MK
NORTH = 520762.500
EAST = 1600022.530
ELEV. = 640.300

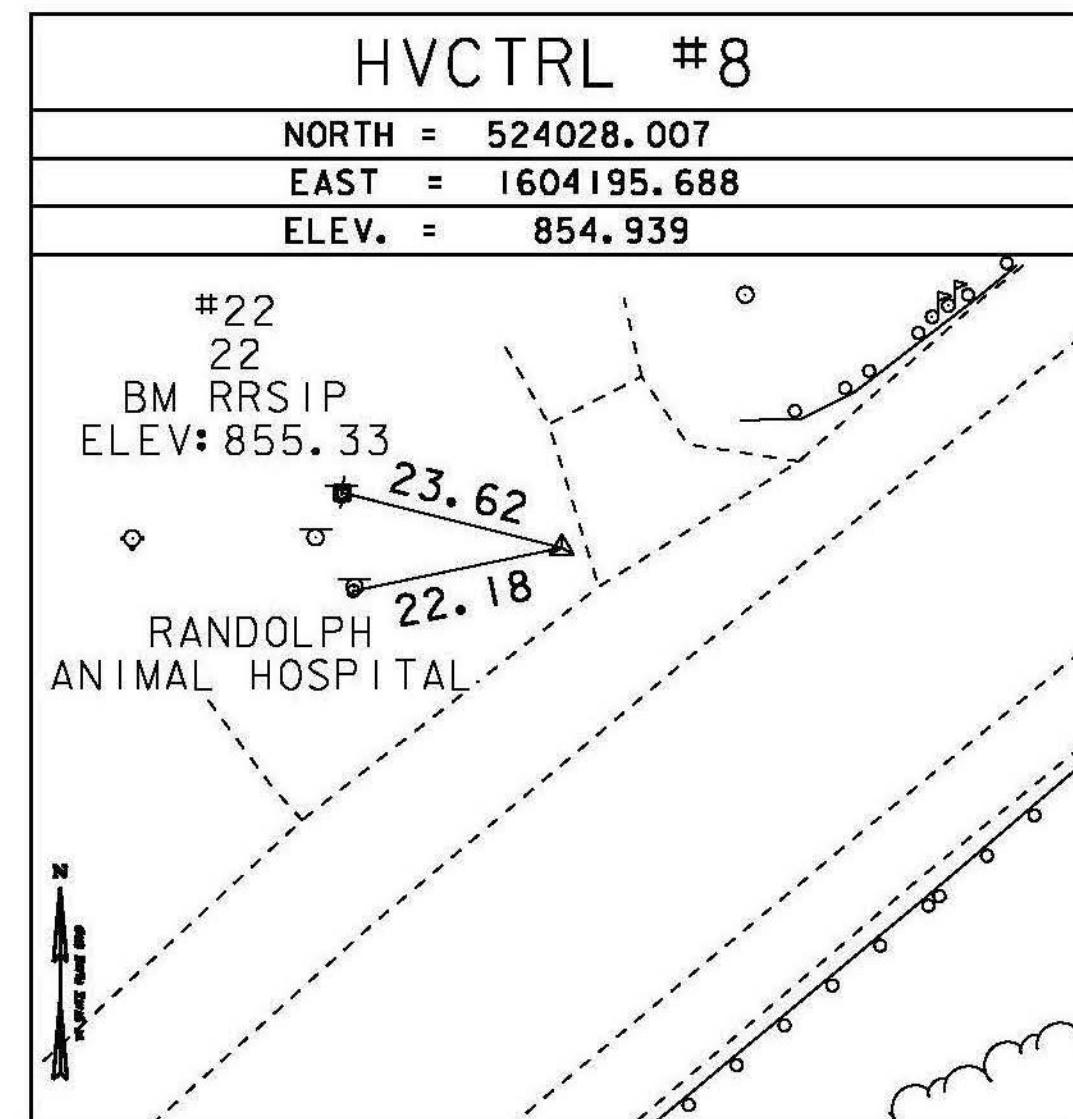
GENERAL LOCATION, RANDOLPH, VT, 2.5 MI (4.0 KM) WEST OF RANDOLPH CENTER, 6.9 MI (11.1 KM) NORTH OF BETHEL. TO REACH FROM THE WEST END OF THE VT. ROUTE 66 BRIDGE OVER 189 GO WEST ALONG VT. ROUTE 66 FOR 1.9 MI (3.1 KM) TO THE MARK ON THE LEFT AT THE NORTH END OF A GOLF COURSE. MARK IS 0.5 MI (0.8 KM) EAST ALONG VT. ROUTE 66 FROM ITS INTERSECTION WITH VT ROUTE 12 IN RANDOLPH. STATION MARK IS SET IN THE TOP OF A 30-CM DIAMETER CONCRETE MONUMENT FLUSH WITH GROUND SURFACE. IT IS 44 FT (13.4 M) SOUTH OF AND ABOUT 3 FT (0.9 M) LOWER THAN THE CENTERLINE OF VT ROUTE 66, 19.5 FT (5.9 M) SOUTHEAST OF POLE NO. 23/137C/45, 132 FT (40.2 M) WEST OF POLE NO. 24/44, 124 FT (37.8 M) SOUTHEAST OF THE SOUTHEAST CORNER OF A 2-STORY WOOD FRAME HOUSE, 6 FT (1.8 M) NORTH OF A FIBERGLASS WITNESS POST IN THE WOOD RAIL GOLF COURSE FENCE

TRAVERSE TIES



* MAIN TRAVERSE COMPLETED 12/29/2011 BY R. GILMAN P.C. & P. WINTERS & C. CYR

ALIGNMENT TIES

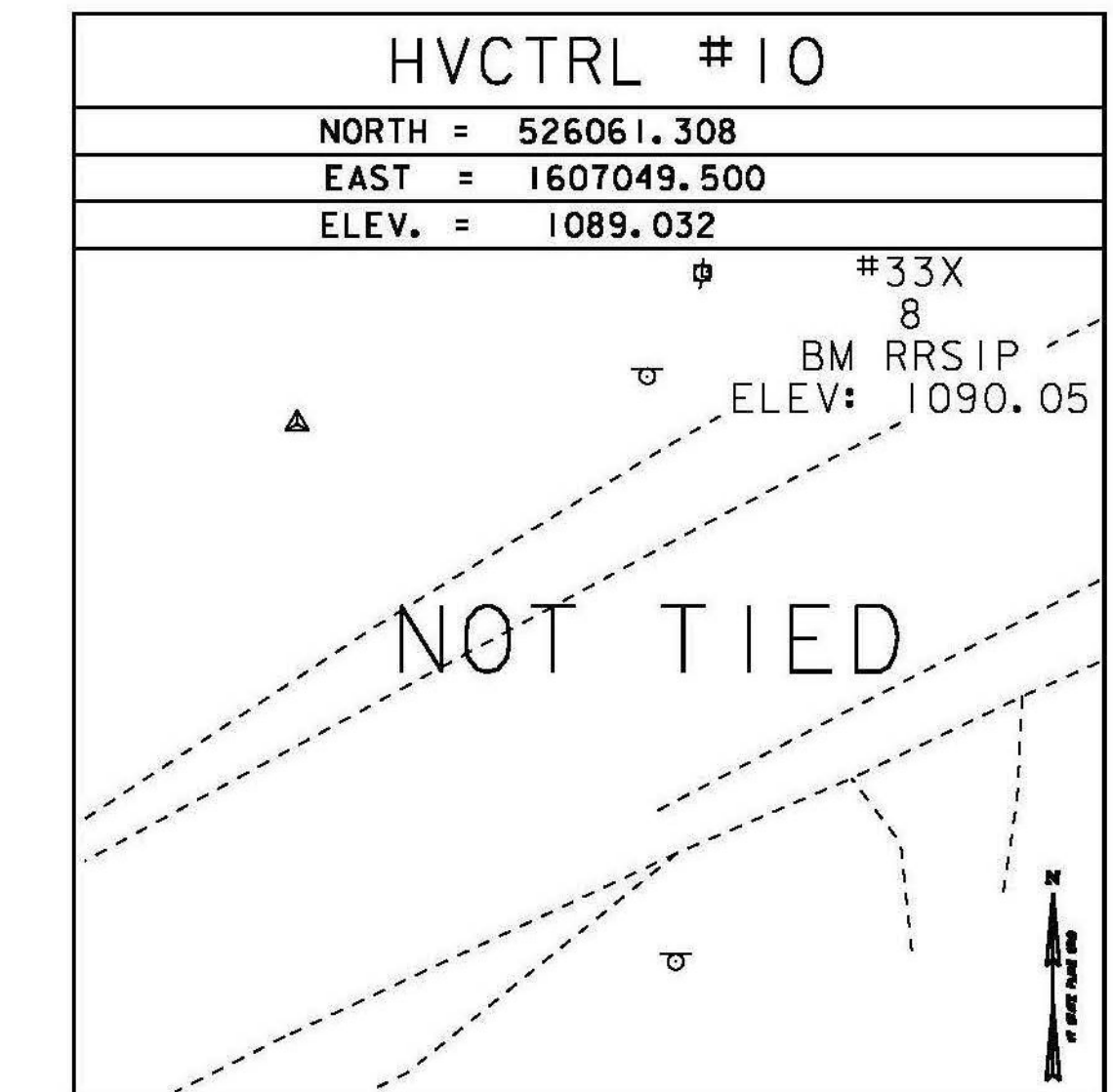


GPS CONTROL POINTS

HVCTRL #9

0909 22 02
NORTH = 525101.841
EAST = 1605591.724
ELEV. = 924.526

GENERAL LOCATION, RANDOLPH, 2 MI (3.2 KM) WEST OF RANDOLPH CENTER, 7 MI (11.3 KM) NORTH OF BETHEL. TO REACH FROM THE WEST END OF THE VT ROUTE 66 BRIDGE OVER 189 GO WEST ALONG VT ROUTE 66 FOR 1.1 MI (1.8 KM) TO A MOBILE HOME ON THE LEFT AND THE MARK ON THE RIGHT. IT IS 1.3 MI (2.1 KM) EAST ALONG VT ROUTE 66 FROM ITS INTERSECTION WITH VT ROUTE 12 IN RANDOLPH. STATION MARK IS SET IN THE TOP OF A 4 FT (1.2 M) X 2 FT (0.6 M) ROCK OUTCROP. IT IS 39.5 FT (12.0 M) NORTH OF AND ABOUT 1 FT (0.3 M) LOWER THAN THE CENTERLINE OF VT ROUTE 66, 219 FT (66.8 M) EAST OF THE CENTERLINE OF HARLOW HILL ROAD, 16.5 FT (5.0 M) NORTH OF THE CENTER



DATUM

VERTICAL	NAVD 88
HORIZONTAL	NAD 83 (07)
ADJUSTMENT	COMPASS

NOT TO SCALE

PROJECT NAME:	RANDOLPH	PLOT DATE:	6/5/2014
PROJECT NUMBER:	STP 2932(I)	DRAWN BY:	R. BULLOCK
FILE NAME:	survey\10c270+1.dgn	DESIGNED BY:	VAOT
PROJECT LEADER:	M. FOWLER	CHECKED BY:	VAOT
TIE SHEET 1		SHEET 4	OF 276