

TEMPORARY 4 INCH WHITE LINE, PAINT
 DURABLE 4 INCH WHITE LINE (OPTION ITEM)
 1+50 TO 7+50 SOLID LT & RT

TEMPORARY 4 INCH YELLOW LINE, PAINT
 1+50 TO 7+50 SOLID LT & RT

DURABLE 4 INCH YELLOW LINE (OPTION ITEM)
 1+50 TO 2+00 SOLID LT & RT

DURABLE 4 INCH YELLOW LINE, EPOXY PAINT OR
 DURABLE 4 INCH YELLOW LINE, POLYUREA (OPTION ITEM)
 2+00 TO 7+50 SOLID LT & RT

TEMPORARY RAILROAD CROSSING SYMBOL, PAINT
 DURABLE RAILROAD CROSSING SYMBOL (OPTION ITEM)
 4+70 RT

TEMPORARY LETTER OR SYMBOL, PAINT
 DURABLE LETTER OR SYMBOL (OPTION ITEM)
 5+91 LT "AHEAD"
 6+31 LT "STOP"

STEEL BEAM GUARDRAIL, GALVANIZED
 2+67.5 TO 3+05 RT

REMOVE AND RESET GUARDRAIL
 1+50 TO 2+67.5 RT

ANCHOR FOR STEEL BEAM RAIL
 1 (SEE STANDARD G-1d)

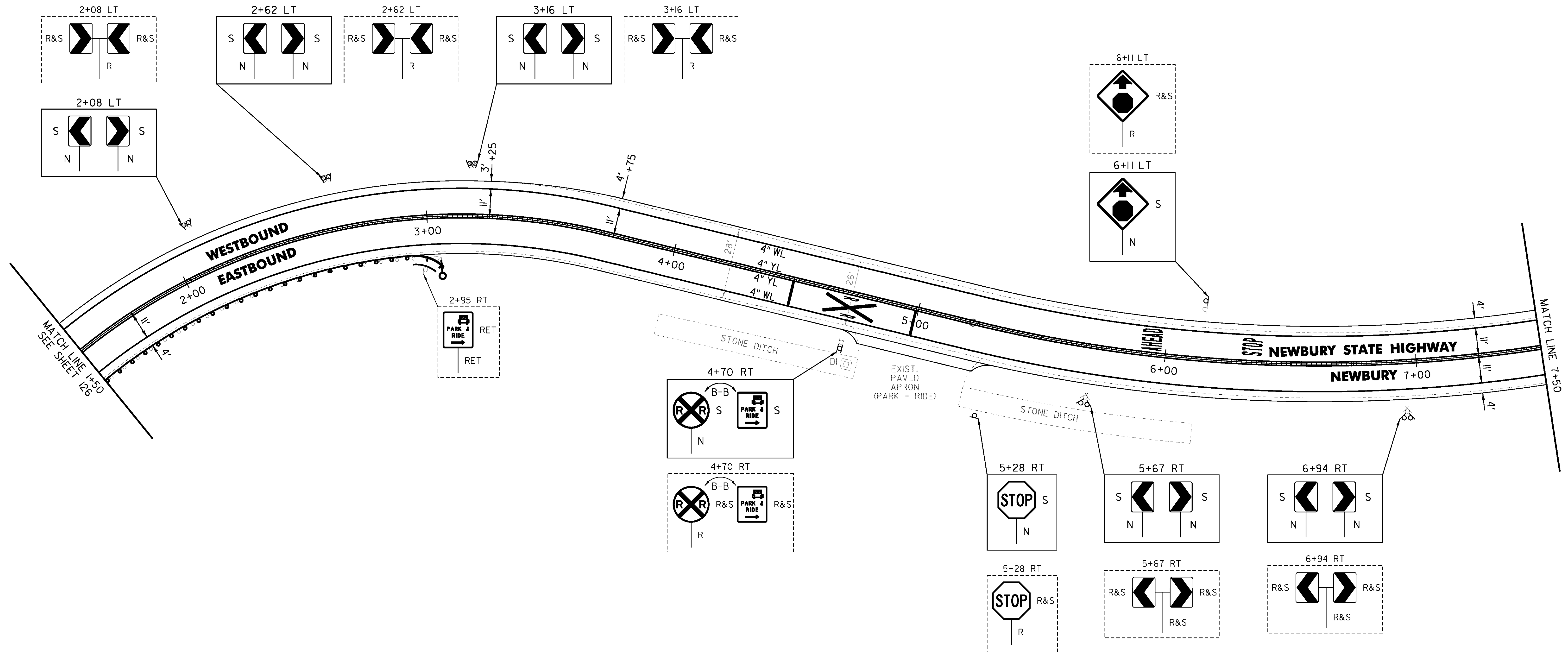
REMOVAL AND DISPOSAL OF GUARDRAIL
 2+67.5 TO 3+05 RT

DELINEATOR WITH STEEL POST
 3+05 RT

MILLED RUMBLE STRIPS
 2+00 TO 7+50 CL

REMOVING SIGNS
 AS SHOWN - 14

ERECTING SALVAGED SIGNS
 AS SHOWN - 14



NOT TO SCALE

PROJECT NAME: BRADFORD-RYEGATE	PLOT DATE: 2/4/2016
PROJECT NUMBER: STP 2929(I)	DRAWN BY: W. GORDON
FILE NAME: z10c264bdr.dgn	CHECKED BY: P. SHEDD
PROJECT LEADER: P. SHEDD	SHEET 196 OF 239
DESIGNED BY: N. LEMAY	
NEWBURY STATE HIGHWAY PLAN SHEET I	