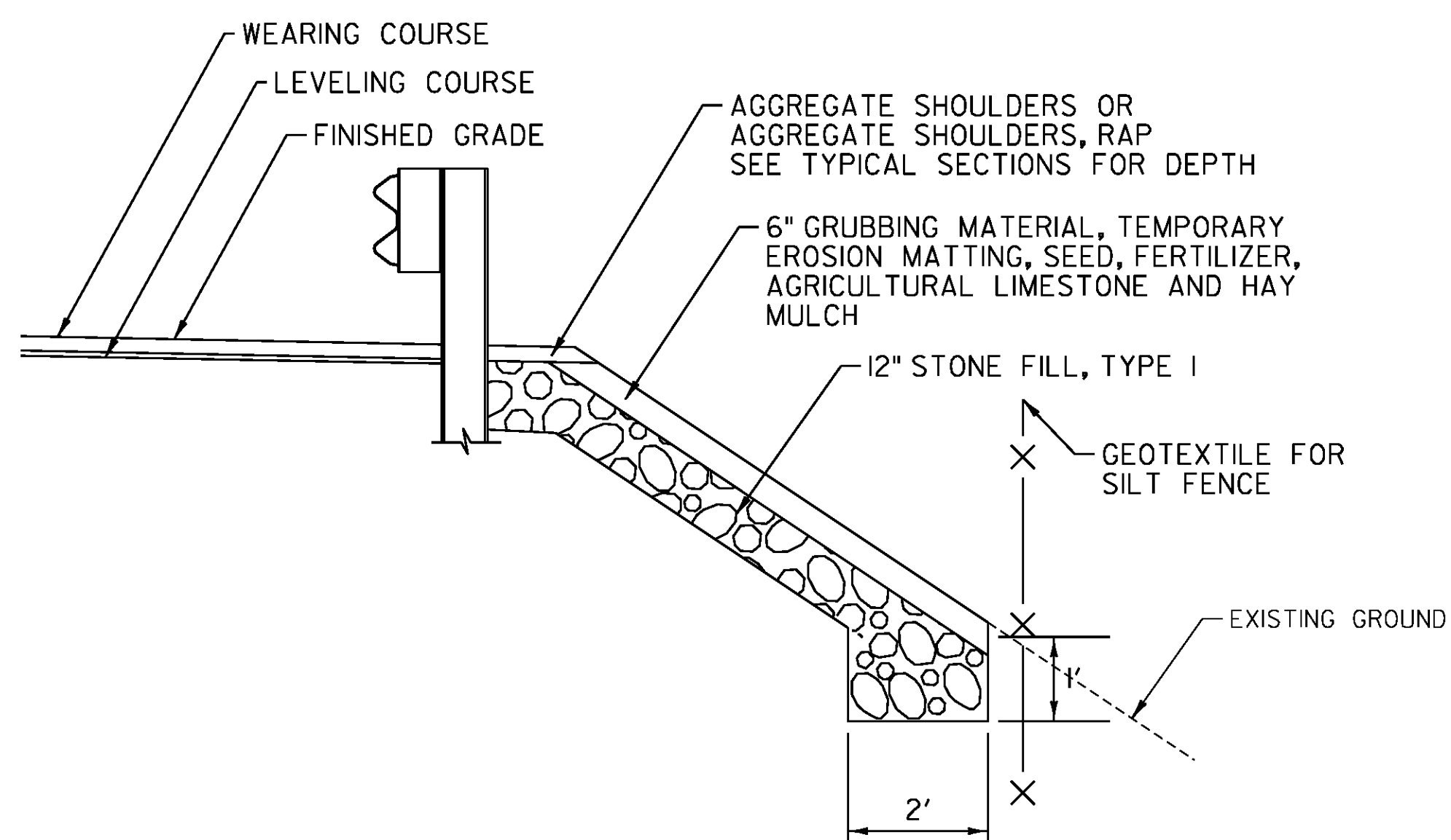


CURB DETAIL

BRADFORD US 5 - 135+74 TO 135+94 RT

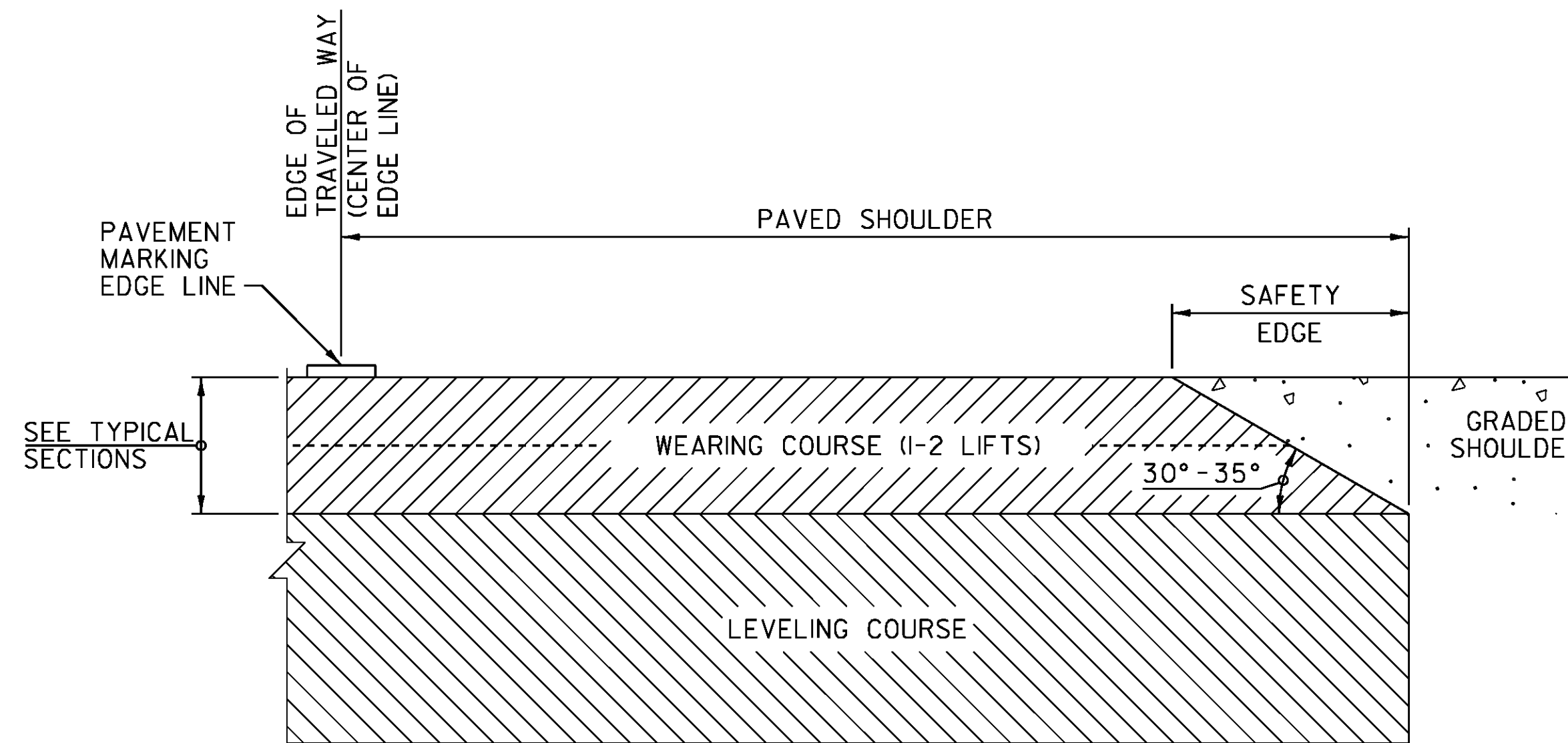


FILL SLOPE WITH STONE FILL DETAIL

FILL SLOPE WITH STONE FILL NOTES

1. STONE FILL TO BE PLACED ON SLOPES STEEPER THAN 1:1.5
2. ANY EXCAVATION REQUIRED TO INSTALL STONE FILL SHALL BE PAID FOR UNDER ITEM 608.25 ALL PURPOSE EXCAVATOR RENTAL, TYPE I.

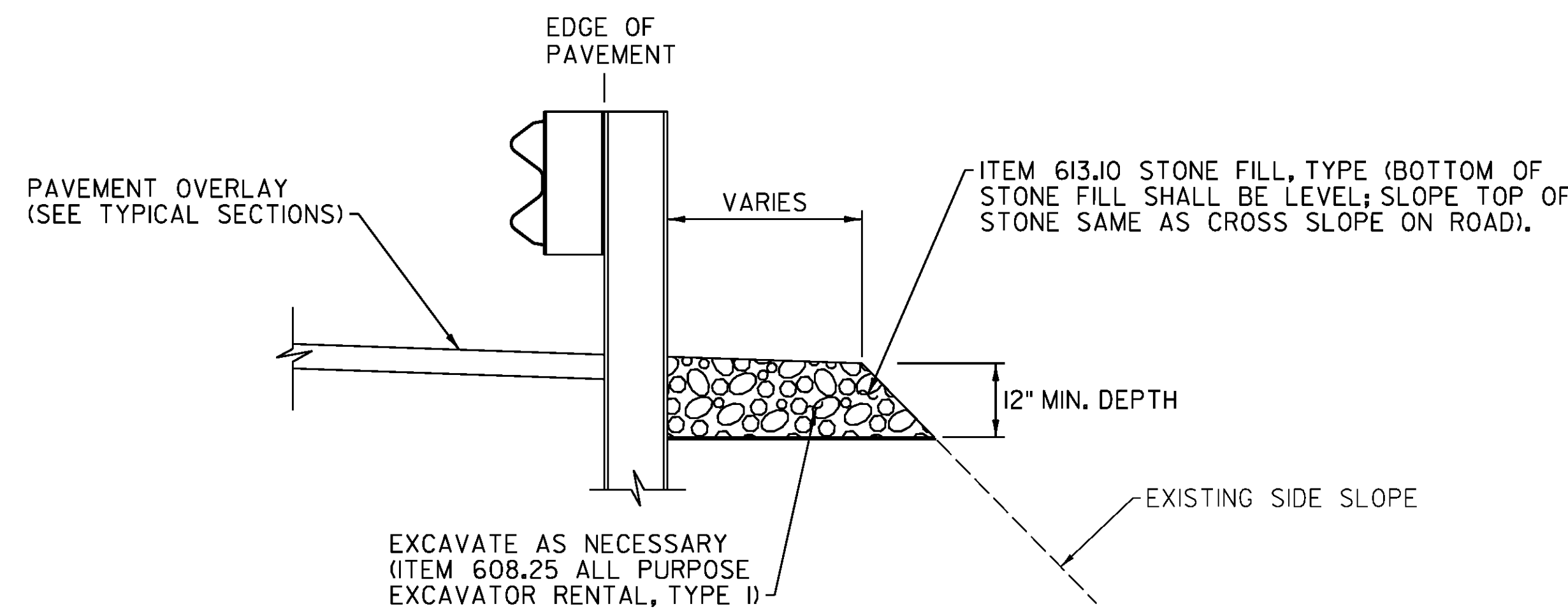
BRADFORD US ROUTE 5 - 294+00 TO 294+30 LT (10.5 FEET WIDE)
 NEWBURY US ROUTE 5 - N 34+95 TO N 35+75 RT (5 FEET WIDE)
 N 116+20 TO N 121+45 RT (10.75 FEET WIDE)
 N 323+20 TO N 323+90 RT (9.75 FEET WIDE)
 RYEGATE US ROUTE 5 - R 5+40 TO R 5+60 LT (4 FEET WIDE)



SAFETY EDGE DETAIL

SAFETY EDGE NOTES

1. LEVELING COURSE MAY INCLUDE THE "SAFETY EDGE" AT THE CONTRACTOR'S CHOICE.
2. THE EDGE OF PAVEMENT SHALL BE FORMED IN SUCH A WAY THAT THE BITUMINOUS CONCRETE PAVEMENT IS EXTRUDED OR COMPRESSED TO FORM THE 30 TO 35 DEGREE ANGLE. DEVICES THAT SIMPLY STRIKE-OFF THE MIX WITHOUT PROVIDING ANY COMPACTIVE EFFORT WILL NOT BE ALLOWED.
3. THE PAVED SHOULDER EXTENDS FROM THE EDGE OF TRAVELED WAY TO THE EDGE OF THE WEARING COURSE, INCLUDES THE "SAFETY EDGE".



SHOULDER STABILIZATION DETAIL

BRADFORD US ROUTE 5 - 103+43 TO 104+43 LT (4 FEET WIDE)
 NEWBURY US ROUTE 5 - N 156+30 TO N 156+80 RT (3 FEET WIDE)
 N 220+00 TO N 221+50 LT (3 FEET WIDE)
 RYEGATE US ROUTE 5 - R 5+31 TO R 5+56 RT (3 FEET WIDE)

PROJECT NAME: BRADFORD-RYEGATE

PROJECT NUMBER: STP 2929(I)

FILE NAME: z10c264frm.dgn
 PROJECT LEADER: P. SHEDD
 DESIGNED BY: N. LEMAY
 DETAIL SHEET 2

PLOT DATE: 2/4/2016
 DRAWN BY: W. GORDON
 CHECKED BY: P. SHEDD
 SHEET 31 OF 239

NOT TO SCALE